

Converting Colors

YUV(149.6100, -11.6397,
46.8230)

Have a look what the booklet for
YUV(149.6100, -11.6397, 46.8230)
contains.

YUV(149.6100, -11.6397, 46.8230)	3
<i>Conversions</i>	4
<i>Details</i>	6
<i>Harmonies</i>	12
<i>Previews</i>	24
<i>Color Blindness Simulation</i>	28
<i>CSS Examples</i>	31

Color

**YUV(149.6100, -11.6397,
46.8230)**

Conversions

Conversions Part 1

Format	Color
Hex	CB7F7E
RGB	203, 127, 126
RGB Percent	80%, 50%, 49%
CMY	0.2039, 0.5020, 0.5059
CMYK	0.00, 0.37, 0.38, 0.20
HSL	1°, 43%, 65%
HSV	1°, 38%, 80%
XYZ	35.9839, 29.3816, 23.5133
YIQ	149.6100, 45.6170, 15.8010

Conversions

Conversions Part 2

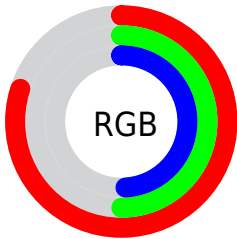
Format	Color
R_{YB}	203, 127, 126
Decimal	13336446
CIE _{Lab}	61.12, 29.31, 12.97
CIE _{LCh}	61, 32.050, 23.870
Yxy	29.3816, 0.4049, 0.3306
Android (android.graphics.Color)	4291526526 (0xFFCB7F7E)
YUV	149.6100, -11.6397, 46.8230
Hunter-Lab	54.2048, 23.6388, 12.2242

Details

The YUV color **149.6100, -11.6397, 46.8230** is a dark color, and the websafe version is hex **CC9999**. A complement of this color would be **179.3900, 11.6397, -46.8230**, and the grayscale version is **150.0000, 0.0000, 0.0000**.

A 20% lighter version of the original color is **202.8980, -11.7817, 45.6935**, and **97.6310, -10.1711, 42.4196** is the 20% darker color. If you saturate the color by 10%, you get **135.5900, -14.5879, 59.1186**, and if you desaturate by 10%, it is **163.6300, -8.6916, 34.5275**.

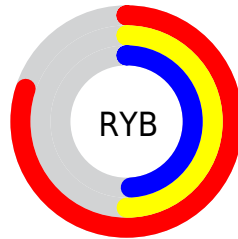
Distribution



Red (80%)

Green (50%)

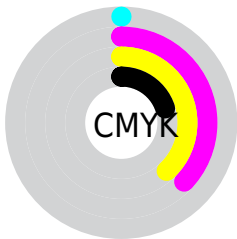
Blue (49%)



Red (80%)

Yellow (50%)

Blue (49%)

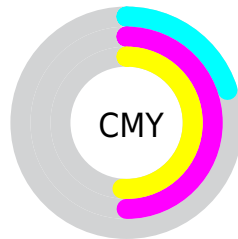


Cyan (0%)

Magenta (37%)

Yellow (38%)

Black (20%)



Cyan (20%)

Magenta (50%)

Yellow (51%)

Brightness & Saturation Gradients

These gradients show how the YUV color 149.6100, -11.6397, 46.8230 changes by changing the brightness by 10 percent. The first figure shows a shift by +10% for each color and the second figure -10%.

Similar to the brightness gradients but the following saturation gradients show a change of the YUV color 149.6100, -11.6397, 46.8230 by changing the saturation by 10% instead.

■ 149.6100,
-11.6397, 46.8230

■ 149.6100,
-11.6397, 46.8230

■ 255.0000, 0.0000,
0.0000

■ 122.8270,
-10.7607, 44.8787

■ 202.8980,
-11.7817, 45.6935

■ 97.6310, -10.1711,
42.4196

■ 221.8250, -7.8017,
29.0945

■ 72.8480, -9.2921,
40.4753

■ 242.0400, -3.9637,
11.3659

■ 48.2930, -7.5394,
38.3310

■ 23.3360, -6.0816,
37.4163

■ 13.2700, -6.0491,
26.9502

■ 0.0000, 0.0000,

0.0000

■ 149.6100,
-11.6397, 46.8230

■ 149.6100,
-11.6397, 46.8230

■ 135.5900,
-14.5879, 59.1186

■ 163.6300, -8.6916,
34.5275

■ 121.4560,
-17.9728, 71.5141

■ 177.7640, -5.3067,
22.1320

■ 107.4360,
-20.9209, 83.8096

■ 191.7840, -2.3585,
9.8364

■ 93.4160, -23.8691,
96.1052

■ 205.8040, 0.5896,
-2.4591

■ 79.3960, -26.8172,
108.4007

■ 219.9380, 3.9746,
-14.8546

■ 65.2620, -30.2022,
120.7962

■ 233.9580, 6.9227,
-27.1502

■ 62.4580, -30.7918,
123.2553

■ 239.4520, 7.6652,
-31.9684

Harmonies

Analogous

The Analogous color harmony consists of three colors that are next to each other on the color wheel.



150.8340, 2.0538, 41.3646



149.6100, -11.6397, 46.8230



148.1070, -22.2378, 39.3712

Triad

The Triadic color harmony groups three colors that are evenly spaced from another and form a triangle on the color wheel.



149.6100, -11.6397, 46.8230



139.1050, -12.8698, -25.5251



141.6680, 30.2367, -38.2968

Complementary

The Complementary color scheme is a pair of colors which are on the opposite of each other on the color wheel.



149.6100, -11.6397, 46.8230



179.3900, 11.6397, -46.8230

Split Complementary

Split-complementary colors differ from the complementary color scheme. The scheme consists of three colors, the original color and two neighbors of the complement color.



131.0680, 30.0395, -68.4656



149.6100, -11.6397, 46.8230



133.4790, 3.2149, -51.2861

Square

The Square scheme is like the rectangle color scheme, but the four colors are evenly spaced on the color wheel.



149.6100, -11.6397, 46.8230



143.3980, -23.8602, -0.3490



126.9180, 20.7464, -74.4731



148.7970, 24.7501, -5.0840

Rectangle

The Rectangle color scheme consists of four colors that form a rectangle on the color wheel.



149.6100, -11.6397, 46.8230



146.6020, -26.4258, 29.2900



126.9180, 20.7464, -74.4731



138.4170, 30.8534, -49.4777

Sweetspot

The Sweet Spot groups the original color and five complimentary colors.



149.6100, -11.6397, 46.8230



235.3720, -4.1274, 17.2138



157.8010, 22.2831, 39.6395



116.0830, -2.5059, 10.4512



0.0000, 0.0000, 0.0000



128.0000, 0.0000, 0.0000

Same Dimension

The Same Dimension uses a secret algorithm to generate beautiful new colors.



149.6100, -11.6397, 46.8230



173.5700, -17.5360, 71.4141



171.9160, -22.6366, 27.2607



94.9900, -1.4741, 6.1478



50.8080, -25.0483, 101.0234



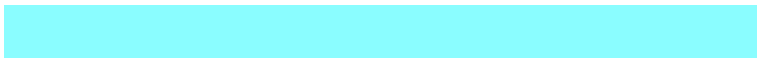
11.3620, -5.6015, 23.3615

Inverse Universe

The Inverse Universe completely reimagines the original color for something new.



179.3900, 11.6397, -46.8230



218.8430, 17.8254, -70.8993



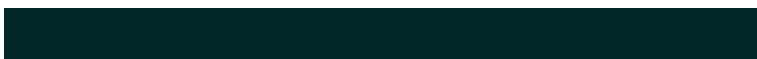
157.6710, 22.3472, -27.7755



99.0100, 1.4741, -6.1478



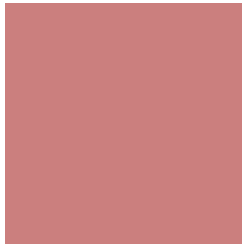
115.1920, 25.0483, -101.0234



26.6380, 5.6015, -23.3615

Previews

White Background



This preview shows how the YUV color 149.6100, -11.6397, 46.8230 looks on a white background.

Color Contrast Check

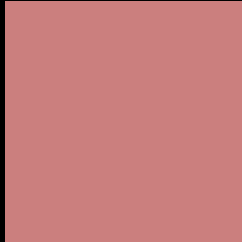
Large Text (above 18pt) WCAG AA ✓ Pass

Any Text WCAG AA × Fail

Large Text (above 18pt) WCAG AAA × Fail

Any Text WCAG AAA × Fail

Black Background



This preview shows how the YUV color 149.6100, -11.6397, 46.8230 looks on a black background.

Color Contrast Check

Large Text (above 18pt) WCAG AA ✓ Pass

Any Text WCAG AA ✓ Pass

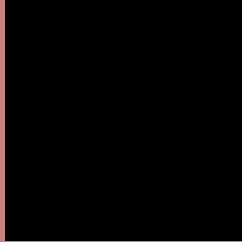
Large Text (above 18pt) WCAG AAA ✓ Pass

Any Text WCAG AAA × Fail

If you want to check with other color combinations, try the [Color Contrast Checker](#).

YUV 149.6100, -11.6397, 46.8230

Background



This preview shows how black text looks on a background with the YUV color 149.6100, -11.6397, 46.8230.



This preview shows how white text looks on a background with the YUV color 149.6100, -11.6397,

Color Blindness Simulation

Color vision deficiency is a very complex topic, and I could not describe the different causes any better than Wikipedia does, so if you want to learn more, you should check out their [article about color blindness](#).

Dichromacy



Original Color

149.6100, -11.6397, 46.8230

Protanopia

147.5400, -5.6892, 4.7884

Deuteranopia

148.5050, -12.5740, 19.7281



Tritanopia

150.3480, -7.5666, 47.0528

Trichromacy



Original Color

149.6100, -11.6397, 46.8230

Protanomaly

148.3570, -8.0640, 19.8579

Deuteranomaly

149.2720, -12.4591, 29.5795

Tritanomaly

150.0060, -8.8770, 47.3527

Monochromacy



Original Color

149.6100, -11.6397, 46.8230

Achromatopsia

150.0000, 0.0000, 0.0000

Achromatomaly

149.9590, -4.4168, 16.6990

CSS Examples

Text

The CSS property to change the color of the text to YUV 149.6100, -11.6397, 46.8230 is called "color". The color property can be set on classes, ids or directly on the HTML element.

This example shows how text in the color `rgb(203, 127, 126)` looks like.

```
.text, #text, p{  
    color:rgb(203, 127, 126)  
}
```

If you want to add a text shadow in that color use the text-shadow property, you can generate a text shadow directly with our [CSS Text Shadow Generator](#).

Here you see how black text with a 4 pixel rgb(203, 127, 126) colored shadow looks like.

```
.shadow{ text-shadow: 4px 4px 2px rgb(203, 127, 126) }
```

Border

The CSS property to change the border of an element to YUV 149.6100, -11.6397, 46.8230 is called "border".

The border property can be set on classes, ids or directly on the HTML element.

This example shows the color as border, it can be applied via the CSS property "border" or "border-color".

```
.border, #border, table{ border:4px solid rgb(203, 127, 126) }
```


If only the border color should be changed use the property `border-color`.

```
.border{ border-color:rgb(203, 127, 126) }
```

If you want to add a box shadow in that color use:

Here you see how a box with a 4 pixel `rgb(203, 127, 126)` colored shadow looks like.

```
.boxshadow{ -moz-box-shadow:4px 4px 4px  
4px rgb(203, 127, 126); -webkit-box-  
shadow:4px 4px 4px 4px rgb(203, 127, 126);  
box-shadow:4px 4px 4px 4px rgb(203, 127,  
126) }
```

Background

The CSS property to change the background color of an element to YUV 149.6100, -11.6397, 46.8230 is called "background". The background property can be set on classes, ids or directly on the HTML element.

```
.background, #background, body{  
background: rgb(203, 127, 126) }
```

If only the background color should be changed can be used:

```
.background{ background-color: rgb(203,  
127, 126) }
```

This example shows the color as background, it is applied via the CSS property "background".

To optimize and compress your CSS code, you can use our [online CSS compressor and optimizer](#) based on csstidy. If you want to create a linear or radial gradient as background or border, check our [CSS Gradient Generator](#).

Hey! You found this booklet interesting? Support Converting Colors with the new Membership Option!

The pro membership hides all ads, plus gives you double the colors in the color bucket, and more awesome pro features!

[Learn more, Memberships starting at \\$2.50/m!](#)

**Follow me
on Twitter!**

@ConvertingColor