

Converting Colors

YUV(149.6130, -6.2182,
34.5424)

Have a look what the booklet for
YUV(149.6130, -6.2182, 34.5424)
contains.

YUV(149.6130, -6.2182, 34.5424)	3
<i>Conversions</i>	4
<i>Details</i>	6
<i>Harmonies</i>	12
<i>Previews</i>	24
<i>Color Blindness Simulation</i>	28
<i>CSS Examples</i>	31

Color

**YUV(149.6130, -6.2182,
34.5424)**

Conversions

Conversions Part 1

Format	Color
Hex	BD8489
RGB	189, 132, 137
RGB Percent	74%, 52%, 54%
CMY	0.2588, 0.4824, 0.4627
CMYK	0.00, 0.30, 0.28, 0.26
HSL	355°, 30%, 63%
HSV	355°, 30%, 74%
XYZ	33.7529, 29.1275, 27.5101
YIQ	149.6130, 32.3670, 13.6390

Conversions

Conversions Part 2

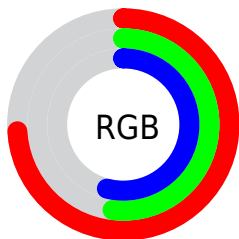
Format	Color
R _Y B	189, 132, 137
Decimal	12420233
CIE Lab	60.89, 22.63, 6.14
CIE LCh	61, 23.452, 15.175
Yxy	29.1275, 0.3734, 0.3222
Android (android.graphics.Color)	4290610313 (0xFFBD8489)
YUV	149.6130, -6.2182, 34.5424
Hunter-Lab	53.9699, 17.1870, 7.5570

Details

The YUV color $149.6130, -6.2182, 34.5424$ is a light color, and the websafe version is hex $CC9999$. A complement of this color would be $171.3870, 6.2182, -34.5424$, and the grayscale version is $150.0000, 0.0000, 0.0000$.

A 20% lighter version of the original color is $203.8090, -6.8078, 37.0015$, and $98.1180, -5.4812, 31.4685$ is the 20% darker color. If you saturate the color by 10%, you get $136.5220, -8.1453, 46.0232$, and if you desaturate by 10%, it is $162.7040, -4.2911, 23.0616$.

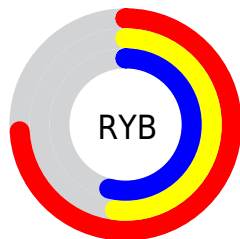
Distribution



Red (74%)

Green (52%)

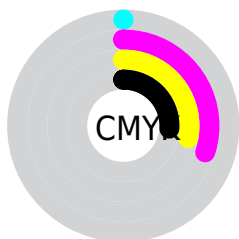
Blue (54%)



Red (74%)

Yellow (52%)

Blue (54%)

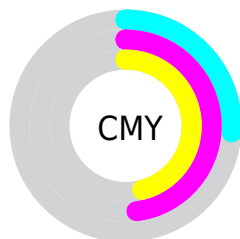


Cyan (0%)

Magenta (30%)

Yellow (28%)

Black (26%)



Cyan (26%)


Magenta (48%)


Yellow (46%)

Brightness & Saturation Gradients


These gradients show how the YUV color 149.6130, -6.2182, 34.5424 changes by changing the brightness by 10 percent. The first figure shows a shift by +10% for each color and the second figure -10%.


Similar to the brightness gradients but the following saturation gradients show a change of the YUV color 149.6130, -6.2182, 34.5424 by changing the saturation by 10% instead.


 149.6130, -6.2182,
34.5424


 149.6130, -6.2182,
34.5424


255.0000, 0.0000,
0.0000

 123.1290, -5.4866,
33.2129


 203.8090, -6.8078,
37.0015


 98.1180, -5.4812,
31.4685


 226.1280, -4.0071,
25.3207

 73.6340, -4.7496,
30.1390

 246.4570, 0.2677,
7.4922

 50.4380, -4.1599,
27.6799

 27.4810, -2.7021,
26.7652

 11.4760, -5.1647,
23.2615

 0.0000, 0.0000,

0.0000

■ 149.6130, -6.2182,
34.5424

■ 149.6130, -6.2182,
34.5424

■ 136.5220, -8.1453,
46.0232

■ 162.7040, -4.2911,
23.0616

■ 123.4310,
-10.0725, 57.5040

■ 175.7950, -2.3639,
11.5808

■ 110.2260,
-12.4364, 69.0848

■ 189.0000, 0.0000,
0.0000

■ 97.1350, -14.3636,
80.5656

■ 202.0910, 1.9271,
-11.4808

■ 84.6310, -16.5801,
91.5316

■ 215.1820, 3.8543,
-22.9616

■ 71.5400, -18.5072,
103.0124

■ 227.6860, 6.0708,
-33.9276

■ 58.4490, -20.4344,
114.4932

■ 235.2660, 9.7289,
-40.5753

Harmonies

Analogous

The Analogous color harmony consists of three colors that are next to each other on the color wheel.



150.5010, 3.6970, 27.6246



149.6130, -6.2182, 34.5424



148.5990, -15.0853, 31.9237

Triad

The Triadic color harmony groups three colors that are evenly spaced from another and form a triangle on the color wheel.



149.6130, -6.2182, 34.5424



142.0080, -12.3289, -12.2850



142.4210, 21.4844, -31.0642

Complementary

The Complementary color scheme is a pair of colors which are on the opposite of each other on the color wheel.



149.6130, -6.2182, 34.5424



171.3870, 6.2182, -34.5424

Split Complementary

Split-complementary colors differ from the complementary color scheme. The scheme consists of three colors, the original color and two neighbors of the complement color.



138.2360, 18.6177, -44.9340



149.6130, -6.2182, 34.5424



139.6450, -1.7970, -30.3837

Square

The Square scheme is like the rectangle color scheme, but the four colors are evenly spaced on the color wheel.



149.6130, -6.2182, 34.5424



144.8100, -18.6403, 5.4286



137.5430, 9.5923, -43.4492



147.0970, 19.6722, -9.7321

Rectangle

The Rectangle color scheme consists of four colors that form a rectangle on the color wheel.



149.6130, -6.2182, 34.5424



147.6430, -18.5580, 25.7461



137.5430, 9.5923, -43.4492



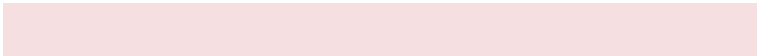
140.9750, 21.2113, -36.8121

Sweetspot

The Sweet Spot groups the original color and five complimentary colors.



149.6130, -6.2182, 34.5424



229.8060, -2.3694, 13.3251



153.7470, 17.3797, 25.6549



113.0010, -1.4795, 7.8921



250.0000, 0.0000, 0.0000



122.0000, 0.0000, 0.0000

Same Dimension

The Same Dimension uses a secret algorithm to generate beautiful new colors.



149.6130, -6.2182, 34.5424



184.1100, -9.9142, 53.4005



162.5440, -15.0582, 23.2019



87.8050, -0.8899, 5.4330



48.8380, -17.1751, 95.7351



9.6110, -3.2592, 18.7582

Inverse Universe

The Inverse Universe completely reimagines the original color for something new.



149.6130, -6.2182, 34.5424



184.1100, -9.9142, 53.4005



158.4560, 15.0582, -23.2019



87.8050, -0.8899, 5.4330



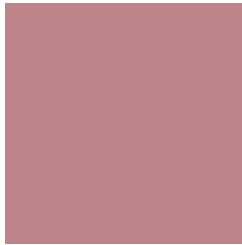
48.8380, -17.1751, 95.7351



9.6110, -3.2592, 18.7582

Previews

White Background



This preview shows how the YUV color 149.6130, -6.2182, 34.5424 looks on a white background.

Color Contrast Check

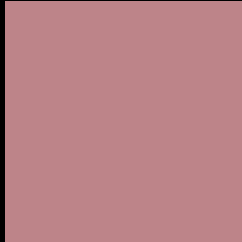
Large Text (above 18pt) WCAG AA ✓ Pass

Any Text WCAG AA × Fail

Large Text (above 18pt) WCAG AAA × Fail

Any Text WCAG AAA × Fail

Black Background



This preview shows how the YUV color 149.6130, -6.2182, 34.5424 looks on a black background.

Color Contrast Check

Large Text (above 18pt) WCAG AA ✓ Pass

Any Text WCAG AA ✓ Pass

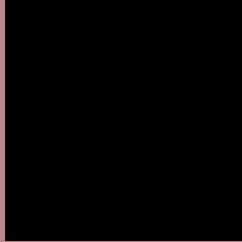
Large Text (above 18pt) WCAG AAA ✓ Pass

Any Text WCAG AAA × Fail

If you want to check with other color combinations, try the [Color Contrast Checker](#).

YUV 149.6130, -6.2182, 34.5424

Background



This preview shows how black text looks on a background with the YUV color 149.6130, -6.2182, 34.5424.



This preview shows how white text looks on a background with the YUV color 149.6130, -6.2182,

34.5424.

Color Blindness Simulation

Color vision deficiency is a very complex topic, and I could not describe the different causes any better than Wikipedia does, so if you want to learn more, you should check out their [article about color blindness](#).

Dichromacy



Original Color

149.6130, -6.2182, 34.5424

Protanopia

147.6690, -1.3158, 2.0443

Deuteranopia

148.3780, -6.5954, 15.4545



Tritanopia

149.4820, -4.1816, 34.6573

Trichromacy



Original Color

149.6130, -6.2182, 34.5424

Protanomaly

148.5780, -3.2430, 13.5251

Deuteranomaly

148.5360, -6.1802, 22.3319

Tritanomaly

149.3680, -4.6184, 34.7573

Monochromacy



Original Color

149.6130, -6.2182, 34.5424

Achromatopsia

150.0000, 0.0000, 0.0000

Achromatomaly

149.5070, -2.2220, 12.7104

CSS Examples

Text

The CSS property to change the color of the text to YUV 149.6130, -6.2182, 34.5424 is called "color". The color property can be set on classes, ids or directly on the HTML element.

This example shows how text in the color `rgb(189, 132, 137)` looks like.

```
.text, #text, p{  
    color:rgb(189, 132, 137)  
}
```

If you want to add a text shadow in that color use the text-shadow property, you can generate a text shadow directly with our [CSS Text Shadow Generator](#).

Here you see how black text with a 4 pixel rgb(189, 132, 137) colored shadow looks like.

```
.shadow{ text-shadow: 4px 4px 2px rgb(189, 132, 137) }
```

Border

The CSS property to change the border of an element to YUV 149.6130, -6.2182, 34.5424 is called "border". The border property can be set on classes, ids or directly on the HTML element.

This example shows the color as border, it can be applied via the CSS property "border" or "border-color".

```
.border, #border, table{ border:4px solid rgb(189, 132, 137) }
```


If only the border color should be changed use the property `border-color`.

```
.border{ border-color:rgb(189, 132, 137) }
```

If you want to add a box shadow in that color use:

Here you see how a box with a 4 pixel `rgb(189, 132, 137)` colored shadow looks like.

```
.boxshadow{ -moz-box-shadow:4px 4px 4px  
4px rgb(189, 132, 137); -webkit-box-  
shadow:4px 4px 4px 4px rgb(189, 132, 137);  
box-shadow:4px 4px 4px 4px rgb(189, 132,  
137) }
```

Background

The CSS property to change the background color of an element to YUV 149.6130, -6.2182, 34.5424 is called "background". The background property can be set on classes, ids or directly on the HTML element.

```
.background, #background, body{  
background: rgb(189, 132, 137) }
```

If only the background color should be changed can be used:

```
.background{ background-color: rgb(189,  
132, 137) }
```

This example shows the color as background, it is applied via the CSS property "background".

To optimize and compress your CSS code, you can use our [online CSS compressor and optimizer](#) based on csstidy. If you want to create a linear or radial gradient as background or border, check our [CSS Gradient Generator](#).

Hey! You found this booklet interesting? Support Converting Colors with the new Membership Option!

The pro membership hides all ads, plus gives you double the colors in the color bucket, and more awesome pro features!

[Learn more, Memberships starting at \\$2.50/m!](#)

**Follow me
on Twitter!**

@ConvertingColor