

# Converting Colors

YUV(149.6600, -21.0314,  
25.7312)

Have a look what the booklet for  
YUV(149.6600, -21.0314, 25.7312)  
contains.

<b>YUV(149.6600, -21.0314, 25.7312)</b> .....	3
<b><i>Conversions</i></b> .....	4
<b><i>Details</i></b> .....	6
<b><i>Harmonies</i></b> .....	12
<b><i>Previews</i></b> .....	24
<b><i>Color Blindness Simulation</i></b> .....	28
<b><i>CSS Examples</i></b> .....	31

# Color

**YUV(149.6600, -21.0314,  
25.7312)**

# Conversions

## Conversions Part 1

Format	Color
Hex	B38F6B
RGB	179, 143, 107
RGB Percent	70%, 56%, 42%
CMY	0.2980, 0.4392, 0.5804
CMYK	0.00, 0.20, 0.40, 0.30
HSL	30°, 32%, 56%
HSV	30°, 40%, 70%
XYZ	31.0667, 30.2902, 18.1191
YIQ	149.6600, 33.0120, -3.5640

# Conversions

## Conversions Part 2

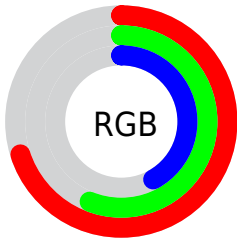
<b>Format</b>	<b>Color</b>
<b>RYB</b>	179, 179, 107
Decimal	11767659
CIELab	61.90, 8.63, 24.31
CIElCh	62, 25.795, 70.458
Yxy	30.2902, 0.3909, 0.3811
Android (android.graphics.Color)	4289957739 (0xFFB38F6B)
YUV	149.6600, -21.0314, 25.7312
Hunter-Lab	55.0365, 4.4448, 19.0061

# Details

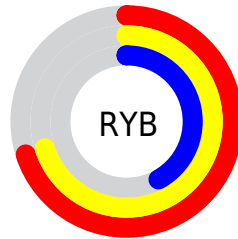
The YUV color **149.6600, -21.0314, 25.7312** is a dark color, and the websafe version is hex **CC9966**. A complement of this color would be **136.3400, 21.0314, -25.7312**, and the grayscale version is **150.0000, 0.0000, 0.0000**.

A 20% lighter version of the original color is **204.3290, -22.3472, 27.7755**, and **98.6920, -19.5682, 23.0721** is the 20% darker color. If you saturate the color by 10%, you get **142.3250, -26.2892, 32.1640**, and if you desaturate by 10%, it is **156.9950, -15.7735, 19.2984**.

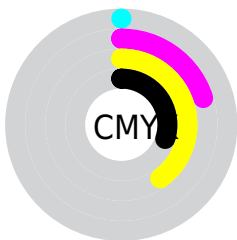
# Distribution



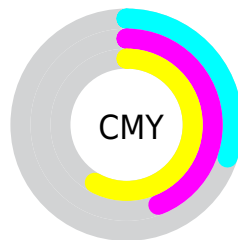
- Red (70%)
- Green (56%)
- Blue (42%)



- Red (70%)
- Yellow (70%)
- Blue (42%)



- Cyan (0%)
- Magenta (20%)
- Yellow (40%)
- Black (30%)



- Cyan (30%)
- Magenta (44%)
- Yellow (58%)

# Brightness & Saturation Gradients

These gradients show how the YUV color 149.6600, -21.0314, 25.7312 changes by changing the brightness by 10 percent. The first figure shows a shift by +10% for each color and the second figure -10%.

Similar to the brightness gradients but the following saturation gradients show a change of the YUV color 149.6600, -21.0314, 25.7312 by changing the saturation by 10% instead.



■ 149.6600,  
-21.0314, 25.7312

■ 149.6600,  
-21.0314, 25.7312

255.0000, 0.0000,  
0.0000

■ 123.2900,  
-19.8630, 24.3017

■ 204.3290,  
-22.3472, 27.7755

■ 98.6920, -19.5682,  
23.0721

■ 229.5240,  
-21.4573, 22.3425

■ 74.3220, -18.3997,  
21.6426

■ 249.1520,  
-17.3299, 5.1287

■ 51.2400, -17.3733,  
19.0835

■ 253.5180, -5.6784,  
1.2997

■ 30.2120, -14.8945,  
17.3541

■ 7.7740, -3.8326,  
15.9842

■ 0.0000, 0.0000,

0.0000

■ 149.6600,  
-21.0314, 25.7312

■ 149.6600,  
-21.0314, 25.7312

■ 142.3250,  
-26.2892, 32.1640

■ 156.9950,  
-15.7735, 19.2984

■ 134.9900,  
-31.5471, 38.5968

■ 164.3300,  
-10.5157, 12.8656

■ 127.6550,  
-36.8049, 45.0296

■ 171.6650, -5.2578,  
6.4328

■ 120.3200,  
-42.0628, 51.4624

■ 179.0000, 0.0000,  
0.0000

■ 113.0990,  
-46.8838, 57.7952

■ 186.2210, 4.8210,  
-6.3328

■ 106.3510,  
-52.4310, 63.7132

■ 193.5560, 10.0789,  
-12.7656

■ 200.8910, 15.3367,  
-19.1984

■ 208.2260, 20.5946,  
-25.6312

■ 214.0790, 20.1741,  
-30.7643

# Harmonies

## Analogous

The Analogous color harmony consists of three colors that are next to each other on the color wheel.



151.3330, -14.9542, 36.5420



149.6600, -21.0314, 25.7312



147.7350, -21.5614, 9.0024

# Triad

The Triadic color harmony groups three colors that are evenly spaced from another and form a triangle on the color wheel.



149.6600, -21.0314, 25.7312



138.1080, 9.3138, -47.4527



152.4800, 15.5394, 9.2260

# Complementary

The Complementary color scheme is a pair of colors which are on the opposite of each other on the color wheel.



149.6600, -21.0314, 25.7312



136.3400, 21.0314, -25.7312

# Split Complementary

Split-complementary colors differ from the complementary color scheme. The scheme consists of three colors, the original color and two neighbors of the complement color.



149.0470, 22.1618, -14.9502



149.6600, -21.0314, 25.7312



138.7190, 19.3655, -51.4966

# Square

The Square scheme is like the rectangle color scheme, but the four colors are evenly spaced on the color wheel.



149.6600, -21.0314, 25.7312



141.4770, -3.6862, -31.1133



143.3600, 23.9795, -38.0267



153.3700, 5.7336, 27.7395



# Rectangle

The Rectangle color scheme consists of four colors that form a rectangle on the color wheel.



149.6600, -21.0314, 25.7312



145.6840, -17.5922, -4.1079



143.3600, 23.9795, -38.0267



151.8210, 18.3292, 1.0340

# Sweetspot

The Sweet Spot groups the original color and five complimentary colors.



149.6600, -21.0314, 25.7312



220.5900, -8.1789, 10.0066



132.6320, 5.1114, 40.6647



110.4800, -4.6736, 5.7180



245.0000, 0.0000, 0.0000



117.0000, 0.0000, 0.0000



# Same Dimension

The Same Dimension uses a secret algorithm to generate beautiful new colors.



149.6600, -21.0314, 25.7312



186.4740, -32.2787, 39.9263



170.7920, -31.4495, 7.1984



85.6260, -2.7736, 2.9590



90.9460, -44.8364, 54.4214



15.4050, -7.5947, 9.2918



# Inverse Universe

The Inverse Universe completely reimagines the original color for something new.



136.3400, 21.0314, -25.7312



165.9390, 32.5681, -39.4115



115.2080, 31.4495, -7.1984



83.9610, 2.4842, -3.4738



62.6410, 44.5470, -54.9362

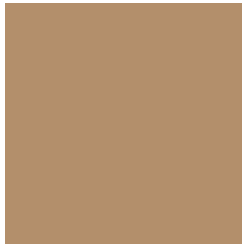


10.5950, 7.5947, -9.2918



# Previews

## White Background



This preview shows how the YUV color 149.6600, -21.0314, 25.7312 looks on a white background.

## Color Contrast Check

Large Text (above 18pt) WCAG AA × Fail

Any Text WCAG AA × Fail

Large Text (above 18pt) WCAG AAA × Fail

Any Text WCAG AAA × Fail



# Black Background



This preview shows how the YUV color 149.6600, -21.0314, 25.7312 looks on a black background.

## Color Contrast Check

Large Text (above 18pt) WCAG AA ✓ Pass

Any Text WCAG AA ✓ Pass

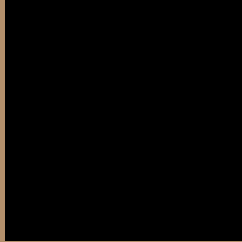
Large Text (above 18pt) WCAG AAA ✓ Pass

Any Text WCAG AAA ✓ Pass

If you want to check with other color combinations, try the [Color Contrast Checker](#).

# YUV 149.6600, -21.0314, 25.7312

## Background



This preview shows how black text looks on a background with the YUV color 149.6600, -21.0314, 25.7312.



This preview shows how white text looks on a background with the YUV color 149.6600, -21.0314,

25.7312.

# Color Blindness Simulation

Color vision deficiency is a very complex topic, and I could not describe the different causes any better than Wikipedia does, so if you want to learn more, you should check out their [article about color blindness](#).

## Dichromacy



### Original Color

149.6600, -21.0314, 25.7312

### Protanopia

148.7290, -19.0934, 10.7617

### Deuteranopia

149.3610, -20.8840, 25.1164



## Tritanopia

152.5950, -2.2653, 26.6652

# Trichromacy



## Original Color

149.6600, -21.0314, 25.7312

## Protanomaly

148.9470, -19.6939, 16.7095

## Deuteranomaly

149.3610, -20.8840, 25.1164

## Tritanomaly

151.7600, -9.2487, 26.5205

# Monochromacy



## Original Color

149.6600, -21.0314, 25.7312

## Achromatopsia

150.0000, 0.0000, 0.0000

## Achromatomaly

149.7040, -7.7421, 9.9066

# CSS Examples

## Text

The CSS property to change the color of the text to YUV 149.6600, -21.0314, 25.7312 is called "color". The color property can be set on classes, ids or directly on the HTML element.

This example shows how text in the color `rgb(179, 143, 107)` looks like.

```
.text, #text, p{  
    color:rgb(179, 143, 107)  
}
```

If you want to add a text shadow in that color use the text-shadow property, you can generate a text shadow directly with our [CSS Text Shadow Generator](#).

Here you see how black text with a 4 pixel rgb(179, 143, 107) colored shadow looks like.

```
.shadow{ text-shadow: 4px 4px 2px rgb(179, 143, 107) }
```

## Border

The CSS property to change the border of an element to YUV 149.6600, -21.0314, 25.7312 is called "border".

The border property can be set on classes, ids or directly on the HTML element.

This example shows the color as border, it can be applied via the CSS property "border" or "border-color".

```
.border, #border, table{ border:4px solid rgb(179, 143, 107) }
```



If only the border color should be changed use the property `border-color`.

```
.border{ border-color:rgb(179, 143, 107) }
```

If you want to add a box shadow in that color use:

Here you see how a box with a 4 pixel `rgb(179, 143, 107)` colored shadow looks like.

```
.boxshadow{ -moz-box-shadow:4px 4px 4px  
4px rgb(179, 143, 107); -webkit-box-  
shadow:4px 4px 4px 4px rgb(179, 143, 107);  
box-shadow:4px 4px 4px 4px rgb(179, 143,  
107) }
```

# Background

The CSS property to change the background color of an element to YUV 149.6600, -21.0314, 25.7312 is called "background". The background property can be set on classes, ids or directly on the HTML element.

```
.background, #background, body{  
background: rgb(179, 143, 107) }
```

If only the background color should be changed can be used:

```
.background{ background-color: rgb(179,  
143, 107) }
```

This example shows the color as background, it is applied via the CSS property "background".

To optimize and compress your CSS code, you can use our [online CSS compressor and optimizer](#) based on csstidy. If you want to create a linear or radial gradient as background or border, check our [CSS Gradient Generator](#).

Hey! You found this booklet interesting? Support Converting Colors with the new Membership Option!

The pro membership hides all ads, plus gives you double the colors in the color bucket, and more awesome pro features!

**[Learn more, Memberships starting at \\$2.50/m!](#)**

**Follow me  
on Twitter!**

@ConvertingColor