

Converting Colors

YUV(149.7660, -28.4786,
34.4082)

Have a look what the booklet for
YUV(149.7660, -28.4786, 34.4082)
contains.

YUV(149.7660, -28.4786, 34.4082)	3
<i>Conversions</i>	4
<i>Details</i>	6
<i>Harmonies</i>	12
<i>Previews</i>	24
<i>Color Blindness Simulation</i>	28
<i>CSS Examples</i>	31

Color

**YUV(149.7660, -28.4786,
34.4082)**

Conversions

Conversions Part 1

Format	Color
Hex	BD8D5C
RGB	189, 141, 92
RGB Percent	74%, 55%, 36%
CMY	0.2588, 0.4471, 0.6392
CMYK	0.00, 0.25, 0.51, 0.26
HSL	30°, 42%, 55%
HSV	30°, 51%, 74%
XYZ	32.4429, 30.6413, 14.3296
YIQ	149.7660, 44.3370, -5.0630

Conversions

Conversions Part 2

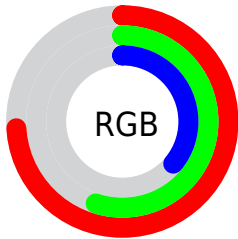
Format	Color
R _Y B	187, 189, 92
Decimal	12422492
CIE Lab	62.20, 12.35, 33.10
CIE LCh	62, 35.331, 69.543
Yxy	30.6413, 0.4191, 0.3958
Android (android.graphics.Color)	4290612572 (0xFFBD8D5C)
YUV	149.7660, -28.4786, 34.4082
Hunter-Lab	55.3546, 7.7471, 23.3998

Details

The YUV color **149.7660, -28.4786, 34.4082** is a dark color, and the websafe version is hex **CC9966**. A complement of this color would be **131.2340, 28.4786, -34.4082**, and the grayscale version is **150.0000, 0.0000, 0.0000**.

A 20% lighter version of the original color is **204.6200, -30.3787, 37.1673**, and **98.2000, -26.7206, 30.5196** is the 20% darker color. If you saturate the color by 10%, you get **142.3170, -34.1733, 40.9410**, and if you desaturate by 10%, it is **157.2150, -22.7840, 27.8754**.

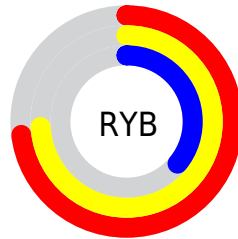
Distribution



Red (74%)

Green (55%)

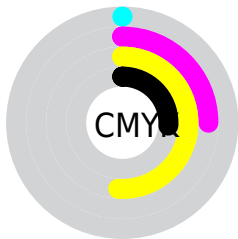
Blue (36%)



Red (73%)

Yellow (74%)

Blue (36%)

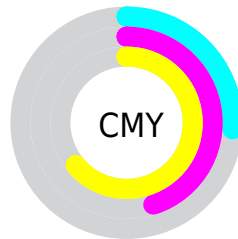


Cyan (0%)

Magenta (25%)

Yellow (51%)

Black (26%)



Cyan (26%)

Magenta (45%)

Yellow (64%)

Brightness & Saturation Gradients

These gradients show how the YUV color 149.7660, -28.4786, 34.4082 changes by changing the brightness by 10 percent. The first figure shows a shift by +10% for each color and the second figure -10%.

Similar to the brightness gradients but the following saturation gradients show a change of the YUV color 149.7660, -28.4786, 34.4082 by changing the saturation by 10% instead.

■ 149.7660,
-28.4786, 34.4082

■ 149.7660,
-28.4786, 34.4082

■ 255.0000, 0.0000,
0.0000

■ 123.3960,
-27.3102, 32.9787

■ 204.6200,
-30.3787, 37.1673

■ 98.2000, -26.7206,
30.5196

■ 226.5260,
-27.8673, 24.9717

■ 73.5310, -25.4048,
28.4753

■ 246.0400,
-24.1767, 7.8579

■ 50.3350, -24.8152,
26.0162

■ 251.5800,
-13.1039, 2.9993

■ 30.2340, -14.9054,
20.8428

■ 254.8860, -0.4368,
0.1000

■ 9.2690, -4.5696,
19.0581

■ 0.0000, 0.0000,

0.0000

■ 149.7660,
-28.4786, 34.4082

■ 149.7660,
-28.4786, 34.4082

■ 142.3170,
-34.1733, 40.9410

■ 157.2150,
-22.7840, 27.8754

■ 134.2810,
-39.5785, 47.9886

■ 165.2510,
-17.3787, 20.8279

■ 126.8320,
-45.2732, 54.5213

■ 172.7000,
-11.6841, 14.2951

■ 119.3830,
-50.9678, 61.0541

■ 180.1490, -5.9895,
7.7623

■ 112.2760,
-55.3521, 67.2869

■ 188.1850, -0.5842,
0.7148

■ 195.5200, 4.6736,
-5.7180

■ 202.9690, 10.3683,
-12.2508

■ 211.0050, 15.7735,
-19.2984

■ 217.6560, 18.4106,
-25.1313

Harmonies

Analogous

The Analogous color harmony consists of three colors that are next to each other on the color wheel.



151.5580, -19.5021, 48.6226



149.7660, -28.4786, 34.4082



147.3950, -29.2817, 11.9316

Triad

The Triadic color harmony groups three colors that are evenly spaced from another and form a triangle on the color wheel.



149.7660, -28.4786, 34.4082



127.9300, 15.8105, -77.9916



154.2120, 22.0805, 11.2151

Complementary

The Complementary color scheme is a pair of colors which are on the opposite of each other on the color wheel.



149.7660, -28.4786, 34.4082



131.2340, 28.4786, -34.4082

Split Complementary

Split-complementary colors differ from the complementary color scheme. The scheme consists of three colors, the original color and two neighbors of the complement color.



148.3970, 31.3563, -24.0272



149.7660, -28.4786, 34.4082



118.4010, 34.8053, -103.8377

Square

The Square scheme is like the rectangle color scheme, but the four colors are evenly spaced on the color wheel.



149.7660, -28.4786, 34.4082



137.3460, -5.1006, -44.1534



136.7680, 35.1174, -63.8175



154.6470, 9.0480, 38.0206

Rectangle

The Rectangle color scheme consists of four colors that form a rectangle on the color wheel.



149.7660, -28.4786, 34.4082



145.1370, -24.7175, -5.3821



136.7680, 35.1174, -63.8175



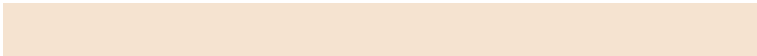
152.4710, 25.8968, 0.4639

Sweetspot

The Sweet Spot groups the original color and five complimentary colors.



149.7660, -28.4786, 34.4082



230.2160, -10.9525, 12.9656



126.5890, 7.1046, 54.7344



113.0350, -6.4263, 7.8623



250.0000, 0.0000, 0.0000



122.0000, 0.0000, 0.0000

Same Dimension

The Same Dimension uses a secret algorithm to generate beautiful new colors.



149.7660, -28.4786, 34.4082



183.6470, -44.6890, 53.8066



177.9420, -42.3694, 9.6979



90.6260, -2.7736, 2.9590



94.2020, -46.4416, 55.9508



18.0740, -8.9105, 11.3361

Inverse Universe

The Inverse Universe completely reimagines the original color for something new.



131.2340, 28.4786, -34.4082



154.3530, 44.6890, -53.8066



103.0580, 42.3694, -9.6979



88.9610, 2.4842, -3.4738



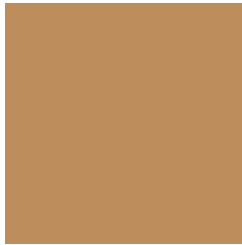
63.7980, 46.4416, -55.9508



12.3390, 9.1999, -10.8213

Previews

White Background



This preview shows how the YUV color 149.7660, -28.4786, 34.4082 looks on a white background.

Color Contrast Check

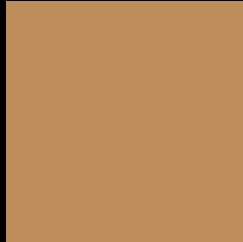
Large Text (above 18pt) WCAG AA × Fail

Any Text WCAG AA × Fail

Large Text (above 18pt) WCAG AAA × Fail

Any Text WCAG AAA × Fail

Black Background



This preview shows how the YUV color 149.7660, -28.4786, 34.4082 looks on a black background.

Color Contrast Check

Large Text (above 18pt) WCAG AA ✓ Pass

Any Text WCAG AA ✓ Pass

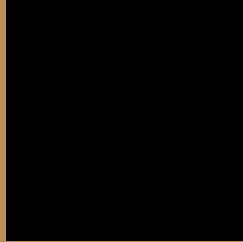
Large Text (above 18pt) WCAG AAA ✓ Pass

Any Text WCAG AAA ✓ Pass

If you want to check with other color combinations, try the [Color Contrast Checker](#).

YUV 149.7660, -28.4786, 34.4082

Background



This preview shows how black text looks on a background with the YUV color 149.7660, -28.4786, 34.4082.



This preview shows how white text looks on a background with the YUV color 149.7660, -28.4786,

Color Blindness Simulation

Color vision deficiency is a very complex topic, and I could not describe the different causes any better than Wikipedia does, so if you want to learn more, you should check out their [article about color blindness](#).

Dichromacy



Original Color

149.7660, -28.4786, 34.4082

Protanopia

148.6170, -25.9402, 13.4909

Deuteranopia

149.6190, -28.8992, 29.2751



Tritanopia

153.1940, -4.0396, 35.7869

Trichromacy



Original Color

149.7660, -28.4786, 34.4082

Protanomaly

148.8460, -26.5461, 21.1831

Deuteranomaly

149.6300, -28.9046, 31.0195

Tritanomaly

152.1910, -12.9122, 34.9125

Monochromacy



Original Color

149.7660, -28.4786, 34.4082

Achromatopsia

150.0000, 0.0000, 0.0000

Achromatomaly

150.0310, -10.3683, 12.2508

CSS Examples

Text

The CSS property to change the color of the text to YUV 149.7660, -28.4786, 34.4082 is called "color". The color property can be set on classes, ids or directly on the HTML element.

This example shows how text in the color `rgb(189, 141, 92)` looks like.

```
.text, #text, p{  
    color:rgb(189, 141, 92)  
}
```

If you want to add a text shadow in that color use the text-shadow property, you can generate a text shadow directly with our [CSS Text Shadow Generator](#).

Here you see how black text with a 4 pixel rgb(189, 141, 92) colored shadow looks like.

```
.shadow{ text-shadow: 4px 4px 2px rgb(189, 141, 92) }
```

Border

The CSS property to change the border of an element to YUV 149.7660, -28.4786, 34.4082 is called "border".

The border property can be set on classes, ids or directly on the HTML element.

This example shows the color as border, it can be applied via the CSS property "border" or "border-color".

```
.border, #border, table{ border:4px solid rgb(189, 141, 92) }
```


If only the border color should be changed use the property `border-color`.

```
.border{ border-color:rgb(189, 141, 92) }
```

If you want to add a box shadow in that color use:

Here you see how a box with a 4 pixel `rgb(189, 141, 92)` colored shadow looks like.

```
.boxshadow{ -moz-box-shadow:4px 4px 4px  
4px rgb(189, 141, 92); -webkit-box-  
shadow:4px 4px 4px 4px rgb(189, 141, 92);  
box-shadow:4px 4px 4px 4px rgb(189, 141,  
92) }
```

Background

The CSS property to change the background color of an element to YUV 149.7660, -28.4786, 34.4082 is called "background". The background property can be set on classes, ids or directly on the HTML element.

```
.background, #background, body{  
background: rgb(189, 141, 92) }
```

If only the background color should be changed can be used:

```
.background{ background-color: rgb(189,  
141, 92) }
```

This example shows the color as background, it is applied via the CSS property "background".

To optimize and compress your CSS code, you can use our [online CSS compressor and optimizer](#) based on csstidy. If you want to create a linear or radial gradient as background or border, check our [CSS Gradient Generator](#).

Hey! You found this booklet interesting? Support Converting Colors with the new Membership Option!

The pro membership hides all ads, plus gives you double the colors in the color bucket, and more awesome pro features!

[Learn more, Memberships starting at \\$2.50/m!](#)

**Follow me
on Twitter!**

@ConvertingColor