

Converting Colors

YUV(149.9890, -13.3056,
21.0576)

Have a look what the booklet for
YUV(149.9890, -13.3056, 21.0576)
contains.

YUV(149.9890, -13.3056, 21.0576)	3
<i>Conversions</i>	4
<i>Details</i>	6
<i>Harmonies</i>	12
<i>Previews</i>	24
<i>Color Blindness Simulation</i>	28
<i>CSS Examples</i>	31

Color

**YUV(149.9890, -13.3056,
21.0576)**

Conversions

Conversions Part 1

Format	Color
Hex	AE8F7B
RGB	174, 143, 123
RGB Percent	68%, 56%, 48%
CMY	0.3176, 0.4392, 0.5176
CMYK	0.00, 0.18, 0.29, 0.32
HSL	24°, 24%, 58%
HSV	24°, 29%, 68%
XYZ	30.8532, 30.0737, 22.9175
YIQ	149.9890, 24.8960, 0.3520

Conversions

Conversions Part 2

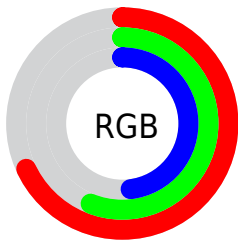
Format	Color
RYB	174, 156, 123
Decimal	11439995
CIELab	61.72, 8.64, 15.03
CIElCh	62, 17.334, 60.105
Yxy	30.0737, 0.3680, 0.3587
Android (android.graphics.Color)	4289630075 (0xFFAE8F7B)
YUV	149.9890, -13.3056, 21.0576
Hunter-Lab	54.8394, 4.4567, 13.6102

Details

The YUV color $149.9890, -13.3056, 21.0576$ is a dark color, and the websafe version is hex $CC9999$. A complement of this color would be $147.0110, 13.3056, -21.0576$, and the grayscale version is $150.0000, 0.0000, 0.0000$.

A 20% lighter version of the original color is $204.4730, -14.0372, 22.3872$, and $99.2060, -12.4266, 19.1133$ is the 20% darker color. If you saturate the color by 10%, you get $141.5940, -17.5478, 28.4201$, and if you desaturate by 10%, it is $158.3840, -9.0633, 13.6952$.

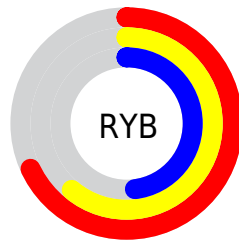
Distribution



Red (68%)

Green (56%)

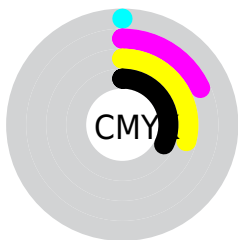
Blue (48%)



Red (68%)

Yellow (61%)

Blue (48%)

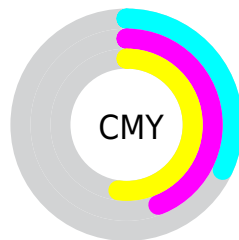


Cyan (0%)

Magenta (18%)

Yellow (29%)

Black (32%)



Cyan (32%)

Magenta (44%)

Yellow (52%)

Brightness & Saturation Gradients

These gradients show how the YUV color 149.9890, -13.3056, 21.0576 changes by changing the brightness by 10 percent. The first figure shows a shift by +10% for each color and the second figure -10%.

Similar to the brightness gradients but the following saturation gradients show a change of the YUV color 149.9890, -13.3056, 21.0576 by changing the saturation by 10% instead.

■ 149.9890,
-13.3056, 21.0576

■ 149.9890,
-13.3056, 21.0576

■ 255.0000, 0.0000,
0.0000

■ 123.8040,
-12.7214, 20.3429

■ 204.4730,
-14.0372, 22.3872

■ 99.2060, -12.4266,
19.1133

■ 231.4620,
-14.0318, 20.6428

■ 74.7220, -11.6949,
17.7838

■ 251.0900, -9.9044,
3.4291

■ 52.2380, -10.9633,
16.4543

■ 30.2980, -11.9789,
15.5247

■ 7.4750, -3.6852,
15.3694

■ 0.0000, 0.0000,

0.0000

■ 149.9890,
-13.3056, 21.0576

■ 149.9890,
-13.3056, 21.0576

■ 141.5940,
-17.5478, 28.4201

■ 158.3840, -9.0633,
13.6952

■ 133.6720,
-22.5163, 35.3677

■ 166.3060, -4.0949,
6.7476

■ 125.2770,
-26.7586, 42.7301

■ 174.7010, 0.1474,
-0.6148

■ 117.3550,
-31.7270, 49.6777

■ 182.6230, 5.1159,
-7.5624

■ 108.9600,
-35.9693, 57.0401

■ 191.0180, 9.3581,
-14.9248

■ 101.1520,
-40.5009, 63.8877

■ 198.8260, 13.8898,
-21.7724

■ 92.6430, -45.1800,
71.3501

■ 207.3350, 18.5688,
-29.2348

■ 91.9420, -45.3274,
71.9649

■ 214.9320, 19.7535,
-35.8974

■ 220.8020, 16.8596,
-41.0454

Harmonies

Analogous

The Analogous color harmony consists of three colors that are next to each other on the color wheel.



150.9880, -8.3751, 26.3205



149.9890, -13.3056, 21.0576



148.5810, -14.5834, 10.8915

Triad

The Triadic color harmony groups three colors that are evenly spaced from another and form a triangle on the color wheel.



149.9890, -13.3056, 21.0576



143.5190, 2.7021, -26.7652



150.6270, 12.5089, 1.2041

Complementary

The Complementary color scheme is a pair of colors which are on the opposite of each other on the color wheel.



149.9890, -13.3056, 21.0576



147.0110, 13.3056, -21.0576

Split Complementary

Split-complementary colors differ from the complementary color scheme. The scheme consists of three colors, the original color and two neighbors of the complement color.



147.9240, 15.3205, -13.9653



149.9890, -13.3056, 21.0576



142.8480, 10.4279, -31.4387

Square

The Square scheme is like the rectangle color scheme, but the four colors are evenly spaced on the color wheel.



149.9890, -13.3056, 21.0576



144.7070, -5.7716, -15.5290



145.0210, 14.7796, -27.2054



152.1080, 6.3558, 14.8143

Rectangle

The Rectangle color scheme consists of four colors that form a rectangle on the color wheel.



149.9890, -13.3056, 21.0576



147.1670, -13.3933, 2.4845



145.0210, 14.7796, -27.2054



149.9360, 13.8356, -4.3289

Sweetspot

The Sweet Spot groups the original color and five complimentary colors.



149.9890, -13.3056, 21.0576



217.6760, -5.2633, 8.1771



141.7830, 6.0230, 28.2543



108.8220, -3.3632, 5.4181



242.0000, 0.0000, 0.0000



115.0000, 0.0000, 0.0000

Same Dimension

The Same Dimension uses a secret algorithm to generate beautiful new colors.



149.9890, -13.3056, 21.0576



189.8180, -20.6163, 32.6086



164.6640, -20.5404, 8.1877



82.4520, -2.1948, 3.9886



79.4830, -39.1851, 61.8434



12.1600, -5.9949, 9.5067

Inverse Universe

The Inverse Universe completely reimagines the original color for something new.



147.0110, 13.3056, -21.0576



185.1820, 20.6163, -32.6086



132.3360, 20.5404, -8.1877



81.9610, 2.4842, -3.4738



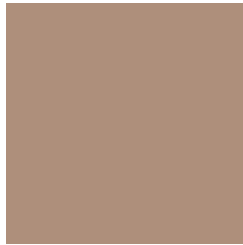
70.5170, 39.1851, -61.8434



10.8400, 5.9949, -9.5067

Previews

White Background



This preview shows how the YUV color 149.9890, -13.3056, 21.0576 looks on a white background.

Color Contrast Check

Large Text (above 18pt) WCAG AA × Fail

Any Text WCAG AA × Fail

Large Text (above 18pt) WCAG AAA × Fail

Any Text WCAG AAA × Fail

Black Background



This preview shows how the YUV color 149.9890, -13.3056, 21.0576 looks on a black background.

Color Contrast Check

Large Text (above 18pt) WCAG AA ✓ Pass

Any Text WCAG AA ✓ Pass

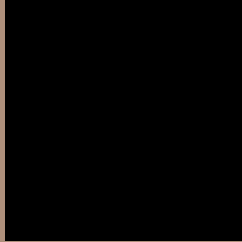
Large Text (above 18pt) WCAG AAA ✓ Pass

Any Text WCAG AAA ✓ Pass

If you want to check with other color combinations, try the [Color Contrast Checker](#).

YUV 149.9890, -13.3056, 21.0576

Background



This preview shows how black text looks on a background with the YUV color 149.9890, -13.3056, 21.0576.



This preview shows how white text looks on a background with the YUV color 149.9890, -13.3056, 21.0576.

Color Blindness Simulation

Color vision deficiency is a very complex topic, and I could not describe the different causes any better than Wikipedia does, so if you want to learn more, you should check out their [article about color blindness](#).

Dichromacy



Original Color

149.9890, -13.3056, 21.0576

Protanopia

148.7700, -11.2256, 7.2177

Deuteranopia

149.6900, -13.1582, 20.4429



Tritanopia

151.6160, -0.7967, 22.2618

Trichromacy



Original Color

149.9890, -13.3056, 21.0576

Protanomaly

149.2760, -11.9681, 12.0359

Deuteranomaly

149.6900, -13.1582, 20.4429

Tritanomaly

150.7640, -5.3067, 22.1320

Monochromacy



Original Color

149.9890, -13.3056, 21.0576

Achromatopsia

150.0000, 0.0000, 0.0000

Achromatomaly

149.7900, -4.8265, 8.0772

CSS Examples

Text

The CSS property to change the color of the text to YUV 149.9890, -13.3056, 21.0576 is called "color". The color property can be set on classes, ids or directly on the HTML element.

This example shows how text in the color `rgb(174, 143, 123)` looks like.

```
.text, #text, p{  
    color:rgb(174, 143, 123)  
}
```

If you want to add a text shadow in that color use the text-shadow property, you can generate a text shadow directly with our [CSS Text Shadow Generator](#).

Here you see how black text with a 4 pixel rgb(174, 143, 123) colored shadow looks like.

```
.shadow{ text-shadow: 4px 4px 2px rgb(174, 143, 123) }
```

Border

The CSS property to change the border of an element to YUV 149.9890, -13.3056, 21.0576 is called "border".

The border property can be set on classes, ids or directly on the HTML element.

This example shows the color as border, it can be applied via the CSS property "border" or "border-color".

```
.border, #border, table{ border:4px solid rgb(174, 143, 123) }
```


If only the border color should be changed use the property `border-color`.

```
.border{ border-color:rgb(174, 143, 123) }
```

If you want to add a box shadow in that color use:

Here you see how a box with a 4 pixel `rgb(174, 143, 123)` colored shadow looks like.

```
.boxshadow{ -moz-box-shadow:4px 4px 4px  
4px rgb(174, 143, 123); -webkit-box-  
shadow:4px 4px 4px 4px rgb(174, 143, 123);  
box-shadow:4px 4px 4px 4px rgb(174, 143,  
123) }
```

Background

The CSS property to change the background color of an element to YUV 149.9890, -13.3056, 21.0576 is called "background". The background property can be set on classes, ids or directly on the HTML element.

```
.background, #background, body{  
background: rgb(174, 143, 123) }
```

If only the background color should be changed can be used:

```
.background{ background-color: rgb(174,  
143, 123) }
```

This example shows the color as background, it is applied via the CSS property "background".

To optimize and compress your CSS code, you can use our [online CSS compressor and optimizer](#) based on csstidy. If you want to create a linear or radial gradient as background or border, check our [CSS Gradient Generator](#).

Hey! You found this booklet interesting? Support Converting Colors with the new Membership Option!

The pro membership hides all ads, plus gives you double the colors in the color bucket, and more awesome pro features!

[Learn more, Memberships starting at \\$2.50/m!](#)

**Follow me
on Twitter!**

@ConvertingColor