

Converting Colors

YUV(150.2020, -12.9176,
36.6568)

Have a look what the booklet for
YUV(150.2020, -12.9176, 36.6568)
contains.

YUV(150.2020, -12.9176, 36.6568)	3
<i>Conversions</i>	4
<i>Details</i>	6
<i>Harmonies</i>	12
<i>Previews</i>	24
<i>Color Blindness Simulation</i>	28
<i>CSS Examples</i>	31

Color

**YUV(150.2020, -12.9176,
36.6568)**

Conversions

Conversions Part 1

Format	Color
Hex	C0867C
RGB	192, 134, 124
RGB Percent	75%, 53%, 49%
CMY	0.2471, 0.4745, 0.5137
CMYK	0.00, 0.30, 0.35, 0.25
HSL	9°, 35%, 62%
HSV	9°, 35%, 75%
XYZ	33.9014, 29.7119, 23.0170
YIQ	150.2020, 37.7780, 9.1860

Conversions

Conversions Part 2

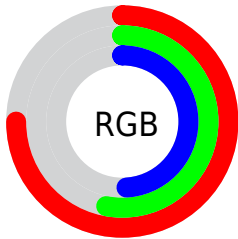
Format	Color
R_{YB}	192, 136, 124
Decimal	12617340
CIE Lab	61.40, 20.95, 14.32
CIE LCh	61, 25.375, 34.345
Yxy	29.7119, 0.3913, 0.3430
Android (android.graphics.Color)	4290807420 (0xFFC0867C)
YUV	150.2020, -12.9176, 36.6568
Hunter-Lab	54.5086, 15.6273, 13.1201

Details

The YUV color **150.2020, -12.9176, 36.6568** is a light color, and the websafe version is hex **CC9999**. A complement of this color would be **165.7980, 12.9176, -36.6568**, and the grayscale version is **150.0000, 0.0000, 0.0000**.

A 20% lighter version of the original color is **205.2840, -13.9440, 39.2159**, and **98.8210, -11.7438, 33.4830** is the 20% darker color. If you saturate the color by 10%, you get **138.6440, -16.5865, 46.7932**, and if you desaturate by 10%, it is **161.7600, -9.2487, 26.5205**.

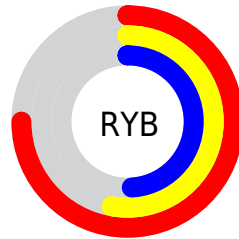
Distribution



Red (75%)

Green (53%)

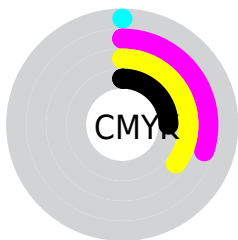
Blue (49%)



Red (75%)

Yellow (53%)

Blue (49%)

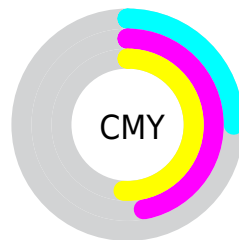


Cyan (0%)

Magenta (30%)

Yellow (35%)

Black (25%)



Cyan (25%)

Magenta (47%)

Yellow (51%)

Brightness & Saturation Gradients

These gradients show how the YUV color 150.2020, -12.9176, 36.6568 changes by changing the brightness by 10 percent. The first figure shows a shift by +10% for each color and the second figure -10%.

Similar to the brightness gradients but the following saturation gradients show a change of the YUV color 150.2020, -12.9176, 36.6568 by changing the saturation by 10% instead.

■ 150.2020,
-12.9176, 36.6568

■ 150.2020,
-12.9176, 36.6568

■ 255.0000, 0.0000,
0.0000

■ 123.7180,
-12.1860, 35.3273

■ 205.2840,
-13.9440, 39.2159

■ 98.8210, -11.7438,
33.4830

■ 225.7060,
-10.7011, 25.6908

■ 74.1520, -10.4279,
31.4387

■ 245.9210, -6.8631,
7.9623

■ 50.9560, -9.8383,
28.9796

■ 27.9450, -9.8329,
27.2352

■ 11.3620, -5.6015,
23.3615

■ 0.0000, 0.0000,

0.0000

■ 150.2020,
-12.9176, 36.6568

■ 150.2020,
-12.9176, 36.6568

■ 138.6440,
-16.5865, 46.7932

■ 161.7600, -9.2487,
26.5205

■ 126.4990,
-19.9660, 57.4444

■ 173.9050, -5.8692,
15.8693

■ 114.8270,
-24.0717, 67.6807

■ 185.5770, -1.7635,
5.6330

■ 102.6820,
-27.4512, 78.3319

■ 197.7220, 1.6161,
-5.0182

■ 91.1240, -31.1201,
88.4683

■ 209.2800, 5.2850,
-15.1546

■ 79.5660, -34.7890,
98.6046

■ 220.8380, 8.9539,
-25.2909

■ 73.8440, -36.4051,
103.6228

■ 232.6410, 11.0230,
-35.6422

■ 236.1630, 9.2866,
-38.7310

Harmonies

Analogous

The Analogous color harmony consists of three colors that are next to each other on the color wheel.



151.5360, -2.7292, 35.4869



150.2020, -12.9176, 36.6568



148.6110, -20.0212, 28.4052

Triad

The Triadic color harmony groups three colors that are evenly spaced from another and form a triangle on the color wheel.



150.2020, -12.9176, 36.6568



141.1140, -6.4652, -26.4100



146.5410, 22.9043, -19.7685

Complementary

The Complementary color scheme is a pair of colors which are on the opposite of each other on the color wheel.



150.2020, -12.9176, 36.6568



165.7980, 12.9176, -36.6568

Split Complementary

Split-complementary colors differ from the complementary color scheme. The scheme consists of three colors, the original color and two neighbors of the complement color.



141.1100, 23.1168, -41.3155



150.2020, -12.9176, 36.6568



138.0330, 6.3927, -43.8789

Square

The Square scheme is like the rectangle color scheme, but the four colors are evenly spaced on the color wheel.



150.2020, -12.9176, 36.6568



144.6020, -16.5658, -6.6670



137.2630, 17.6183, -51.0967



150.5010, 17.0080, 4.8226

Rectangle

The Rectangle color scheme consists of four colors that form a rectangle on the color wheel.



150.2020, -12.9176, 36.6568



147.2030, -21.2991, 18.2390



137.2630, 17.6183, -51.0967



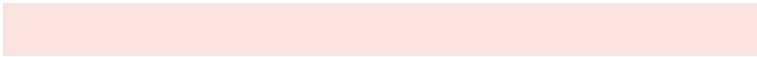
145.1980, 23.0734, -27.3606

Sweetspot

The Sweet Spot groups the original color and five complimentary colors.



150.2020, -12.9176, 36.6568



232.7200, -5.2850, 15.1546



151.0580, 15.7474, 35.9061



114.9580, -2.9373, 8.8068



252.0000, 0.0000, 0.0000



125.0000, 0.0000, 0.0000

Same Dimension

The Same Dimension uses a secret algorithm to generate beautiful new colors.



150.2020, -12.9176, 36.6568



183.6840, -20.5502, 58.1591



169.5730, -22.4675, 19.6685



91.1640, -2.0529, 5.1182



62.2270, -30.6779, 86.6239



12.8020, -6.3114, 17.7136

Inverse Universe

The Inverse Universe completely reimagines the original color for something new.



165.7980, 12.9176, -36.6568



208.3160, 20.5502, -58.1591



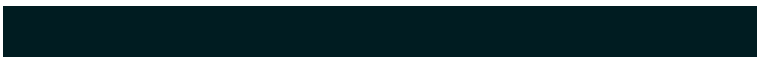
146.4270, 22.4675, -19.6685



92.8360, 2.0529, -5.1182



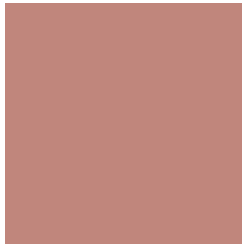
98.7730, 30.6779, -86.6239



20.1980, 6.3114, -17.7136

Previews

White Background



This preview shows how the YUV color 150.2020, -12.9176, 36.6568 looks on a white background.

Color Contrast Check

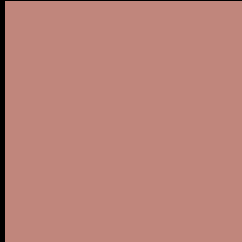
Large Text (above 18pt) WCAG AA ✓ Pass

Any Text WCAG AA × Fail

Large Text (above 18pt) WCAG AAA × Fail

Any Text WCAG AAA × Fail

Black Background



This preview shows how the YUV color 150.2020, -12.9176, 36.6568 looks on a black background.

Color Contrast Check

Large Text (above 18pt) WCAG AA ✓ Pass

Any Text WCAG AA ✓ Pass

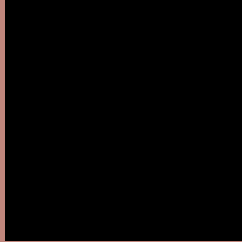
Large Text (above 18pt) WCAG AAA ✓ Pass

Any Text WCAG AAA × Fail

If you want to check with other color combinations, try the [Color Contrast Checker](#).

YUV 150.2020, -12.9176, 36.6568

Background



This preview shows how black text looks on a background with the YUV color 150.2020, -12.9176, 36.6568.



This preview shows how white text looks on a background with the YUV color 150.2020, -12.9176,

36.6568.

Color Blindness Simulation

Color vision deficiency is a very complex topic, and I could not describe the different causes any better than Wikipedia does, so if you want to learn more, you should check out their [article about color blindness](#).

Dichromacy



Original Color

150.2020, -12.9176, 36.6568

Protanopia

148.1550, -8.4574, 6.0031

Deuteranopia

149.2770, -13.4476, 19.9281



Tritanopia

150.9770, -4.9187, 37.7312

Trichromacy



Original Color

150.2020, -12.9176, 36.6568

Protanomaly

148.7650, -10.2371, 16.8691

Deuteranomaly

149.7230, -13.1744, 25.6759

Tritanomaly

150.5810, -7.6814, 37.2015

Monochromacy



Original Color

150.2020, -12.9176, 36.6568

Achromatopsia

150.0000, 0.0000, 0.0000

Achromatomaly

149.9370, -4.4059, 13.2103

CSS Examples

Text

The CSS property to change the color of the text to YUV 150.2020, -12.9176, 36.6568 is called "color". The color property can be set on classes, ids or directly on the HTML element.

This example shows how text in the color `rgb(192, 134, 124)` looks like.

```
.text, #text, p{  
    color:rgb(192, 134, 124)  
}
```

If you want to add a text shadow in that color use the text-shadow property, you can generate a text shadow directly with our [CSS Text Shadow Generator](#).

Here you see how black text with a 4 pixel rgb(192, 134, 124) colored shadow looks like.

```
.shadow{ text-shadow: 4px 4px 2px rgb(192, 134, 124) }
```

Border

The CSS property to change the border of an element to YUV 150.2020, -12.9176, 36.6568 is called "border".

The border property can be set on classes, ids or directly on the HTML element.

This example shows the color as border, it can be applied via the CSS property "border" or "border-color".

```
.border, #border, table{ border:4px solid rgb(192, 134, 124) }
```


If only the border color should be changed use the property `border-color`.

```
.border{ border-color:rgb(192, 134, 124) }
```

If you want to add a box shadow in that color use:

Here you see how a box with a 4 pixel `rgb(192, 134, 124)` colored shadow looks like.

```
.boxshadow{ -moz-box-shadow:4px 4px 4px  
4px rgb(192, 134, 124); -webkit-box-  
shadow:4px 4px 4px 4px rgb(192, 134, 124);  
box-shadow:4px 4px 4px 4px rgb(192, 134,  
124) }
```

Background

The CSS property to change the background color of an element to YUV 150.2020, -12.9176, 36.6568 is called "background". The background property can be set on classes, ids or directly on the HTML element.

```
.background, #background, body{  
background: rgb(192, 134, 124) }
```

If only the background color should be changed can be used:

```
.background{ background-color: rgb(192,  
134, 124) }
```

This example shows the color as background, it is applied via the CSS property "background".

To optimize and compress your CSS code, you can use our [online CSS compressor and optimizer](#) based on csstidy. If you want to create a linear or radial gradient as background or border, check our [CSS Gradient Generator](#).

Hey! You found this booklet interesting? Support Converting Colors with the new Membership Option!

The pro membership hides all ads, plus gives you double the colors in the color bucket, and more awesome pro features!

[Learn more, Memberships starting at \\$2.50/m!](#)

**Follow me
on Twitter!**

@ConvertingColor