

Converting Colors

YUV(150.5680, -21.4790,
29.3199)

Have a look what the booklet for
YUV(150.5680, -21.4790, 29.3199)
contains.

YUV(150.5680, -21.4790, 29.3199)	3
<i>Conversions</i>	4
<i>Details</i>	6
<i>Harmonies</i>	12
<i>Previews</i>	24
<i>Color Blindness Simulation</i>	28
<i>CSS Examples</i>	31

Color

**YUV(150.5680, -21.4790,
29.3199)**

Conversions

Conversions Part 1

Format	Color
Hex	B88E6B
RGB	184, 142, 107
RGB Percent	72%, 56%, 42%
CMY	0.2784, 0.4431, 0.5804
CMYK	0.00, 0.23, 0.42, 0.28
HSL	27°, 35%, 57%
HSV	27°, 42%, 72%
XYZ	32.0940, 30.5979, 18.1244
YIQ	150.5680, 36.2670, -1.9810

Conversions

Conversions Part 2

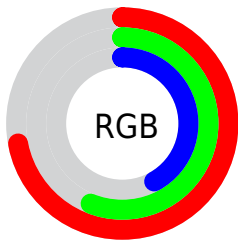
Format	Color
RYB	184, 171, 107
Decimal	12095083
CIELab	62.17, 11.25, 24.75
CIELCh	62, 27.189, 65.557
Yxy	30.5979, 0.3971, 0.3786
Android (android.graphics.Color)	4290285163 (0xFFB88E6B)
YUV	150.5680, -21.4790, 29.3199
Hunter-Lab	55.3154, 6.7639, 19.2941

Details

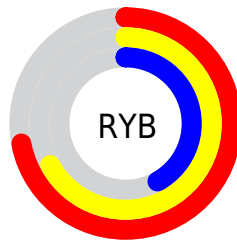
The YUV color **150.5680, -21.4790, 29.3199** is a dark color, and the websafe version is hex **CC9966**. A complement of this color would be **140.4320, 21.4790, -29.3199**, and the grayscale version is **151.0000, 0.0000, 0.0000**.

A 20% lighter version of the original color is **205.2370, -22.7948, 31.3642**, and **99.3010, -19.8684, 26.0460** is the 20% darker color. If you saturate the color by 10%, you get **142.6460, -26.4475, 36.2675**, and if you desaturate by 10%, it is **158.4900, -16.5106, 22.3723**.

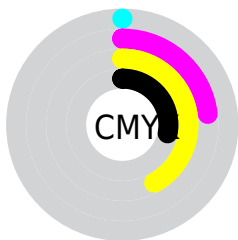
Distribution



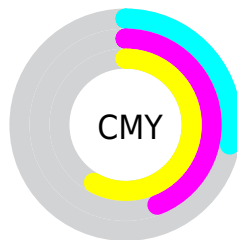
- Red (72%)
- Green (56%)
- Blue (42%)



- Red (72%)
- Yellow (67%)
- Blue (42%)



- Cyan (0%)
- Magenta (23%)
- Yellow (42%)
- Black (28%)



- Cyan (28%)
- Magenta (44%)
- Yellow (58%)

Brightness & Saturation Gradients

These gradients show how the YUV color 150.5680, -21.4790, 29.3199 changes by changing the brightness by 10 percent. The first figure shows a shift by +10% for each color and the second figure -10%.

Similar to the brightness gradients but the following saturation gradients show a change of the YUV color 150.5680, -21.4790, 29.3199 by changing the saturation by 10% instead.

■ 150.5680,
-21.4790, 29.3199

■ 150.5680,
-21.4790, 29.3199

255.0000, 0.0000,
0.0000

■ 124.1980,
-20.3106, 27.8904

■ 205.2370,
-22.7948, 31.3642

■ 99.3010, -19.8684,
26.0460

■ 228.9370,
-21.1679, 22.8573

■ 74.9310, -18.7000,
24.6165

■ 248.5650,
-17.0405, 5.6435

■ 51.8490, -17.6736,
22.0574

■ 253.5180, -5.6784,
1.2997

■ 30.5220, -15.0473,
19.7132

■ 8.6710, -4.2748,
17.8285

■ 0.0000, 0.0000,

0.0000

■ 150.5680,
-21.4790, 29.3199

■ 150.5680,
-21.4790, 29.3199

■ 142.6460,
-26.4475, 36.2675

■ 158.4900,
-16.5106, 22.3723

■ 134.6100,
-31.8527, 43.3150

■ 166.5260,
-11.1053, 15.3247

■ 126.6880,
-36.8212, 50.2626

■ 174.4480, -6.1369,
8.3771

■ 118.6520,
-42.2264, 57.3102

■ 182.4840, -0.7316,
1.3295

■ 110.7300,
-47.1949, 64.2578

■ 190.4060, 4.2368,
-5.6181

■ 104.3240,
-51.4317, 69.8759

■ 198.3280, 9.2053,
-12.5657

■ 206.3640, 14.6105,
-19.6132

■ 214.2860, 19.5790,
-26.5608

■ 220.2700, 17.1219,
-31.8088

Harmonies

Analogous

The Analogous color harmony consists of three colors that are next to each other on the color wheel.



152.1700, -14.3808, 39.3159



150.5680, -21.4790, 29.3199



148.4150, -22.8826, 12.7910

Triad

The Triadic color harmony groups three colors that are evenly spaced from another and form a triangle on the color wheel.



150.5680, -21.4790, 29.3199



138.6410, 7.5720, -48.7972



152.4410, 18.0236, 5.7522

Complementary

The Complementary color scheme is a pair of colors which are on the opposite of each other on the color wheel.



150.5680, -21.4790, 29.3199



140.4320, 21.4790, -29.3199

Split Complementary

Split-complementary colors differ from the complementary color scheme. The scheme consists of three colors, the original color and two neighbors of the complement color.



148.5840, 24.3621, -20.6832



150.5680, -21.4790, 29.3199



137.0990, 19.6712, -56.2148

Square

The Square scheme is like the rectangle color scheme, but the four colors are evenly spaced on the color wheel.



150.5680, -21.4790, 29.3199



142.2060, -6.0176, -29.9987



141.9570, 25.1642, -44.6893



154.0540, 8.3544, 27.1396

Rectangle

The Rectangle color scheme consists of four colors that form a rectangle on the color wheel.



150.5680, -21.4790, 29.3199



146.7230, -20.0764, -0.6341



141.9570, 25.1642, -44.6893



151.7820, 20.8135, -2.4398

Sweetspot

The Sweet Spot groups the original color and five complimentary colors.



150.5680, -21.4790, 29.3199



226.4870, -8.6211, 11.8509



134.8110, 6.9952, 43.1388



111.3770, -5.1159, 7.5624



247.0000, 0.0000, 0.0000



120.0000, 0.0000, 0.0000

Same Dimension

The Same Dimension uses a secret algorithm to generate beautiful new colors.



150.5680, -21.4790, 29.3199



187.5780, -33.3160, 45.9741



172.8740, -32.4759, 9.7575



88.0390, -2.4842, 3.4738



88.3210, -43.5423, 59.3545



16.0030, -7.8895, 10.5214

Inverse Universe

The Inverse Universe completely reimagines the original color for something new.



140.4320, 21.4790, -29.3199



171.8350, 33.6053, -45.4593



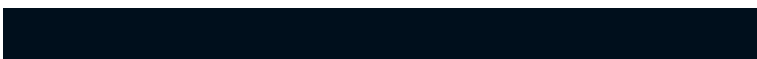
118.1260, 32.4759, -9.7575



86.9610, 2.4842, -3.4738



67.6790, 43.5423, -59.3545



11.9970, 7.8895, -10.5214

Previews

White Background



This preview shows how the YUV color 150.5680, -21.4790, 29.3199 looks on a white background.

Color Contrast Check

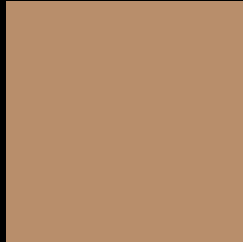
Large Text (above 18pt) WCAG AA × Fail

Any Text WCAG AA × Fail

Large Text (above 18pt) WCAG AAA × Fail

Any Text WCAG AAA × Fail

Black Background



This preview shows how the YUV color 150.5680, -21.4790, 29.3199 looks on a black background.

Color Contrast Check

Large Text (above 18pt) WCAG AA ✓ Pass

Any Text WCAG AA ✓ Pass

Large Text (above 18pt) WCAG AAA ✓ Pass

Any Text WCAG AAA ✓ Pass

If you want to check with other color combinations, try the [Color Contrast Checker](#).

YUV 150.5680, -21.4790, 29.3199

Background



This preview shows how black text looks on a background with the YUV color 150.5680, -21.4790, 29.3199.



This preview shows how white text looks on a background with the YUV color 150.5680, -21.4790, 29.3199.

Color Blindness Simulation

Color vision deficiency is a very complex topic, and I could not describe the different causes any better than Wikipedia does, so if you want to learn more, you should check out their [article about color blindness](#).

Dichromacy



Original Color

150.5680, -21.4790, 29.3199

Protanopia

149.1420, -18.8040, 11.2765

Deuteranopia

150.2470, -21.3208, 25.2164



Tritanopia

153.3890, -3.1498, 30.3538

Trichromacy



Original Color

150.5680, -21.4790, 29.3199

Protanomaly

149.6590, -19.5519, 17.8391

Deuteranomaly

150.2580, -21.3262, 26.9607

Tritanomaly

152.5540, -10.1331, 30.2091

Monochromacy



Original Color

150.5680, -21.4790, 29.3199

Achromatopsia

151.0000, 0.0000, 0.0000

Achromatomaly

151.0030, -7.8895, 10.5214

CSS Examples

Text

The CSS property to change the color of the text to YUV 150.5680, -21.4790, 29.3199 is called "color". The color property can be set on classes, ids or directly on the HTML element.

This example shows how text in the color `rgb(184, 142, 107)` looks like.

```
.text, #text, p{  
    color:rgb(184, 142, 107)  
}
```

If you want to add a text shadow in that color use the text-shadow property, you can generate a text shadow directly with our [CSS Text Shadow Generator](#).

Here you see how black text with a 4 pixel rgb(184, 142, 107) colored shadow looks like.

```
.shadow{ text-shadow: 4px 4px 2px rgb(184, 142, 107) }
```

Border

The CSS property to change the border of an element to YUV 150.5680, -21.4790, 29.3199 is called "border".

The border property can be set on classes, ids or directly on the HTML element.

This example shows the color as border, it can be applied via the CSS property "border" or "border-color".

```
.border, #border, table{ border:4px solid rgb(184, 142, 107) }
```


If only the border color should be changed use the property `border-color`.

```
.border{ border-color:rgb(184, 142, 107) }
```

If you want to add a box shadow in that color use:

Here you see how a box with a 4 pixel `rgb(184, 142, 107)` colored shadow looks like.

```
.boxshadow{ -moz-box-shadow:4px 4px 4px  
4px rgb(184, 142, 107); -webkit-box-  
shadow:4px 4px 4px 4px rgb(184, 142, 107);  
box-shadow:4px 4px 4px 4px rgb(184, 142,  
107) }
```

Background

The CSS property to change the background color of an element to YUV 150.5680, -21.4790, 29.3199 is called "background". The background property can be set on classes, ids or directly on the HTML element.

```
.background, #background, body{  
background: rgb(184, 142, 107) }
```

If only the background color should be changed can be used:

```
.background{ background-color: rgb(184,  
142, 107) }
```

This example shows the color as background, it is applied via the CSS property "background".

To optimize and compress your CSS code, you can use our [online CSS compressor and optimizer](#) based on csstidy. If you want to create a linear or radial gradient as background or border, check our [CSS Gradient Generator](#).

Hey! You found this booklet interesting? Support Converting Colors with the new Membership Option!

The pro membership hides all ads, plus gives you double the colors in the color bucket, and more awesome pro features!

[Learn more, Memberships starting at \\$2.50/m!](#)

**Follow me
on Twitter!**

@ConvertingColor