

Converting Colors

YUV(150.8400, -10.2741,
75.5623)

Have a look what the booklet for
YUV(150.8400, -10.2741, 75.5623)
contains.

YUV(150.8400, -10.2741, 75.5623)	3
<i>Conversions</i>	4
<i>Details</i>	6
<i>Harmonies</i>	12
<i>Previews</i>	24
<i>Color Blindness Simulation</i>	28
<i>CSS Examples</i>	31

Color

**YUV(150.8400, -10.2741,
75.5623)**

Conversions

Conversions Part 1

Format	Color
Hex	ED6F82
RGB	237, 111, 130
RGB Percent	93%, 44%, 51%
CMY	0.0706, 0.5647, 0.4902
CMYK	0.00, 0.53, 0.45, 0.07
HSL	351°, 78%, 68%
HSV	351°, 53%, 93%
XYZ	44.6388, 30.9851, 24.7471
YIQ	150.8400, 68.9970, 32.6210

Conversions

Conversions Part 2

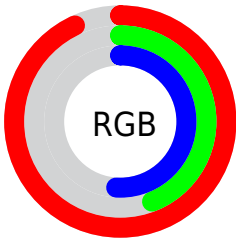
Format	Color
R_{YB}	237, 111, 130
Decimal	15560578
CIE Lab	62.50, 50.31, 13.28
CIE LCh	62, 52.035, 14.789
Yxy	30.9851, 0.4447, 0.3087
Android (android.graphics.Color)	4293750658 (0xFFED6F82)
YUV	150.8400, -10.2741, 75.5623
Hunter-Lab	55.6643, 45.7317, 12.6060

Details

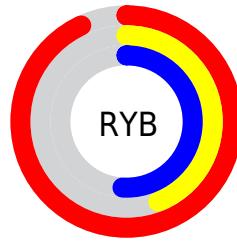
The YUV color **150.8400, -10.2741, 75.5623** is a light color, and the websafe version is hex **CC6666**. A complement of this color would be **197.1600, 10.2741, -75.5623**, and the grayscale version is **151.0000, 0.0000, 0.0000**.

A 20% lighter version of the original color is **194.5490, -5.6937, 53.0155**, and **95.6160, -7.2057, 71.3738** is the 20% darker color. If you saturate the color by 10%, you get **134.4720, -12.0647, 89.9171**, and if you desaturate by 10%, it is **167.2080, -8.4835, 61.2076**.

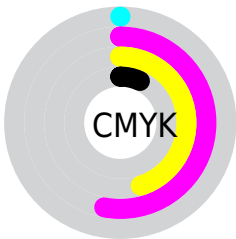
Distribution



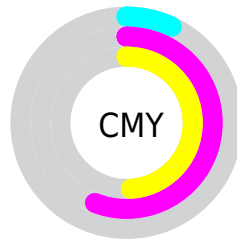
- Red (93%)
- Green (44%)
- Blue (51%)



- Red (93%)
- Yellow (44%)
- Blue (51%)



- Cyan (0%)
- Magenta (53%)
- Yellow (45%)
- Black (7%)



- Cyan (7%)
- Magenta (56%)
- Yellow (49%)

Brightness & Saturation Gradients

These gradients show how the YUV color 150.8400, -10.2741, 75.5623 changes by changing the brightness by 10 percent. The first figure shows a shift by +10% for each color and the second figure -10%.

Similar to the brightness gradients but the following saturation gradients show a change of the YUV color 150.8400, -10.2741, 75.5623 by changing the saturation by 10% instead.

150.8400,
-10.2741, 75.5623

150.8400,
-10.2741, 75.5623

255.0000, 0.0000,
0.0000

123.1710, -8.9583,
73.5180

194.5490, -5.6937,
53.0155

95.6160, -7.2057,
71.3738

214.0630, -2.0031,
35.9017

65.8270, -3.8587,
71.1887

234.3920, 2.2717,
18.0732

39.5000, -1.2325,
68.8445

253.2390, 0.8682,
1.5444

28.7340, -6.2779,
53.7303

18.9510, -8.8498,
38.6310

9.6820, -4.2802,

19.5729

■ 0.0000, 0.0000,
0.0000

■ 150.8400,
-10.2741, 75.5623

■ 150.8400,
-10.2741, 75.5623

■ 134.4720,
-12.0647, 89.9171

■ 167.2080, -8.4835,
61.2076

■ 118.6910,
-14.1447, 103.7570

■ 182.9890, -6.4036,
47.3676

■ 102.3230,
-15.9352, 118.1117

■ 199.3570, -4.6130,
33.0129

■ 85.8410, -18.1626,
132.5664

■ 215.8390, -2.3856,
18.5582

■ 74.9670, -19.2107,
142.1029

■ 231.6200, -0.3057,
4.7183

■ 247.9880, 1.4849,
-9.6365

■ 249.6180, 2.6533,
-11.0660

Harmonies

Analogous

The Analogous color harmony consists of three colors that are next to each other on the color wheel.



154.0720, 11.3035, 61.3269



150.8400, -10.2741, 75.5623



149.8070, -30.4709, 66.8213

Triad

The Triadic color harmony groups three colors that are evenly spaced from another and form a triangle on the color wheel.



150.8400, -10.2741, 75.5623



138.2880, -27.2570, -30.9476



123.0410, 57.6608, -107.9070

Complementary

The Complementary color scheme is a pair of colors which are on the opposite of each other on the color wheel.



150.8400, -10.2741, 75.5623



197.1600, 10.2741, -75.5623

Split Complementary

Split-complementary colors differ from the complementary color scheme. The scheme consists of three colors, the original color and two neighbors of the complement color.



124.8870, 44.4257, -109.5259



150.8400, -10.2741, 75.5623



115.2140, 4.8245, -101.0427

Square

The Square scheme is like the rectangle color scheme, but the four colors are evenly spaced on the color wheel.



150.8400, -10.2741, 75.5623



144.3010, -43.5324, 9.3830



121.8600, 25.2120, -106.8712



147.8380, 45.9289, -31.4299

Rectangle

The Rectangle color scheme consists of four colors that form a rectangle on the color wheel.



150.8400, -10.2741, 75.5623



148.4880, -40.1736, 52.1920



121.8600, 25.2120, -106.8712



124.1180, 54.1718, -108.8515

Sweetspot

The Sweet Spot groups the original color and five complimentary colors.



150.8400, -10.2741, 75.5623



226.9430, -3.4229, 24.6060



156.7590, 39.5588, 51.9544



110.9310, -1.9380, 14.9695



0.0000, 0.0000, 0.0000



128.0000, 0.0000, 0.0000

Same Dimension

The Same Dimension uses a secret algorithm to generate beautiful new colors.



150.8400, -10.2741, 75.5623



143.4730, -13.5442, 97.8092



173.3280, -30.7277, 55.8403



109.4030, -1.1847, 6.6626



57.1970, -14.8871, 108.5752



17.0580, -4.4656, 32.3981

Inverse Universe

The Inverse Universe completely reimagines the original color for something new.



150.8400, -10.2741, 75.5623



143.4730, -13.5442, 97.8092



174.6720, 30.7277, -55.8403



109.4030, -1.1847, 6.6626



57.1970, -14.8871, 108.5752



17.0580, -4.4656, 32.3981

Previews

White Background



This preview shows how the YUV color 150.8400, -10.2741, 75.5623 looks on a white background.

Color Contrast Check

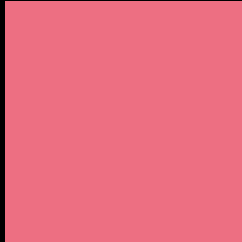
Large Text (above 18pt) WCAG AA × Fail

Any Text WCAG AA × Fail

Large Text (above 18pt) WCAG AAA × Fail

Any Text WCAG AAA × Fail

Black Background



This preview shows how the YUV color 150.8400, -10.2741, 75.5623 looks on a black background.

Color Contrast Check

Large Text (above 18pt) WCAG AA ✓ Pass

Any Text WCAG AA ✓ Pass

Large Text (above 18pt) WCAG AAA ✓ Pass

Any Text WCAG AAA ✓ Pass

If you want to check with other color combinations, try the [Color Contrast Checker](#).

YUV 150.8400, -10.2741, 75.5623

Background



This preview shows how black text looks on a background with the YUV color 150.8400, -10.2741, 75.5623.



This preview shows how white text looks on a background with the YUV color 150.8400, -10.2741, 75.5623.

75.5623.

Color Blindness Simulation

Color vision deficiency is a very complex topic, and I could not describe the different causes any better than Wikipedia does, so if you want to learn more, you should check out their [article about color blindness](#).

Dichromacy



Original Color

150.8400, -10.2741, 75.5623

Protanopia

151.8970, -0.4422, 1.8443

Deuteranopia

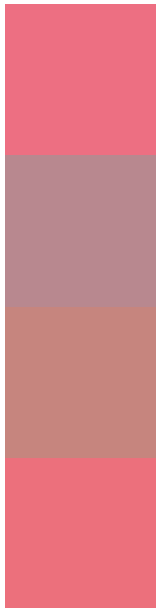
152.4620, -14.0318, 20.6428



Tritanopia

150.5750, -15.0735, 74.9177

Trichromacy



Original Color

150.8400, -10.2741, 75.5623

Protanomaly

151.1500, -4.0179, 28.8095

Deuteranomaly

151.6370, -12.6390, 40.6604

Tritanomaly

150.4440, -13.0369, 75.0326

Monochromacy



Original Color

150.8400, -10.2741, 75.5623

Achromatopsia

151.0000, 0.0000, 0.0000

Achromatomaly

150.5520, -3.7231, 27.5799

CSS Examples

Text

The CSS property to change the color of the text to YUV 150.8400, -10.2741, 75.5623 is called "color". The color property can be set on classes, ids or directly on the HTML element.

This example shows how text in the color `rgb(237, 111, 130)` looks like.

```
.text, #text, p{  
    color:rgb(237, 111, 130)  
}
```

If you want to add a text shadow in that color use the text-shadow property, you can generate a text shadow directly with our [CSS Text Shadow Generator](#).

Here you see how black text with a 4 pixel rgb(237, 111, 130) colored shadow looks like.

```
.shadow{ text-shadow: 4px 4px 2px rgb(237, 111, 130) }
```

Border

The CSS property to change the border of an element to YUV 150.8400, -10.2741, 75.5623 is called "border".

The border property can be set on classes, ids or directly on the HTML element.

This example shows the color as border, it can be applied via the CSS property "border" or "border-color".

```
.border, #border, table{ border:4px solid rgb(237, 111, 130) }
```


If only the border color should be changed use the property `border-color`.

```
.border{ border-color:rgb(237, 111, 130) }
```

If you want to add a box shadow in that color use:

Here you see how a box with a 4 pixel `rgb(237, 111, 130)` colored shadow looks like.

```
.boxshadow{ -moz-box-shadow:4px 4px 4px  
4px rgb(237, 111, 130); -webkit-box-  
shadow:4px 4px 4px 4px rgb(237, 111, 130);  
box-shadow:4px 4px 4px 4px rgb(237, 111,  
130) }
```

Background

The CSS property to change the background color of an element to YUV 150.8400, -10.2741, 75.5623 is called "background". The background property can be set on classes, ids or directly on the HTML element.

```
.background, #background, body{  
background: rgb(237, 111, 130) }
```

If only the background color should be changed can be used:

```
.background{ background-color: rgb(237,  
111, 130) }
```

This example shows the color as background, it is applied via the CSS property "background".

To optimize and compress your CSS code, you can use our [online CSS compressor and optimizer](#) based on csstidy. If you want to create a linear or radial gradient as background or border, check our [CSS Gradient Generator](#).

Hey! You found this booklet interesting? Support Converting Colors with the new Membership Option!

The pro membership hides all ads, plus gives you double the colors in the color bucket, and more awesome pro features!

[Learn more, Memberships starting at \\$2.50/m!](#)

**Follow me
on Twitter!**

@ConvertingColor