

Converting Colors

YUV(150.8960, -12.2737,
16.7542)

Have a look what the booklet for
YUV(150.8960, -12.2737, 16.7542)
contains.

YUV(150.8960, -12.2737, 16.7542)	3
<i>Conversions</i>	4
<i>Details</i>	6
<i>Harmonies</i>	12
<i>Previews</i>	24
<i>Color Blindness Simulation</i>	28
<i>CSS Examples</i>	31

Color

**YUV(150.8960, -12.2737,
16.7542)**

Conversions

Conversions Part 1

Format	Color
Hex	AA927E
RGB	170, 146, 126
RGB Percent	67%, 57%, 49%
CMY	0.3333, 0.4275, 0.5059
CMYK	0.00, 0.14, 0.26, 0.33
HSL	27°, 21%, 58%
HSV	27°, 26%, 67%
XYZ	30.6223, 30.6102, 24.0330
YIQ	150.8960, 20.7240, -1.1320

Conversions

Conversions Part 2

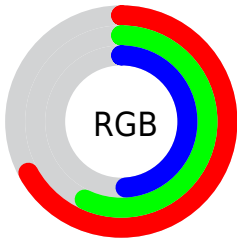
Format	Color
RYB	170, 163, 126
Decimal	11178622
CIELab	62.18, 5.80, 13.92
CIELCh	62, 15.080, 67.380
Yxy	30.6102, 0.3591, 0.3590
Android (android.graphics.Color)	4289368702 (0xFFAA927E)
YUV	150.8960, -12.2737, 16.7542
Hunter-Lab	55.3265, 1.9757, 12.9738

Details

The YUV color $150.8960, -12.2737, 16.7542$ is a dark color, and the websafe version is hex 999999 . A complement of this color would be $145.1040, 12.2737, -16.7542$, and the grayscale version is $151.0000, 0.0000, 0.0000$.

A 20% lighter version of the original color is $205.3800, -13.0053, 18.0837$, and $100.1130, -11.3947, 14.8099$ is the 20% darker color. If you saturate the color by 10%, you get $143.6750, -17.0948, 23.0870$, and if you desaturate by 10%, it is $158.1170, -7.4527, 10.4214$.

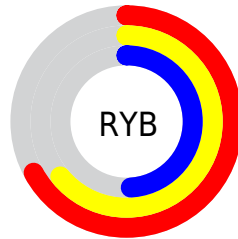
Distribution



Red (67%)

Green (57%)

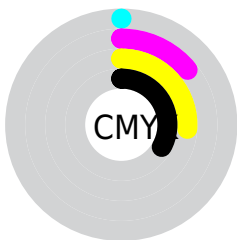
Blue (49%)



Red (67%)

Yellow (64%)

Blue (49%)

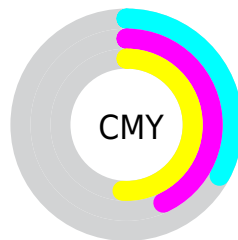


Cyan (0%)

Magenta (14%)

Yellow (26%)

Black (33%)



Cyan (33%)

Magenta (43%)

Yellow (51%)

Brightness & Saturation Gradients

These gradients show how the YUV color 150.8960, -12.2737, 16.7542 changes by changing the brightness by 10 percent. The first figure shows a shift by +10% for each color and the second figure -10%.

Similar to the brightness gradients but the following saturation gradients show a change of the YUV color 150.8960, -12.2737, 16.7542 by changing the saturation by 10% instead.

■ 150.8960,
-12.2737, 16.7542

■ 150.8960,
-12.2737, 16.7542

■ 255.0000, 0.0000,
0.0000

■ 124.7110,
-11.6895, 16.0395

■ 205.3800,
-13.0053, 18.0837

■ 100.1130,
-11.3947, 14.8099

■ 233.5650,
-13.5895, 18.7985

■ 75.9280, -10.8105,
14.0951

■ 252.6060, -9.1728,
2.0995

■ 52.8570, -9.7895,
13.2804

■ 31.0310, -10.3683,
12.2508

■ 8.6380, -4.2585,
12.5955

■ 0.0000, 0.0000,

0.0000

■ 150.8960,
-12.2737, 16.7542

■ 150.8960,
-12.2737, 16.7542

■ 143.6750,
-17.0948, 23.0870

■ 158.1170, -7.4527,
10.4214

■ 135.8670,
-21.6264, 29.9346

■ 165.9250, -2.9210,
3.5738

■ 128.6460,
-26.4475, 36.2675

■ 173.1460, 1.9000,
-2.7590

■ 121.4250,
-31.2685, 42.6003

■ 180.3670, 6.7211,
-9.0919

■ 114.2040,
-36.0896, 48.9331

■ 187.5880, 11.5421,
-15.4247

■ 106.3960,
-40.6212, 55.7807

■ 195.3960, 16.0738,
-22.2723

■ 99.1750, -45.4423,
62.1135

■ 202.6170, 20.8948,
-28.6051

■ 96.0290, -47.3423,
64.8726

■ 209.0400, 22.6583,
-34.2381

■ 214.3230, 20.0538,
-38.8713

Harmonies

Analogous

The Analogous color harmony consists of three colors that are next to each other on the color wheel.



151.6670, -8.2168, 22.2170



150.8960, -12.2737, 16.7542



149.1290, -12.3886, 6.9029

Triad

The Triadic color harmony groups three colors that are evenly spaced from another and form a triangle on the color wheel.



150.8960, -12.2737, 16.7542



145.1710, 3.8597, -24.7060



152.2530, 9.7353, 4.1631

Complementary

The Complementary color scheme is a pair of colors which are on the opposite of each other on the color wheel.



150.8960, -12.2737, 16.7542



145.1040, 12.2737, -16.7542

Split Complementary

Split-complementary colors differ from the complementary color scheme. The scheme consists of three colors, the original color and two neighbors of the complement color.



150.0880, 13.2676, -8.8472



150.8960, -12.2737, 16.7542



145.4680, 10.1223, -26.7204

Square

The Square scheme is like the rectangle color scheme, but the four colors are evenly spaced on the color wheel.



150.8960, -12.2737, 16.7542



146.3910, -3.1508, -16.1289



147.4240, 13.5950, -20.5428



152.8370, 4.0244, 15.9290

Rectangle

The Rectangle color scheme consists of four colors that form a rectangle on the color wheel.



150.8960, -12.2737, 16.7542



148.1280, -10.9091, -0.9893



147.4240, 13.5950, -20.5428



151.2740, 11.2039, -0.2403

Sweetspot

The Sweet Spot groups the original color and five complimentary colors.



150.8960, -12.2737, 16.7542



214.0780, -4.9685, 6.9476



141.8920, 3.9972, 24.6507



107.2240, -3.0684, 4.1886



240.0000, 0.0000, 0.0000



112.0000, 0.0000, 0.0000

Same Dimension

The Same Dimension uses a secret algorithm to generate beautiful new colors.



150.8960, -12.2737, 16.7542



191.8280, -19.1422, 26.4608



163.8100, -18.6403, 5.4286



80.7400, -2.3368, 2.8590



83.5810, -41.2054, 56.4955



11.2630, -5.5527, 7.6623

Inverse Universe

The Inverse Universe completely reimagines the original color for something new.



145.1040, 12.2737, -16.7542



183.1720, 19.1422, -26.4608



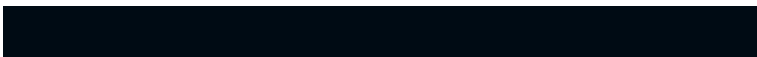
132.1900, 18.6403, -5.4286



79.2600, 2.3368, -2.8590



64.4190, 41.2054, -56.4955



8.7370, 5.5527, -7.6623

Previews

White Background



This preview shows how the YUV color 150.8960, -12.2737, 16.7542 looks on a white background.

Color Contrast Check

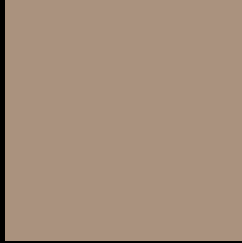
Large Text (above 18pt) WCAG AA × Fail

Any Text WCAG AA × Fail

Large Text (above 18pt) WCAG AAA × Fail

Any Text WCAG AAA × Fail

Black Background



This preview shows how the YUV color 150.8960, -12.2737, 16.7542 looks on a black background.

Color Contrast Check

Large Text (above 18pt) WCAG AA ✓ Pass

Any Text WCAG AA ✓ Pass

Large Text (above 18pt) WCAG AAA ✓ Pass

Any Text WCAG AAA ✓ Pass

If you want to check with other color combinations, try the [Color Contrast Checker](#).

YUV 150.8960, -12.2737, 16.7542 Background



This preview shows how black text looks on a background with the YUV color 150.8960, -12.2737, 16.7542.



This preview shows how white text looks on a background with the YUV color 150.8960, -12.2737, 16.7542.

Color Blindness Simulation

Color vision deficiency is a very complex topic, and I could not describe the different causes any better than Wikipedia does, so if you want to learn more, you should check out their [article about color blindness](#).

Dichromacy



Original Color

150.8960, -12.2737, 16.7542

Protanopia

149.8840, -10.7888, 7.1177

Deuteranopia

151.2060, -12.4266, 19.1133



Tritanopia

152.5230, 0.2352, 17.9583

Trichromacy



Original Color

150.8960, -12.2737, 16.7542

Protanomaly

150.3790, -11.5258, 10.1916

Deuteranomaly

150.9070, -12.2792, 18.4986

Tritanomaly

151.6710, -4.2748, 17.8285

Monochromacy



Original Color

150.8960, -12.2737, 16.7542

Achromatopsia

151.0000, 0.0000, 0.0000

Achromatomaly

150.8930, -4.3842, 6.2328

CSS Examples

Text

The CSS property to change the color of the text to YUV 150.8960, -12.2737, 16.7542 is called "color". The color property can be set on classes, ids or directly on the HTML element.

This example shows how text in the color `rgb(170, 146, 126)` looks like.

```
.text, #text, p{  
    color:rgb(170, 146, 126)  
}
```

If you want to add a text shadow in that color use the text-shadow property, you can generate a text shadow directly with our [CSS Text Shadow Generator](#).

Here you see how black text with a 4 pixel rgb(170, 146, 126) colored shadow looks like.

```
.shadow{ text-shadow: 4px 4px 2px rgb(170, 146, 126) }
```

Border

The CSS property to change the border of an element to YUV 150.8960, -12.2737, 16.7542 is called "border".

The border property can be set on classes, ids or directly on the HTML element.

This example shows the color as border, it can be applied via the CSS property "border" or "border-color".

```
.border, #border, table{ border:4px solid rgb(170, 146, 126) }
```


If only the border color should be changed use the property `border-color`.

```
.border{ border-color:rgb(170, 146, 126) }
```

If you want to add a box shadow in that color use:

Here you see how a box with a 4 pixel `rgb(170, 146, 126)` colored shadow looks like.

```
.boxshadow{ -moz-box-shadow:4px 4px 4px  
4px rgb(170, 146, 126); -webkit-box-  
shadow:4px 4px 4px 4px rgb(170, 146, 126);  
box-shadow:4px 4px 4px 4px rgb(170, 146,  
126) }
```

Background

The CSS property to change the background color of an element to YUV 150.8960, -12.2737, 16.7542 is called "background". The background property can be set on classes, ids or directly on the HTML element.

```
.background, #background, body{  
background: rgb(170, 146, 126) }
```

If only the background color should be changed can be used:

```
.background{ background-color: rgb(170,  
146, 126) }
```

This example shows the color as background, it is applied via the CSS property "background".

To optimize and compress your CSS code, you can use our [online CSS compressor and optimizer](#) based on csstidy. If you want to create a linear or radial gradient as background or border, check our [CSS Gradient Generator](#).

Hey! You found this booklet interesting? Support Converting Colors with the new Membership Option!

The pro membership hides all ads, plus gives you double the colors in the color bucket, and more awesome pro features!

[Learn more, Memberships starting at \\$2.50/m!](#)

**Follow me
on Twitter!**

@ConvertingColor