

Converting Colors

YUV(151.1170, -4.0017,
23.5764)

Have a look what the booklet for
YUV(151.1170, -4.0017, 23.5764)
contains.

YUV(151.1170, -4.0017, 23.5764)	3
<i>Conversions</i>	4
<i>Details</i>	6
<i>Harmonies</i>	12
<i>Previews</i>	24
<i>Color Blindness Simulation</i>	28
<i>CSS Examples</i>	31

Color

**YUV(151.1170, -4.0017,
23.5764)**

Conversions

Conversions Part 1

Format	Color
Hex	B28B8F
RGB	178, 139, 143
RGB Percent	70%, 55%, 56%
CMY	0.3020, 0.4549, 0.4392
CMYK	0.00, 0.22, 0.20, 0.30
HSL	354°, 20%, 62%
HSV	354°, 22%, 70%
XYZ	32.5506, 29.9134, 30.0449
YIQ	151.1170, 21.9600, 9.5120

Conversions

Conversions Part 2

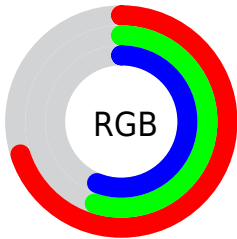
Format	Color
RYB	178, 139, 143
Decimal	11701135
CIELab	61.58, 15.43, 3.55
CIELCh	62, 15.829, 12.964
Yxy	29.9134, 0.3519, 0.3234
Android (android.graphics.Color)	4289891215 (0xFFB28B8F)
YUV	151.1170, -4.0017, 23.5764
Hunter-Lab	54.6931, 10.5214, 5.7151

Details

The YUV color $151.1170, -4.0017, 23.5764$ is a light color, and the websafe version is hex $CC9999$. A complement of this color would be $165.8830, 4.0017, -23.5764$, and the grayscale version is $151.0000, 0.0000, 0.0000$.

A 20% lighter version of the original color is $205.7150, -4.2965, 24.8059$, and $100.2200, -3.5595, 21.7321$ is the 20% darker color. If you saturate the color by 10%, you get $138.7270, -5.7814, 34.4424$, and if you desaturate by 10%, it is $163.5070, -2.2220, 12.7104$.

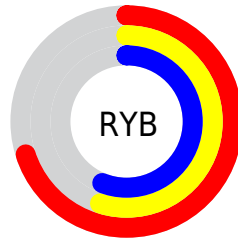
Distribution



Red (70%)

Green (55%)

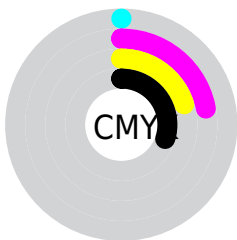
Blue (56%)



Red (70%)

Yellow (55%)

Blue (56%)

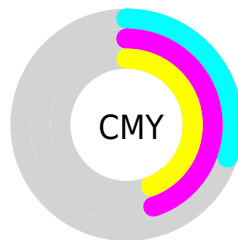


Cyan (0%)

Magenta (22%)

Yellow (20%)

Black (30%)



Cyan (30%)

Magenta (45%)

Yellow (44%)

Brightness & Saturation Gradients

These gradients show how the YUV color 151.1170, -4.0017, 23.5764 changes by changing the brightness by 10 percent. The first figure shows a shift by +10% for each color and the second figure -10%.

Similar to the brightness gradients but the following saturation gradients show a change of the YUV color 151.1170, -4.0017, 23.5764 by changing the saturation by 10% instead.

■ 151.1170, -4.0017,
23.5764

■ 151.1170, -4.0017,
23.5764

255.0000, 0.0000,
0.0000

■ 124.8180, -3.8543,
22.9616

■ 205.7150, -4.2965,
24.8059

■ 100.2200, -3.5595,
21.7321

■ 231.6220, -3.2646,
20.5025

■ 75.6220, -3.2646,
20.5025

■ 251.2500, 0.8628,
3.2888

■ 53.0240, -2.9698,
19.2730

■ 31.1270, -2.5276,
17.4286

■ 9.8670, -4.8644,
20.2876

■ 0.0000, 0.0000,

0.0000

151.1170, -4.0017,
23.5764

151.1170, -4.0017,
23.5764

138.7270, -5.7814,
34.4424

163.5070, -2.2220,
12.7104

126.3370, -7.5611,
45.3085

175.8970, -0.4422,
1.8443

114.5340, -9.6303,
55.6597

187.7000, 1.6269,
-8.5069

102.1440,
-11.4100, 66.5257

200.0900, 3.4066,
-19.3729

89.7540, -13.1897,
77.3917

212.4800, 5.1864,
-30.2390

77.3640, -14.9695,
88.2578

224.8700, 6.9661,
-41.1050

■ 64.9740, -16.7492,
99.1238

■ 231.9770, 11.3503,
-47.3378

■ 55.2740, -18.3761,
107.6307

Harmonies

Analogous

The Analogous color harmony consists of three colors that are next to each other on the color wheel.



151.5060, 2.7085, 17.9732



151.1170, -4.0017, 23.5764



150.2110, -9.9640, 22.6170

Triad

The Triadic color harmony groups three colors that are evenly spaced from another and form a triangle on the color wheel.



151.1170, -4.0017, 23.5764



145.9530, -8.8508, -7.8518



145.9510, 14.3212, -20.1280

Complementary

The Complementary color scheme is a pair of colors which are on the opposite of each other on the color wheel.



151.1170, -4.0017, 23.5764



165.8830, 4.0017, -23.5764

Split Complementary

Split-complementary colors differ from the complementary color scheme. The scheme consists of three colors, the original color and two neighbors of the complement color.



144.3970, 11.1433, -27.5352



151.1170, -4.0017, 23.5764



144.0100, -1.9769, -19.3028

Square

The Square scheme is like the rectangle color scheme, but the four colors are evenly spaced on the color wheel.



151.1170, -4.0017, 23.5764



147.5910, -13.1094, 4.7437



143.5020, 5.1755, -26.7503



149.0990, 13.2622, -7.1028

Rectangle

The Rectangle color scheme consists of four colors that form a rectangle on the color wheel.



151.1170, -4.0017, 23.5764



149.7930, -12.7159, 18.5985



143.5020, 5.1755, -26.7503



145.7010, 13.4584, -23.4168

Sweetspot

The Sweet Spot groups the original color and five complimentary colors.



151.1170, -4.0017, 23.5764



220.8980, -1.9217, 9.7365



153.6120, 12.0233, 17.0033



110.8050, -0.8899, 5.4330



245.0000, 0.0000, 0.0000



117.0000, 0.0000, 0.0000

Same Dimension

The Same Dimension uses a secret algorithm to generate beautiful new colors.



151.1170, -4.0017, 23.5764



190.6240, -6.2236, 36.2868



159.4660, -10.0897, 16.2543



82.8050, -0.8899, 5.4330



47.5710, -15.5645, 92.4612



8.1160, -2.5222, 15.6843

Inverse Universe

The Inverse Universe completely reimagines the original color for something new.



151.1170, -4.0017, 23.5764



190.6240, -6.2236, 36.2868



157.5340, 10.0897, -16.2543



82.8050, -0.8899, 5.4330



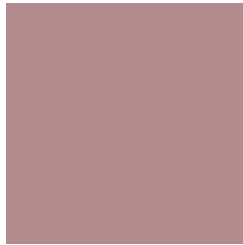
47.5710, -15.5645, 92.4612



8.1160, -2.5222, 15.6843

Previews

White Background



This preview shows how the YUV color 151.1170, -4.0017, 23.5764 looks on a white background.

Color Contrast Check

Large Text (above 18pt) WCAG AA ✓ Pass

Any Text WCAG AA × Fail

Large Text (above 18pt) WCAG AAA × Fail

Any Text WCAG AAA × Fail

Black Background



This preview shows how the YUV color 151.1170, -4.0017, 23.5764 looks on a black background.

Color Contrast Check

Large Text (above 18pt) WCAG AA ✓ Pass

Any Text WCAG AA ✓ Pass

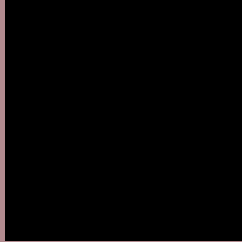
Large Text (above 18pt) WCAG AAA ✓ Pass

Any Text WCAG AAA × Fail

If you want to check with other color combinations, try the [Color Contrast Checker](#).

YUV 151.1170, -4.0017, 23.5764

Background



This preview shows how black text looks on a background with the YUV color 151.1170, -4.0017, 23.5764.



This preview shows how white text looks on a background with the YUV color 151.1170, -4.0017,

Color Blindness Simulation

Color vision deficiency is a very complex topic, and I could not describe the different causes any better than Wikipedia does, so if you want to learn more, you should check out their [article about color blindness](#).

Dichromacy



Original Color

151.1170, -4.0017, 23.5764

Protanopia

149.1960, -0.5896, 2.4591

Deuteranopia

150.3500, -4.1165, 13.7251



Tritanopia

151.5130, -1.2389, 24.1061

Trichromacy



Original Color

151.1170, -4.0017, 23.5764

Protanomaly

149.8980, -1.9217, 9.7365

Deuteranomaly

150.3720, -4.1274, 17.2138

Tritanomaly

151.2850, -2.1125, 24.3061

Monochromacy



Original Color

151.1170, -4.0017, 23.5764

Achromatopsia

151.0000, 0.0000, 0.0000

Achromatomaly

151.3000, -1.6269, 8.5069

CSS Examples

Text

The CSS property to change the color of the text to YUV 151.1170, -4.0017, 23.5764 is called "color". The color property can be set on classes, ids or directly on the HTML element.

This example shows how text in the color `rgb(178, 139, 143)` looks like.

```
.text, #text, p{  
    color:rgb(178, 139, 143)  
}
```

If you want to add a text shadow in that color use the text-shadow property, you can generate a text shadow directly with our [CSS Text Shadow Generator](#).

Here you see how black text with a 4 pixel rgb(178, 139, 143) colored shadow looks like.

```
.shadow{ text-shadow: 4px 4px 2px rgb(178, 139, 143) }
```

Border

The CSS property to change the border of an element to YUV 151.1170, -4.0017, 23.5764 is called "border". The border property can be set on classes, ids or directly on the HTML element.

This example shows the color as border, it can be applied via the CSS property "border" or "border-color".

```
.border, #border, table{ border:4px solid rgb(178, 139, 143) }
```


If only the border color should be changed use the property `border-color`.

```
.border{ border-color:rgb(178, 139, 143) }
```

If you want to add a box shadow in that color use:

Here you see how a box with a 4 pixel `rgb(178, 139, 143)` colored shadow looks like.

```
.boxshadow{ -moz-box-shadow:4px 4px 4px  
4px rgb(178, 139, 143); -webkit-box-  
shadow:4px 4px 4px 4px rgb(178, 139, 143);  
box-shadow:4px 4px 4px 4px rgb(178, 139,  
143) }
```

Background

The CSS property to change the background color of an element to YUV 151.1170, -4.0017, 23.5764 is called "background". The background property can be set on classes, ids or directly on the HTML element.

```
.background, #background, body{  
background: rgb(178, 139, 143) }
```

If only the background color should be changed can be used:

```
.background{ background-color: rgb(178,  
139, 143) }
```

This example shows the color as background, it is applied via the CSS property "background".

To optimize and compress your CSS code, you can use our [online CSS compressor and optimizer](#) based on csstidy. If you want to create a linear or radial gradient as background or border, check our [CSS Gradient Generator](#).

Hey! You found this booklet interesting? Support Converting Colors with the new Membership Option!

The pro membership hides all ads, plus gives you double the colors in the color bucket, and more awesome pro features!

[Learn more, Memberships starting at \\$2.50/m!](#)

**Follow me
on Twitter!**

@ConvertingColor