

Converting Colors

YUV(151.1350, -7.9546,
31.4536)

Have a look what the booklet for
YUV(151.1350, -7.9546, 31.4536)
contains.

YUV(151.1350, -7.9546, 31.4536)	3
<i>Conversions</i>	4
<i>Details</i>	6
<i>Harmonies</i>	12
<i>Previews</i>	24
<i>Color Blindness Simulation</i>	28
<i>CSS Examples</i>	31

Color

**YUV(151.1350, -7.9546,
31.4536)**

Conversions

Conversions Part 1	
Format	Color
Hex	BB8887
RGB	187, 136, 135
RGB Percent	73%, 53%, 53%
CMY	0.2667, 0.4667, 0.4706
CMYK	0.00, 0.27, 0.28, 0.27
HSL	1°, 28%, 63%
HSV	1°, 28%, 73%
XYZ	33.6709, 29.9224, 26.9226
YIQ	151.1350, 30.7170, 10.5010

Conversions

Conversions Part 2

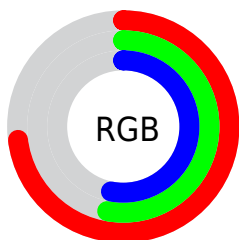
Format	Color
RYB	187, 136, 135
Decimal	12290183
CIELab	61.59, 19.36, 8.24
CIELCh	62, 21.040, 23.058
Yxy	29.9224, 0.3720, 0.3306
Android (android.graphics.Color)	4290480263 (0xFFBB8887)
YUV	151.1350, -7.9546, 31.4536
Hunter-Lab	54.7014, 14.1464, 9.1099

Details

The YUV color **151.1350, -7.9546, 31.4536** is a light color, and the websafe version is hex **CC9999**. A complement of this color would be **170.8650, 7.9546, -31.4536**, and the grayscale version is **151.0000, 0.0000, 0.0000**.

A 20% lighter version of the original color is **205.9180, -8.8336, 33.3979**, and **99.9390, -7.3649, 28.9945** is the 20% darker color. If you saturate the color by 10%, you get **138.4030, -11.0447, 42.6196**, and if you desaturate by 10%, it is **163.8670, -4.8644, 20.2876**.

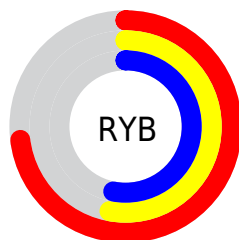
Distribution



Red (73%)

Green (53%)

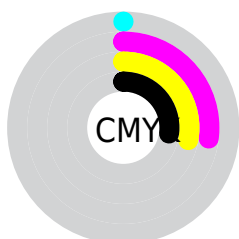
Blue (53%)



Red (73%)

Yellow (53%)

Blue (53%)

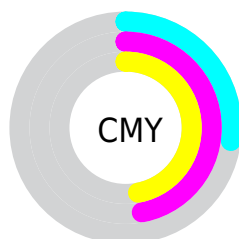


Cyan (0%)

Magenta (27%)

Yellow (28%)

Black (27%)



Cyan (27%)

Magenta (47%)


Yellow (47%)


Brightness & Saturation

Gradients


These gradients show how the YUV color 151.1350, -7.9546, 31.4536 changes by changing the brightness by 10 percent. The first figure shows a shift by +10% for each color and the second figure -10%.

Similar to the brightness gradients but the following saturation gradients show a change of the YUV color 151.1350, -7.9546, 31.4536 by changing the saturation by 10% instead.


 151.1350, -7.9546,
31.4536

 151.1350, -7.9546,
31.4536


255.0000, 0.0000,
0.0000

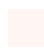
 124.6510, -7.2229,
30.1241


 205.9180, -8.8336,
33.3979


 99.9390, -7.3649,
28.9945


 228.2480, -6.0383,
23.4615

 75.1560, -6.4859,
27.0502

 248.4630, -2.2003,
5.7329

 52.2590, -6.0437,
25.2059

 29.8890, -4.8753,
23.7763

 10.7640, -5.3067,
22.1320

 0.0000, 0.0000,

0.0000

151.1350, -7.9546,
31.4536

151.1350, -7.9546,
31.4536

138.4030,
-11.0447, 42.6196

163.8670, -4.8644,
20.2876

125.1980,
-13.4086, 54.2004

177.0720, -2.5005,
8.7069

112.4660,
-16.4987, 65.3663

189.8040, 0.5896,
-2.4591

99.7340, -19.5889,
76.5323

202.5360, 3.6798,
-13.6251

86.5290, -21.9528,
88.1131

215.7410, 6.0437,
-25.2059

73.7970, -25.0429,
99.2790

228.4730, 9.1338,
-36.3718

■ 61.0650, -28.1330,
110.4450

■ 234.6680, 10.0237,
-41.8048

■ 58.2610, -28.7227,
112.9041

Harmonies

Analogous

The Analogous color harmony consists of three colors that are next to each other on the color wheel.



152.1050, 0.9342, 27.0949



151.1350, -7.9546, 31.4536



149.9790, -14.7796, 27.2054

Triad

The Triadic color harmony groups three colors that are evenly spaced from another and form a triangle on the color wheel.



151.1350, -7.9546, 31.4536



144.1970, -8.9711, -15.9588



146.4930, 18.9840, -22.3574

Complementary

The Complementary color scheme is a pair of colors which are on the opposite of each other on the color wheel.



151.1350, -7.9546, 31.4536



170.8650, 7.9546, -31.4536

Split Complementary

Split-complementary colors differ from the complementary color scheme. The scheme consists of three colors, the original color and two neighbors of the complement color.



142.6500, 17.4276, -36.5270



151.1350, -7.9546, 31.4536



141.7420, 1.1132, -30.4687

Square

The Square scheme is like the rectangle color scheme, but the four colors are evenly spaced on the color wheel.



151.1350, -7.9546, 31.4536



146.1730, -15.8613, 0.7253



140.6190, 11.0338, -39.1309



149.6310, 16.4509, -3.1844

Rectangle

The Rectangle color scheme consists of four colors that form a rectangle on the color wheel.



151.1350, -7.9546, 31.4536



148.9520, -17.2313, 20.2131



140.6190, 11.0338, -39.1309



145.1610, 19.1476, -28.2052

Sweetspot

The Sweet Spot groups the original color and five complimentary colors.



151.1350, -7.9546, 31.4536



228.6810, -2.8007, 11.6808



156.3620, 14.6115, 26.8695



113.5880, -1.7689, 7.3773



250.0000, 0.0000, 0.0000



122.0000, 0.0000, 0.0000

Same Dimension

The Same Dimension uses a secret algorithm to generate beautiful new colors.



151.1350, -7.9546, 31.4536



187.0940, -12.3713, 48.1526



166.3970, -15.4787, 18.0688



87.6910, -1.3267, 5.5330



49.0030, -24.1585, 95.5904



9.8560, -4.8590, 18.5433

Inverse Universe

The Inverse Universe completely reimagines the original color for something new.



170.8650, 7.9546, -31.4536



217.4930, 12.0820, -48.6674



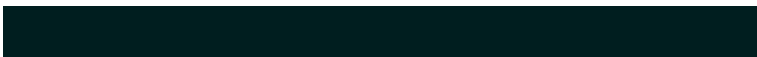
155.6030, 15.4787, -18.0688



91.3090, 1.3267, -5.5330



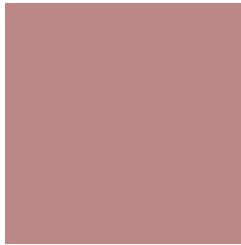
108.9970, 24.1585, -95.5904



21.1440, 4.8590, -18.5433

Previews

White Background



This preview shows how the YUV color 151.1350, -7.9546, 31.4536 looks on a white background.

Color Contrast Check

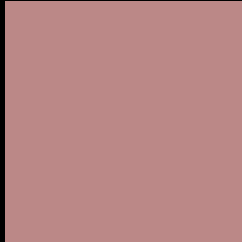
Large Text (above 18pt) WCAG AA ✓ Pass

Any Text WCAG AA ✗ Fail

Large Text (above 18pt) WCAG AAA ✗ Fail

Any Text WCAG AAA ✗ Fail

Black Background



This preview shows how the YUV color 151.1350, -7.9546, 31.4536 looks on a black background.

Color Contrast Check

Large Text (above 18pt) WCAG AA ✓ Pass

Any Text WCAG AA ✓ Pass

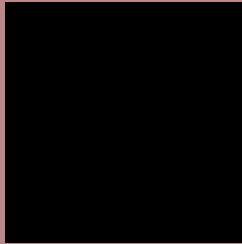
Large Text (above 18pt) WCAG AAA ✓ Pass

Any Text WCAG AAA × Fail

If you want to check with other color combinations, try the [Color Contrast Checker](#).

YUV 151.1350, -7.9546, 31.4536

Background



This preview shows how black text looks on a background with the YUV color 151.1350, -7.9546, 31.4536.



This preview shows how white text looks on a background with the YUV color 151.1350, -7.9546,

31.4536.

Color Blindness Simulation

Color vision deficiency is a very complex topic, and I could not describe the different causes any better than Wikipedia does, so if you want to learn more, you should check out their [article about color blindness](#).

Dichromacy



Original Color

151.1350, -7.9546, 31.4536

Protanopia

148.8110, -3.3578, 3.6738

Deuteranopia

150.3350, -8.0532, 16.3692



Tritanopia

151.4000, -3.1552, 32.0982

Trichromacy



Original Color
151.1350, -7.9546, 31.4536

Protanomaly
149.7090, -5.2795, 13.4102

Deuteranomaly
150.6670, -8.2168, 22.2170

Tritanomaly
151.5310, -5.1918, 31.9833

Monochromacy



Original Color
151.1350, -7.9546, 31.4536

Achromatopsia
151.0000, 0.0000, 0.0000

Achromatomaly
151.2680, -3.0901, 11.1660

CSS Examples

Text

The CSS property to change the color of the text to YUV 151.1350, -7.9546, 31.4536 is called "color". The color property can be set on classes, ids or directly on the HTML element.

This example shows how text in the color `rgb(187, 136, 135)` looks like.

```
.text, #text, p{  
    color:rgb(187, 136, 135)  
}
```

If you want to add a text shadow in that color use the text-shadow property, you can generate a text shadow directly with our [CSS Text Shadow Generator](#).

Here you see how black text with a 4 pixel rgb(187, 136, 135) colored shadow looks like.

```
.shadow{ text-shadow: 4px 4px 2px rgb(187, 136, 135) }
```

Border

The CSS property to change the border of an element to YUV 151.1350, -7.9546, 31.4536 is called "border". The border property can be set on classes, ids or directly on the HTML element.

This example shows the color as border, it can be applied via the CSS property "border" or "border-color".

```
.border, #border, table{ border:4px solid rgb(187, 136, 135) }
```


If only the border color should be changed use the property border-color.

```
.border{ border-color:rgb(187, 136, 135) }
```

If you want to add a box shadow in that color use:

Here you see how a box with a 4 pixel rgb(187, 136, 135) colored shadow looks like.

```
.boxshadow{ -moz-box-shadow:4px 4px 4px  
4px rgb(187, 136, 135); -webkit-box-  
shadow:4px 4px 4px 4px rgb(187, 136, 135);  
box-shadow:4px 4px 4px 4px rgb(187, 136,  
135) }
```

Background

The CSS property to change the background color of an element to YUV 151.1350, -7.9546, 31.4536 is called "background". The background property can be set on classes, ids or directly on the HTML element.

```
.background, #background, body{  
background: rgb(187, 136, 135) }
```

If only the background color should be changed can be used:

```
.background{ background-color: rgb(187,  
136, 135) }
```

This example shows the color as background, it is applied via the CSS property "background".

To optimize and compress your CSS code, you can use our [online CSS compressor and optimizer](#) based on csstidy. If you want to create a linear or radial gradient as background or border, check our [CSS Gradient Generator](#).

Hey! You found this booklet
interesting? Support Converting
Colors with the new Membership
Option!

The pro membership hides all ads, plus gives you
double the colors in the color bucket, and more
awesome pro features!

[Learn more, Memberships starting at \\$2.50/m!](#)

**Follow me
on Twitter!**

@ConvertingColor