

Converting Colors

YUV(151.2690, -4.5696,
19.0581)

Have a look what the booklet for
YUV(151.2690, -4.5696, 19.0581)
contains.

YUV(151.2690, -4.5696, 19.0581)	3
<i>Conversions</i>	4
<i>Details</i>	6
<i>Harmonies</i>	12
<i>Previews</i>	24
<i>Color Blindness Simulation</i>	28
<i>CSS Examples</i>	31

Color

**YUV(151.2690, -4.5696,
19.0581)**

Conversions

Conversions Part 1

Format	Color
Hex	AD8E8E
RGB	173, 142, 142
RGB Percent	68%, 56%, 56%
CMY	0.3216, 0.4431, 0.4431
CMYK	0.00, 0.18, 0.18, 0.32
HSL	0°, 16%, 62%
HSV	0°, 18%, 68%
XYZ	31.7891, 30.1832, 29.7417
YIQ	151.2690, 18.4760, 6.5720

Conversions

Conversions Part 2

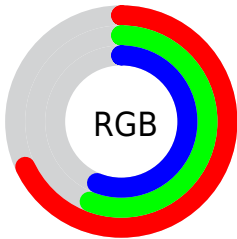
Format	Color
RYB	173, 142, 142
Decimal	11374222
CIELab	61.81, 11.67, 4.39
CIElCh	62, 12.472, 20.616
Yxy	30.1832, 0.3466, 0.3291
Android (android.graphics.Color)	4289564302 (0xFFAD8E8E)
YUV	151.2690, -4.5696, 19.0581
Hunter-Lab	54.9393, 7.1403, 6.3605

Details

The YUV color **151.2690, -4.5696, 19.0581** is a dark color, and the websafe version is hex **CC9999**. A complement of this color would be **163.7310, 4.5696, -19.0581**, and the grayscale version is **151.0000, 0.0000, 0.0000**.

A 20% lighter version of the original color is **205.8670, -4.8644, 20.2876**, and **100.3720, -4.1274, 17.2138** is the 20% darker color. If you saturate the color by 10%, you get **139.3520, -7.0755, 29.5093**, and if you desaturate by 10%, it is **163.1860, -2.0637, 8.6069**.

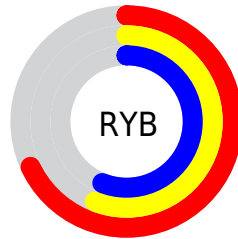
Distribution



Red (68%)

Green (56%)

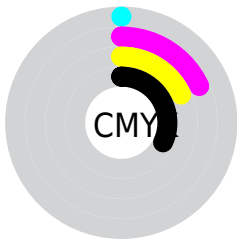
Blue (56%)



Red (68%)

Yellow (56%)

Blue (56%)

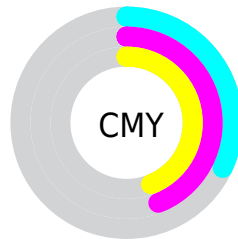


Cyan (0%)

Magenta (18%)

Yellow (18%)

Black (32%)



Cyan (32%)

Magenta (44%)

Yellow (44%)

Brightness & Saturation Gradients

These gradients show how the YUV color 151.2690, -4.5696, 19.0581 changes by changing the brightness by 10 percent. The first figure shows a shift by +10% for each color and the second figure -10%.

Similar to the brightness gradients but the following saturation gradients show a change of the YUV color 151.2690, -4.5696, 19.0581 by changing the saturation by 10% instead.

■ 151.2690, -4.5696,
19.0581

■ 151.2690, -4.5696,
19.0581

255.0000, 0.0000,
0.0000

■ 124.9700, -4.4222,
18.4433

■ 205.8670, -4.8644,
20.2876

■ 100.3720, -4.1274,
17.2138

■ 233.2690, -4.5696,
19.0581

■ 76.0730, -3.9800,
16.5990

■ 252.8970, -0.4422,
1.8443

■ 53.4750, -3.6852,
15.3694

■ 31.9910, -2.9536,
14.0399

■ 8.6710, -4.2748,
17.8285

■ 0.0000, 0.0000,

0.0000

■ 151.2690, -4.5696,
19.0581

■ 151.2690, -4.5696,
19.0581

■ 139.3520, -7.0755,
29.5093

■ 163.1860, -2.0637,
8.6069

■ 126.7340, -9.7289,
40.5753

■ 175.8040, 0.5896,
-2.4591

■ 114.8170,
-12.2348, 51.0265

■ 187.7210, 3.0955,
-12.9103

■ 102.9000,
-14.7407, 61.4777

■ 199.6380, 5.6015,
-23.3615

■ 90.9830, -17.2466,
71.9289

■ 212.2560, 8.2548,
-34.4275

■ 78.3650, -19.8999,
82.9949

■ 224.1730, 10.7607,
-44.8787

■ 66.4480, -22.4059,
93.4461

■ 230.4820, 12.0874,
-50.4117

■ 54.5310, -24.9118,
103.8973

■ 51.7270, -25.5014,
106.3564

Harmonies

Analogous

The Analogous color harmony consists of three colors that are next to each other on the color wheel.



151.6260, 0.6774, 16.1140



151.2690, -4.5696, 19.0581



150.5200, -8.6374, 17.0840

Triad

The Triadic color harmony groups three colors that are evenly spaced from another and form a triangle on the color wheel.



151.2690, -4.5696, 19.0581



146.7510, -5.7932, -8.5516



147.8980, 11.3893, -13.0655

Complementary

The Complementary color scheme is a pair of colors which are on the opposite of each other on the color wheel.



151.2690, -4.5696, 19.0581



163.7310, 4.5696, -19.0581

Split Complementary

Split-complementary colors differ from the complementary color scheme. The scheme consists of three colors, the original color and two neighbors of the complement color.



146.0990, 9.8112, -20.2578



151.2690, -4.5696, 19.0581



146.0750, -0.5300, -16.7288

Square

The Square scheme is like the rectangle color scheme, but the four colors are evenly spaced on the color wheel.



151.2690, -4.5696, 19.0581



148.1930, -9.4621, 1.5847



145.6490, 5.5960, -21.6172



150.2090, 9.7570, -2.8143

Rectangle

The Rectangle color scheme consists of four colors that form a rectangle on the color wheel.



151.2690, -4.5696, 19.0581



149.7430, -10.2263, 13.3804



145.6490, 5.5960, -21.6172



147.1750, 11.2527, -15.9395

Sweetspot

The Sweet Spot groups the original color and five complimentary colors.



151.2690, -4.5696, 19.0581



216.2890, -1.6215, 6.7625



154.8030, 8.9711, 15.9588



107.0930, -1.0318, 4.3034



240.0000, 0.0000, 0.0000



112.0000, 0.0000, 0.0000

Same Dimension

The Same Dimension uses a secret algorithm to generate beautiful new colors.



151.2690, -4.5696, 19.0581



189.6510, -7.2229, 30.1241



160.6610, -9.1999, 10.8213



80.6910, -1.3267, 5.5330



44.8500, -22.1110, 92.2166



6.8770, -3.3904, 14.1399

Inverse Universe

The Inverse Universe completely reimagines the original color for something new.



163.7310, 4.5696, -19.0581



209.3490, 7.2229, -30.1241



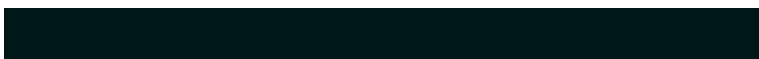
154.9260, 8.9105, -11.3361



84.3090, 1.3267, -5.5330



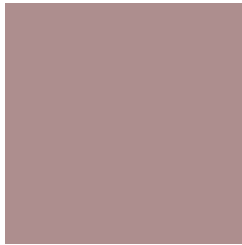
105.1500, 22.1110, -92.2166



16.1230, 3.3904, -14.1399

Previews

White Background



This preview shows how the YUV color 151.2690, -4.5696, 19.0581 looks on a white background.

Color Contrast Check

Large Text (above 18pt) WCAG AA × Fail

Any Text WCAG AA × Fail

Large Text (above 18pt) WCAG AAA × Fail

Any Text WCAG AAA × Fail

Black Background



This preview shows how the YUV color 151.2690, -4.5696, 19.0581 looks on a black background.

Color Contrast Check

Large Text (above 18pt) WCAG AA ✓ Pass

Any Text WCAG AA ✓ Pass

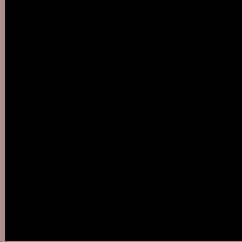
Large Text (above 18pt) WCAG AAA ✓ Pass

Any Text WCAG AAA ✓ Pass

If you want to check with other color combinations, try the [Color Contrast Checker](#).

YUV 151.2690, -4.5696, 19.0581

Background



This preview shows how black text looks on a background with the YUV color 151.2690, -4.5696, 19.0581.



This preview shows how white text looks on a background with the YUV color 151.2690, -4.5696,

Color Blindness Simulation

Color vision deficiency is a very complex topic, and I could not describe the different causes any better than Wikipedia does, so if you want to learn more, you should check out their [article about color blindness](#).

Dichromacy



Original Color

151.2690, -4.5696, 19.0581

Protanopia

149.8540, -1.9000, 2.7590

Deuteranopia

150.6490, -4.2640, 14.3398



Tritanopia

152.0070, -0.4965, 19.2879

Trichromacy



Original Color

151.2690, -4.5696, 19.0581

Protanomaly

150.0720, -2.5005, 8.7069

Deuteranomaly

150.6600, -4.2694, 16.0842

Tritanomaly

151.6650, -1.8068, 19.5878

Monochromacy



Original Color

151.2690, -4.5696, 19.0581

Achromatopsia

151.0000, 0.0000, 0.0000

Achromatomaly

151.2890, -1.6215, 6.7625

CSS Examples

Text

The CSS property to change the color of the text to YUV 151.2690, -4.5696, 19.0581 is called "color". The color property can be set on classes, ids or directly on the HTML element.

This example shows how text in the color `rgb(173, 142, 142)` looks like.

```
.text, #text, p{  
    color:rgb(173, 142, 142)  
}
```

If you want to add a text shadow in that color use the text-shadow property, you can generate a text shadow directly with our [CSS Text Shadow Generator](#).

Here you see how black text with a 4 pixel rgb(173, 142, 142) colored shadow looks like.

```
.shadow{ text-shadow: 4px 4px 2px rgb(173, 142, 142) }
```

Border

The CSS property to change the border of an element to YUV 151.2690, -4.5696, 19.0581 is called "border". The border property can be set on classes, ids or directly on the HTML element.

This example shows the color as border, it can be applied via the CSS property "border" or "border-color".

```
.border, #border, table{ border:4px solid rgb(173, 142, 142) }
```


If only the border color should be changed use the property `border-color`.

```
.border{ border-color:rgb(173, 142, 142) }
```

If you want to add a box shadow in that color use:

Here you see how a box with a 4 pixel `rgb(173, 142, 142)` colored shadow looks like.

```
.boxshadow{ -moz-box-shadow:4px 4px 4px  
4px rgb(173, 142, 142); -webkit-box-  
shadow:4px 4px 4px 4px rgb(173, 142, 142);  
box-shadow:4px 4px 4px 4px rgb(173, 142,  
142) }
```

Background

The CSS property to change the background color of an element to YUV 151.2690, -4.5696, 19.0581 is called "background". The background property can be set on classes, ids or directly on the HTML element.

```
.background, #background, body{  
background: rgb(173, 142, 142) }
```

If only the background color should be changed can be used:

```
.background{ background-color: rgb(173,  
142, 142) }
```

This example shows the color as background, it is applied via the CSS property "background".

To optimize and compress your CSS code, you can use our [online CSS compressor and optimizer](#) based on csstidy. If you want to create a linear or radial gradient as background or border, check our [CSS Gradient Generator](#).

Hey! You found this booklet interesting? Support Converting Colors with the new Membership Option!

The pro membership hides all ads, plus gives you double the colors in the color bucket, and more awesome pro features!

[Learn more, Memberships starting at \\$2.50/m!](#)

**Follow me
on Twitter!**

@ConvertingColor