

Converting Colors

YUV(151.2890, -14.9325,
29.5645)

Have a look what the booklet for
YUV(151.2890, -14.9325, 29.5645)
contains.

YUV(151.2890, -14.9325, 29.5645)	3
<i>Conversions</i>	4
<i>Details</i>	6
<i>Harmonies</i>	12
<i>Previews</i>	24
<i>Color Blindness Simulation</i>	28
<i>CSS Examples</i>	31

Color

**YUV(151.2890, -14.9325,
29.5645)**

Conversions

Conversions Part 1

Format	Color
Hex	B98C79
RGB	185, 140, 121
RGB Percent	73%, 55%, 47%
CMY	0.2745, 0.4510, 0.5255
CMYK	0.00, 0.24, 0.35, 0.27
HSL	18°, 31%, 60%
HSV	18°, 35%, 73%
XYZ	32.8369, 30.4509, 22.2361
YIQ	151.2890, 32.9190, 3.6310

Conversions

Conversions Part 2

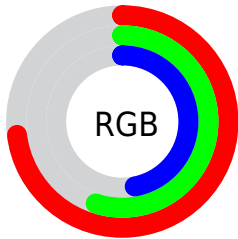
Format	Color
R_{YB}	185, 148, 121
Decimal	12160121
CIE _{Lab}	62.04, 14.46, 16.78
CIE _{LCh}	62, 22.146, 49.248
Yxy	30.4509, 0.3839, 0.3561
Android (android.graphics.Color)	4290350201 (0xFFB98C79)
YUV	151.2890, -14.9325, 29.5645
Hunter-Lab	55.1824, 9.6492, 14.7364

Details

The YUV color $151.2890, -14.9325, 29.5645$ is a dark color, and the websafe version is hex $CC9999$. A complement of this color would be $154.7110, 14.9325, -29.5645$, and the grayscale version is $151.0000, 0.0000, 0.0000$.

A 20% lighter version of the original color is $205.9580, -16.2483, 31.6088$, and $99.9080, -13.7586, 26.3907$ is the 20% darker color. If you saturate the color by 10%, you get $141.6060, -19.0328, 38.0565$, and if you desaturate by 10%, it is $160.9720, -10.8322, 21.0726$.

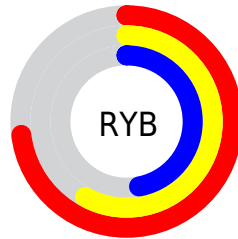
Distribution



Red (73%)

Green (55%)

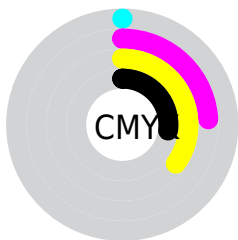
Blue (47%)



Red (73%)

Yellow (58%)

Blue (47%)

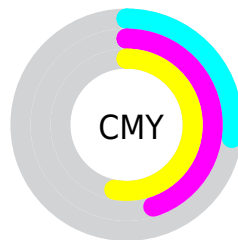


Cyan (0%)

Magenta (24%)

Yellow (35%)

Black (27%)



Cyan (27%)

Magenta (45%)

Yellow (53%)

Brightness & Saturation Gradients

These gradients show how the YUV color 151.2890, -14.9325, 29.5645 changes by changing the brightness by 10 percent. The first figure shows a shift by +10% for each color and the second figure -10%.

Similar to the brightness gradients but the following saturation gradients show a change of the YUV color 151.2890, -14.9325, 29.5645 by changing the saturation by 10% instead.

■ 151.2890,
-14.9325, 29.5645

■ 151.2890,
-14.9325, 29.5645

255.0000, 0.0000,
0.0000

■ 124.8050,
-14.2009, 28.2350

■ 205.9580,
-16.2483, 31.6088

■ 99.9080, -13.7586,
26.3907

■ 229.4730,
-14.0372, 22.3872

■ 75.5380, -12.5902,
24.9612

■ 249.1010, -9.9098,
5.1734

■ 52.6410, -12.1480,
23.1168

■ 30.4020, -13.0162,
21.5724

■ 9.8670, -4.8644,
20.2876

■ 0.0000, 0.0000,

0.0000

■ 151.2890,
-14.9325, 29.5645

■ 151.2890,
-14.9325, 29.5645

■ 141.6060,
-19.0328, 38.0565

■ 160.9720,
-10.8322, 21.0726

■ 131.8090,
-23.5698, 46.6485

■ 170.7690, -6.2951,
12.4806

■ 122.0120,
-28.1069, 55.2405

■ 180.5660, -1.7580,
3.8886

■ 112.3290,
-32.2072, 63.7325

■ 190.2490, 2.3422,
-4.6034

■ 102.5320,
-36.7443, 72.3244

■ 199.9320, 6.4425,
-13.0954

■ 92.8490, -40.8446,
80.8164

■ 209.7290, 10.9796,
-21.6873

■ 87.6000, -43.1868,
85.4198

■ 219.5260, 15.5167,
-30.2793

■ 227.6130, 13.5018,
-37.3716

■ 234.0700, 10.3185,
-43.0344

Harmonies

Analogous

The Analogous color harmony consists of three colors that are next to each other on the color wheel.



152.3740, -7.0864, 32.9980



151.2890, -14.9325, 29.5645



149.5990, -18.5363, 18.7687

Triad

The Triadic color harmony groups three colors that are evenly spaced from another and form a triangle on the color wheel.



151.2890, -14.9325, 29.5645



142.9870, -0.4866, -30.6836



150.6630, 17.9141, -5.8435

Complementary

The Complementary color scheme is a pair of colors which are on the opposite of each other on the color wheel.



151.2890, -14.9325, 29.5645



154.7110, 14.9325, -29.5645

Split Complementary

Split-complementary colors differ from the complementary color scheme. The scheme consists of three colors, the original color and two neighbors of the complement color.



146.8130, 20.3052, -26.1460



151.2890, -14.9325, 29.5645



141.0810, 10.3131, -41.2900

Square

The Square scheme is like the rectangle color scheme, but the four colors are evenly spaced on the color wheel.



151.2890, -14.9325, 29.5645



145.4530, -10.5763, -14.4293



142.7420, 17.8752, -40.1157



153.0630, 11.3079, 13.0997

Rectangle

The Rectangle color scheme consists of four colors that form a rectangle on the color wheel.



151.2890, -14.9325, 29.5645



148.5330, -18.5038, 8.3026



142.7420, 17.8752, -40.1157



149.5480, 18.9568, -13.6356

Sweetspot

The Sweet Spot groups the original color and five complimentary colors.



151.2890, -14.9325, 29.5645



227.2850, -5.5635, 11.1511



145.3800, 10.6587, 34.7467



112.4200, -3.6581, 6.6477



247.0000, 0.0000, 0.0000



120.0000, 0.0000, 0.0000

Same Dimension

The Same Dimension uses a secret algorithm to generate beautiful new colors.



151.2890, -14.9325, 29.5645



186.8090, -23.5698, 46.6485



169.4860, -23.9036, 13.6058



86.8650, -1.9054, 4.5034



73.6460, -36.3075, 72.2245



13.0680, -6.4425, 13.0954

Inverse Universe

The Inverse Universe completely reimagines the original color for something new.



154.7110, 14.9325, -29.5645



192.1910, 23.5698, -46.6485



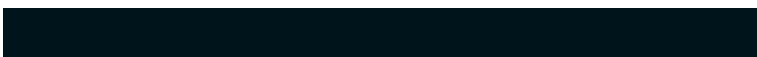
136.5140, 23.9036, -13.6058



87.5480, 2.1948, -3.9886



81.7670, 36.5969, -71.7097



14.9320, 6.4425, -13.0954

Previews

White Background



This preview shows how the YUV color 151.2890, -14.9325, 29.5645 looks on a white background.

Color Contrast Check

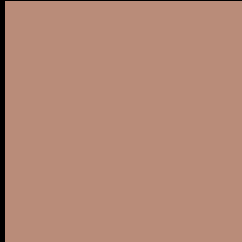
Large Text (above 18pt) WCAG AA × Fail

Any Text WCAG AA × Fail

Large Text (above 18pt) WCAG AAA × Fail

Any Text WCAG AAA × Fail

Black Background



This preview shows how the YUV color 151.2890, -14.9325, 29.5645 looks on a black background.

Color Contrast Check

Large Text (above 18pt) WCAG AA ✓ Pass

Any Text WCAG AA ✓ Pass

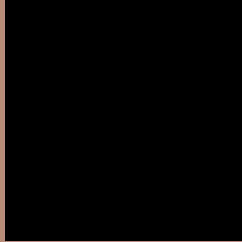
Large Text (above 18pt) WCAG AAA ✓ Pass

Any Text WCAG AAA ✓ Pass

If you want to check with other color combinations, try the [Color Contrast Checker](#).

YUV 151.2890, -14.9325, 29.5645

Background



This preview shows how black text looks on a background with the YUV color 151.2890, -14.9325, 29.5645.



This preview shows how white text looks on a background with the YUV color 151.2890, -14.9325, 29.5645.

29.5645.

Color Blindness Simulation

Color vision deficiency is a very complex topic, and I could not describe the different causes any better than Wikipedia does, so if you want to learn more, you should check out their [article about color blindness](#).

Dichromacy



Original Color

151.2890, -14.9325, 29.5645

Protanopia

149.6560, -11.6624, 7.3177

Deuteranopia

150.5330, -15.0528, 21.4576



Tritanopia

152.8020, -2.8604, 30.8686

Trichromacy



Original Color

151.2890, -14.9325, 29.5645

Protanomaly

150.0700, -12.8525, 15.7246

Deuteranomaly

151.1420, -15.3530, 24.4315

Tritanomaly

152.0640, -6.9336, 30.6389

Monochromacy



Original Color

151.2890, -14.9325, 29.5645

Achromatopsia

151.0000, 0.0000, 0.0000

Achromatomaly

150.9860, -5.4161, 10.5363

CSS Examples

Text

The CSS property to change the color of the text to YUV 151.2890, -14.9325, 29.5645 is called "color". The color property can be set on classes, ids or directly on the HTML element.

This example shows how text in the color `rgb(185, 140, 121)` looks like.

```
.text, #text, p{  
    color:rgb(185, 140, 121)  
}
```

If you want to add a text shadow in that color use the text-shadow property, you can generate a text shadow directly with our [CSS Text Shadow Generator](#).

Here you see how black text with a 4 pixel rgb(185, 140, 121) colored shadow looks like.

```
.shadow{ text-shadow: 4px 4px 2px rgb(185, 140, 121) }
```

Border

The CSS property to change the border of an element to YUV 151.2890, -14.9325, 29.5645 is called "border".

The border property can be set on classes, ids or directly on the HTML element.

This example shows the color as border, it can be applied via the CSS property "border" or "border-color".

```
.border, #border, table{ border:4px solid rgb(185, 140, 121) }
```


If only the border color should be changed use the property `border-color`.

```
.border{ border-color:rgb(185, 140, 121) }
```

If you want to add a box shadow in that color use:

Here you see how a box with a 4 pixel `rgb(185, 140, 121)` colored shadow looks like.

```
.boxshadow{ -moz-box-shadow:4px 4px 4px  
4px rgb(185, 140, 121); -webkit-box-  
shadow:4px 4px 4px 4px rgb(185, 140, 121);  
box-shadow:4px 4px 4px 4px rgb(185, 140,  
121) }
```

Background

The CSS property to change the background color of an element to YUV 151.2890, -14.9325, 29.5645 is called "background". The background property can be set on classes, ids or directly on the HTML element.

```
.background, #background, body{  
background: rgb(185, 140, 121) }
```

If only the background color should be changed can be used:

```
.background{ background-color: rgb(185,  
140, 121) }
```

This example shows the color as background, it is applied via the CSS property "background".

To optimize and compress your CSS code, you can use our [online CSS compressor and optimizer](#) based on csstidy. If you want to create a linear or radial gradient as background or border, check our [CSS Gradient Generator](#).

Hey! You found this booklet interesting? Support Converting Colors with the new Membership Option!

The pro membership hides all ads, plus gives you double the colors in the color bucket, and more awesome pro features!

[Learn more, Memberships starting at \\$2.50/m!](#)

**Follow me
on Twitter!**

@ConvertingColor