

# Converting Colors

YUV(151.5850, 3.1626, 59.1230)

Have a look what the booklet for  
YUV(151.5850, 3.1626, 59.1230)  
contains.

<b>YUV(151.5850, 3.1626, 59.1230)</b> .....	3
<b><i>Conversions</i></b> .....	4
<b><i>Details</i></b> .....	6
<b><i>Harmonies</i></b> .....	12
<b><i>Previews</i></b> .....	24
<b><i>Color Blindness Simulation</i></b> .....	28
<b><i>CSS Examples</i></b> .....	31

# Color

**YUV(151.5850, 3.1626,  
59.1230)**

# Conversions

## Conversions Part 1

Format	Color
Hex	DB749E
RGB	219, 116, 158
RGB Percent	86%, 45%, 62%
CMY	0.1412, 0.5451, 0.3804
CMYK	0.00, 0.47, 0.28, 0.14
HSL	336°, 59%, 66%
HSV	336°, 47%, 86%
XYZ	41.6304, 30.0195, 35.9479
YIQ	151.5850, 47.9060, 34.8980

# Conversions

## Conversions Part 2

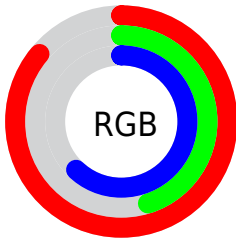
<b>Format</b>	<b>Color</b>
R <sub>Y</sub> B	219, 116, 158
Decimal	14382238
CIE Lab	61.67, 44.93, -4.31
CIE LCh	62, 45.135, 354.515
Yxy	30.0195, 0.3869, 0.2790
Android (android.graphics.Color)	4292572318 (0xFFDB749E)
YUV	151.5850, 3.1626, 59.1230
Hunter-Lab	54.7900, 39.7447, -0.5474

# Details

The YUV color **151.5850, 3.1626, 59.1230** is a light color, and the websafe version is hex **CC6699**. A complement of this color would be **183.4150, -3.1626, -59.1230**, and the grayscale version is **152.0000, 0.0000, 0.0000**.

A 20% lighter version of the original color is **200.3170, 6.2527, 47.9570**, and **97.9050, 4.4838, 55.3343** is the 20% darker color. If you saturate the color by 10%, you get **137.1890, 3.8508, 71.7482**, and if you desaturate by 10%, it is **165.9810, 2.4744, 46.4977**.

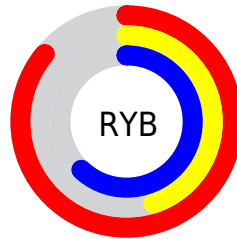
# Distribution



Red (86%)

Green (45%)

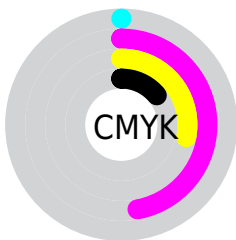
Blue (62%)



Red (86%)

Yellow (45%)

Blue (62%)

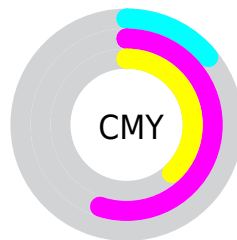


Cyan (0%)

Magenta (47%)

Yellow (28%)

Black (14%)



Cyan (14%)

Magenta (55%)

Yellow (38%)

# Brightness & Saturation Gradients

These gradients show how the YUV color 151.5850, 3.1626, 59.1230 changes by changing the brightness by 10 percent. The first figure shows a shift by +10% for each color and the second figure -10%.

Similar to the brightness gradients but the following saturation gradients show a change of the YUV color 151.5850, 3.1626, 59.1230 by changing the saturation by 10% instead.



151.5850, 3.1626,  
59.1230

151.5850, 3.1626,  
59.1230

255.0000, 0.0000,  
0.0000

124.6880, 3.6048,  
57.2786

200.3170, 6.2527,  
47.9570

97.9050, 4.4838,  
55.3343

219.9450, 10.3801,  
30.7432

70.9480, 5.9416,  
54.4196

238.5640, 8.1029,  
14.4144

39.7080, 10.0040,  
58.1381

27.9530, 4.9532,  
44.7682

18.3830, -0.6818,  
32.1131

5.9800, -2.9481,

12.2955

■ 0.0000, 0.0000,  
0.0000

■ 151.5850, 3.1626,  
59.1230

■ 151.5850, 3.1626,  
59.1230

■ 137.1890, 3.8508,  
71.7482

■ 165.9810, 2.4744,  
46.4977

■ 122.7930, 4.5391,  
84.3735

■ 180.3770, 1.7861,  
33.8724

■ 108.3970, 5.2273,  
96.9988

■ 194.7730, 1.0979,  
21.2471

■ 94.0010, 5.9155,  
109.6241

■ 209.1690, 0.4097,  
8.6218

■ 80.1920, 6.3143,  
121.7346

■ 223.5650, -0.2785,  
-4.0035

■ 75.6270, 6.5929,  
125.7381

■ 237.3740, -0.6774,  
-16.1140

■ 243.5520, 2.6859,  
-21.5321

■ 244.2360, 5.3067,  
-22.1320

# Harmonies

## Analogous

The Analogous color harmony consists of three colors that are next to each other on the color wheel.



153.4150, 20.9944, 32.9620



151.5850, 3.1626, 59.1230



149.6940, -15.6251, 65.1664

# Triad

The Triadic color harmony groups three colors that are evenly spaced from another and form a triangle on the color wheel.



151.5850, 3.1626, 59.1230



142.3410, -34.1851, -2.0531



121.1370, 45.2885, -106.2371

# Complementary

The Complementary color scheme is a pair of colors which are on the opposite of each other on the color wheel.



151.5850, 3.1626, 59.1230



183.4150, -3.1626, -59.1230

# Split Complementary

Split-complementary colors differ from the complementary color scheme. The scheme consists of three colors, the original color and two neighbors of the complement color.



119.8370, 30.1534, -105.0970



151.5850, 3.1626, 59.1230



135.8770, -17.1944, -38.4801

# Square

The Square scheme is like the rectangle color scheme, but the four colors are evenly spaced on the color wheel.



151.5850, 3.1626, 59.1230



145.6870, -38.7927, 29.2155



115.1630, 12.2446, -100.9980



133.7210, 46.4795, -68.1613



# Rectangle

The Rectangle color scheme consists of four colors that form a rectangle on the color wheel.



151.5850, 3.1626, 59.1230



148.7890, -26.5180, 58.9440



115.1630, 12.2446, -100.9980



121.2850, 40.7785, -106.3669

# Sweetspot

The Sweet Spot groups the original color and five complimentary colors.



151.5850, 3.1626, 59.1230



231.4740, 1.2453, 20.6323



145.6820, 36.1458, 26.5889



113.6040, 0.6882, 12.6253



0.0000, 0.0000, 0.0000



128.0000, 0.0000, 0.0000



# Same Dimension

The Same Dimension uses a secret algorithm to generate beautiful new colors.



151.5850, 3.1626, 59.1230



161.3690, 4.2551, 82.1144



152.0800, -17.7874, 58.6888



102.7450, 0.1257, 6.3626



59.8210, 5.5112, 99.2580



15.9200, 1.5184, 26.3802



# Inverse Universe

The Inverse Universe completely reimagines the original color for something new.



151.5850, 3.1626, 59.1230



161.3690, 4.2551, 82.1144



182.9200, 17.7874, -58.6888



102.7450, 0.1257, 6.3626



59.8210, 5.5112, 99.2580



15.9200, 1.5184, 26.3802



# Previews

## White Background



This preview shows how the YUV color 151.5850, 3.1626, 59.1230 looks on a white background.

## Color Contrast Check

Large Text (above 18pt) WCAG AA ✓ Pass

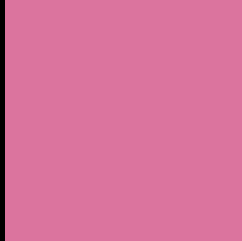
Any Text WCAG AA ✗ Fail

Large Text (above 18pt) WCAG AAA ✗ Fail

Any Text WCAG AAA ✗ Fail



# Black Background



This preview shows how the YUV color 151.5850, 3.1626, 59.1230 looks on a black background.

## Color Contrast Check

Large Text (above 18pt) WCAG AA ✓ Pass

Any Text WCAG AA ✓ Pass

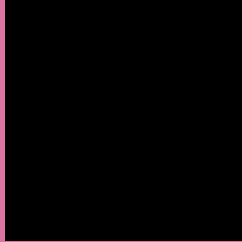
Large Text (above 18pt) WCAG AAA ✓ Pass

Any Text WCAG AAA ✓ Pass

If you want to check with other color combinations, try the [Color Contrast Checker](#).

# YUV 151.5850, 3.1626, 59.1230

## Background



This preview shows how black text looks on a background with the YUV color 151.5850, 3.1626, 59.1230.



This preview shows how white text looks on a background with the YUV color 151.5850, 3.1626, 59.1230.



# Color Blindness Simulation

Color vision deficiency is a very complex topic, and I could not describe the different causes any better than Wikipedia does, so if you want to learn more, you should check out their [article about color blindness](#).

## Dichromacy



### Original Color

151.5850, 3.1626, 59.1230

### Protanopia

149.9250, 13.8410, -6.0732

### Deuteranopia

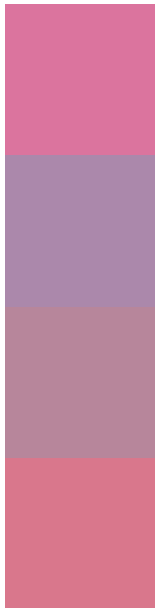
150.9950, 0.9885, 9.6514



## Tritanopia

150.4310, -10.0725, 57.5040

# Trichromacy



## Original Color

151.5850, 3.1626, 59.1230

## Protanomaly

150.4550, 10.1287, 18.0180

## Deuteranomaly

151.0450, 1.9498, 28.0245

## Tritanomaly

150.6960, -5.2731, 58.1486

# Monochromacy



## Original Color

151.5850, 3.1626, 59.1230

## Achromatopsia

152.0000, 0.0000, 0.0000

## Achromatomaly

151.7730, 1.0979, 21.2471

# CSS Examples

## Text

The CSS property to change the color of the text to YUV 151.5850, 3.1626, 59.1230 is called "color". The color property can be set on classes, ids or directly on the HTML element.

This example shows how text in the color `rgb(219, 116, 158)` looks like.

```
.text, #text, p{  
    color:rgb(219, 116, 158)  
}
```

If you want to add a text shadow in that color use the text-shadow property, you can generate a text shadow directly with our [CSS Text Shadow Generator](#).

Here you see how black text with a 4 pixel rgb(219, 116, 158) colored shadow looks like.

```
.shadow{ text-shadow: 4px 4px 2px rgb(219, 116, 158) }
```

## Border

The CSS property to change the border of an element to YUV 151.5850, 3.1626, 59.1230 is called "border". The border property can be set on classes, ids or directly on the HTML element.

This example shows the color as border, it can be applied via the CSS property "border" or "border-color".

```
.border, #border, table{ border:4px solid rgb(219, 116, 158) }
```



If only the border color should be changed use the property `border-color`.

```
.border{ border-color:rgb(219, 116, 158) }
```

If you want to add a box shadow in that color use:

Here you see how a box with a 4 pixel `rgb(219, 116, 158)` colored shadow looks like.

```
.boxshadow{ -moz-box-shadow:4px 4px 4px  
4px rgb(219, 116, 158); -webkit-box-  
shadow:4px 4px 4px 4px rgb(219, 116, 158);  
box-shadow:4px 4px 4px 4px rgb(219, 116,  
158) }
```

# Background

The CSS property to change the background color of an element to YUV 151.5850, 3.1626, 59.1230 is called "background". The background property can be set on classes, ids or directly on the HTML element.

```
.background, #background, body{  
background: rgb(219, 116, 158) }
```

If only the background color should be changed can be used:

```
.background{ background-color: rgb(219,  
116, 158) }
```

This example shows the color as background, it is applied via the CSS property "background".

To optimize and compress your CSS code, you can use our [online CSS compressor and optimizer](#) based on csstidy. If you want to create a linear or radial gradient as background or border, check our [CSS Gradient Generator](#).

Hey! You found this booklet interesting? Support Converting Colors with the new Membership Option!

The pro membership hides all ads, plus gives you double the colors in the color bucket, and more awesome pro features!

**[Learn more, Memberships starting at \\$2.50/m!](#)**

**Follow me  
on Twitter!**

@ConvertingColor