

Converting Colors

YUV(151.8990, -20.1632,
27.2756)

Have a look what the booklet for
YUV(151.8990, -20.1632, 27.2756)
contains.

YUV(151.8990, -20.1632, 27.2756)	3
<i>Conversions</i>	4
<i>Details</i>	6
<i>Harmonies</i>	12
<i>Previews</i>	24
<i>Color Blindness Simulation</i>	28
<i>CSS Examples</i>	31

Color

**YUV(151.8990, -20.1632,
27.2756)**

Conversions

Conversions Part 1

Format	Color
Hex	B7906F
RGB	183, 144, 111
RGB Percent	72%, 56%, 44%
CMY	0.2824, 0.4353, 0.5647
CMYK	0.00, 0.21, 0.39, 0.28
HSL	27°, 33%, 58%
HSV	27°, 39%, 72%
XYZ	32.3709, 31.1615, 19.3476
YIQ	151.8990, 33.8370, -1.9950

Conversions

Conversions Part 2

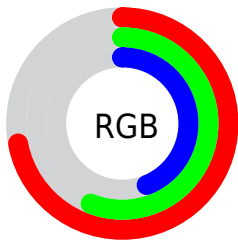
Format	Color
RYB	183, 172, 111
Decimal	12030063
CIELab	62.64, 10.19, 23.15
CIELCh	63, 25.297, 66.239
Yxy	31.1615, 0.3906, 0.3760
Android (android.graphics.Color)	4290220143 (0xFFB7906F)
YUV	151.8990, -20.1632, 27.2756
Hunter-Lab	55.8225, 5.8212, 18.5264

Details

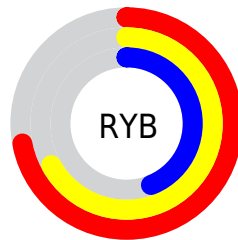
The YUV color **151.8990, -20.1632, 27.2756** is a dark color, and the websafe version is hex **CC9966**. A complement of this color would be **142.1010, 20.1632, -27.2756**, and the grayscale version is **152.0000, 0.0000, 0.0000**.

A 20% lighter version of the original color is **206.5680, -21.4790, 29.3199**, and **100.6320, -18.5526, 24.0017** is the 20% darker color. If you saturate the color by 10%, you get **143.9770, -25.1317, 34.2232**, and if you desaturate by 10%, it is **159.8210, -15.1948, 20.3280**.

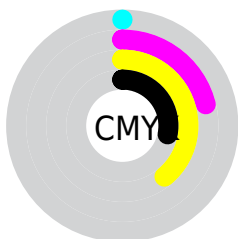
Distribution



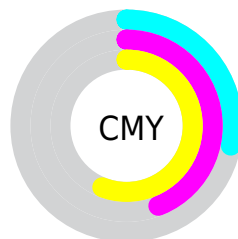
- Red (72%)
- Green (56%)
- Blue (44%)



- Red (72%)
- Yellow (67%)
- Blue (44%)



- Cyan (0%)
- Magenta (21%)
- Yellow (39%)
- Black (28%)



- Cyan (28%)
- Magenta (44%)
- Yellow (56%)

Brightness & Saturation Gradients

These gradients show how the YUV color 151.8990, -20.1632, 27.2756 changes by changing the brightness by 10 percent. The first figure shows a shift by +10% for each color and the second figure -10%.

Similar to the brightness gradients but the following saturation gradients show a change of the YUV color 151.8990, -20.1632, 27.2756 by changing the saturation by 10% instead.

■ 151.8990,
-20.1632, 27.2756

■ 151.8990,
-20.1632, 27.2756

■ 255.0000, 0.0000,
0.0000

■ 125.4150,
-19.4316, 25.9460

■ 206.5680,
-21.4790, 29.3199

■ 100.6320,
-18.5526, 24.0017

■ 230.5670,
-19.9995, 21.4277

■ 76.1480, -17.8210,
22.6722

■ 250.1950,
-15.8721, 4.2140

■ 53.3650, -16.9419,
20.7279

■ 253.9740, -3.9312,
0.8998

■ 31.6960, -15.6261,
18.6836

■ 9.2580, -4.5642,
17.3137

■ 0.0000, 0.0000,

0.0000

■ 151.8990,
-20.1632, 27.2756

■ 151.8990,
-20.1632, 27.2756

■ 143.9770,
-25.1317, 34.2232

■ 159.8210,
-15.1948, 20.3280

■ 135.9410,
-30.5369, 41.2707

■ 167.8570, -9.7895,
13.2804

■ 128.0190,
-35.5054, 48.2183

■ 175.7790, -4.8210,
6.3328

■ 120.0970,
-40.4738, 55.1659

■ 183.7010, 0.1474,
-0.6148

■ 112.1750,
-45.4423, 62.1135

■ 191.7370, 5.5527,
-7.6623

■ 104.7260,
-51.1369, 68.6463

■ 199.0720, 10.8105,
-14.0951

■ 104.0250,
-51.2843, 69.2611

■ 206.9940, 15.7790,
-21.0427

■ 214.6880, 19.8738,
-27.7904

■ 220.5580, 16.9799,
-32.9384

Harmonies

Analogous

The Analogous color harmony consists of three colors that are next to each other on the color wheel.



153.6750, -13.6438, 36.2420



151.8990, -20.1632, 27.2756



150.1590, -21.2774, 11.2616

Triad

The Triadic color harmony groups three colors that are evenly spaced from another and form a triangle on the color wheel.



151.8990, -20.1632, 27.2756



140.9620, 7.4137, -44.6937



154.0990, 16.7132, 6.0522

Complementary

The Complementary color scheme is a pair of colors which are on the opposite of each other on the color wheel.



151.8990, -20.1632, 27.2756



142.1010, 20.1632, -27.2756

Split Complementary

Split-complementary colors differ from the complementary color scheme. The scheme consists of three colors, the original color and two neighbors of the complement color.



150.4380, 22.4621, -17.9241



151.8990, -20.1632, 27.2756



140.6760, 17.9077, -50.5819

Square

The Square scheme is like the rectangle color scheme, but the four colors are evenly spaced on the color wheel.



151.8990, -20.1632, 27.2756



143.7440, -5.2968, -27.8395



144.8220, 23.2588, -40.1859



154.8150, 7.4862, 25.5952

Rectangle

The Rectangle color scheme consists of four colors that form a rectangle on the color wheel.



151.8990, -20.1632, 27.2756



148.1790, -18.3292, -1.0340



144.8220, 23.2588, -40.1859



153.3260, 19.0663, -2.0399

Sweetspot

The Sweet Spot groups the original color and five complimentary colors.



151.8990, -20.1632, 27.2756



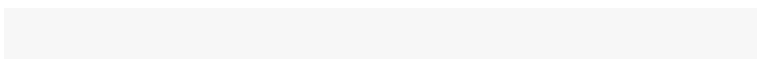
225.0030, -7.8895, 10.5214



137.0880, 6.8586, 40.2648



112.7790, -4.8210, 6.3328



247.0000, 0.0000, 0.0000



120.0000, 0.0000, 0.0000

Same Dimension

The Same Dimension uses a secret algorithm to generate beautiful new colors.



151.8990, -20.1632, 27.2756



189.1260, -31.1211, 41.9855



172.4440, -30.2919, 9.2576



88.0390, -2.4842, 3.4738



88.3210, -43.5423, 59.3545



16.0030, -7.8895, 10.5214

Inverse Universe

The Inverse Universe completely reimagines the original color for something new.



142.1010, 20.1632, -27.2756



173.8740, 31.1211, -41.9855



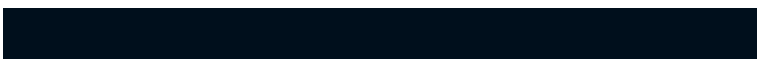
121.5560, 30.2919, -9.2576



86.9610, 2.4842, -3.4738



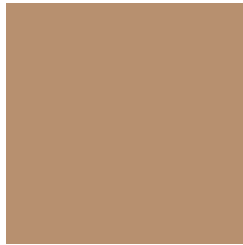
67.0920, 43.8316, -58.8397



11.9970, 7.8895, -10.5214

Previews

White Background



This preview shows how the YUV color 151.8990, -20.1632, 27.2756 looks on a white background.

Color Contrast Check

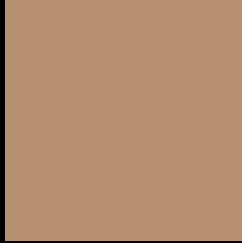
Large Text (above 18pt) WCAG AA × Fail

Any Text WCAG AA × Fail

Large Text (above 18pt) WCAG AAA × Fail

Any Text WCAG AAA × Fail

Black Background



This preview shows how the YUV color 151.8990, -20.1632, 27.2756 looks on a black background.

Color Contrast Check

Large Text (above 18pt) WCAG AA ✓ Pass

Any Text WCAG AA ✓ Pass

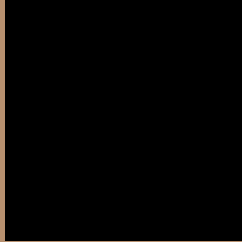
Large Text (above 18pt) WCAG AAA ✓ Pass

Any Text WCAG AAA ✓ Pass

If you want to check with other color combinations, try the [Color Contrast Checker](#).

YUV 151.8990, -20.1632, 27.2756

Background



This preview shows how black text looks on a background with the YUV color 151.8990, -20.1632, 27.2756.



This preview shows how white text looks on a background with the YUV color 151.8990, -20.1632, 27.2756.

Color Blindness Simulation

Color vision deficiency is a very complex topic, and I could not describe the different causes any better than Wikipedia does, so if you want to learn more, you should check out their [article about color blindness](#).

Dichromacy



Original Color

151.8990, -20.1632, 27.2756

Protanopia

150.6580, -18.0724, 9.9469

Deuteranopia

151.5890, -20.0104, 24.9164



Tritanopia

154.4920, -2.7076, 28.5095

Trichromacy



Original Color

151.8990, -20.1632, 27.2756

Protanomaly

151.1750, -18.8203, 16.5095

Deuteranomaly

151.8880, -20.1578, 25.5312

Tritanomaly

153.7710, -9.2541, 28.2648

Monochromacy



Original Color

151.8990, -20.1632, 27.2756

Achromatopsia

152.0000, 0.0000, 0.0000

Achromatomaly

151.8180, -7.3053, 9.8066

CSS Examples

Text

The CSS property to change the color of the text to YUV 151.8990, -20.1632, 27.2756 is called "color". The color property can be set on classes, ids or directly on the HTML element.

This example shows how text in the color `rgb(183, 144, 111)` looks like.

```
.text, #text, p{  
    color:rgb(183, 144, 111)  
}
```

If you want to add a text shadow in that color use the text-shadow property, you can generate a text shadow directly with our [CSS Text Shadow Generator](#).

Here you see how black text with a 4 pixel rgb(183, 144, 111) colored shadow looks like.

```
.shadow{ text-shadow: 4px 4px 2px rgb(183, 144, 111) }
```

Border

The CSS property to change the border of an element to YUV 151.8990, -20.1632, 27.2756 is called "border".

The border property can be set on classes, ids or directly on the HTML element.

This example shows the color as border, it can be applied via the CSS property "border" or "border-color".

```
.border, #border, table{ border:4px solid rgb(183, 144, 111) }
```


If only the border color should be changed use the property `border-color`.

```
.border{ border-color:rgb(183, 144, 111) }
```

If you want to add a box shadow in that color use:

Here you see how a box with a 4 pixel `rgb(183, 144, 111)` colored shadow looks like.

```
.boxshadow{ -moz-box-shadow:4px 4px 4px  
4px rgb(183, 144, 111); -webkit-box-  
shadow:4px 4px 4px 4px rgb(183, 144, 111);  
box-shadow:4px 4px 4px 4px rgb(183, 144,  
111) }
```

Background

The CSS property to change the background color of an element to YUV 151.8990, -20.1632, 27.2756 is called "background". The background property can be set on classes, ids or directly on the HTML element.

```
.background, #background, body{  
background: rgb(183, 144, 111) }
```

If only the background color should be changed can be used:

```
.background{ background-color: rgb(183,  
144, 111) }
```

This example shows the color as background, it is applied via the CSS property "background".

To optimize and compress your CSS code, you can use our [online CSS compressor and optimizer](#) based on csstidy. If you want to create a linear or radial gradient as background or border, check our [CSS Gradient Generator](#).

Hey! You found this booklet interesting? Support Converting Colors with the new Membership Option!

The pro membership hides all ads, plus gives you double the colors in the color bucket, and more awesome pro features!

[Learn more, Memberships starting at \\$2.50/m!](#)

**Follow me
on Twitter!**

@ConvertingColor