

Converting Colors

YUV(152.0940, -15.8223,
34.9976)

Have a look what the booklet for
YUV(152.0940, -15.8223, 34.9976)
contains.

YUV(152.0940, -15.8223, 34.9976)	3
<i>Conversions</i>	4
<i>Details</i>	6
<i>Harmonies</i>	12
<i>Previews</i>	24
<i>Color Blindness Simulation</i>	28
<i>CSS Examples</i>	31

Color

**YUV(152.0940, -15.8223,
34.9976)**

Conversions

Conversions Part 1

Format	Color
Hex	C08A78
RGB	192, 138, 120
RGB Percent	75%, 54%, 47%
CMY	0.2471, 0.4588, 0.5294
CMYK	0.00, 0.28, 0.38, 0.25
HSL	15°, 36%, 61%
HSV	15°, 38%, 75%
XYZ	34.2169, 30.7395, 21.8992
YIQ	152.0940, 37.9620, 5.8500

Conversions

Conversions Part 2

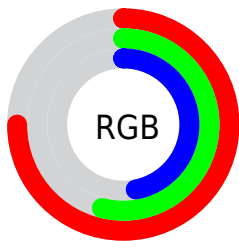
Format	Color
R _Y B	192, 144, 120
Decimal	12618360
CIE Lab	62.29, 18.24, 17.80
CIE LCh	62, 25.488, 44.290
Yxy	30.7395, 0.3940, 0.3539
Android (android.graphics.Color)	4290808440 (0xFFC08A78)
YUV	152.0940, -15.8223, 34.9976
Hunter-Lab	55.4432, 13.1360, 15.3916

Details

The YUV color **152.0940, -15.8223, 34.9976** is a light color, and the websafe version is hex **CC9999**. A complement of this color would be **159.9060, 15.8223, -34.9976**, and the grayscale version is **152.0000, 0.0000, 0.0000**.

A 20% lighter version of the original color is **207.0620, -17.2856, 37.6566**, and **100.7130, -14.6485, 31.8237** is the 20% darker color. If you saturate the color by 10%, you get **141.7100, -20.0700, 44.1043**, and if you desaturate by 10%, it is **162.4780, -11.5747, 25.8908**.

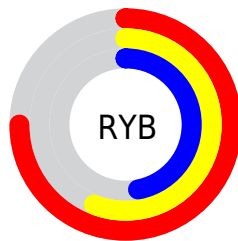
Distribution



Red (75%)

Green (54%)

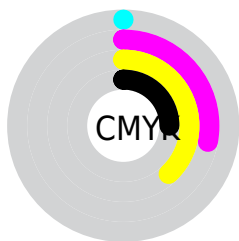
Blue (47%)



Red (75%)

Yellow (56%)

Blue (47%)

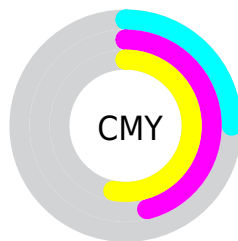


Cyan (0%)

Magenta (28%)

Yellow (38%)

Black (25%)



Cyan (25%)

Magenta (46%)

Yellow (53%)

Brightness & Saturation Gradients

These gradients show how the YUV color 152.0940, -15.8223, 34.9976 changes by changing the brightness by 10 percent. The first figure shows a shift by +10% for each color and the second figure -10%.

Similar to the brightness gradients but the following saturation gradients show a change of the YUV color 152.0940, -15.8223, 34.9976 by changing the saturation by 10% instead.

■ 152.0940,
-15.8223, 34.9976

■ 152.0940,
-15.8223, 34.9976

255.0000, 0.0000,
0.0000

■ 125.6100,
-15.0907, 33.6680

■ 207.0620,
-17.2856, 37.6566

■ 100.7130,
-14.6485, 31.8237

■ 228.1850,
-13.8952, 23.5168

■ 76.0440, -13.3327,
29.7794

■ 247.8130, -9.7678,
6.3030

■ 52.9620, -12.3063,
27.2203

■ 29.6090, -13.6112,
25.7759

■ 11.0630, -5.4541,
22.7467

■ 0.0000, 0.0000,

0.0000

■ 152.0940,
-15.8223, 34.9976

■ 152.0940,
-15.8223, 34.9976

■ 141.7100,
-20.0700, 44.1043

■ 162.4780,
-11.5747, 25.8908

■ 130.7390,
-24.0283, 53.7259

■ 173.4490, -7.6164,
16.2692

■ 120.2410,
-28.7128, 62.9326

■ 183.9470, -2.9319,
7.0625

■ 109.2700,
-32.6711, 72.5542

■ 194.9180, 1.0264,
-2.5591

■ 98.8860, -36.9188,
81.6610

■ 205.3020, 5.2741,
-11.6659

■ 88.5020, -41.1665,
90.7677

■ 215.6860, 9.5218,
-20.7726

■ 85.5840, -42.1929,
93.3268

■ 226.6570, 13.4801,
-30.3942

■ 234.9890, 9.8654,
-37.7014

■ 236.1630, 9.2866,
-38.7310

Harmonies

Analogous

The Analogous color harmony consists of three colors that are next to each other on the color wheel.



153.2220, -6.5184, 37.5163



152.0940, -15.8223, 34.9976



150.2360, -21.3153, 23.4720

Triad

The Triadic color harmony groups three colors that are evenly spaced from another and form a triangle on the color wheel.



152.0940, -15.8223, 34.9976



141.9220, -1.9335, -33.2576



150.5420, 21.4248, -11.8763

Complementary

The Complementary color scheme is a pair of colors which are on the opposite of each other on the color wheel.



152.0940, -15.8223, 34.9976



159.9060, 15.8223, -34.9976

Split Complementary

Split-complementary colors differ from the complementary color scheme. The scheme consists of three colors, the original color and two neighbors of the complement color.



145.0830, 24.1161, -35.1528



152.0940, -15.8223, 34.9976



139.4500, 10.6242, -47.7526

Square

The Square scheme is like the rectangle color scheme, but the four colors are evenly spaced on the color wheel.



152.0940, -15.8223, 34.9976



145.6550, -13.6339, -13.7294



139.9580, 20.2337, -49.9522



153.5620, 14.5129, 11.7851

Rectangle

The Rectangle color scheme consists of four colors that form a rectangle on the color wheel.



152.0940, -15.8223, 34.9976



149.0560, -21.7196, 13.1059



139.9580, 20.2337, -49.9522



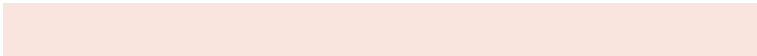
149.1280, 22.6149, -20.2833

Sweetspot

The Sweet Spot groups the original color and five complimentary colors.



152.0940, -15.8223, 34.9976



234.4810, -6.1531, 13.6102



147.6840, 12.9738, 38.8651



116.1320, -3.5161, 7.7772



252.0000, 0.0000, 0.0000



125.0000, 0.0000, 0.0000

Same Dimension

The Same Dimension uses a secret algorithm to generate beautiful new colors.



152.0940, -15.8223, 34.9976



187.8100, -25.0493, 54.5406



172.6390, -25.9510, 16.9796



91.7510, -2.3422, 4.6034



71.6190, -35.3082, 78.3871



14.5630, -7.1796, 16.1692

Inverse Universe

The Inverse Universe completely reimagines the original color for something new.



159.9060, 15.8223, -34.9976



199.7770, 24.7599, -55.0554



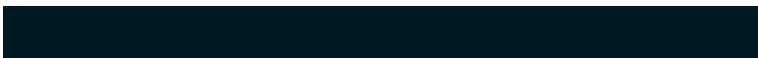
138.7740, 26.2404, -16.4648



92.2490, 2.3422, -4.6034



88.7940, 35.5976, -77.8723



18.4370, 7.1796, -16.1692

Previews

White Background



This preview shows how the YUV color 152.0940, -15.8223, 34.9976 looks on a white background.

Color Contrast Check

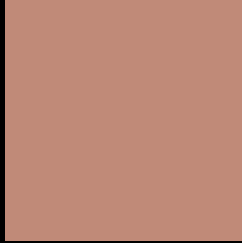
Large Text (above 18pt) WCAG AA × Fail

Any Text WCAG AA × Fail

Large Text (above 18pt) WCAG AAA × Fail

Any Text WCAG AAA × Fail

Black Background



This preview shows how the YUV color 152.0940, -15.8223, 34.9976 looks on a black background.

Color Contrast Check

Large Text (above 18pt) WCAG AA ✓ Pass

Any Text WCAG AA ✓ Pass

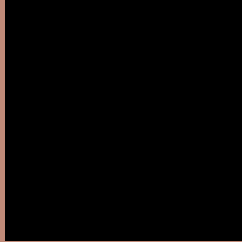
Large Text (above 18pt) WCAG AAA ✓ Pass

Any Text WCAG AAA ✓ Pass

If you want to check with other color combinations, try the [Color Contrast Checker](#).

YUV 152.0940, -15.8223, 34.9976

Background



This preview shows how black text looks on a background with the YUV color 152.0940, -15.8223, 34.9976.



This preview shows how white text looks on a background with the YUV color 152.0940, -15.8223, 34.9976.

Color Blindness Simulation

Color vision deficiency is a very complex topic, and I could not describe the different causes any better than Wikipedia does, so if you want to learn more, you should check out their [article about color blindness](#).

Dichromacy



Original Color

152.0940, -15.8223, 34.9976

Protanopia

150.5420, -12.0992, 7.4177

Deuteranopia

151.3050, -15.9264, 21.6575



Tritanopia

153.1940, -4.0396, 35.7869

Trichromacy



Original Color

152.0940, -15.8223, 34.9976

Protanomaly

150.9670, -13.2947, 17.5689

Deuteranomaly

151.3380, -15.9426, 26.8906

Tritanomaly

152.4560, -8.1128, 35.5571

Monochromacy



Original Color

152.0940, -15.8223, 34.9976

Achromatopsia

152.0000, 0.0000, 0.0000

Achromatomaly

152.1820, -6.0057, 12.9954

CSS Examples

Text

The CSS property to change the color of the text to YUV 152.0940, -15.8223, 34.9976 is called "color". The color property can be set on classes, ids or directly on the HTML element.

This example shows how text in the color `rgb(192, 138, 120)` looks like.

```
.text, #text, p{  
    color:rgb(192, 138, 120)  
}
```

If you want to add a text shadow in that color use the text-shadow property, you can generate a text shadow directly with our [CSS Text Shadow Generator](#).

Here you see how black text with a 4 pixel rgb(192, 138, 120) colored shadow looks like.

```
.shadow{ text-shadow: 4px 4px 2px rgb(192, 138, 120) }
```

Border

The CSS property to change the border of an element to YUV 152.0940, -15.8223, 34.9976 is called "border".

The border property can be set on classes, ids or directly on the HTML element.

This example shows the color as border, it can be applied via the CSS property "border" or "border-color".

```
.border, #border, table{ border:4px solid rgb(192, 138, 120) }
```


If only the border color should be changed use the property `border-color`.

```
.border{ border-color:rgb(192, 138, 120) }
```

If you want to add a box shadow in that color use:

Here you see how a box with a 4 pixel `rgb(192, 138, 120)` colored shadow looks like.

```
.boxshadow{ -moz-box-shadow:4px 4px 4px  
4px rgb(192, 138, 120); -webkit-box-  
shadow:4px 4px 4px 4px rgb(192, 138, 120);  
box-shadow:4px 4px 4px 4px rgb(192, 138,  
120) }
```

Background

The CSS property to change the background color of an element to YUV 152.0940, -15.8223, 34.9976 is called "background". The background property can be set on classes, ids or directly on the HTML element.

```
.background, #background, body{  
background: rgb(192, 138, 120) }
```

If only the background color should be changed can be used:

```
.background{ background-color: rgb(192,  
138, 120) }
```

This example shows the color as background, it is applied via the CSS property "background".

To optimize and compress your CSS code, you can use our [online CSS compressor and optimizer](#) based on csstidy. If you want to create a linear or radial gradient as background or border, check our [CSS Gradient Generator](#).

Hey! You found this booklet interesting? Support Converting Colors with the new Membership Option!

The pro membership hides all ads, plus gives you double the colors in the color bucket, and more awesome pro features!

[Learn more, Memberships starting at \\$2.50/m!](#)

**Follow me
on Twitter!**

@ConvertingColor