

Converting Colors

YUV(152.5920, -11.1379,
25.7908)

Have a look what the booklet for
YUV(152.5920, -11.1379, 25.7908)
contains.

YUV(152.5920, -11.1379, 25.7908)	3
<i>Conversions</i>	4
<i>Details</i>	6
<i>Harmonies</i>	12
<i>Previews</i>	24
<i>Color Blindness Simulation</i>	28
<i>CSS Examples</i>	31

Color

**YUV(152.5920, -11.1379,
25.7908)**

Conversions

Conversions Part 1

Format	Color
Hex	B68E82
RGB	182, 142, 130
RGB Percent	71%, 56%, 51%
CMY	0.2863, 0.4431, 0.4902
CMYK	0.00, 0.22, 0.29, 0.29
HSL	14°, 26%, 61%
HSV	14°, 29%, 71%
XYZ	32.9937, 30.9028, 25.3450
YIQ	152.5920, 27.6920, 4.7480

Conversions

Conversions Part 2

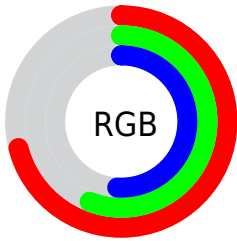
Format	Color
RYB	182, 146, 130
Decimal	11964034
CIELab	62.43, 13.36, 12.19
CIElCh	62, 18.083, 42.376
Yxy	30.9028, 0.3697, 0.3463
Android (android.graphics.Color)	4290154114 (0xFFB68E82)
YUV	152.5920, -11.1379, 25.7908
Hunter-Lab	55.5903, 8.6595, 11.8814

Details

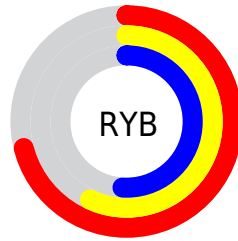
The YUV color $152.5920, -11.1379, 25.7908$ is a light color, and the websafe version is hex $CC9999$. A complement of this color would be $159.4080, 11.1379, -25.7908$, and the grayscale version is $153.0000, 0.0000, 0.0000$.

A 20% lighter version of the original color is $207.3750, -12.0169, 27.7351$, and $101.5100, -10.1114, 23.2317$ is the 20% darker color. If you saturate the color by 10%, you get $142.3220, -14.9487, 34.7976$, and if you desaturate by 10%, it is $162.8620, -7.3270, 16.7840$.

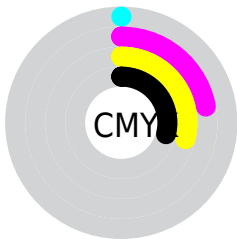
Distribution



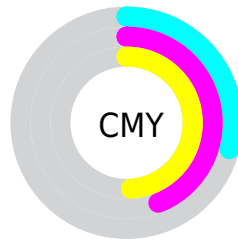
- Red (71%)
- Green (56%)
- Blue (51%)



- Red (71%)
- Yellow (57%)
- Blue (51%)



- Cyan (0%)
- Magenta (22%)
- Yellow (29%)
- Black (29%)



- Cyan (29%)
- Magenta (44%)
- Yellow (49%)

Brightness & Saturation Gradients

These gradients show how the YUV color 152.5920, -11.1379, 25.7908 changes by changing the brightness by 10 percent. The first figure shows a shift by +10% for each color and the second figure -10%.

Similar to the brightness gradients but the following saturation gradients show a change of the YUV color 152.5920, -11.1379, 25.7908 by changing the saturation by 10% instead.

■ 152.5920,
-11.1379, 25.7908

■ 152.5920,
-11.1379, 25.7908

255.0000, 0.0000,
0.0000

■ 126.4070,
-10.5537, 25.0761

■ 207.3750,
-12.0169, 27.7351

■ 101.5100,
-10.1114, 23.2317

■ 231.7870,
-10.2480, 20.3578

■ 77.0260, -9.3798,
21.9022

■ 251.4150, -6.1206,
3.1440

■ 54.1290, -8.9376,
20.0579

■ 31.6450, -8.2060,
18.7283

■ 9.5680, -4.7170,
19.6729

■ 0.0000, 0.0000,

0.0000

■ 152.5920,
-11.1379, 25.7908

■ 152.5920,
-11.1379, 25.7908

■ 142.3220,
-14.9487, 34.7976

■ 162.8620, -7.3270,
16.7840

■ 132.0520,
-18.7596, 43.8044

■ 173.1320, -3.5161,
7.7772

■ 121.6680,
-23.0073, 52.9112

■ 183.5160, 0.7316,
-1.3295

■ 111.3980,
-26.8182, 61.9180

■ 193.7860, 4.5425,
-10.3363

■ 101.1280,
-30.6291, 70.9247

■ 204.0560, 8.3534,
-19.3431

■ 90.8580, -34.4400,
79.9315

■ 214.3260, 12.1643,
-28.3499

■ 80.5880, -38.2509,
88.9383

■ 224.3680, 15.1016,
-37.1567

■ 79.0720, -38.9825,
90.2679

■ 232.5860, 11.0501,
-44.3639

■ 233.1730, 10.7607,
-44.8787

Harmonies

Analogous

The Analogous color harmony consists of three colors that are next to each other on the color wheel.



153.7260, -4.3019, 26.5503



152.5920, -11.1379, 25.7908



151.5110, -15.0419, 17.9689

Triad

The Triadic color harmony groups three colors that are evenly spaced from another and form a triangle on the color wheel.



152.5920, -11.1379, 25.7908



145.5860, -2.2609, -21.5619



150.9570, 15.3042, -8.7323

Complementary

The Complementary color scheme is a pair of colors which are on the opposite of each other on the color wheel.



152.5920, -11.1379, 25.7908



159.4080, 11.1379, -25.7908

Split Complementary

Split-complementary colors differ from the complementary color scheme. The scheme consists of three colors, the original color and two neighbors of the complement color.



147.7980, 16.3686, -23.5018



152.5920, -11.1379, 25.7908



144.4090, 6.2074, -31.0537

Square

The Square scheme is like the rectangle color scheme, but the four colors are evenly spaced on the color wheel.



152.5920, -11.1379, 25.7908



147.8990, -10.3032, -8.6814



145.2330, 13.1961, -32.6533



153.5030, 10.5980, 7.4519

Rectangle

The Rectangle color scheme consists of four colors that form a rectangle on the color wheel.



152.5920, -11.1379, 25.7908



150.0540, -15.3096, 10.4766



145.2330, 13.1961, -32.6533



150.1520, 16.1941, -14.1653

Sweetspot

The Sweet Spot groups the original color and five complimentary colors.



152.5920, -11.1379, 25.7908



225.2140, -4.5425, 10.3363



150.2220, 10.2436, 27.8693



112.6480, -2.7845, 6.4477



247.0000, 0.0000, 0.0000



120.0000, 0.0000, 0.0000

Same Dimension

The Same Dimension uses a secret algorithm to generate beautiful new colors.



152.5920, -11.1379, 25.7908



191.4860, -17.0016, 39.9158



167.2670, -18.3726, 12.9208



86.8650, -1.9054, 4.5034



67.7760, -33.4136, 77.3724



11.8940, -5.8637, 14.1250

Inverse Universe

The Inverse Universe completely reimagines the original color for something new.



159.4080, 11.1379, -25.7908



202.5140, 17.0016, -39.9158



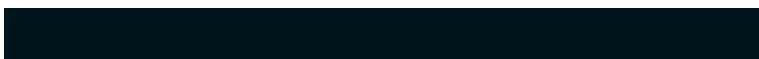
144.7330, 18.3726, -12.9208



88.1350, 1.9054, -4.5034



88.2240, 33.4136, -77.3724



16.1060, 5.8637, -14.1250

Previews

White Background



This preview shows how the YUV color 152.5920, -11.1379, 25.7908 looks on a white background.

Color Contrast Check

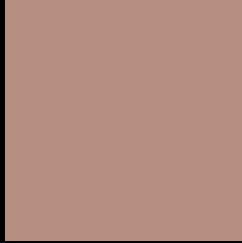
Large Text (above 18pt) WCAG AA × Fail

Any Text WCAG AA × Fail

Large Text (above 18pt) WCAG AAA × Fail

Any Text WCAG AAA × Fail

Black Background



This preview shows how the YUV color 152.5920, -11.1379, 25.7908 looks on a black background.

Color Contrast Check

Large Text (above 18pt) WCAG AA ✓ Pass

Any Text WCAG AA ✓ Pass

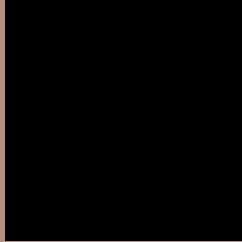
Large Text (above 18pt) WCAG AAA ✓ Pass

Any Text WCAG AAA ✓ Pass

If you want to check with other color combinations, try the [Color Contrast Checker](#).

YUV 152.5920, -11.1379, 25.7908

Background



This preview shows how black text looks on a background with the YUV color 152.5920, -11.1379, 25.7908.



This preview shows how white text looks on a background with the YUV color 152.5920, -11.1379, 25.7908.

25.7908.

Color Blindness Simulation

Color vision deficiency is a very complex topic, and I could not describe the different causes any better than Wikipedia does, so if you want to learn more, you should check out their [article about color blindness](#).

Dichromacy



Original Color

152.5920, -11.1379, 25.7908

Protanopia

151.1550, -8.4574, 6.0031

Deuteranopia

151.8470, -11.2636, 19.4282



Tritanopia

153.7090, -1.8285, 26.5652

Trichromacy



Original Color

152.5920, -11.1379, 25.7908

Protanomaly

151.9710, -9.3527, 13.1804

Deuteranomaly

152.1570, -11.4164, 21.7873

Tritanomaly

153.1990, -5.0281, 26.1355

Monochromacy



Original Color

152.5920, -11.1379, 25.7908

Achromatopsia

153.0000, 0.0000, 0.0000

Achromatomaly

153.0290, -3.9583, 9.6216

CSS Examples

Text

The CSS property to change the color of the text to YUV 152.5920, -11.1379, 25.7908 is called "color". The color property can be set on classes, ids or directly on the HTML element.

This example shows how text in the color `rgb(182, 142, 130)` looks like.

```
.text, #text, p{  
    color:rgb(182, 142, 130)  
}
```

If you want to add a text shadow in that color use the text-shadow property, you can generate a text shadow directly with our [CSS Text Shadow Generator](#).

Here you see how black text with a 4 pixel rgb(182, 142, 130) colored shadow looks like.

```
.shadow{ text-shadow: 4px 4px 2px rgb(182, 142, 130) }
```

Border

The CSS property to change the border of an element to YUV 152.5920, -11.1379, 25.7908 is called "border".

The border property can be set on classes, ids or directly on the HTML element.

This example shows the color as border, it can be applied via the CSS property "border" or "border-color".

```
.border, #border, table{ border:4px solid rgb(182, 142, 130) }
```


If only the border color should be changed use the property `border-color`.

```
.border{ border-color:rgb(182, 142, 130) }
```

If you want to add a box shadow in that color use:

Here you see how a box with a 4 pixel `rgb(182, 142, 130)` colored shadow looks like.

```
.boxshadow{ -moz-box-shadow:4px 4px 4px  
4px rgb(182, 142, 130); -webkit-box-  
shadow:4px 4px 4px 4px rgb(182, 142, 130);  
box-shadow:4px 4px 4px 4px rgb(182, 142,  
130) }
```

Background

The CSS property to change the background color of an element to YUV 152.5920, -11.1379, 25.7908 is called "background". The background property can be set on classes, ids or directly on the HTML element.

```
.background, #background, body{  
background: rgb(182, 142, 130) }
```

If only the background color should be changed can be used:

```
.background{ background-color: rgb(182,  
142, 130) }
```

This example shows the color as background, it is applied via the CSS property "background".

To optimize and compress your CSS code, you can use our [online CSS compressor and optimizer](#) based on csstidy. If you want to create a linear or radial gradient as background or border, check our [CSS Gradient Generator](#).

Hey! You found this booklet interesting? Support Converting Colors with the new Membership Option!

The pro membership hides all ads, plus gives you double the colors in the color bucket, and more awesome pro features!

[Learn more, Memberships starting at \\$2.50/m!](#)

**Follow me
on Twitter!**

@ConvertingColor