

Converting Colors

YUV(152.6830, -12.1687,
76.5770)

Have a look what the booklet for
YUV(152.6830, -12.1687, 76.5770)
contains.

YUV(152.6830, -12.1687, 76.5770)	3
<i>Conversions</i>	4
<i>Details</i>	6
<i>Harmonies</i>	12
<i>Previews</i>	24
<i>Color Blindness Simulation</i>	28
<i>CSS Examples</i>	31

Color

**YUV(152.6830, -12.1687,
76.5770)**

Conversions

Conversions Part 1

Format	Color
Hex	F07180
RGB	240, 113, 128
RGB Percent	94%, 44%, 50%
CMY	0.0588, 0.5569, 0.4980
CMYK	0.00, 0.53, 0.47, 0.06
HSL	353°, 81%, 69%
HSV	353°, 53%, 94%
XYZ	45.7366, 31.8940, 24.1677
YIQ	152.6830, 70.8770, 31.5890

Conversions

Conversions Part 2

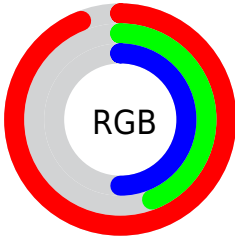
Format	Color
R_{YB}	240, 113, 128
Decimal	15757696
CIE Lab	63.26, 50.20, 15.55
CIE LCh	63, 52.550, 17.216
Yxy	31.8940, 0.4493, 0.3133
Android (android.graphics.Color)	4293947776 (0xFFFF07180)
YUV	152.6830, -12.1687, 76.5770
Hunter-Lab	56.4748, 45.7288, 14.1600

Details

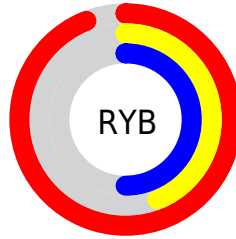
The YUV color **152.6830, -12.1687, 76.5770** is a light color, and the websafe version is hex **CC6666**. A complement of this color would be **200.3170, 12.1687, -76.5770**, and the grayscale version is **153.0000, 0.0000, 0.0000**.

A 20% lighter version of the original color is **195.4950, -7.1460, 52.1859**, and **97.4590, -9.1003, 72.3885** is the 20% darker color. If you saturate the color by 10%, you get **136.2010, -14.3961, 91.0317**, and if you desaturate by 10%, it is **169.1650, -9.9413, 62.1223**.

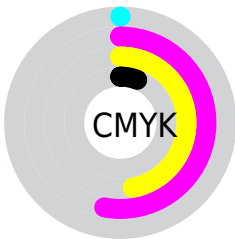
Distribution



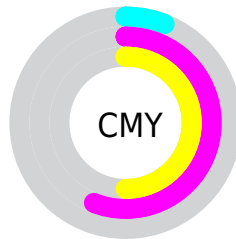
- Red (94%)
- Green (44%)
- Blue (50%)



- Red (94%)
- Yellow (44%)
- Blue (50%)



- Cyan (0%)
- Magenta (53%)
- Yellow (47%)
- Black (6%)



- Cyan (6%)
- Magenta (56%)
- Yellow (50%)

Brightness & Saturation Gradients

These gradients show how the YUV color 152.6830, -12.1687, 76.5770 changes by changing the brightness by 10 percent. The first figure shows a shift by +10% for each color and the second figure -10%.

Similar to the brightness gradients but the following saturation gradients show a change of the YUV color 152.6830, -12.1687, 76.5770 by changing the saturation by 10% instead.

■ 152.6830,
-12.1687, 76.5770

■ 152.6830,
-12.1687, 76.5770

255.0000, 0.0000,
0.0000

■ 125.0140,
-10.8529, 74.5327

■ 195.4950, -7.1460,
52.1859

■ 97.4590, -9.1003,
72.3885

■ 215.0090, -3.4554,
35.0721

■ 68.2570, -6.0427,
71.6886

■ 235.2240, 0.3826,
17.3436

■ 40.1690, -2.5483,
70.8888

254.4130, 0.2894,
0.5148

■ 29.1040, -7.4463,
55.1598

■ 19.5490, -9.1447,
39.8605

■ 10.5790, -4.7224,

21.4172

■ 0.0000, 0.0000,
0.0000

■ 152.6830,
-12.1687, 76.5770

■ 152.6830,
-12.1687, 76.5770

■ 136.2010,
-14.3961, 91.0317

■ 169.1650, -9.9413,
62.1223

■ 119.7190,
-16.6235, 105.4864

■ 185.6470, -7.7140,
47.6676

■ 103.2370,
-18.8508, 119.9412

■ 202.1290, -5.4866,
33.2129

■ 86.6410, -21.5150,
134.4958

■ 218.7250, -2.8224,
18.6582

■ 74.9520, -23.1473,
144.7471

■ 235.2070, -0.5951,
4.2035

250.5150, 2.2111,
-9.2217

Harmonies

Analogous

The Analogous color harmony consists of three colors that are next to each other on the color wheel.



155.9260, 9.4035, 64.0859



152.6830, -12.1687, 76.5770



151.6390, -32.3600, 66.0916

Triad

The Triadic color harmony groups three colors that are evenly spaced from another and form a triangle on the color wheel.



152.6830, -12.1687, 76.5770



138.7220, -25.4989, -34.8362



124.0840, 59.1186, -108.8217

Complementary

The Complementary color scheme is a pair of colors which are on the opposite of each other on the color wheel.



152.6830, -12.1687, 76.5770



200.3170, 12.1687, -76.5770

Split Complementary

Split-complementary colors differ from the complementary color scheme. The scheme consists of three colors, the original color and two neighbors of the complement color.



126.7450, 46.4677, -111.1554



152.6830, -12.1687, 76.5770



117.6590, 6.5771, -103.1869

Square

The Square scheme is like the rectangle color scheme, but the four colors are evenly spaced on the color wheel.



152.6830, -12.1687, 76.5770



145.6920, -43.2322, 6.4091



123.7180, 27.2540, -108.5007



151.3440, 45.1864, -26.6117

Rectangle

The Rectangle color scheme consists of four colors that form a rectangle on the color wheel.



152.6830, -12.1687, 76.5770



150.7220, -41.7679, 50.2328



123.7180, 27.2540, -108.5007



125.8620, 55.7770, -110.3810

Sweetspot

The Sweet Spot groups the original color and five complimentary colors.



152.6830, -12.1687, 76.5770



226.8290, -3.8597, 24.7060



160.3680, 39.2586, 54.9283



110.8170, -2.3748, 15.0695



0.0000, 0.0000, 0.0000



128.0000, 0.0000, 0.0000

Same Dimension

The Same Dimension uses a secret algorithm to generate beautiful new colors.



152.6830, -12.1687, 76.5770



142.9030, -15.7282, 98.3091



178.5620, -32.3221, 53.8811



111.7020, -1.3321, 7.2773



57.5240, -17.5133, 110.9195



17.5420, -5.1972, 33.7277

Inverse Universe

The Inverse Universe completely reimagines the original color for something new.



152.6830, -12.1687, 76.5770



142.9030, -15.7282, 98.3091



174.4380, 32.3221, -53.8811



111.7020, -1.3321, 7.2773



57.5240, -17.5133, 110.9195



17.5420, -5.1972, 33.7277

Previews

White Background



This preview shows how the YUV color 152.6830, -12.1687, 76.5770 looks on a white background.

Color Contrast Check

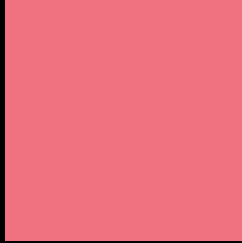
Large Text (above 18pt) WCAG AA × Fail

Any Text WCAG AA × Fail

Large Text (above 18pt) WCAG AAA × Fail

Any Text WCAG AAA × Fail

Black Background



This preview shows how the YUV color 152.6830, -12.1687, 76.5770 looks on a black background.

Color Contrast Check

Large Text (above 18pt) WCAG AA ✓ Pass

Any Text WCAG AA ✓ Pass

Large Text (above 18pt) WCAG AAA ✓ Pass

Any Text WCAG AAA ✓ Pass

If you want to check with other color combinations, try the [Color Contrast Checker](#).

YUV 152.6830, -12.1687, 76.5770

Background



This preview shows how black text looks on a background with the YUV color 152.6830, -12.1687, 76.5770.

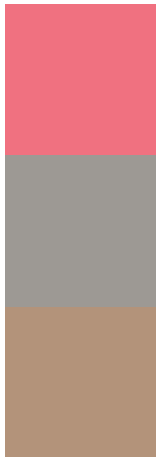


This preview shows how white text looks on a background with the YUV color 152.6830, -12.1687, 76.5770.

Color Blindness Simulation

Color vision deficiency is a very complex topic, and I could not describe the different causes any better than Wikipedia does, so if you want to learn more, you should check out their [article about color blindness](#).

Dichromacy



Original Color

152.6830, -12.1687, 76.5770

Protanopia

153.6260, -2.7736, 2.9590

Deuteranopia

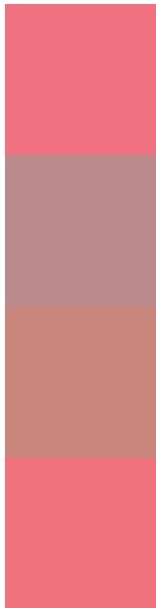
153.7180, -15.6370, 22.1723



Tritanopia

152.5860, -15.0789, 76.6621

Trichromacy



Original Color

152.6830, -12.1687, 76.5770

Protanomaly

152.9930, -5.9125, 29.8241

Deuteranomaly

153.4800, -14.5336, 41.6750

Tritanomaly

152.8140, -14.2053, 76.4621

Monochromacy



Original Color

152.6830, -12.1687, 76.5770

Achromatopsia

153.0000, 0.0000, 0.0000

Achromatomaly

152.7370, -4.3073, 28.2947

CSS Examples

Text

The CSS property to change the color of the text to YUV 152.6830, -12.1687, 76.5770 is called "color". The color property can be set on classes, ids or directly on the HTML element.

This example shows how text in the color `rgb(240, 113, 128)` looks like.

```
.text, #text, p{  
    color:rgb(240, 113, 128)  
}
```

If you want to add a text shadow in that color use the text-shadow property, you can generate a text shadow directly with our [CSS Text Shadow Generator](#).

Here you see how black text with a 4 pixel rgb(240, 113, 128) colored shadow looks like.

```
.shadow{ text-shadow: 4px 4px 2px rgb(240, 113, 128) }
```

Border

The CSS property to change the border of an element to YUV 152.6830, -12.1687, 76.5770 is called "border".

The border property can be set on classes, ids or directly on the HTML element.

This example shows the color as border, it can be applied via the CSS property "border" or "border-color".

```
.border, #border, table{ border:4px solid rgb(240, 113, 128) }
```


If only the border color should be changed use the property border-color.

```
.border{ border-color:rgb(240, 113, 128) }
```

If you want to add a box shadow in that color use:

Here you see how a box with a 4 pixel rgb(240, 113, 128) colored shadow looks like.

```
.boxshadow{ -moz-box-shadow:4px 4px 4px  
4px rgb(240, 113, 128); -webkit-box-  
shadow:4px 4px 4px 4px rgb(240, 113, 128);  
box-shadow:4px 4px 4px 4px rgb(240, 113,  
128) }
```

Background

The CSS property to change the background color of an element to YUV 152.6830, -12.1687, 76.5770 is called "background". The background property can be set on classes, ids or directly on the HTML element.

```
.background, #background, body{  
background: rgb(240, 113, 128) }
```

If only the background color should be changed can be used:

```
.background{ background-color: rgb(240,  
113, 128) }
```

This example shows the color as background, it is applied via the CSS property "background".

To optimize and compress your CSS code, you can use our [online CSS compressor and optimizer](#) based on csstidy. If you want to create a linear or radial gradient as background or border, check our [CSS Gradient Generator](#).

Hey! You found this booklet interesting? Support Converting Colors with the new Membership Option!

The pro membership hides all ads, plus gives you double the colors in the color bucket, and more awesome pro features!

[Learn more, Memberships starting at \\$2.50/m!](#)

**Follow me
on Twitter!**

@ConvertingColor