

# Converting Colors

YUV(152.7080, -6.7580,  
67.7851)

Have a look what the booklet for  
YUV(152.7080, -6.7580, 67.7851)  
contains.

<b>YUV(152.7080, -6.7580, 67.7851)</b> .....	3
<b><i>Conversions</i></b> .....	4
<b><i>Details</i></b> .....	6
<b><i>Harmonies</i></b> .....	12
<b><i>Previews</i></b> .....	24
<b><i>Color Blindness Simulation</i></b> .....	28
<b><i>CSS Examples</i></b> .....	31

# Color

**YUV(152.7080, -6.7580,  
67.7851)**

# Conversions

## Conversions Part 1

Format	Color
Hex	E6748B
RGB	230, 116, 139
RGB Percent	90%, 45%, 55%
CMY	0.0980, 0.5451, 0.4549
CMYK	0.00, 0.50, 0.40, 0.10
HSL	348°, 70%, 68%
HSV	348°, 50%, 90%
XYZ	43.5387, 31.1779, 28.1493
YIQ	152.7080, 60.5610, 31.3210

# Conversions

## Conversions Part 2

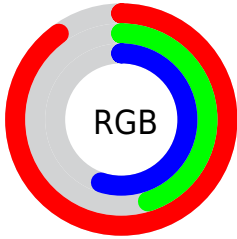
<b>Format</b>	<b>Color</b>
R <sub>Y</sub> B	230, 116, 139
Decimal	15103115
CIE Lab	62.66, 46.39, 8.21
CIE LCh	63, 47.113, 10.033
Yxy	31.1779, 0.4233, 0.3031
Android (android.graphics.Color)	4293293195 (0xFFE6748B)
YUV	152.7080, -6.7580, 67.7851
Hunter-Lab	55.8371, 41.4695, 9.1960

# Details

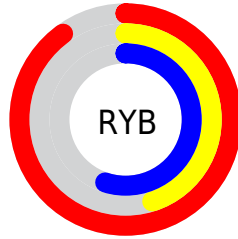
The YUV color **152.7080, -6.7580, 67.7851** is a light color, and the websafe version is hex **CC6666**. A complement of this color would be **193.2920, 6.7580, -67.7851**, and the grayscale version is **153.0000, 0.0000, 0.0000**.

A 20% lighter version of the original color is **198.5100, -3.2094, 49.5417**, and **98.2560, -4.5632, 63.7965** is the 20% darker color. If you saturate the color by 10%, you get **137.1550, -7.9644, 81.4251**, and if you desaturate by 10%, it is **168.2610, -5.5517, 54.1451**.

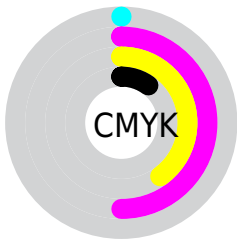
# Distribution



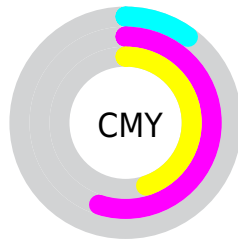
- Red (90%)
- Green (45%)
- Blue (55%)



- Red (90%)
- Yellow (45%)
- Blue (55%)



- Cyan (0%)
- Magenta (50%)
- Yellow (40%)
- Black (10%)



- Cyan (10%)
- Magenta (55%)
- Yellow (45%)

# Brightness & Saturation Gradients

These gradients show how the YUV color 152.7080, -6.7580, 67.7851 changes by changing the brightness by 10 percent. The first figure shows a shift by +10% for each color and the second figure -10%.

Similar to the brightness gradients but the following saturation gradients show a change of the YUV color 152.7080, -6.7580, 67.7851 by changing the saturation by 10% instead.



152.7080, -6.7580,  
67.7851

152.7080, -6.7580,  
67.7851

255.0000, 0.0000,  
0.0000

125.0390, -5.4422,  
65.7408

198.5100, -3.2094,  
49.5417

98.2560, -4.5632,  
63.7965

218.1380, 0.9180,  
32.3280

70.5270, -2.2318,  
62.6818

237.8800, 5.4822,  
15.0142

39.1020, 2.4147,  
65.6855

28.4500, -2.1938,  
50.4714

18.0540, -8.4076,  
36.7866

8.4860, -3.6906,

17.1138

■ 0.0000, 0.0000,  
0.0000

■ 152.7080, -6.7580,  
67.7851

■ 152.7080, -6.7580,  
67.7851

■ 137.1550, -7.9644,  
81.4251

■ 168.2610, -5.5517,  
54.1451

■ 121.4880, -9.6076,  
95.1650

■ 183.9280, -3.9085,  
40.4051

■ 105.9350,  
-10.8140, 108.8050

■ 199.4810, -2.7021,  
26.7652

■ 90.3820, -12.0203,  
122.4450

■ 215.0340, -1.4958,  
13.1252

■ 74.7150, -13.6635,  
136.1849

■ 230.7010, 0.1474,  
-0.6148

■ 74.0140, -13.8109,  
136.7997

■ 246.2540, 1.3538,  
-14.2548

■ 247.5250, 3.6852,  
-15.3694

# Harmonies

## Analogous

The Analogous color harmony consists of three colors that are next to each other on the color wheel.



155.6470, 12.4990, 51.1756



152.7080, -6.7580, 67.7851



151.1640, -25.2239, 63.8772

# Triad

The Triadic color harmony groups three colors that are evenly spaced from another and form a triangle on the color wheel.



152.7080, -6.7580, 67.7851



140.9410, -27.5789, -20.9963



122.4880, 53.0034, -107.4220

# Complementary

The Complementary color scheme is a pair of colors which are on the opposite of each other on the color wheel.



152.7080, -6.7580, 67.7851



193.2920, 6.7580, -67.7851

# Split Complementary

Split-complementary colors differ from the complementary color scheme. The scheme consists of three colors, the original color and two neighbors of the complement color.



123.6330, 39.6209, -108.4261



152.7080, -6.7580, 67.7851



130.1320, -4.0091, -67.6448

# Square

The Square scheme is like the rectangle color scheme, but the four colors are evenly spaced on the color wheel.



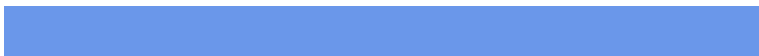
152.7080, -6.7580, 67.7851



146.6590, -39.7649, 14.3311



120.3610, 22.0070, -105.5566



147.0070, 42.8875, -35.9631



# Rectangle

The Rectangle color scheme consists of four colors that form a rectangle on the color wheel.



152.7080, -6.7580, 67.7851



150.1550, -35.0794, 51.6071



120.3610, 22.0070, -105.5566



123.4510, 49.0777, -108.2665

# Sweetspot

The Sweet Spot groups the original color and five complimentary colors.



152.7080, -6.7580, 67.7851



229.1600, -2.5439, 22.6617



155.6070, 36.6757, 43.3177



112.3330, -1.6432, 13.7400



0.0000, 0.0000, 0.0000



128.0000, 0.0000, 0.0000



# Same Dimension

The Same Dimension uses a secret algorithm to generate beautiful new colors.



152.7080, -6.7580, 67.7851



153.2700, -9.0071, 89.2172



168.8700, -26.0649, 53.6110



106.9300, -0.4585, 7.0774



57.6250, -10.6611, 106.4459



16.3890, -3.1498, 30.3538



# Inverse Universe

The Inverse Universe completely reimagines the original color for something new.



152.7080, -6.7580, 67.7851



153.2700, -9.0071, 89.2172



177.1300, 26.0649, -53.6110



106.9300, -0.4585, 7.0774



57.6250, -10.6611, 106.4459



16.3890, -3.1498, 30.3538



# Previews

## White Background



This preview shows how the YUV color 152.7080, -6.7580, 67.7851 looks on a white background.

## Color Contrast Check

Large Text (above 18pt) WCAG AA × Fail

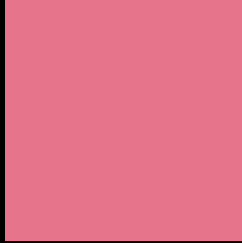
Any Text WCAG AA × Fail

Large Text (above 18pt) WCAG AAA × Fail

Any Text WCAG AAA × Fail



# Black Background



This preview shows how the YUV color 152.7080, -6.7580, 67.7851 looks on a black background.

## Color Contrast Check

Large Text (above 18pt) WCAG AA ✓ Pass

Any Text WCAG AA ✓ Pass

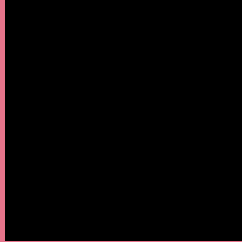
Large Text (above 18pt) WCAG AAA ✓ Pass

Any Text WCAG AAA ✓ Pass

If you want to check with other color combinations, try the [Color Contrast Checker](#).

# YUV 152.7080, -6.7580, 67.7851

## Background



This preview shows how black text looks on a background with the YUV color 152.7080, -6.7580, 67.7851.



This preview shows how white text looks on a background with the YUV color 152.7080, -6.7580,

67.7851.

# Color Blindness Simulation

Color vision deficiency is a very complex topic, and I could not describe the different causes any better than Wikipedia does, so if you want to learn more, you should check out their [article about color blindness](#).

## Dichromacy



### Original Color

152.7080, -6.7580, 67.7851

### Protanopia

152.5100, 3.1996, 0.4297

### Deuteranopia

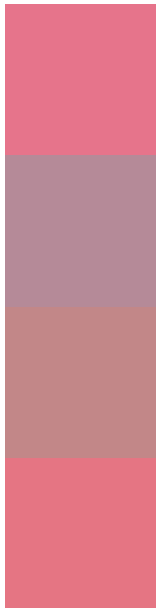
152.7050, -9.2216, 17.7987



## Tritanopia

152.2150, -12.4310, 67.3404

# Trichromacy



## Original Color

152.7080, -6.7580, 67.7851

## Protanomaly

152.4530, -0.2233, 25.0357

## Deuteranomaly

152.7550, -8.2602, 36.1719

## Tritanomaly

152.0840, -10.3944, 67.4553

# Monochromacy



## Original Color

152.7080, -6.7580, 67.7851

## Achromatopsia

153.0000, 0.0000, 0.0000

## Achromatomaly

153.1710, -2.5493, 24.4060

# CSS Examples

## Text

The CSS property to change the color of the text to YUV 152.7080, -6.7580, 67.7851 is called "color". The color property can be set on classes, ids or directly on the HTML element.

This example shows how text in the color `rgb(230, 116, 139)` looks like.

```
.text, #text, p{  
    color:rgb(230, 116, 139)  
}
```

If you want to add a text shadow in that color use the text-shadow property, you can generate a text shadow directly with our [CSS Text Shadow Generator](#).

Here you see how black text with a 4 pixel rgb(230, 116, 139) colored shadow looks like.

```
.shadow{ text-shadow: 4px 4px 2px rgb(230, 116, 139) }
```

## Border

The CSS property to change the border of an element to YUV 152.7080, -6.7580, 67.7851 is called "border". The border property can be set on classes, ids or directly on the HTML element.

This example shows the color as border, it can be applied via the CSS property "border" or "border-color".

```
.border, #border, table{ border:4px solid rgb(230, 116, 139) }
```



If only the border color should be changed use the property `border-color`.

```
.border{ border-color:rgb(230, 116, 139) }
```

If you want to add a box shadow in that color use:

Here you see how a box with a 4 pixel `rgb(230, 116, 139)` colored shadow looks like.

```
.boxshadow{ -moz-box-shadow:4px 4px 4px  
4px rgb(230, 116, 139); -webkit-box-  
shadow:4px 4px 4px 4px rgb(230, 116, 139);  
box-shadow:4px 4px 4px 4px rgb(230, 116,  
139) }
```

# Background

The CSS property to change the background color of an element to YUV 152.7080, -6.7580, 67.7851 is called "background". The background property can be set on classes, ids or directly on the HTML element.

```
.background, #background, body{  
background: rgb(230, 116, 139) }
```

If only the background color should be changed can be used:

```
.background{ background-color: rgb(230,  
116, 139) }
```

This example shows the color as background, it is applied via the CSS property "background".

To optimize and compress your CSS code, you can use our [online CSS compressor and optimizer](#) based on csstidy. If you want to create a linear or radial gradient as background or border, check our [CSS Gradient Generator](#).

Hey! You found this booklet interesting? Support Converting Colors with the new Membership Option!

The pro membership hides all ads, plus gives you double the colors in the color bucket, and more awesome pro features!

**[Learn more, Memberships starting at \\$2.50/m!](#)**

**Follow me  
on Twitter!**

@ConvertingColor