

Converting Colors

YUV(152.7600, -26.0107,
36.1675)

Have a look what the booklet for
YUV(152.7600, -26.0107, 36.1675)
contains.

YUV(152.7600, -26.0107, 36.1675)	3
<i>Conversions</i>	4
<i>Details</i>	6
<i>Harmonies</i>	12
<i>Previews</i>	24
<i>Color Blindness Simulation</i>	28
<i>CSS Examples</i>	31

Color

**YUV(152.7600, -26.0107,
36.1675)**

Conversions

Conversions Part 1

Format	Color
Hex	C28E64
RGB	194, 142, 100
RGB Percent	76%, 56%, 39%
CMY	0.2392, 0.4431, 0.6078
CMYK	0.00, 0.27, 0.48, 0.24
HSL	27°, 44%, 58%
HSV	27°, 48%, 76%
XYZ	34.2214, 31.7354, 16.3785
YIQ	152.7600, 44.4740, -2.0380

Conversions

Conversions Part 2

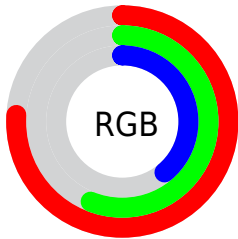
Format	Color
RYB	194, 176, 100
Decimal	12750436
CIELab	63.12, 14.65, 30.05
CIElCh	63, 33.437, 64.006
Yxy	31.7354, 0.4156, 0.3854
Android (android.graphics.Color)	4290940516 (0xFFC28E64)
YUV	152.7600, -26.0107, 36.1675
Hunter-Lab	56.3342, 9.8487, 22.1961

Details

The YUV color **152.7600, -26.0107, 36.1675** is a dark color, and the websafe version is hex **CC9966**. A complement of this color would be **141.2400, 26.0107, -36.1675**, and the grayscale version is **153.0000, 0.0000, 0.0000**.

A 20% lighter version of the original color is **207.6140, -27.9107, 38.9265**, and **101.1940, -24.2526, 32.2789** is the 20% darker color. If you saturate the color by 10%, you get **144.1370, -31.1265, 43.7299**, and if you desaturate by 10%, it is **161.3830, -20.8948, 28.6051**.

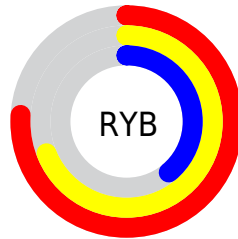
Distribution



Red (76%)

Green (56%)

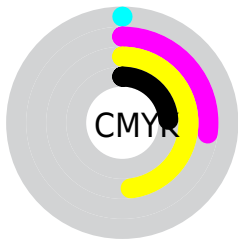
Blue (39%)



Red (76%)

Yellow (69%)

Blue (39%)

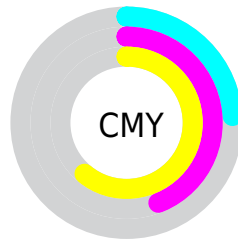


Cyan (0%)

Magenta (27%)

Yellow (48%)

Black (24%)



Cyan (24%)

Magenta (44%)

Yellow (61%)

Brightness & Saturation Gradients

These gradients show how the YUV color 152.7600, -26.0107, 36.1675 changes by changing the brightness by 10 percent. The first figure shows a shift by +10% for each color and the second figure -10%.

Similar to the brightness gradients but the following saturation gradients show a change of the YUV color 152.7600, -26.0107, 36.1675 by changing the saturation by 10% instead.

■ 152.7600,
-26.0107, 36.1675

■ 152.7600,
-26.0107, 36.1675

■ 255.0000, 0.0000,
0.0000

■ 126.3900,
-24.8423, 34.7380

■ 207.6140,
-27.9107, 38.9265

■ 101.1940,
-24.2526, 32.2789

■ 228.0250,
-24.6623, 23.6571

■ 76.5250, -22.9368,
30.2346

■ 247.6530,
-20.5349, 6.4433

■ 52.9160, -22.6366,
27.2607

■ 252.6060, -9.1728,
2.0995

■ 31.7290, -15.6424,
23.9167

■ 10.4650, -5.1592,
21.5172

■ 0.0000, 0.0000,

0.0000

■ 152.7600,
-26.0107, 36.1675

■ 152.7600,
-26.0107, 36.1675

■ 144.1370,
-31.1265, 43.7299

■ 161.3830,
-20.8948, 28.6051

■ 135.9870,
-36.9686, 50.8774

■ 169.5330,
-15.0528, 21.4576

■ 127.3640,
-42.0845, 58.4398

■ 178.1560, -9.9369,
13.8952

■ 118.6270,
-47.6371, 66.1021

■ 186.8930, -4.3842,
6.2328

■ 110.0040,
-52.7530, 73.6645

■ 195.5160, 0.7316,
-1.3295

■ 109.0750,
-53.7740, 74.4792

■ 203.5520, 6.1369,
-8.3771

■ 212.2890, 11.6895,
-16.0395

■ 220.9120, 16.8054,
-23.6018

■ 227.3690, 13.6221,
-29.2646

Harmonies

Analogous

The Analogous color harmony consists of three colors that are next to each other on the color wheel.



154.3560, -16.4445, 47.9228



152.7600, -26.0107, 36.1675



150.3570, -28.2770, 16.3499

Triad

The Triadic color harmony groups three colors that are evenly spaced from another and form a triangle on the color wheel.



152.7600, -26.0107, 36.1675



135.5250, 10.0942, -64.4814



155.9940, 22.6810, 5.2673

Complementary

The Complementary color scheme is a pair of colors which are on the opposite of each other on the color wheel.



152.7600, -26.0107, 36.1675



141.2400, 26.0107, -36.1675

Split Complementary

Split-complementary colors differ from the complementary color scheme. The scheme consists of three colors, the original color and two neighbors of the complement color.



149.5490, 30.7883, -28.5455



152.7600, -26.0107, 36.1675



130.1710, 27.0307, -83.4650

Square

The Square scheme is like the rectangle color scheme, but the four colors are evenly spaced on the color wheel.



152.7600, -26.0107, 36.1675



142.5920, -8.1799, -36.4762



139.0840, 32.4966, -63.2177



157.0700, 10.8115, 32.3876

Rectangle

The Rectangle color scheme consists of four colors that form a rectangle on the color wheel.



152.7600, -26.0107, 36.1675



148.1700, -24.7338, -0.1491



139.0840, 32.4966, -63.2177



154.1390, 26.0605, -5.3839

Sweetspot

The Sweet Spot groups the original color and five complimentary colors.



152.7600, -26.0107, 36.1675



236.0420, -10.3737, 13.9952



134.1480, 9.2940, 52.4902



117.7470, -6.2843, 8.9919



0.0000, 0.0000, 0.0000



128.0000, 0.0000, 0.0000

Same Dimension

The Same Dimension uses a secret algorithm to generate beautiful new colors.



152.7600, -26.0107, 36.1675



187.8090, -40.3318, 56.2955



179.7620, -39.3227, 12.4867



92.9250, -2.9210, 3.5738



90.4030, -44.5687, 61.9136



18.6720, -9.2053, 12.5657

Inverse Universe

The Inverse Universe completely reimagines the original color for something new.



141.2400, 26.0107, -36.1675



170.1910, 40.3318, -56.2955



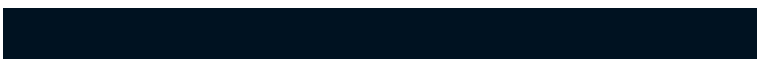
114.2380, 39.3227, -12.4867



91.6620, 2.6316, -4.0886



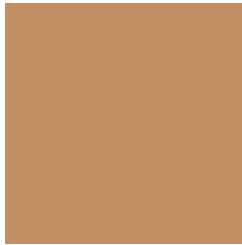
70.5970, 44.5687, -61.9136



14.3280, 9.2053, -12.5657

Previews

White Background



This preview shows how the YUV color 152.7600, -26.0107, 36.1675 looks on a white background.

Color Contrast Check

Large Text (above 18pt) WCAG AA × Fail

Any Text WCAG AA × Fail

Large Text (above 18pt) WCAG AAA × Fail

Any Text WCAG AAA × Fail

Black Background



This preview shows how the YUV color 152.7600, -26.0107, 36.1675 looks on a black background.

Color Contrast Check

Large Text (above 18pt) WCAG AA ✓ Pass

Any Text WCAG AA ✓ Pass

Large Text (above 18pt) WCAG AAA ✓ Pass

Any Text WCAG AAA ✓ Pass

If you want to check with other color combinations, try the [Color Contrast Checker](#).

YUV 152.7600, -26.0107, 36.1675

Background



This preview shows how black text looks on a background with the YUV color 152.7600, -26.0107, 36.1675.



This preview shows how white text looks on a background with the YUV color 152.7600, -26.0107,

Color Blindness Simulation

Color vision deficiency is a very complex topic, and I could not describe the different causes any better than Wikipedia does, so if you want to learn more, you should check out their [article about color blindness](#).

Dichromacy



Original Color

152.7600, -26.0107, 36.1675

Protanopia

151.3010, -23.3194, 12.8910

Deuteranopia

152.0040, -26.1310, 28.0605



Tritanopia

155.6780, -4.7713, 37.1164

Trichromacy



Original Color

152.7600, -26.0107, 36.1675

Protanomaly

151.8290, -24.0727, 21.1980

Deuteranomaly

152.6130, -26.4312, 31.0344

Tritanomaly

154.6150, -12.6282, 37.1716

Monochromacy



Original Color

152.7600, -26.0107, 36.1675

Achromatopsia

153.0000, 0.0000, 0.0000

Achromatomaly

152.9710, -9.3527, 13.1804

CSS Examples

Text

The CSS property to change the color of the text to YUV 152.7600, -26.0107, 36.1675 is called "color". The color property can be set on classes, ids or directly on the HTML element.

This example shows how text in the color `rgb(194, 142, 100)` looks like.

```
.text, #text, p{  
    color:rgb(194, 142, 100)  
}
```

If you want to add a text shadow in that color use the text-shadow property, you can generate a text shadow directly with our [CSS Text Shadow Generator](#).

Here you see how black text with a 4 pixel rgb(194, 142, 100) colored shadow looks like.

```
.shadow{ text-shadow: 4px 4px 2px rgb(194, 142, 100) }
```

Border

The CSS property to change the border of an element to YUV 152.7600, -26.0107, 36.1675 is called "border".

The border property can be set on classes, ids or directly on the HTML element.

This example shows the color as border, it can be applied via the CSS property "border" or "border-color".

```
.border, #border, table{ border:4px solid rgb(194, 142, 100) }
```


If only the border color should be changed use the property `border-color`.

```
.border{ border-color:rgb(194, 142, 100) }
```

If you want to add a box shadow in that color use:

Here you see how a box with a 4 pixel `rgb(194, 142, 100)` colored shadow looks like.

```
.boxshadow{ -moz-box-shadow:4px 4px 4px  
4px rgb(194, 142, 100); -webkit-box-  
shadow:4px 4px 4px 4px rgb(194, 142, 100);  
box-shadow:4px 4px 4px 4px rgb(194, 142,  
100) }
```

Background

The CSS property to change the background color of an element to YUV 152.7600, -26.0107, 36.1675 is called "background". The background property can be set on classes, ids or directly on the HTML element.

```
.background, #background, body{  
background: rgb(194, 142, 100) }
```

If only the background color should be changed can be used:

```
.background{ background-color: rgb(194,  
142, 100) }
```

This example shows the color as background, it is applied via the CSS property "background".

To optimize and compress your CSS code, you can use our [online CSS compressor and optimizer](#) based on csstidy. If you want to create a linear or radial gradient as background or border, check our [CSS Gradient Generator](#).

Hey! You found this booklet interesting? Support Converting Colors with the new Membership Option!

The pro membership hides all ads, plus gives you double the colors in the color bucket, and more awesome pro features!

[Learn more, Memberships starting at \\$2.50/m!](#)

**Follow me
on Twitter!**

@ConvertingColor