

Converting Colors

YUV(152.8190, -25.5468,
27.3457)

Have a look what the booklet for
YUV(152.8190, -25.5468, 27.3457)
contains.

YUV(152.8190, -25.5468, 27.3457)	3
<i>Conversions</i>	4
<i>Details</i>	6
<i>Harmonies</i>	12
<i>Previews</i>	24
<i>Color Blindness Simulation</i>	28
<i>CSS Examples</i>	31

Color

**YUV(152.8190, -25.5468,
27.3457)**

Conversions

Conversions Part 1

Format	Color
Hex	B89365
RGB	184, 147, 101
RGB Percent	72%, 58%, 40%
CMY	0.2784, 0.4235, 0.6039
CMYK	0.00, 0.20, 0.45, 0.28
HSL	33°, 37%, 56%
HSV	33°, 45%, 72%
XYZ	32.5498, 31.9974, 16.7725
YIQ	152.8190, 36.8180, -6.4620

Conversions

Conversions Part 2

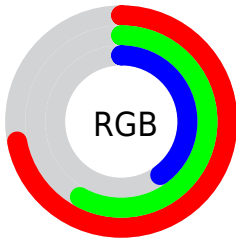
Format	Color
R_{YB}	168, 184, 101
Decimal	12096357
CIE _{Lab}	63.34, 7.83, 29.58
CIE _{LCh}	63, 30.601, 75.174
Yxy	31.9974, 0.4003, 0.3935
Android (android.graphics.Color)	4290286437 (0xFFB89365)
YUV	152.8190, -25.5468, 27.3457
Hunter-Lab	56.5662, 3.7232, 22.0163

Details

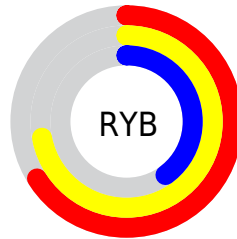
The YUV color **152.8190, -25.5468, 27.3457** is a dark color, and the websafe version is hex **CC9966**. A complement of this color would be **132.1810, 25.5468, -27.3457**, and the grayscale version is **153.0000, 0.0000, 0.0000**.

A 20% lighter version of the original color is **207.6730, -27.4468, 30.1048**, and **101.5520, -23.9361, 24.0719** is the 20% darker color. If you saturate the color by 10%, you get **146.0710, -31.0940, 33.2637**, and if you desaturate by 10%, it is **159.5670, -19.9995, 21.4277**.

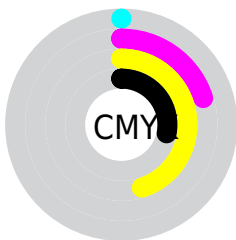
Distribution



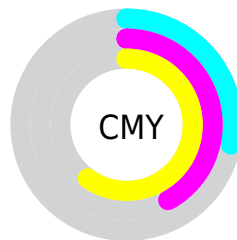
- Red (72%)
- Green (58%)
- Blue (40%)



- Red (66%)
- Yellow (72%)
- Blue (40%)



- Cyan (0%)
- Magenta (20%)
- Yellow (45%)
- Black (28%)



- Cyan (28%)
- Magenta (42%)
- Yellow (60%)

Brightness & Saturation Gradients

These gradients show how the YUV color 152.8190, -25.5468, 27.3457 changes by changing the brightness by 10 percent. The first figure shows a shift by +10% for each color and the second figure -10%.

Similar to the brightness gradients but the following saturation gradients show a change of the YUV color 152.8190, -25.5468, 27.3457 by changing the saturation by 10% instead.

■ 152.8190,
-25.5468, 27.3457

■ 152.8190,
-25.5468, 27.3457

255.0000, 0.0000,
0.0000

■ 126.4490,
-24.3784, 25.9162

■ 207.6730,
-27.4468, 30.1048

■ 101.5520,
-23.9361, 24.0719

■ 231.0740,
-25.6725, 20.9831

■ 77.1820, -22.7677,
22.6424

■ 249.5280,
-20.9663, 4.7989

■ 53.2850, -22.3255,
20.7981

■ 252.7200, -8.7360,
1.9996

■ 32.5710, -16.0575,
17.0392

■ 11.8940, -5.8637,
14.1250

■ 0.0000, 0.0000,

0.0000

■ 152.8190,
-25.5468, 27.3457

■ 152.8190,
-25.5468, 27.3457

■ 146.0710,
-31.0940, 33.2637

■ 159.5670,
-19.9995, 21.4277

■ 139.2090,
-37.0780, 39.2817

■ 166.4290,
-14.0155, 15.4098

■ 131.8740,
-42.3359, 45.7145

■ 173.7640, -8.7577,
8.9770

■ 125.0120,
-48.3199, 51.7325

■ 180.6260, -2.7736,
2.9590

■ 118.2640,
-53.8672, 57.6505

■ 187.3740, 2.7736,
-2.9590

■ 114.8900,
-56.6408, 60.6095

■ 194.1220, 8.3209,
-8.8770

■ 200.9840, 14.3049,
-14.8950

■ 208.3190, 19.5627,
-21.3278

■ 213.8130, 20.3052,
-26.1460

Harmonies

Analogous

The Analogous color harmony consists of three colors that are next to each other on the color wheel.



154.6280, -19.0436, 41.5452



152.8190, -25.5468, 27.3457



150.2140, -24.7555, 6.8283

Triad

The Triadic color harmony groups three colors that are evenly spaced from another and form a triangle on the color wheel.



152.8190, -25.5468, 27.3457



137.3880, 14.5987, -62.6073



156.6810, 17.4123, 15.1888

Complementary

The Complementary color scheme is a pair of colors which are on the opposite of each other on the color wheel.



152.8190, -25.5468, 27.3457



132.1810, 25.5468, -27.3457

Split Complementary

Split-complementary colors differ from the complementary color scheme. The scheme consists of three colors, the original color and two neighbors of the complement color.



153.3830, 25.9402, -13.4909



152.8190, -25.5468, 27.3457



137.7540, 26.2503, -66.4363

Square

The Square scheme is like the rectangle color scheme, but the four colors are evenly spaced on the color wheel.



152.8190, -25.5468, 27.3457



142.2800, -1.6170, -41.4646



145.6950, 29.2374, -44.4595



157.0120, 5.4171, 35.9465

Rectangle

The Rectangle color scheme consists of four colors that form a rectangle on the color wheel.



152.8190, -25.5468, 27.3457



148.0810, -19.7599, -8.8410



145.6950, 29.2374, -44.4595



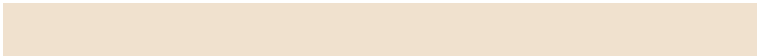
156.4240, 20.4970, 5.7672

Sweetspot

The Sweet Spot groups the original color and five complimentary colors.



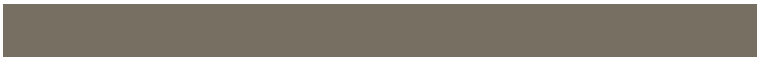
152.8190, -25.5468, 27.3457



227.3190, -10.5103, 11.1212



130.0350, 3.9267, 47.3273



112.3230, -6.5682, 6.7327



247.0000, 0.0000, 0.0000



120.0000, 0.0000, 0.0000

Same Dimension

The Same Dimension uses a secret algorithm to generate beautiful new colors.



152.8190, -25.5468, 27.3457



191.1340, -39.9991, 42.8555



173.3420, -35.6646, 5.8391



88.6260, -2.7736, 2.9590



97.1260, -47.8831, 51.6325



17.7640, -8.7577, 8.9770

Inverse Universe

The Inverse Universe completely reimagines the original color for something new.



132.1810, 25.5468, -27.3457



158.8660, 39.9991, -42.8555



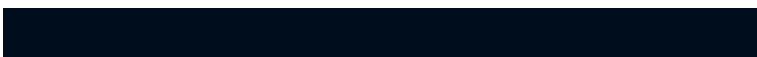
111.6580, 35.6646, -5.8391



86.3740, 2.7736, -2.9590



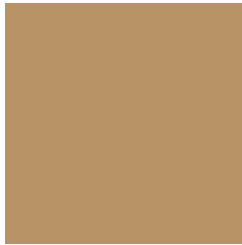
58.2870, 48.1725, -51.1177



10.8230, 8.4683, -9.4918

Previews

White Background



This preview shows how the YUV color 152.8190, -25.5468, 27.3457 looks on a white background.

Color Contrast Check

Large Text (above 18pt) WCAG AA × Fail

Any Text WCAG AA × Fail

Large Text (above 18pt) WCAG AAA × Fail

Any Text WCAG AAA × Fail

Black Background



This preview shows how the YUV color 152.8190, -25.5468, 27.3457 looks on a black background.

Color Contrast Check

Large Text (above 18pt) WCAG AA ✓ Pass

Any Text WCAG AA ✓ Pass

Large Text (above 18pt) WCAG AAA ✓ Pass

Any Text WCAG AAA ✓ Pass

If you want to check with other color combinations, try the [Color Contrast Checker](#).

YUV 152.8190, -25.5468, 27.3457

Background



This preview shows how black text looks on a background with the YUV color 152.8190, -25.5468, 27.3457.



This preview shows how white text looks on a background with the YUV color 152.8190, -25.5468, 27.3457.

27.3457.

Color Blindness Simulation

Color vision deficiency is a very complex topic, and I could not describe the different causes any better than Wikipedia does, so if you want to learn more, you should check out their [article about color blindness](#).

Dichromacy



Original Color

152.8190, -25.5468, 27.3457

Protanopia

151.3010, -23.3194, 12.8910

Deuteranopia

152.8190, -25.5468, 27.3457



Tritanopia

156.4920, -2.7076, 28.5095

Trichromacy



Original Color

152.8190, -25.5468, 27.3457

Protanomaly

152.1060, -24.2093, 18.3240

Deuteranomaly

152.8190, -25.5468, 27.3457

Tritanomaly

155.0160, -10.8539, 28.0500

Monochromacy



Original Color

152.8190, -25.5468, 27.3457

Achromatopsia

153.0000, 0.0000, 0.0000

Achromatomaly

152.9490, -9.3419, 9.6917

CSS Examples

Text

The CSS property to change the color of the text to YUV 152.8190, -25.5468, 27.3457 is called "color". The color property can be set on classes, ids or directly on the HTML element.

This example shows how text in the color `rgb(184, 147, 101)` looks like.

```
.text, #text, p{  
    color:rgb(184, 147, 101)  
}
```

If you want to add a text shadow in that color use the text-shadow property, you can generate a text shadow directly with our [CSS Text Shadow Generator](#).

Here you see how black text with a 4 pixel rgb(184, 147, 101) colored shadow looks like.

```
.shadow{ text-shadow: 4px 4px 2px rgb(184, 147, 101) }
```

Border

The CSS property to change the border of an element to YUV 152.8190, -25.5468, 27.3457 is called "border".

The border property can be set on classes, ids or directly on the HTML element.

This example shows the color as border, it can be applied via the CSS property "border" or "border-color".

```
.border, #border, table{ border:4px solid rgb(184, 147, 101) }
```


If only the border color should be changed use the property `border-color`.

```
.border{ border-color:rgb(184, 147, 101) }
```

If you want to add a box shadow in that color use:

Here you see how a box with a 4 pixel `rgb(184, 147, 101)` colored shadow looks like.

```
.boxshadow{ -moz-box-shadow:4px 4px 4px  
4px rgb(184, 147, 101); -webkit-box-  
shadow:4px 4px 4px 4px rgb(184, 147, 101);  
box-shadow:4px 4px 4px 4px rgb(184, 147,  
101) }
```

Background

The CSS property to change the background color of an element to YUV 152.8190, -25.5468, 27.3457 is called "background". The background property can be set on classes, ids or directly on the HTML element.

```
.background, #background, body{  
background: rgb(184, 147, 101) }
```

If only the background color should be changed can be used:

```
.background{ background-color: rgb(184,  
147, 101) }
```

This example shows the color as background, it is applied via the CSS property "background".

To optimize and compress your CSS code, you can use our [online CSS compressor and optimizer](#) based on csstidy. If you want to create a linear or radial gradient as background or border, check our [CSS Gradient Generator](#).

Hey! You found this booklet interesting? Support Converting Colors with the new Membership Option!

The pro membership hides all ads, plus gives you double the colors in the color bucket, and more awesome pro features!

[Learn more, Memberships starting at \\$2.50/m!](#)

**Follow me
on Twitter!**

@ConvertingColor