

Converting Colors

YUV(153.1500, -20.7799,
38.4565)

Have a look what the booklet for
YUV(153.1500, -20.7799, 38.4565)
contains.

YUV(153.1500, -20.7799, 38.4565)	3
<i>Conversions</i>	4
<i>Details</i>	6
<i>Harmonies</i>	12
<i>Previews</i>	24
<i>Color Blindness Simulation</i>	28
<i>CSS Examples</i>	31

Color

**YUV(153.1500, -20.7799,
38.4565)**

Conversions

Conversions Part 1

Format	Color
Hex	C58B6F
RGB	197, 139, 111
RGB Percent	77%, 55%, 44%
CMY	0.2275, 0.4549, 0.5647
CMYK	0.00, 0.29, 0.44, 0.23
HSL	20°, 43%, 60%
HSV	20°, 44%, 77%
XYZ	35.1278, 31.4833, 19.2644
YIQ	153.1500, 43.5560, 3.5880

Conversions

Conversions Part 2

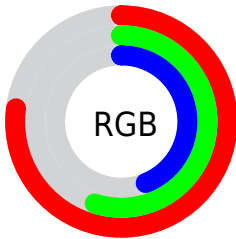
Format	Color
RYB	197, 153, 111
Decimal	12946287
CIELab	62.91, 18.67, 23.78
CIELCh	63, 30.235, 51.858
Yxy	31.4833, 0.4091, 0.3666
Android (android.graphics.Color)	4291136367 (0xFFC58B6F)
YUV	153.1500, -20.7799, 38.4565
Hunter-Lab	56.1099, 13.5581, 18.9208

Details

The YUV color **153.1500, -20.7799, 38.4565** is a dark color, and the websafe version is hex **CC9966**. A complement of this color would be **154.8500, 20.7800, -38.4564**, and the grayscale version is **153.0000, 0.0000, 0.0000**.

A 20% lighter version of the original color is **208.1180, -22.2432, 41.1155**, and **101.5840, -19.0219, 34.5678** is the 20% darker color. If you saturate the color by 10%, you get **143.2390, -25.7538, 47.1484**, and if you desaturate by 10%, it is **163.0610, -15.8061, 29.7645**.

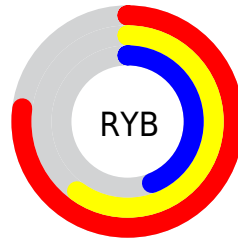
Distribution



Red (77%)

Green (55%)

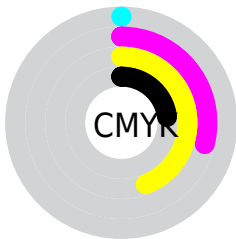
Blue (44%)



Red (77%)

Yellow (60%)

Blue (44%)

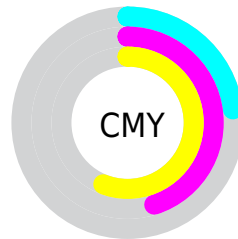


Cyan (0%)

Magenta (29%)

Yellow (44%)

Black (23%)



Cyan (23%)

Magenta (45%)

Yellow (56%)

Brightness & Saturation Gradients

These gradients show how the YUV color 153.1500, -20.7799, 38.4565 changes by changing the brightness by 10 percent. The first figure shows a shift by +10% for each color and the second figure -10%.

Similar to the brightness gradients but the following saturation gradients show a change of the YUV color 153.1500, -20.7799, 38.4565 by changing the saturation by 10% instead.

■ 153.1500,
-20.7799, 38.4565

■ 153.1500,
-20.7799, 38.4565

■ 255.0000, 0.0000,
0.0000

■ 126.6660,
-20.0483, 37.1269

■ 208.1180,
-22.2432, 41.1155

■ 101.5840,
-19.0219, 34.5678

■ 227.6320,
-18.5526, 24.0017

■ 76.9150, -17.7061,
32.5235

■ 247.2600,
-14.4252, 6.7880

■ 52.8330, -16.6797,
29.9645

■ 253.9740, -3.9312,
0.8998

■ 30.8650, -15.2164,
27.3054

■ 11.3620, -5.6015,
23.3615

■ 0.0000, 0.0000,

0.0000

■ 153.1500,
-20.7799, 38.4565

■ 153.1500,
-20.7799, 38.4565

■ 143.2390,
-25.7538, 47.1484

■ 163.0610,
-15.8061, 29.7645

■ 132.8550,
-30.0015, 56.2552

■ 173.4450,
-11.5584, 20.6577

■ 122.9440,
-34.9754, 64.9471

■ 183.3560, -6.5845,
11.9658

■ 113.0330,
-39.9493, 73.6391

■ 193.2670, -1.6106,
3.2738

■ 103.1220,
-44.9231, 82.3310

■ 203.1780, 3.3632,
-5.4181

■ 96.4710, -47.5602,
88.1639

■ 213.5620, 7.6109,
-14.5249

■ 223.4730, 12.5848,
-23.2168

■ 231.7880, 11.4435,
-30.5091

■ 237.6580, 8.5496,
-35.6571

Harmonies

Analogous

The Analogous color harmony consists of three colors that are next to each other on the color wheel.



154.9410, -10.3239, 44.7787



153.1500, -20.7799, 38.4565



151.0850, -25.6779, 22.7275

Triad

The Triadic color harmony groups three colors that are evenly spaced from another and form a triangle on the color wheel.



153.1500, -20.7799, 38.4565



139.8710, 2.0356, -46.3679



153.2590, 24.0293, -7.2431

Complementary

The Complementary color scheme is a pair of colors which are on the opposite of each other on the color wheel.



153.1500, -20.7799, 38.4565



154.8500, 20.7800, -38.4564

Split Complementary

Split-complementary colors differ from the complementary color scheme. The scheme consists of three colors, the original color and two neighbors of the complement color.



146.6250, 28.7789, -37.3821



153.1500, -20.7799, 38.4565



136.0610, 17.2249, -64.9515

Square

The Square scheme is like the rectangle color scheme, but the four colors are evenly spaced on the color wheel.



153.1500, -20.7799, 38.4565



145.0130, -13.3174, -21.9364



138.7160, 27.2550, -62.0179



156.3180, 14.6332, 19.8921

Rectangle

The Rectangle color scheme consists of four colors that form a rectangle on the color wheel.



153.1500, -20.7799, 38.4565



149.5240, -24.9083, 9.1875



138.7160, 27.2550, -62.0179



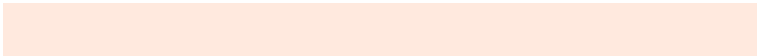
151.4750, 26.3878, -17.0796

Sweetspot

The Sweet Spot groups the original color and five complimentary colors.



153.1500, -20.7799, 38.4565



238.3240, -8.0477, 14.6249



143.4400, 13.0941, 46.9721



117.3880, -5.1213, 9.3067



0.0000, 0.0000, 0.0000



128.0000, 0.0000, 0.0000

Same Dimension

The Same Dimension uses a secret algorithm to generate beautiful new colors.



153.1500, -20.7799, 38.4565



187.5950, -32.3383, 59.1142



177.8040, -32.9344, 16.8349



94.4520, -2.1948, 3.9886



79.8480, -39.3651, 72.9243



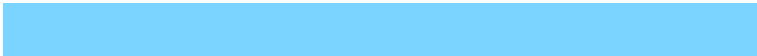
17.8080, -8.7793, 15.9544

Inverse Universe

The Inverse Universe completely reimagines the original color for something new.



154.8500, 20.7800, -38.4564



189.9920, 32.0489, -59.6290



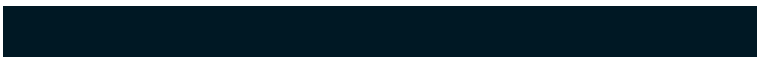
130.1960, 32.9344, -16.8349



94.5480, 2.1948, -3.9886



83.1520, 39.3651, -72.9243



18.1920, 8.7793, -15.9544

Previews

White Background



This preview shows how the YUV color 153.1500, -20.7799, 38.4565 looks on a white background.

Color Contrast Check

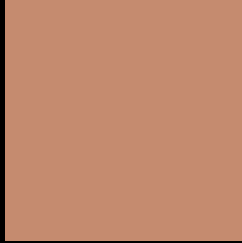
Large Text (above 18pt) WCAG AA × Fail

Any Text WCAG AA × Fail

Large Text (above 18pt) WCAG AAA × Fail

Any Text WCAG AAA × Fail

Black Background



This preview shows how the YUV color 153.1500, -20.7799, 38.4565 looks on a black background.

Color Contrast Check

Large Text (above 18pt) WCAG AA ✓ Pass

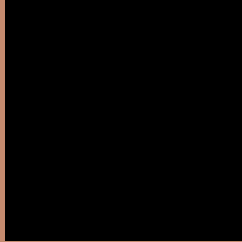
Any Text WCAG AA ✓ Pass

Large Text (above 18pt) WCAG AAA ✓ Pass

Any Text WCAG AAA ✓ Pass

If you want to check with other color combinations, try the [Color Contrast Checker](#).

YUV 153.1500, -20.7799, 38.4565 Background



This preview shows how black text looks on a background with the YUV color 153.1500, -20.7799, 38.4565.



This preview shows how white text looks on a background with the YUV color 153.1500, -20.7799, 38.4565.

Color Blindness Simulation

Color vision deficiency is a very complex topic, and I could not describe the different causes any better than Wikipedia does, so if you want to learn more, you should check out their [article about color blindness](#).

Dichromacy



Original Color

153.1500, -20.7799, 38.4565

Protanopia

151.2990, -16.9094, 10.2618

Deuteranopia

152.3610, -20.8840, 25.1164



Tritanopia

154.9880, -4.9241, 39.4755

Trichromacy



Original Color

153.1500, -20.7799, 38.4565

Protanomaly

151.7240, -18.1049, 20.4131

Deuteranomaly

152.3940, -20.9002, 30.3495

Tritanomaly

154.4950, -10.5970, 39.0309

Monochromacy



Original Color

153.1500, -20.7799, 38.4565

Achromatopsia

153.0000, 0.0000, 0.0000

Achromatomaly

153.1390, -7.4635, 13.9101

CSS Examples

Text

The CSS property to change the color of the text to YUV 153.1500, -20.7799, 38.4565 is called "color". The color property can be set on classes, ids or directly on the HTML element.

This example shows how text in the color `rgb(197, 139, 111)` looks like.

```
.text, #text, p{  
    color:rgb(197, 139, 111)  
}
```

If you want to add a text shadow in that color use the text-shadow property, you can generate a text shadow directly with our [CSS Text Shadow Generator](#).

Here you see how black text with a 4 pixel rgb(197, 139, 111) colored shadow looks like.

```
.shadow{ text-shadow: 4px 4px 2px rgb(197, 139, 111) }
```

Border

The CSS property to change the border of an element to YUV 153.1500, -20.7799, 38.4565 is called "border".

The border property can be set on classes, ids or directly on the HTML element.

This example shows the color as border, it can be applied via the CSS property "border" or "border-color".

```
.border, #border, table{ border:4px solid rgb(197, 139, 111) }
```


If only the border color should be changed use the property `border-color`.

```
.border{ border-color:rgb(197, 139, 111) }
```

If you want to add a box shadow in that color use:

Here you see how a box with a 4 pixel `rgb(197, 139, 111)` colored shadow looks like.

```
.boxshadow{ -moz-box-shadow:4px 4px 4px  
4px rgb(197, 139, 111); -webkit-box-  
shadow:4px 4px 4px 4px rgb(197, 139, 111);  
box-shadow:4px 4px 4px 4px rgb(197, 139,  
111) }
```

Background

The CSS property to change the background color of an element to YUV 153.1500, -20.7799, 38.4565 is called "background". The background property can be set on classes, ids or directly on the HTML element.

```
.background, #background, body{  
background: rgb(197, 139, 111) }
```

If only the background color should be changed can be used:

```
.background{ background-color: rgb(197,  
139, 111) }
```

This example shows the color as background, it is applied via the CSS property "background".

To optimize and compress your CSS code, you can use our [online CSS compressor and optimizer](#) based on csstidy. If you want to create a linear or radial gradient as background or border, check our [CSS Gradient Generator](#).

Hey! You found this booklet interesting? Support Converting Colors with the new Membership Option!

The pro membership hides all ads, plus gives you double the colors in the color bucket, and more awesome pro features!

[Learn more, Memberships starting at \\$2.50/m!](#)

**Follow me
on Twitter!**

@ConvertingColor