

Converting Colors

YUV(153.1510, -8.9484,
23.5466)

Have a look what the booklet for
YUV(153.1510, -8.9484, 23.5466)
contains.

YUV(153.1510, -8.9484, 23.5466)	3
<i>Conversions</i>	4
<i>Details</i>	6
<i>Harmonies</i>	12
<i>Previews</i>	24
<i>Color Blindness Simulation</i>	28
<i>CSS Examples</i>	31

Color

**YUV(153.1510, -8.9484,
23.5466)**

Conversions

Conversions Part 1

Format	Color
Hex	B48F87
RGB	180, 143, 135
RGB Percent	71%, 56%, 53%
CMY	0.2941, 0.4392, 0.4706
CMYK	0.00, 0.21, 0.25, 0.29
HSL	11°, 23%, 62%
HSV	11°, 25%, 71%
XYZ	33.0180, 31.0975, 27.1838
YIQ	153.1510, 24.6200, 5.3560

Conversions

Conversions Part 2

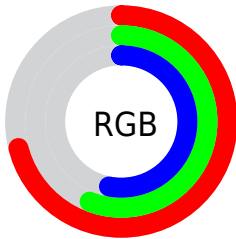
Format	Color
R_{YB}	180, 145, 135
Decimal	11833223
CIE _{Lab}	62.59, 12.74, 9.56
CIE _{LCh}	63, 15.928, 36.905
Yxy	31.0975, 0.3616, 0.3406
Android (android.graphics.Color)	4290023303 (0xFFB48F87)
YUV	153.1510, -8.9484, 23.5466
Hunter-Lab	55.7651, 8.0993, 10.1335

Details

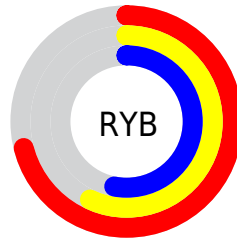
The YUV color $153.1510, -8.9484, 23.5466$ is a light color, and the websafe version is hex $CC9999$. A complement of this color would be $161.8490, 8.9484, -23.5466$, and the grayscale version is $153.0000, 0.0000, 0.0000$.

A 20% lighter version of the original color is $207.6350, -9.6801, 24.8761$, and $101.9550, -8.3588, 21.0875$ is the 20% darker color. If you saturate the color by 10%, you get $142.2940, -12.4699, 33.0682$, and if you desaturate by 10%, it is $164.0080, -5.4269, 14.0250$.

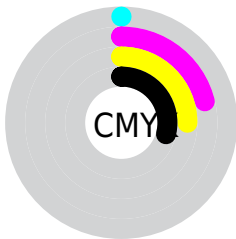
Distribution



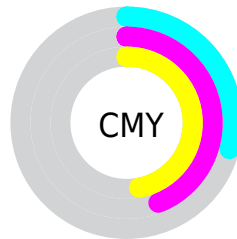
- Red (71%)
- Green (56%)
- Blue (53%)



- Red (71%)
- Yellow (57%)
- Blue (53%)



- Cyan (0%)
- Magenta (21%)
- Yellow (25%)
- Black (29%)



- Cyan (29%)
- Magenta (44%)
- Yellow (47%)

Brightness & Saturation Gradients

These gradients show how the YUV color 153.1510, -8.9484, 23.5466 changes by changing the brightness by 10 percent. The first figure shows a shift by +10% for each color and the second figure -10%.

Similar to the brightness gradients but the following saturation gradients show a change of the YUV color 153.1510, -8.9484, 23.5466 by changing the saturation by 10% instead.

■ 153.1510, -8.9484,
23.5466

■ 153.1510, -8.9484,
23.5466

255.0000, 0.0000,
0.0000

■ 126.9660, -8.3642,
22.8318

■ 207.6350, -9.6801,
24.8761

■ 101.9550, -8.3588,
21.0875

■ 232.9440, -8.3534,
19.3431

■ 77.7700, -7.7746,
20.3727

■ 253.1590, -4.5154,
1.6146

■ 54.2860, -7.0430,
19.0432

■ 32.5030, -6.1640,
17.0989

■ 9.5680, -4.7170,
19.6729

■ 0.0000, 0.0000,

0.0000

■ 153.1510, -8.9484,
23.5466

■ 153.1510, -8.9484,
23.5466

■ 142.2940,
-12.4699, 33.0682

■ 164.0080, -5.4269,
14.0250

■ 131.4370,
-15.9914, 42.5898

■ 174.8650, -1.9054,
4.5034

■ 121.1670,
-19.8023, 51.5965

■ 185.1350, 1.9054,
-4.5034

■ 110.3100,
-23.3238, 61.1181

■ 195.9920, 5.4269,
-14.0250

■ 99.4530, -26.8453,
70.6397

■ 206.8490, 8.9484,
-23.5466

■ 88.5960, -30.3668,
80.1613

■ 217.7060, 12.4699,
-33.0682

■ 77.7390, -33.8883,
89.6829

■ 227.8790, 13.3707,
-41.9899

■ 72.6040, -35.7938,
94.1863

■ 232.5750, 11.0555,
-46.1083

Harmonies

Analogous

The Analogous color harmony consists of three colors that are next to each other on the color wheel.



153.5730, -2.2545, 23.1765



153.1510, -8.9484, 23.5466



152.0810, -12.8579, 17.4690

Triad

The Triadic color harmony groups three colors that are evenly spaced from another and form a triangle on the color wheel.



153.1510, -8.9484, 23.5466



147.5650, -3.7295, -17.1585



150.9030, 13.8518, -9.5619

Complementary

The Complementary color scheme is a pair of colors which are on the opposite of each other on the color wheel.



153.1510, -8.9484, 23.5466



161.8490, 8.9484, -23.5466

Split Complementary

Split-complementary colors differ from the complementary color scheme. The scheme consists of three colors, the original color and two neighbors of the complement color.



148.5270, 14.0372, -22.3872



153.1510, -8.9484, 23.5466



146.1600, 3.8651, -26.4503

Square

The Square scheme is like the rectangle color scheme, but the four colors are evenly spaced on the color wheel.



153.1510, -8.9484, 23.5466



149.0350, -9.8773, -5.2927



146.5710, 10.5645, -28.5648



153.3670, 10.1721, 4.0631

Rectangle

The Rectangle color scheme consists of four colors that form a rectangle on the color wheel.



153.1510, -8.9484, 23.5466



151.1080, -13.8572, 11.3063



146.5710, 10.5645, -28.5648



150.2830, 14.1575, -14.2802

Sweetspot

The Sweet Spot groups the original color and five complimentary colors.



153.1510, -8.9484, 23.5466



223.4420, -3.6689, 10.1364



152.7870, 9.9650, 23.8658



110.4630, -2.2003, 5.7329



245.0000, 0.0000, 0.0000



117.0000, 0.0000, 0.0000

Same Dimension

The Same Dimension uses a secret algorithm to generate beautiful new colors.



153.1510, -8.9484, 23.5466



192.8600, -14.2280, 36.9568



166.0650, -15.3150, 12.2210



83.8650, -1.9054, 4.5034



61.5960, -30.3668, 80.1613



10.7090, -5.2795, 13.4102

Inverse Universe

The Inverse Universe completely reimagines the original color for something new.



161.8490, 8.9484, -23.5466



206.1400, 14.2280, -36.9568



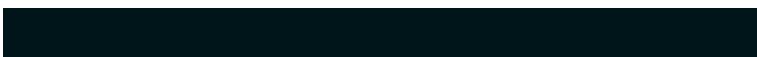
148.9350, 15.3150, -12.2210



85.7220, 1.6161, -5.0182



91.4040, 30.3668, -80.1613



15.2910, 5.2795, -13.4102

Previews

White Background



This preview shows how the YUV color 153.1510, -8.9484, 23.5466 looks on a white background.

Color Contrast Check

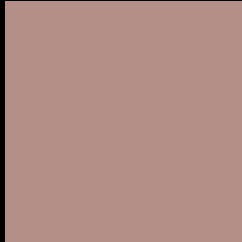
Large Text (above 18pt) WCAG AA × Fail

Any Text WCAG AA × Fail

Large Text (above 18pt) WCAG AAA × Fail

Any Text WCAG AAA × Fail

Black Background



This preview shows how the YUV color 153.1510, -8.9484, 23.5466 looks on a black background.

Color Contrast Check

Large Text (above 18pt) WCAG AA ✓ Pass

Any Text WCAG AA ✓ Pass

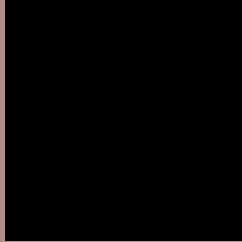
Large Text (above 18pt) WCAG AAA ✓ Pass

Any Text WCAG AAA ✓ Pass

If you want to check with other color combinations, try the [Color Contrast Checker](#).

YUV 153.1510, -8.9484, 23.5466

Background



This preview shows how black text looks on a background with the YUV color 153.1510, -8.9484, 23.5466.



This preview shows how white text looks on a background with the YUV color 153.1510, -8.9484,

23.5466.

Color Blindness Simulation

Color vision deficiency is a very complex topic, and I could not describe the different causes any better than Wikipedia does, so if you want to learn more, you should check out their [article about color blindness](#).

Dichromacy



Original Color

153.1510, -8.9484, 23.5466

Protanopia

151.4260, -6.1260, 4.8884

Deuteranopia

152.4060, -9.0742, 17.1839



Tritanopia

154.3990, -1.6757, 24.2061

Trichromacy



Original Color

153.1510, -8.9484, 23.5466

Protanomaly

151.9430, -6.8739, 11.4510

Deuteranomaly

152.7160, -9.2270, 19.5431

Tritanomaly

154.0030, -4.4385, 23.6764

Monochromacy



Original Color

153.1510, -8.9484, 23.5466

Achromatopsia

153.0000, 0.0000, 0.0000

Achromatomaly

152.8440, -3.3741, 8.9068

CSS Examples

Text

The CSS property to change the color of the text to YUV 153.1510, -8.9484, 23.5466 is called "color". The color property can be set on classes, ids or directly on the HTML element.

This example shows how text in the color `rgb(180, 143, 135)` looks like.

```
.text, #text, p{  
    color:rgb(180, 143, 135)  
}
```

If you want to add a text shadow in that color use the text-shadow property, you can generate a text shadow directly with our [CSS Text Shadow Generator](#).

Here you see how black text with a 4 pixel rgb(180, 143, 135) colored shadow looks like.

```
.shadow{ text-shadow: 4px 4px 2px rgb(180, 143, 135) }
```

Border

The CSS property to change the border of an element to YUV 153.1510, -8.9484, 23.5466 is called "border". The border property can be set on classes, ids or directly on the HTML element.

This example shows the color as border, it can be applied via the CSS property "border" or "border-color".

```
.border, #border, table{ border:4px solid rgb(180, 143, 135) }
```


If only the border color should be changed use the property `border-color`.

```
.border{ border-color:rgb(180, 143, 135) }
```

If you want to add a box shadow in that color use:

Here you see how a box with a 4 pixel `rgb(180, 143, 135)` colored shadow looks like.

```
.boxshadow{ -moz-box-shadow:4px 4px 4px  
4px rgb(180, 143, 135); -webkit-box-  
shadow:4px 4px 4px 4px rgb(180, 143, 135);  
box-shadow:4px 4px 4px 4px rgb(180, 143,  
135) }
```

Background

The CSS property to change the background color of an element to YUV 153.1510, -8.9484, 23.5466 is called "background". The background property can be set on classes, ids or directly on the HTML element.

```
.background, #background, body{  
background: rgb(180, 143, 135) }
```

If only the background color should be changed can be used:

```
.background{ background-color: rgb(180,  
143, 135) }
```

This example shows the color as background, it is applied via the CSS property "background".

To optimize and compress your CSS code, you can use our [online CSS compressor and optimizer](#) based on csstidy. If you want to create a linear or radial gradient as background or border, check our [CSS Gradient Generator](#).

Hey! You found this booklet interesting? Support Converting Colors with the new Membership Option!

The pro membership hides all ads, plus gives you double the colors in the color bucket, and more awesome pro features!

[Learn more, Memberships starting at \\$2.50/m!](#)

**Follow me
on Twitter!**

@ConvertingColor