

Converting Colors

YUV(153.2200, -3.5595,
21.7321)

Have a look what the booklet for
YUV(153.2200, -3.5595, 21.7321)
contains.

YUV(153.2200, -3.5595, 21.7321)	3
<i>Conversions</i>	4
<i>Details</i>	6
<i>Harmonies</i>	12
<i>Previews</i>	24
<i>Color Blindness Simulation</i>	28
<i>CSS Examples</i>	31

Color

**YUV(153.2200, -3.5595,
21.7321)**

Conversions

Conversions Part 1

Format	Color
Hex	B28E92
RGB	178, 142, 146
RGB Percent	70%, 56%, 57%
CMY	0.3020, 0.4431, 0.4275
CMYK	0.00, 0.20, 0.18, 0.30
HSL	353°, 19%, 63%
HSV	353°, 20%, 70%
XYZ	33.2214, 30.8863, 31.4048
YIQ	153.2200, 20.1720, 8.8760

Conversions

Conversions Part 2

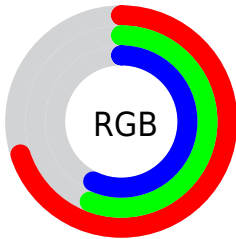
Format	Color
RYB	178, 142, 146
Decimal	11701906
CIELab	62.41, 14.23, 3.05
CIELCh	62, 14.548, 12.101
Yxy	30.8863, 0.3478, 0.3234
Android (android.graphics.Color)	4289891986 (0xFFB28E92)
YUV	153.2200, -3.5595, 21.7321
Hunter-Lab	55.5754, 9.4451, 5.3990

Details

The YUV color $153.2200, -3.5595, 21.7321$ is a light color, and the websafe version is hex $CC9999$. A complement of this color would be $166.7800, 3.5595, -21.7321$, and the grayscale version is $153.0000, 0.0000, 0.0000$.

A 20% lighter version of the original color is $207.8180, -3.8543, 22.9616$, and $102.3230, -3.1172, 19.8877$ is the 20% darker color. If you saturate the color by 10%, you get $140.8300, -5.3392, 32.5981$, and if you desaturate by 10%, it is $165.6100, -1.7797, 10.8660$.

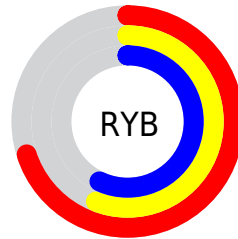
Distribution



Red (70%)

Green (56%)

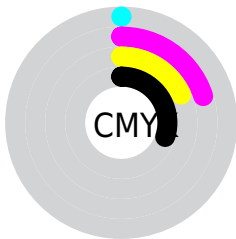
Blue (57%)



Red (70%)

Yellow (56%)

Blue (57%)

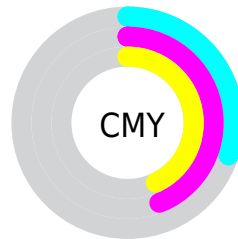


Cyan (0%)

Magenta (20%)

Yellow (18%)

Black (30%)



Cyan (30%)

Magenta (44%)

Yellow (43%)

Brightness & Saturation Gradients

These gradients show how the YUV color 153.2200, -3.5595, 21.7321 changes by changing the brightness by 10 percent. The first figure shows a shift by +10% for each color and the second figure -10%.

Similar to the brightness gradients but the following saturation gradients show a change of the YUV color 153.2200, -3.5595, 21.7321 by changing the saturation by 10% instead.

■ 153.2200, -3.5595,
21.7321

■ 153.2200, -3.5595,
21.7321

255.0000, 0.0000,
0.0000

■ 126.9210, -3.4121,
21.1173

■ 207.8180, -3.8543,
22.9616

■ 102.3230, -3.1172,
19.8877

■ 233.7250, -2.8224,
18.6582

■ 77.7250, -2.8224,
18.6582

■ 253.2390, 0.8682,
1.5444

■ 54.5400, -2.2382,
17.9434

■ 32.9420, -1.9434,
16.7139

■ 10.0950, -3.9908,
20.0877

■ 0.0000, 0.0000,

0.0000

■ 153.2200, -3.5595,
21.7321

■ 153.2200, -3.5595,
21.7321

■ 140.8300, -5.3392,
32.5981

■ 165.6100, -1.7797,
10.8660

■ 128.4400, -7.1189,
43.4641

■ 178.0000, 0.0000,
0.0000

■ 116.7510, -8.7512,
53.7154

■ 189.6890, 1.6323,
-10.2513

■ 104.3610,
-10.5310, 64.5814

■ 202.0790, 3.4121,
-21.1173

■ 91.9710, -12.3107,
75.4474

■ 214.4690, 5.1918,
-31.9833

■ 79.5810, -14.0904,
86.3135

■ 226.8590, 6.9715,
-42.8493

■ 67.1910, -15.8702,
97.1795

■ 231.9770, 11.3503,
-47.3378

■ 55.5020, -17.5025,
107.4307

Harmonies

Analogous

The Analogous color harmony consists of three colors that are next to each other on the color wheel.



153.4950, 2.7140, 16.2289



153.2200, -3.5595, 21.7321



152.4280, -9.0850, 20.6726

Triad

The Triadic color harmony groups three colors that are evenly spaced from another and form a triangle on the color wheel.



153.2200, -3.5595, 21.7321



148.1920, -7.9827, -6.3074



148.6200, 13.0053, -18.0837

Complementary

The Complementary color scheme is a pair of colors which are on the opposite of each other on the color wheel.



153.2200, -3.5595, 21.7321



166.7800, 3.5595, -21.7321

Split Complementary

Split-complementary colors differ from the complementary color scheme. The scheme consists of three colors, the original color and two neighbors of the complement color.



146.5930, 10.5537, -25.0761



153.2200, -3.5595, 21.7321



147.0210, -1.9824, -17.5584

Square

The Square scheme is like the rectangle color scheme, but the four colors are evenly spaced on the color wheel.



153.2200, -3.5595, 21.7321



150.2320, -11.9464, 5.0585



145.8120, 5.0227, -24.3911



150.8710, 12.3886, -6.9029

Rectangle

The Rectangle color scheme consists of four colors that form a rectangle on the color wheel.



153.2200, -3.5595, 21.7321



151.8360, -11.2581, 17.6838



145.8120, 5.0227, -24.3911



147.7830, 12.4320, -20.8577

Sweetspot

The Sweet Spot groups the original color and five complimentary colors.



153.2200, -3.5595, 21.7321



222.4140, -1.1901, 8.4069



155.6720, 11.0077, 16.0737



111.5060, -0.7425, 4.8182



245.0000, 0.0000, 0.0000



117.0000, 0.0000, 0.0000

Same Dimension

The Same Dimension uses a secret algorithm to generate beautiful new colors.



153.2200, -3.5595, 21.7321



193.5420, -5.1972, 33.7277



160.9820, -9.3581, 14.9248



82.8050, -0.8899, 5.4330



47.6850, -15.1277, 92.3613



8.1160, -2.5222, 15.6843

Inverse Universe

The Inverse Universe completely reimagines the original color for something new.



153.2200, -3.5595, 21.7321



193.5420, -5.1972, 33.7277



159.0180, 9.3581, -14.9248



82.8050, -0.8899, 5.4330



47.6850, -15.1277, 92.3613



8.1160, -2.5222, 15.6843

Previews

White Background



This preview shows how the YUV color 153.2200, -3.5595, 21.7321 looks on a white background.

Color Contrast Check

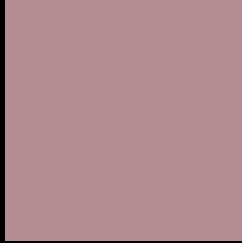
Large Text (above 18pt) WCAG AA × Fail

Any Text WCAG AA × Fail

Large Text (above 18pt) WCAG AAA × Fail

Any Text WCAG AAA × Fail

Black Background



This preview shows how the YUV color 153.2200, -3.5595, 21.7321 looks on a black background.

Color Contrast Check

Large Text (above 18pt) WCAG AA ✓ Pass

Any Text WCAG AA ✓ Pass

Large Text (above 18pt) WCAG AAA ✓ Pass

Any Text WCAG AAA ✓ Pass

If you want to check with other color combinations, try the [Color Contrast Checker](#).

YUV 153.2200, -3.5595, 21.7321

Background



This preview shows how black text looks on a background with the YUV color 153.2200, -3.5595, 21.7321.



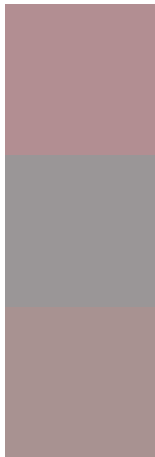
This preview shows how white text looks on a background with the YUV color 153.2200, -3.5595,

21.7321.

Color Blindness Simulation

Color vision deficiency is a very complex topic, and I could not describe the different causes any better than Wikipedia does, so if you want to learn more, you should check out their [article about color blindness](#).

Dichromacy



Original Color

153.2200, -3.5595, 21.7321

Protanopia

151.3100, -0.1528, 2.3591

Deuteranopia

152.4640, -3.6798, 13.6251



Tritanopia

153.6160, -0.7967, 22.2618

Trichromacy



Original Color

153.2200, -3.5595, 21.7321

Protanomaly

152.0120, -1.4849, 9.6365

Deuteranomaly

153.0730, -3.9800, 16.5990

Tritanomaly

153.3880, -1.6703, 22.4617

Monochromacy



Original Color

153.2200, -3.5595, 21.7321

Achromatopsia

153.0000, 0.0000, 0.0000

Achromatomaly

153.0010, -1.4795, 7.8921

CSS Examples

Text

The CSS property to change the color of the text to YUV 153.2200, -3.5595, 21.7321 is called "color". The color property can be set on classes, ids or directly on the HTML element.

This example shows how text in the color `rgb(178, 142, 146)` looks like.

```
.text, #text, p{  
    color:rgb(178, 142, 146)  
}
```

If you want to add a text shadow in that color use the text-shadow property, you can generate a text shadow directly with our [CSS Text Shadow Generator](#).

Here you see how black text with a 4 pixel rgb(178, 142, 146) colored shadow looks like.

```
.shadow{ text-shadow: 4px 4px 2px rgb(178, 142, 146) }
```

Border

The CSS property to change the border of an element to YUV 153.2200, -3.5595, 21.7321 is called "border". The border property can be set on classes, ids or directly on the HTML element.

This example shows the color as border, it can be applied via the CSS property "border" or "border-color".

```
.border, #border, table{ border:4px solid rgb(178, 142, 146) }
```


If only the border color should be changed use the property `border-color`.

```
.border{ border-color:rgb(178, 142, 146) }
```

If you want to add a box shadow in that color use:

Here you see how a box with a 4 pixel `rgb(178, 142, 146)` colored shadow looks like.

```
.boxshadow{ -moz-box-shadow:4px 4px 4px  
4px rgb(178, 142, 146); -webkit-box-  
shadow:4px 4px 4px 4px rgb(178, 142, 146);  
box-shadow:4px 4px 4px 4px rgb(178, 142,  
146) }
```

Background

The CSS property to change the background color of an element to YUV 153.2200, -3.5595, 21.7321 is called "background". The background property can be set on classes, ids or directly on the HTML element.

```
.background, #background, body{  
background: rgb(178, 142, 146) }
```

If only the background color should be changed can be used:

```
.background{ background-color: rgb(178,  
142, 146) }
```

This example shows the color as background, it is applied via the CSS property "background".

To optimize and compress your CSS code, you can use our [online CSS compressor and optimizer](#) based on csstidy. If you want to create a linear or radial gradient as background or border, check our [CSS Gradient Generator](#).

Hey! You found this booklet interesting? Support Converting Colors with the new Membership Option!

The pro membership hides all ads, plus gives you double the colors in the color bucket, and more awesome pro features!

[Learn more, Memberships starting at \\$2.50/m!](#)

**Follow me
on Twitter!**

@ConvertingColor