

Converting Colors

YUV(153.4840, -0.2386,
76.7515)

Have a look what the booklet for
YUV(153.4840, -0.2386, 76.7515)
contains.

YUV(153.4840, -0.2386, 76.7515)	3
<i>Conversions</i>	4
<i>Details</i>	6
<i>Harmonies</i>	12
<i>Previews</i>	24
<i>Color Blindness Simulation</i>	28
<i>CSS Examples</i>	31

Color

**YUV(153.4840, -0.2386,
76.7515)**

Conversions

Conversions Part 1

Format	Color
Hex	F16D99
RGB	241, 109, 153
RGB Percent	95%, 43%, 60%
CMY	0.0549, 0.5725, 0.4000
CMYK	0.00, 0.55, 0.37, 0.05
HSL	340°, 82%, 69%
HSV	340°, 55%, 95%
XYZ	47.4940, 31.9380, 33.7984
YIQ	153.4840, 64.5480, 41.6680

Conversions

Conversions Part 2

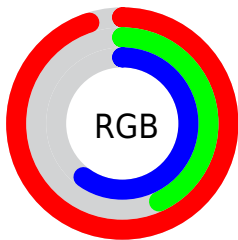
Format	Color
R _Y B	241, 109, 153
Decimal	15822233
CIE Lab	63.29, 54.99, 1.29
CIE LCh	63, 55.009, 1.346
Yxy	31.9380, 0.4194, 0.2821
Android (android.graphics.Color)	4294012313 (0xFFFF16D99)
YUV	153.4840, -0.2386, 76.7515
Hunter-Lab	56.5137, 51.1123, 4.1008

Details

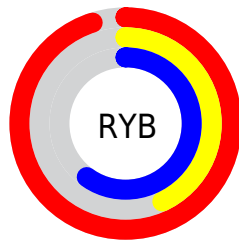
The YUV color $153.4840, -0.2386, 76.7515$ is a light color, and the websafe version is hex $FF6699$. A complement of this color would be $196.5160, 0.2386, -76.7515$, and the grayscale version is $153.0000, 0.0000, 0.0000$.

A 20% lighter version of the original color is $196.6980, 5.0789, 51.1309$, and $96.8580, 2.5350, 73.7925$ is the 20% darker color. If you saturate the color by 10%, you get $137.5720, -0.2820, 90.7064$, and if you desaturate by 10%, it is $169.3960, -0.1952, 62.7967$.

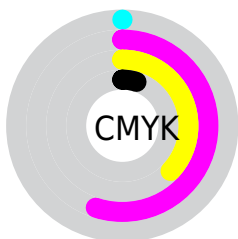
Distribution



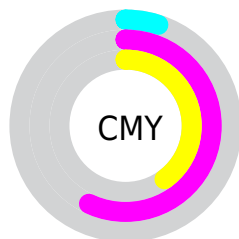
- Red (95%)
- Green (43%)
- Blue (60%)



- Red (95%)
- Yellow (43%)
- Blue (60%)



- Cyan (0%)
- Magenta (55%)
- Yellow (37%)
- Black (5%)



- Cyan (5%)
- Magenta (57%)
- Yellow (40%)

Brightness & Saturation Gradients

These gradients show how the YUV color 153.4840, -0.2386, 76.7515 changes by changing the brightness by 10 percent. The first figure shows a shift by +10% for each color and the second figure -10%.

Similar to the brightness gradients but the following saturation gradients show a change of the YUV color 153.4840, -0.2386, 76.7515 by changing the saturation by 10% instead.

153.4840, -0.2386,
76.7515

153.4840, -0.2386,
76.7515

255.0000, 0.0000,
0.0000

125.1140, 0.9298,
75.3220

196.6980, 5.0789,
51.1309

96.8580, 2.5350,
73.7925

216.3260, 9.2063,
33.9171

65.4930, 6.1660,
75.8666

235.6290, 9.5499,
16.9884

43.1610, 6.3296,
70.0188

252.6520, 1.1576,
2.0592

32.2810, 0.8475,
55.0046

21.7000, -4.7821,
40.6051

11.7750, -5.3121,

23.8763

■ 0.0000, 0.0000,
0.0000

■ 153.4840, -0.2386,
76.7515

■ 153.4840, -0.2386,
76.7515

■ 137.5720, -0.2820,
90.7064

■ 169.3960, -0.1952,
62.7967

■ 121.6600, -0.3254,
104.6612

■ 185.3080, -0.1518,
48.8419

■ 105.7480, -0.3688,
118.6160

■ 201.2200, -0.1085,
34.8871

■ 89.8360, -0.4121,
132.5708

■ 217.1320, -0.0651,
20.9322

■ 81.1790, -0.5812,
140.1630

■ 233.0440, -0.0217,
6.9774

■ 249.5430, -0.2677,
-7.4922

■ 250.8140, 2.0637,
-8.6069

Harmonies

Analogous

The Analogous color harmony consists of three colors that are next to each other on the color wheel.



157.6390, 21.3770, 50.3056



153.4840, -0.2386, 76.7515



151.8220, -23.0832, 77.3321

Triad

The Triadic color harmony groups three colors that are evenly spaced from another and form a triangle on the color wheel.



153.4840, -0.2386, 76.7515



142.4230, -38.6625, -12.6490



126.9220, 54.7615, -111.3106

Complementary

The Complementary color scheme is a pair of colors which are on the opposite of each other on the color wheel.



153.4840, -0.2386, 76.7515



196.5160, 0.2386, -76.7515

Split Complementary

Split-complementary colors differ from the complementary color scheme. The scheme consists of three colors, the original color and two neighbors of the complement color.



126.4540, 37.7372, -110.9002



153.4840, -0.2386, 76.7515



130.4500, -13.0398, -64.4156

Square

The Square scheme is like the rectangle color scheme, but the four colors are evenly spaced on the color wheel.



153.4840, -0.2386, 76.7515



147.3310, -48.9702, 26.8967



121.4550, 16.0447, -106.5160



134.8150, 57.2792, -78.7678

Rectangle

The Rectangle color scheme consists of four colors that form a rectangle on the color wheel.



153.4840, -0.2386, 76.7515



151.3140, -36.1438, 66.3766



121.4550, 16.0447, -106.5160



127.6570, 49.9621, -111.9552

Sweetspot

The Sweet Spot groups the original color and five complimentary colors.



153.4840, -0.2386, 76.7515



227.8550, 0.0715, 23.8062



150.3600, 44.6855, 40.9033



111.3870, -0.1908, 14.5696



0.0000, 0.0000, 0.0000



128.0000, 0.0000, 0.0000

Same Dimension

The Same Dimension uses a secret algorithm to generate beautiful new colors.



153.4840, -0.2386, 76.7515



143.6160, -0.3037, 97.6838



161.3820, -25.8243, 69.8250



112.0440, -0.0217, 6.9774



61.9700, -0.4782, 107.0203



18.9100, 0.0444, 32.5279

Inverse Universe

The Inverse Universe completely reimagines the original color for something new.



153.4840, -0.2386, 76.7515



143.6160, -0.3037, 97.6838



188.6180, 25.8243, -69.8250



112.0440, -0.0217, 6.9774



61.9700, -0.4782, 107.0203



18.9100, 0.0444, 32.5279

Previews

White Background



This preview shows how the YUV color 153.4840, -0.2386, 76.7515 looks on a white background.

Color Contrast Check

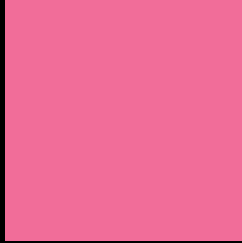
Large Text (above 18pt) WCAG AA × Fail

Any Text WCAG AA × Fail

Large Text (above 18pt) WCAG AAA × Fail

Any Text WCAG AAA × Fail

Black Background



This preview shows how the YUV color 153.4840, -0.2386, 76.7515 looks on a black background.

Color Contrast Check

Large Text (above 18pt) WCAG AA ✓ Pass

Any Text WCAG AA ✓ Pass

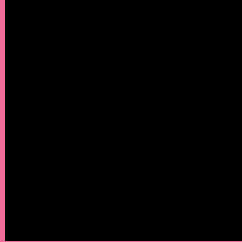
Large Text (above 18pt) WCAG AAA ✓ Pass

Any Text WCAG AAA ✓ Pass

If you want to check with other color combinations, try the [Color Contrast Checker](#).

YUV 153.4840, -0.2386, 76.7515

Background



This preview shows how black text looks on a background with the YUV color 153.4840, -0.2386, 76.7515.



This preview shows how white text looks on a background with the YUV color 153.4840, -0.2386,

Color Blindness Simulation

Color vision deficiency is a very complex topic, and I could not describe the different causes any better than Wikipedia does, so if you want to learn more, you should check out their [article about color blindness](#).

Dichromacy



Original Color

153.4840, -0.2386, 76.7515

Protanopia

154.1810, 12.2358, -4.5437

Deuteranopia

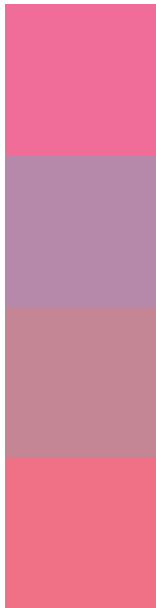
154.7630, -3.8272, 14.2398



Tritanopia

152.9880, -14.7841, 75.4325

Trichromacy



Original Color

153.4840, -0.2386, 76.7515

Protanomaly

153.6300, 8.0704, 24.8805

Deuteranomaly

154.2480, -2.5873, 36.6165

Tritanomaly

153.3670, -9.5479, 75.9771

Monochromacy



Original Color

153.4840, -0.2386, 76.7515

Achromatopsia

153.0000, 0.0000, 0.0000

Achromatomaly

153.1760, -0.0868, 27.9096

CSS Examples

Text

The CSS property to change the color of the text to YUV 153.4840, -0.2386, 76.7515 is called "color". The color property can be set on classes, ids or directly on the HTML element.

This example shows how text in the color `rgb(241, 109, 153)` looks like.

```
.text, #text, p{  
    color:rgb(241, 109, 153)  
}
```

If you want to add a text shadow in that color use the text-shadow property, you can generate a text shadow directly with our [CSS Text Shadow Generator](#).

Here you see how black text with a 4 pixel rgb(241, 109, 153) colored shadow looks like.

```
.shadow{ text-shadow: 4px 4px 2px rgb(241, 109, 153) }
```

Border

The CSS property to change the border of an element to YUV 153.4840, -0.2386, 76.7515 is called "border". The border property can be set on classes, ids or directly on the HTML element.

This example shows the color as border, it can be applied via the CSS property "border" or "border-color".

```
.border, #border, table{ border:4px solid rgb(241, 109, 153) }
```


If only the border color should be changed use the property `border-color`.

```
.border{ border-color:rgb(241, 109, 153) }
```

If you want to add a box shadow in that color use:

Here you see how a box with a 4 pixel `rgb(241, 109, 153)` colored shadow looks like.

```
.boxshadow{ -moz-box-shadow:4px 4px 4px  
4px rgb(241, 109, 153); -webkit-box-  
shadow:4px 4px 4px 4px rgb(241, 109, 153);  
box-shadow:4px 4px 4px 4px rgb(241, 109,  
153) }
```

Background

The CSS property to change the background color of an element to YUV 153.4840, -0.2386, 76.7515 is called "background". The background property can be set on classes, ids or directly on the HTML element.

```
.background, #background, body{  
background: rgb(241, 109, 153) }
```

If only the background color should be changed can be used:

```
.background{ background-color: rgb(241,  
109, 153) }
```

This example shows the color as background, it is applied via the CSS property "background".

To optimize and compress your CSS code, you can use our [online CSS compressor and optimizer](#) based on csstidy. If you want to create a linear or radial gradient as background or border, check our [CSS Gradient Generator](#).

Hey! You found this booklet interesting? Support Converting Colors with the new Membership Option!

The pro membership hides all ads, plus gives you double the colors in the color bucket, and more awesome pro features!

[Learn more, Memberships starting at \\$2.50/m!](#)

**Follow me
on Twitter!**

@ConvertingColor