

Converting Colors

YUV(153.4850, -32.2841,
41.6707)

Have a look what the booklet for
YUV(153.4850, -32.2841, 41.6707)
contains.

YUV(153.4850, -32.2841, 41.6707)	3
<i>Conversions</i>	4
<i>Details</i>	6
<i>Harmonies</i>	12
<i>Previews</i>	24
<i>Color Blindness Simulation</i>	28
<i>CSS Examples</i>	31

Color

**YUV(153.4850, -32.2841,
41.6707)**

Conversions

Conversions Part 1

Format	Color
Hex	C98E58
RGB	201, 142, 88
RGB Percent	79%, 56%, 35%
CMY	0.2118, 0.4431, 0.6549
CMYK	0.00, 0.29, 0.56, 0.21
HSL	29°, 51%, 57%
HSV	29°, 56%, 79%
XYZ	35.5218, 32.4681, 13.6273
YIQ	153.4850, 52.4980, -4.2860

Conversions

Conversions Part 2

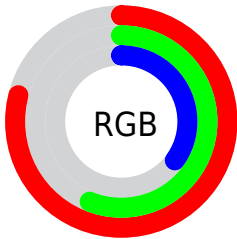
Format	Color
R_{YB}	201, 191, 88
Decimal	13209176
CIE _{Lab}	63.73, 16.50, 37.42
CIE _{LCh}	64, 40.897, 66.206
Yxy	32.4681, 0.4352, 0.3978
Android (android.graphics.Color)	4291399256 (0xFFC98E58)
YUV	153.4850, -32.2841, 41.6707
Hunter-Lab	56.9808, 11.5606, 25.7070

Details

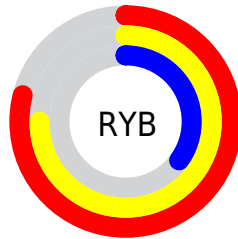
The YUV color **153.4850, -32.2841, 41.6707** is a dark color, and the websafe version is hex **CC9966**. The color can be described as middle muted orange. A complement of this color would be **135.5150, 32.2841, -41.6707**, and the grayscale version is **154.0000, 0.0000, 0.0000**.

A 20% lighter version of the original color is **207.1430, -33.5945, 41.9706**, and **101.6200, -30.3787, 37.1673** is the 20% darker color. If you saturate the color by 10%, you get **145.3350, -38.1262, 48.8182**, and if you desaturate by 10%, it is **161.6350, -26.4421, 34.5231**.

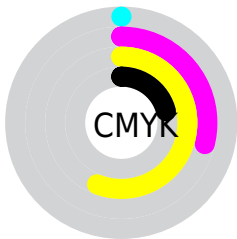
Distribution



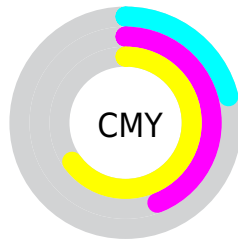
- Red (79%)
- Green (56%)
- Blue (35%)



- Red (79%)
- Yellow (75%)
- Blue (35%)



- Cyan (0%)
- Magenta (29%)
- Yellow (56%)
- Black (21%)



- Cyan (21%)
- Magenta (44%)
- Yellow (65%)

Brightness & Saturation Gradients

These gradients show how the YUV color 153.4850, -32.2841, 41.6707 changes by changing the brightness by 10 percent. The first figure shows a shift by +10% for each color and the second figure -10%.

Similar to the brightness gradients but the following saturation gradients show a change of the YUV color 153.4850, -32.2841, 41.6707 by changing the saturation by 10% instead.

■ 153.4850,
-32.2841, 41.6707

■ 153.4850,
-32.2841, 41.6707

■ 255.0000, 0.0000,
0.0000

■ 126.8160,
-30.9683, 39.6264

■ 207.1430,
-33.5945, 41.9706

■ 101.6200,
-30.3787, 37.1673

■ 226.6570,
-29.9039, 24.8568

■ 76.4240, -29.7890,
34.7082

■ 246.1710,
-26.2133, 7.7430

■ 53.0260, -26.1418,
31.5492

■ 251.1240,
-14.8511, 3.3993

■ 32.6260, -16.0846,
25.7610

■ 254.4300, -2.1840,
0.4999

■ 11.3620, -5.6015,
23.3615

■ 0.0000, 0.0000,

0.0000

■ 153.4850,
-32.2841, 41.6707

■ 153.4850,
-32.2841, 41.6707

■ 145.3350,
-38.1262, 48.8182

■ 161.6350,
-26.4421, 34.5231

■ 136.5980,
-43.6788, 56.4806

■ 170.3720,
-20.8894, 26.8608

■ 128.4480,
-49.5209, 63.6281

■ 178.5220,
-15.0473, 19.7132

■ 119.7110,
-55.0735, 71.2905

■ 187.2590, -9.4947,
12.0509

■ 116.4510,
-57.4103, 74.1495

■ 195.5230, -3.2158,
4.8033

■ 204.2600, 2.3368,
-2.8590

■ 212.4100, 8.1789,
-10.0066

■ 221.1470, 13.7315,
-17.6689

■ 227.7010, 13.4584,
-23.4168

Harmonies

Analogous

The Analogous color harmony consists of three colors that are next to each other on the color wheel.



154.9720, -20.6922, 57.0296



153.4850, -32.2841, 41.6707



150.9350, -34.9710, 16.7200

Triad

The Triadic color harmony groups three colors that are evenly spaced from another and form a triangle on the color wheel.



153.4850, -32.2841, 41.6707



119.9050, 20.2598, -105.1567



157.8680, 27.1801, 8.8858

Complementary

The Complementary color scheme is a pair of colors which are on the opposite of each other on the color wheel.



153.4850, -32.2841, 41.6707



135.5150, 32.2841, -41.6707

Split Complementary

Split-complementary colors differ from the complementary color scheme. The scheme consists of three colors, the original color and two neighbors of the complement color.



150.3400, 37.7934, -35.3782



153.4850, -32.2841, 41.6707



123.3080, 35.8372, -108.1411

Square

The Square scheme is like the rectangle color scheme, but the four colors are evenly spaced on the color wheel.



153.4850, -32.2841, 41.6707



139.6290, -7.7051, -48.7866



123.1200, 47.7618, -106.2222



158.9940, 12.8210, 41.2243

Rectangle

The Rectangle color scheme consists of four colors that form a rectangle on the color wheel.



153.4850, -32.2841, 41.6707



148.3670, -30.2539, -2.9529



123.1200, 47.7618, -106.2222



156.5180, 31.2966, -4.8393

Sweetspot

The Sweet Spot groups the original color and five complimentary colors.



153.4850, -32.2841, 41.6707



236.5970, -12.1263, 16.1394



128.6270, 9.5509, 63.4711



116.8180, -7.3053, 9.8066



0.0000, 0.0000, 0.0000



128.0000, 0.0000, 0.0000

Same Dimension

The Same Dimension uses a secret algorithm to generate beautiful new colors.



153.4850, -32.2841, 41.6707



183.2630, -48.9367, 62.9133



185.7700, -48.2006, 13.3567



95.0390, -2.4842, 3.4738



94.5230, -46.5998, 60.0543



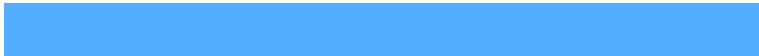
20.7430, -10.2263, 13.3804

Inverse Universe

The Inverse Universe completely reimagines the original color for something new.



135.5150, 32.2841, -41.6707



155.7370, 48.9367, -62.9133



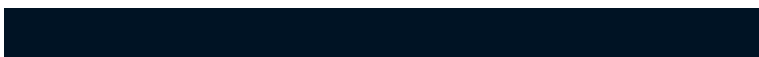
103.2300, 48.2006, -13.3567



93.9610, 2.4842, -3.4738



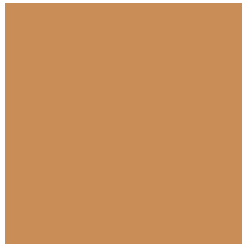
68.4770, 46.5998, -60.0543



15.2570, 10.2263, -13.3804

Previews

White Background



This preview shows how the YUV color 153.4850, -32.2841, 41.6707 looks on a white background.

Color Contrast Check

Large Text (above 18pt) WCAG AA × Fail

Any Text WCAG AA × Fail

Large Text (above 18pt) WCAG AAA × Fail

Any Text WCAG AAA × Fail

Black Background



This preview shows how the YUV color 153.4850, -32.2841, 41.6707 looks on a black background.

Color Contrast Check

Large Text (above 18pt) WCAG AA ✓ Pass

Any Text WCAG AA ✓ Pass

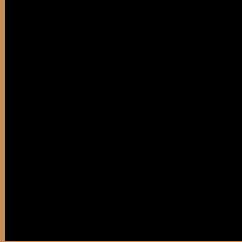
Large Text (above 18pt) WCAG AAA ✓ Pass

Any Text WCAG AAA ✓ Pass

If you want to check with other color combinations, try the [Color Contrast Checker](#).

YUV 153.4850, -32.2841, 41.6707

Background



This preview shows how black text looks on a background with the YUV color 153.4850, -32.2841, 41.6707.



This preview shows how white text looks on a background with the YUV color 153.4850, -32.2841, 41.6707.

Color Blindness Simulation

Color vision deficiency is a very complex topic, and I could not describe the different causes any better than Wikipedia does, so if you want to learn more, you should check out their [article about color blindness](#).

Dichromacy



Original Color

153.4850, -32.2841, 41.6707

Protanopia

152.1180, -29.1452, 14.8055

Deuteranopia

153.3050, -32.6884, 31.3045



Tritanopia

157.0700, -5.9505, 42.0346

Trichromacy



Original Color

153.4850, -32.2841, 41.6707

Protanomaly

152.5430, -30.3407, 24.9568

Deuteranomaly

153.3270, -32.6992, 34.7932

Tritanomaly

156.1380, -15.8440, 41.9750

Monochromacy



Original Color

153.4850, -32.2841, 41.6707

Achromatopsia

153.0000, 0.0000, 0.0000

Achromatomaly

152.9990, -11.8315, 14.9099

CSS Examples

Text

The CSS property to change the color of the text to YUV 153.4850, -32.2841, 41.6707 is called "color". The color property can be set on classes, ids or directly on the HTML element.

This example shows how text in the color `rgb(201, 142, 88)` looks like.

```
.text, #text, p{  
    color:rgb(201, 142, 88)  
}
```

If you want to add a text shadow in that color use the text-shadow property, you can generate a text shadow directly with our [CSS Text Shadow Generator](#).

Here you see how black text with a 4 pixel rgb(201, 142, 88) colored shadow looks like.

```
.shadow{ text-shadow: 4px 4px 2px rgb(201, 142, 88) }
```

Border

The CSS property to change the border of an element to YUV 153.4850, -32.2841, 41.6707 is called "border".

The border property can be set on classes, ids or directly on the HTML element.

This example shows the color as border, it can be applied via the CSS property "border" or "border-color".

```
.border, #border, table{ border:4px solid rgb(201, 142, 88) }
```


If only the border color should be changed use the property border-color.

```
.border{ border-color:rgb(201, 142, 88) }
```

If you want to add a box shadow in that color use:

Here you see how a box with a 4 pixel rgb(201, 142, 88) colored shadow looks like.

```
.boxshadow{ -moz-box-shadow:4px 4px 4px  
4px rgb(201, 142, 88); -webkit-box-  
shadow:4px 4px 4px 4px rgb(201, 142, 88);  
box-shadow:4px 4px 4px 4px rgb(201, 142,  
88) }
```

Background

The CSS property to change the background color of an element to YUV 153.4850, -32.2841, 41.6707 is called "background". The background property can be set on classes, ids or directly on the HTML element.

```
.background, #background, body{  
background: rgb(201, 142, 88) }
```

If only the background color should be changed can be used:

```
.background{ background-color: rgb(201,  
142, 88) }
```

This example shows the color as background, it is applied via the CSS property "background".

To optimize and compress your CSS code, you can use our [online CSS compressor and optimizer](#) based on csstidy. If you want to create a linear or radial gradient as background or border, check our [CSS Gradient Generator](#).

Hey! You found this booklet interesting? Support Converting Colors with the new Membership Option!

The pro membership hides all ads, plus gives you double the colors in the color bucket, and more awesome pro features!

[Learn more, Memberships starting at \\$2.50/m!](#)

**Follow me
on Twitter!**

@ConvertingColor