

Converting Colors

YUV(153.5800, -22.9639,
38.9563)

Have a look what the booklet for
YUV(153.5800, -22.9639, 38.9563)
contains.

YUV(153.5800, -22.9639, 38.9563)	3
<i>Conversions</i>	4
<i>Details</i>	6
<i>Harmonies</i>	12
<i>Previews</i>	24
<i>Color Blindness Simulation</i>	28
<i>CSS Examples</i>	31

Color

**YUV(153.5800, -22.9639,
38.9563)**

Conversions

Conversions Part 1

Format	Color
Hex	C68C6B
RGB	198, 140, 107
RGB Percent	78%, 55%, 42%
CMY	0.2235, 0.4510, 0.5804
CMYK	0.00, 0.29, 0.46, 0.22
HSL	22°, 44%, 60%
HSV	22°, 46%, 78%
XYZ	35.3206, 31.8235, 18.1909
YIQ	153.5800, 45.1610, 2.0330

Conversions

Conversions Part 2

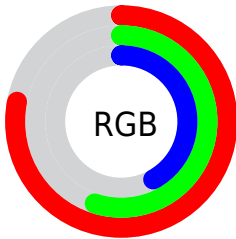
Format	Color
RYB	198, 159, 107
Decimal	13012075
CIELab	63.20, 18.11, 26.39
CIElCh	63, 32.008, 55.547
Yxy	31.8235, 0.4139, 0.3729
Android (android.graphics.Color)	4291202155 (0xFFC68C6B)
YUV	153.5800, -22.9639, 38.9563
Hunter-Lab	56.4123, 13.0401, 20.3698

Details

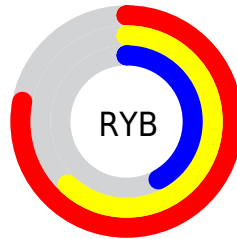
The YUV color **153.5800, -22.9639, 38.9563** is a dark color, and the websafe version is hex **CC9966**. A complement of this color would be **151.4200, 22.9639, -38.9563**, and the grayscale version is **154.0000, 0.0000, 0.0000**.

A 20% lighter version of the original color is **208.2490, -24.2798, 41.0006**, and **102.0140, -21.2059, 35.0677** is the 20% darker color. If you saturate the color by 10%, you get **143.6690, -27.9378, 47.6483**, and if you desaturate by 10%, it is **163.4910, -17.9901, 30.2644**.

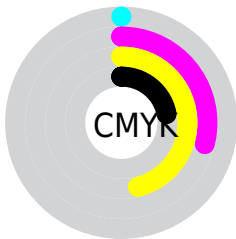
Distribution



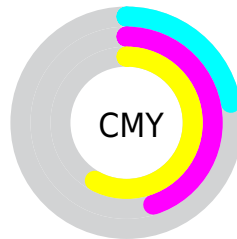
- Red (78%)
- Green (55%)
- Blue (42%)



- Red (78%)
- Yellow (62%)
- Blue (42%)



- Cyan (0%)
- Magenta (29%)
- Yellow (46%)
- Black (22%)



- Cyan (22%)
- Magenta (45%)
- Yellow (58%)

Brightness & Saturation Gradients

These gradients show how the YUV color 153.5800, -22.9639, 38.9563 changes by changing the brightness by 10 percent. The first figure shows a shift by +10% for each color and the second figure -10%.

Similar to the brightness gradients but the following saturation gradients show a change of the YUV color 153.5800, -22.9639, 38.9563 by changing the saturation by 10% instead.

■ 153.5800,
-22.9639, 38.9563

■ 153.5800,
-22.9639, 38.9563

255.0000, 0.0000,
0.0000

■ 127.2100,
-21.7955, 37.5268

■ 208.2490,
-24.2798, 41.0006

■ 102.0140,
-21.2059, 35.0677

■ 227.7630,
-20.5892, 23.8868

■ 77.0460, -19.7427,
32.4087

■ 247.3910,
-16.4618, 6.6731

■ 53.2630, -18.8637,
30.4643

■ 253.5180, -5.6784,
1.2997

■ 31.7510, -15.6532,
27.4054

■ 11.3620, -5.6015,
23.3615

■ 0.0000, 0.0000,

0.0000

■ 153.5800,
-22.9639, 38.9563

■ 153.5800,
-22.9639, 38.9563

■ 143.6690,
-27.9378, 47.6483

■ 163.4910,
-17.9901, 30.2644

■ 134.3450,
-33.2011, 55.8254

■ 172.8150,
-12.7268, 22.0872

■ 124.5480,
-37.7382, 64.4174

■ 182.6120, -8.1897,
13.4953

■ 115.2240,
-43.0014, 72.5946

■ 191.9360, -2.9264,
5.3181

■ 105.3130,
-47.9753, 81.2865

■ 201.8470, 2.0474,
-3.3738

■ 101.4660,
-50.0227, 84.6603

■ 211.7580, 7.0213,
-12.0658

■ 221.0820, 12.2846,
-20.2429

■ 229.7390, 12.4537,
-27.8351

■ 237.3700, 8.6916,
-34.5275

Harmonies

Analogous

The Analogous color harmony consists of three colors that are next to each other on the color wheel.



155.3820, -12.5133, 47.0230



153.5800, -22.9639, 38.9563



151.6180, -27.4197, 21.3830

Triad

The Triadic color harmony groups three colors that are evenly spaced from another and form a triangle on the color wheel.



153.5800, -22.9639, 38.9563



139.1090, 4.3833, -52.7156



154.6940, 24.3079, -3.2396

Complementary

The Complementary color scheme is a pair of colors which are on the opposite of each other on the color wheel.



153.5800, -22.9639, 38.9563



151.4200, 22.9639, -38.9563

Split Complementary

Split-complementary colors differ from the complementary color scheme. The scheme consists of three colors, the original color and two neighbors of the complement color.



147.6790, 30.2313, -36.5525



153.5800, -22.9639, 38.9563



133.7440, 21.3252, -73.4435

Square

The Square scheme is like the rectangle color scheme, but the four colors are evenly spaced on the color wheel.



153.5800, -22.9639, 38.9563



144.6210, -12.1382, -26.8546



137.7910, 30.1760, -65.5917



156.9380, 14.3276, 24.6104

Rectangle

The Rectangle color scheme consists of four colors that form a rectangle on the color wheel.



153.5800, -22.9639, 38.9563



149.5730, -25.9185, 6.5135



137.7910, 30.1760, -65.5917



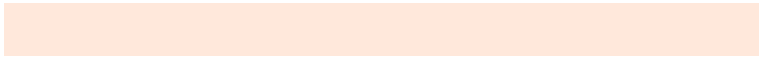
153.3120, 26.9612, -14.3056

Sweetspot

The Sweet Spot groups the original color and five complimentary colors.



153.5800, -22.9639, 38.9563



237.3950, -9.0687, 15.4396



140.9350, 12.3570, 50.0460



117.2740, -5.5581, 9.4067



0.0000, 0.0000, 0.0000



128.0000, 0.0000, 0.0000

Same Dimension

The Same Dimension uses a secret algorithm to generate beautiful new colors.



153.5800, -22.9639, 38.9563



186.7970, -35.3959, 59.8140



179.4080, -35.6971, 16.3052



94.4520, -2.1948, 3.9886



83.3700, -41.1014, 69.8355



18.3950, -9.0687, 15.4396

Inverse Universe

The Inverse Universe completely reimagines the original color for something new.



151.4200, 22.9639, -38.9563



183.2030, 35.3959, -59.8140



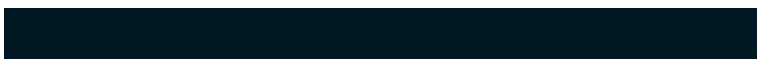
125.5920, 35.6971, -16.3052



94.5480, 2.1948, -3.9886



79.6300, 41.1014, -69.8355



17.6050, 9.0687, -15.4396

Previews

White Background



This preview shows how the YUV color 153.5800, -22.9639, 38.9563 looks on a white background.

Color Contrast Check

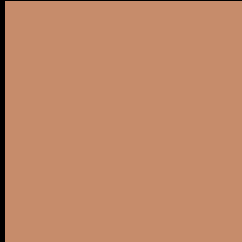
Large Text (above 18pt) WCAG AA × Fail

Any Text WCAG AA × Fail

Large Text (above 18pt) WCAG AAA × Fail

Any Text WCAG AAA × Fail

Black Background



This preview shows how the YUV color 153.5800, -22.9639, 38.9563 looks on a black background.

Color Contrast Check

Large Text (above 18pt) WCAG AA ✓ Pass

Any Text WCAG AA ✓ Pass

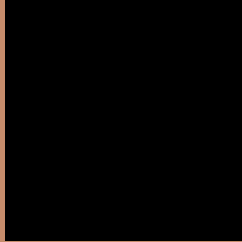
Large Text (above 18pt) WCAG AAA ✓ Pass

Any Text WCAG AAA ✓ Pass

If you want to check with other color combinations, try the [Color Contrast Checker](#).

YUV 153.5800, -22.9639, 38.9563

Background



This preview shows how black text looks on a background with the YUV color 153.5800, -22.9639, 38.9563.



This preview shows how white text looks on a background with the YUV color 153.5800, -22.9639,

38.9563.

Color Blindness Simulation

Color vision deficiency is a very complex topic, and I could not describe the different causes any better than Wikipedia does, so if you want to learn more, you should check out their [article about color blindness](#).

Dichromacy



Original Color

153.5800, -22.9639, 38.9563

Protanopia

152.0280, -19.2408, 11.3764

Deuteranopia

153.0900, -23.2154, 26.2311



Tritanopia

155.8740, -5.3609, 39.5755

Trichromacy



Original Color

153.5800, -22.9639, 38.9563

Protanomaly

152.4530, -20.4363, 21.5277

Deuteranomaly

152.8240, -23.0842, 30.8494

Tritanomaly

155.1530, -11.9074, 39.3308

Monochromacy



Original Color

153.5800, -22.9639, 38.9563

Achromatopsia

154.0000, 0.0000, 0.0000

Achromatomaly

153.9110, -8.3371, 14.1101

CSS Examples

Text

The CSS property to change the color of the text to YUV 153.5800, -22.9639, 38.9563 is called "color". The color property can be set on classes, ids or directly on the HTML element.

This example shows how text in the color `rgb(198, 140, 107)` looks like.

```
.text, #text, p{  
    color:rgb(198, 140, 107)  
}
```

If you want to add a text shadow in that color use the text-shadow property, you can generate a text shadow directly with our [CSS Text Shadow Generator](#).

Here you see how black text with a 4 pixel rgb(198, 140, 107) colored shadow looks like.

```
.shadow{ text-shadow: 4px 4px 2px rgb(198, 140, 107) }
```

Border

The CSS property to change the border of an element to YUV 153.5800, -22.9639, 38.9563 is called "border".

The border property can be set on classes, ids or directly on the HTML element.

This example shows the color as border, it can be applied via the CSS property "border" or "border-color".

```
.border, #border, table{ border:4px solid rgb(198, 140, 107) }
```


If only the border color should be changed use the property `border-color`.

```
.border{ border-color:rgb(198, 140, 107) }
```

If you want to add a box shadow in that color use:

Here you see how a box with a 4 pixel `rgb(198, 140, 107)` colored shadow looks like.

```
.boxshadow{ -moz-box-shadow:4px 4px 4px  
4px rgb(198, 140, 107); -webkit-box-  
shadow:4px 4px 4px 4px rgb(198, 140, 107);  
box-shadow:4px 4px 4px 4px rgb(198, 140,  
107) }
```

Background

The CSS property to change the background color of an element to YUV 153.5800, -22.9639, 38.9563 is called "background". The background property can be set on classes, ids or directly on the HTML element.

```
.background, #background, body{  
background: rgb(198, 140, 107) }
```

If only the background color should be changed can be used:

```
.background{ background-color: rgb(198,  
140, 107) }
```

This example shows the color as background, it is applied via the CSS property "background".

To optimize and compress your CSS code, you can use our [online CSS compressor and optimizer](#) based on csstidy. If you want to create a linear or radial gradient as background or border, check our [CSS Gradient Generator](#).

Hey! You found this booklet interesting? Support Converting Colors with the new Membership Option!

The pro membership hides all ads, plus gives you double the colors in the color bucket, and more awesome pro features!

[Learn more, Memberships starting at \\$2.50/m!](#)

**Follow me
on Twitter!**

@ConvertingColor