

# Converting Colors

YUV(154.0040, -9.3690,  
18.4135)

Have a look what the booklet for  
YUV(154.0040, -9.3690, 18.4135)  
contains.

<b>YUV(154.0040, -9.3690, 18.4135)</b> .....	3
<b><i>Conversions</i></b> .....	4
<b><i>Details</i></b> .....	6
<b><i>Harmonies</i></b> .....	12
<b><i>Previews</i></b> .....	24
<b><i>Color Blindness Simulation</i></b> .....	28
<b><i>CSS Examples</i></b> .....	31

# Color

**YUV(154.0040, -9.3690,  
18.4135)**

# Conversions

## Conversions Part 1

Format	Color
Hex	AF9387
RGB	175, 147, 135
RGB Percent	69%, 58%, 53%
CMY	0.3137, 0.4235, 0.4706
CMYK	0.00, 0.16, 0.23, 0.31
HSL	18°, 20%, 61%
HSV	18°, 23%, 69%
XYZ	32.4861, 31.7307, 27.3341
YIQ	154.0040, 20.5400, 2.2040

# Conversions

## Conversions Part 2

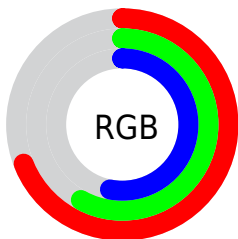
<b>Format</b>	<b>Color</b>
<b>RYB</b>	175, 152, 135
Decimal	11506567
CIELab	63.12, 8.55, 10.25
CIELCh	63, 13.348, 50.141
Yxy	31.7307, 0.3548, 0.3466
Android (android.graphics.Color)	4289696647 (0xFFAF9387)
YUV	154.0040, -9.3690, 18.4135
Hunter-Lab	56.3300, 4.3654, 10.6605

# Details

The YUV color **154.0040, -9.3690, 18.4135** is a light color, and the websafe version is hex **CC9999**. A complement of this color would be **155.9960, 9.3690, -18.4135**, and the grayscale version is **154.0000, 0.0000, 0.0000**.

A 20% lighter version of the original color is **208.4880, -10.1006, 19.7430**, and **102.5200, -8.6374, 17.0840** is the 20% darker color. If you saturate the color by 10%, you get **145.0220, -13.3218, 26.2907**, and if you desaturate by 10%, it is **163.1000, -4.9793, 10.4363**.

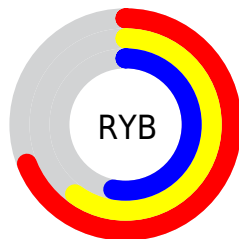
# Distribution



Red (69%)

Green (58%)

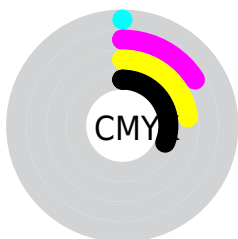
Blue (53%)



Red (69%)

Yellow (60%)

Blue (53%)

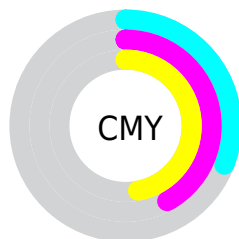


Cyan (0%)

Magenta (16%)

Yellow (23%)

Black (31%)



Cyan (31%)

Magenta (42%)

Yellow (47%)

# Brightness & Saturation Gradients

These gradients show how the YUV color 154.0040, -9.3690, 18.4135 changes by changing the brightness by 10 percent. The first figure shows a shift by +10% for each color and the second figure -10%.

Similar to the brightness gradients but the following saturation gradients show a change of the YUV color 154.0040, -9.3690, 18.4135 by changing the saturation by 10% instead.



■ 154.0040, -9.3690,  
18.4135

■ 154.0040, -9.3690,  
18.4135

255.0000, 0.0000,  
0.0000

■ 127.8190, -8.7848,  
17.6987

■ 208.4880,  
-10.1006, 19.7430

■ 102.5200, -8.6374,  
17.0840

■ 235.2920, -9.5110,  
17.2839

■ 78.9220, -8.3425,  
15.8544

■ 253.7460, -4.8048,  
1.0998

■ 55.4380, -7.6109,  
14.5249

■ 33.9540, -6.8793,  
13.1953

■ 11.0190, -5.4324,  
15.7693

■ 0.0000, 0.0000,

0.0000

154.0040, -9.3690,  
18.4135

154.0040, -9.3690,  
18.4135

145.0220,  
-13.3218, 26.2907

163.1000, -4.9793,  
10.4363

135.3390,  
-17.4221, 34.7827

172.0820, -1.0264,  
2.5591

126.3570,  
-21.3750, 42.6599

181.6510, 2.6371,  
-5.8329

117.2610,  
-25.7647, 50.6371

190.7470, 7.0267,  
-13.8101

108.1650,  
-30.1543, 58.6143

199.8430, 11.4164,  
-21.7873

98.5960, -33.8178,  
67.0063

209.4120, 15.0799,  
-30.1793

■ 89.5000, -38.2075,  
74.9835

■ 218.1660, 18.1592,  
-37.8566

■ 82.8490, -40.8446,  
80.8164

■ 225.2100, 14.6865,  
-44.0342

■ 231.0800, 11.7926,  
-49.1822

# Harmonies

## Analogous

The Analogous color harmony consists of three colors that are next to each other on the color wheel.



154.8670, -4.8644, 20.2876



154.0040, -9.3690, 18.4135



153.0910, -11.3839, 11.3212

# Triad

The Triadic color harmony groups three colors that are evenly spaced from another and form a triangle on the color wheel.



154.0040, -9.3690, 18.4135



149.0640, -0.5246, -18.4731



153.4370, 10.6306, -3.0142

# Complementary

The Complementary color scheme is a pair of colors which are on the opposite of each other on the color wheel.



154.0040, -9.3690, 18.4135



155.9960, 9.3690, -18.4135

# Split Complementary

Split-complementary colors differ from the complementary color scheme. The scheme consists of three colors, the original color and two neighbors of the complement color.



151.4140, 12.1209, -14.3951



154.0040, -9.3690, 18.4135



148.6380, 5.6015, -23.3615

# Square

The Square scheme is like the rectangle color scheme, but the four colors are evenly spaced on the color wheel.



154.0040, -9.3690, 18.4135



150.2240, -6.5194, -8.9664



149.6150, 10.5428, -21.5874



154.4770, 6.6668, 8.3517



# Rectangle

The Rectangle color scheme consists of four colors that form a rectangle on the color wheel.



154.0040, -9.3690, 18.4135



151.7590, -11.2202, 5.4734



149.6150, 10.5428, -21.5874



152.6430, 11.5150, -6.7029

# Sweetspot

The Sweet Spot groups the original color and five complimentary colors.



154.0040, -9.3690, 18.4135



218.7190, -3.8055, 7.2624



150.1520, 6.3341, 21.7917



109.8650, -1.9054, 4.5034



242.0000, 0.0000, 0.0000



115.0000, 0.0000, 0.0000



# Same Dimension

The Same Dimension uses a secret algorithm to generate beautiful new colors.



154.0040, -9.3690, 18.4135



194.8050, -14.2009, 28.2350



165.1570, -14.8674, 8.6323



82.4520, -2.1948, 3.9886



71.2650, -35.1336, 69.0506



10.9860, -5.4161, 10.5363



# Inverse Universe

The Inverse Universe completely reimagines the original color for something new.



155.9960, 9.3690, -18.4135



198.1950, 14.2009, -28.2350



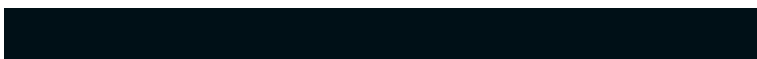
144.8430, 14.8674, -8.6323



82.5480, 2.1948, -3.9886



78.7350, 35.1336, -69.0506



12.0140, 5.4161, -10.5363



# Previews

## White Background



This preview shows how the YUV color 154.0040, -9.3690, 18.4135 looks on a white background.

## Color Contrast Check

Large Text (above 18pt) WCAG AA × Fail

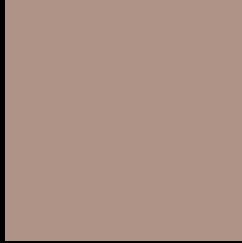
Any Text WCAG AA × Fail

Large Text (above 18pt) WCAG AAA × Fail

Any Text WCAG AAA × Fail



# Black Background



This preview shows how the YUV color 154.0040, -9.3690, 18.4135 looks on a black background.

## Color Contrast Check

Large Text (above 18pt) WCAG AA ✓ Pass

Any Text WCAG AA ✓ Pass

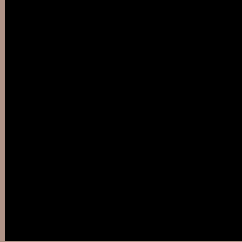
Large Text (above 18pt) WCAG AAA ✓ Pass

Any Text WCAG AAA ✓ Pass

If you want to check with other color combinations, try the [Color Contrast Checker](#).

# YUV 154.0040, -9.3690, 18.4135

## Background



This preview shows how black text looks on a background with the YUV color 154.0040, -9.3690, 18.4135.



This preview shows how white text looks on a background with the YUV color 154.0040, -9.3690,



# Color Blindness Simulation

Color vision deficiency is a very complex topic, and I could not describe the different causes any better than Wikipedia does, so if you want to learn more, you should check out their [article about color blindness](#).

## Dichromacy



### Original Color

154.0040, -9.3690, 18.4135

### Protanopia

152.4970, -7.1470, 5.7031

### Deuteranopia

153.7050, -9.2216, 17.7987



## Tritanopia

155.1210, -0.0597, 19.1879

# Trichromacy



## Original Color

154.0040, -9.3690, 18.4135

## Protanomaly

153.0030, -7.8895, 10.5214

## Deuteranomaly

153.7050, -9.2216, 17.7987

## Tritanomaly

154.6110, -3.2592, 18.7582

# Monochromacy



## Original Color

154.0040, -9.3690, 18.4135

## Achromatopsia

154.0000, 0.0000, 0.0000

## Achromatomaly

153.8330, -3.3687, 7.1625

# CSS Examples

## Text

The CSS property to change the color of the text to YUV 154.0040, -9.3690, 18.4135 is called "color". The color property can be set on classes, ids or directly on the HTML element.

This example shows how text in the color `rgb(175, 147, 135)` looks like.

```
.text, #text, p{  
    color:rgb(175, 147, 135)  
}
```

If you want to add a text shadow in that color use the text-shadow property, you can generate a text shadow directly with our [CSS Text Shadow Generator](#).

Here you see how black text with a 4 pixel rgb(175, 147, 135) colored shadow looks like.

```
.shadow{ text-shadow: 4px 4px 2px rgb(175, 147, 135) }
```

## Border

The CSS property to change the border of an element to YUV 154.0040, -9.3690, 18.4135 is called "border". The border property can be set on classes, ids or directly on the HTML element.

This example shows the color as border, it can be applied via the CSS property "border" or "border-color".

```
.border, #border, table{ border:4px solid rgb(175, 147, 135) }
```



If only the border color should be changed use the property `border-color`.

```
.border{ border-color:rgb(175, 147, 135) }
```

If you want to add a box shadow in that color use:

Here you see how a box with a 4 pixel `rgb(175, 147, 135)` colored shadow looks like.

```
.boxshadow{ -moz-box-shadow:4px 4px 4px  
4px rgb(175, 147, 135); -webkit-box-  
shadow:4px 4px 4px 4px rgb(175, 147, 135);  
box-shadow:4px 4px 4px 4px rgb(175, 147,  
135) }
```

# Background

The CSS property to change the background color of an element to YUV 154.0040, -9.3690, 18.4135 is called "background". The background property can be set on classes, ids or directly on the HTML element.

```
.background, #background, body{  
background: rgb(175, 147, 135) }
```

If only the background color should be changed can be used:

```
.background{ background-color: rgb(175,  
147, 135) }
```

This example shows the color as background, it is applied via the CSS property "background".

To optimize and compress your CSS code, you can use our [online CSS compressor and optimizer](#) based on csstidy. If you want to create a linear or radial gradient as background or border, check our [CSS Gradient Generator](#).

Hey! You found this booklet interesting? Support Converting Colors with the new Membership Option!

The pro membership hides all ads, plus gives you double the colors in the color bucket, and more awesome pro features!

**[Learn more, Memberships starting at \\$2.50/m!](#)**

**Follow me  
on Twitter!**

@ConvertingColor