

Converting Colors

YUV(154.2780, -11.4761,
40.9752)

Have a look what the booklet for
YUV(154.2780, -11.4761, 40.9752)
contains.

YUV(154.2780, -11.4761, 40.9752)	3
<i>Conversions</i>	4
<i>Details</i>	6
<i>Harmonies</i>	12
<i>Previews</i>	24
<i>Color Blindness Simulation</i>	28
<i>CSS Examples</i>	31

Color

**YUV(154.2780, -11.4761,
40.9752)**

Conversions

Conversions Part 1

Format	Color
Hex	C98783
RGB	201, 135, 131
RGB Percent	79%, 53%, 51%
CMY	0.2118, 0.4706, 0.4863
CMYK	0.00, 0.33, 0.35, 0.21
HSL	3°, 39%, 65%
HSV	3°, 35%, 79%
XYZ	36.8481, 31.3841, 25.5884
YIQ	154.2780, 40.6200, 12.7480

Conversions

Conversions Part 2

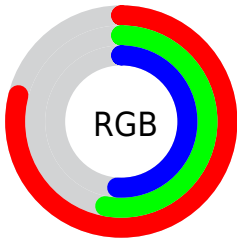
Format	Color
R _Y B	201, 135, 131
Decimal	13207427
CIE Lab	62.83, 24.80, 12.49
CIE LCh	63, 27.765, 26.742
Yxy	31.3841, 0.3928, 0.3345
Android (android.graphics.Color)	4291397507 (0xFFC98783)
YUV	154.2780, -11.4761, 40.9752
Hunter-Lab	56.0216, 19.3704, 12.1338

Details

The YUV color **154.2780, -11.4761, 40.9752** is a light color, and the websafe version is hex **CC9999**. A complement of this color would be **177.7220, 11.4761, -40.9752**, and the grayscale version is **154.0000, 0.0000, 0.0000**.

A 20% lighter version of the original color is **208.1640, -11.9129, 41.0752**, and **102.0110, -9.8654, 37.7014** is the 20% darker color. If you saturate the color by 10%, you get **140.8450, -14.7136, 52.7559**, and if you desaturate by 10%, it is **167.7110, -8.2385, 29.1945**.

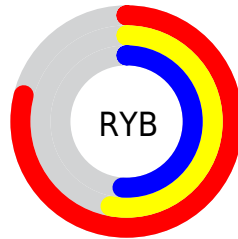
Distribution



Red (79%)

Green (53%)

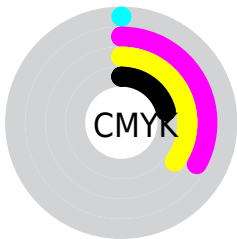
Blue (51%)



Red (79%)

Yellow (53%)

Blue (51%)

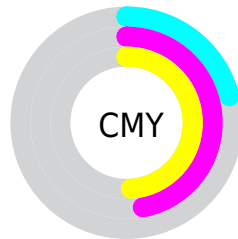


Cyan (0%)

Magenta (33%)

Yellow (35%)

Black (21%)



Cyan (21%)

Magenta (47%)

Yellow (49%)

Brightness & Saturation Gradients

These gradients show how the YUV color 154.2780, -11.4761, 40.9752 changes by changing the brightness by 10 percent. The first figure shows a shift by +10% for each color and the second figure -10%.

Similar to the brightness gradients but the following saturation gradients show a change of the YUV color 154.2780, -11.4761, 40.9752 by changing the saturation by 10% instead.

■ 154.2780,
-11.4761, 40.9752

■ 154.2780,
-11.4761, 40.9752

255.0000, 0.0000,
0.0000

■ 127.7940,
-10.7444, 39.6457

■ 208.1640,
-11.9129, 41.0752

■ 102.0110, -9.8654,
37.7014

■ 227.7920, -7.7855,
23.8614

■ 77.8150, -9.2758,
35.2422

■ 247.4200, -3.6581,
6.6477

■ 54.0320, -8.3968,
33.2979

■ 30.3630, -7.0810,
31.2536

■ 12.8570, -6.3385,
26.4354

■ 0.0000, 0.0000,

0.0000

■ 154.2780,
-11.4761, 40.9752

■ 154.2780,
-11.4761, 40.9752

■ 140.8450,
-14.7136, 52.7559

■ 167.7110, -8.2385,
29.1945

■ 127.4120,
-17.9511, 64.5367

■ 181.1440, -5.0010,
17.4137

■ 113.9790,
-21.1886, 76.3174

■ 194.5770, -1.7635,
5.6330

■ 100.5460,
-24.4262, 88.0982

■ 208.0100, 1.4741,
-6.1478

■ 87.1130, -27.6637,
99.8789

■ 221.5570, 5.1484,
-18.0285

■ 73.5660, -31.3380,
111.7596

■ 234.9900, 8.3859,
-29.8092

■ 66.5560, -32.8121,
117.9074

■ 238.8540, 7.9600,
-33.1980

Harmonies

Analogous

The Analogous color harmony consists of three colors that are next to each other on the color wheel.



155.6440, 0.1755, 37.1462



154.2780, -11.4761, 40.9752



152.6440, -20.0375, 33.6382

Triad

The Triadic color harmony groups three colors that are evenly spaced from another and form a triangle on the color wheel.



154.2780, -11.4761, 40.9752



145.0990, -10.4018, -23.7658



148.5830, 25.8416, -28.5753

Complementary

The Complementary color scheme is a pair of colors which are on the opposite of each other on the color wheel.



154.2780, -11.4761, 40.9752



177.7220, 11.4761, -40.9752

Split Complementary

Split-complementary colors differ from the complementary color scheme. The scheme consists of three colors, the original color and two neighbors of the complement color.



141.7990, 24.7491, -51.5667



154.2780, -11.4761, 40.9752



140.6370, 3.6300, -44.4086

Square

The Square scheme is like the rectangle color scheme, but the four colors are evenly spaced on the color wheel.



154.2780, -11.4761, 40.9752



148.0110, -20.2184, -1.7636



138.4040, 17.0558, -57.3593



154.0810, 20.6661, -1.8250

Rectangle

The Rectangle color scheme consists of four colors that form a rectangle on the color wheel.



154.2780, -11.4761, 40.9752



151.6660, -23.4993, 23.9719



138.4040, 17.0558, -57.3593



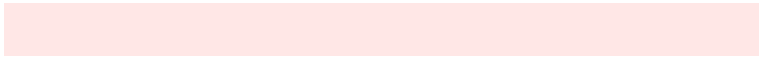
146.5280, 25.8687, -37.2971

Sweetspot

The Sweet Spot groups the original color and five complimentary colors.



154.2780, -11.4761, 40.9752



238.0620, -3.9746, 14.8546



159.5680, 18.9470, 36.3359



117.3710, -2.6479, 9.3216



0.0000, 0.0000, 0.0000



128.0000, 0.0000, 0.0000

Same Dimension

The Same Dimension uses a secret algorithm to generate beautiful new colors.



154.2780, -11.4761, 40.9752



183.5150, -17.5089, 62.6923



174.8230, -21.6047, 22.9572



92.6910, -1.3267, 5.5330



54.0200, -26.6319, 95.5755



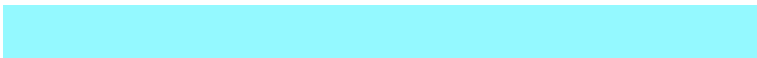
11.9380, -5.8854, 21.1024

Inverse Universe

The Inverse Universe completely reimagines the original color for something new.



177.7220, 11.4761, -40.9752



219.4850, 17.5089, -62.6923



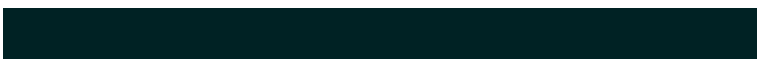
157.7640, 21.3153, -23.4720



96.3090, 1.3267, -5.5330



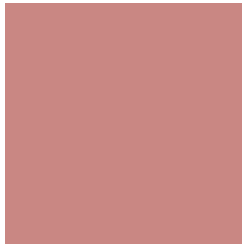
108.9800, 26.6319, -95.5755



24.0620, 5.8854, -21.1024

Previews

White Background



This preview shows how the YUV color 154.2780, -11.4761, 40.9752 looks on a white background.

Color Contrast Check

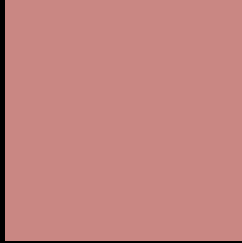
Large Text (above 18pt) WCAG AA × Fail

Any Text WCAG AA × Fail

Large Text (above 18pt) WCAG AAA × Fail

Any Text WCAG AAA × Fail

Black Background



This preview shows how the YUV color 154.2780, -11.4761, 40.9752 looks on a black background.

Color Contrast Check

Large Text (above 18pt) WCAG AA ✓ Pass

Any Text WCAG AA ✓ Pass

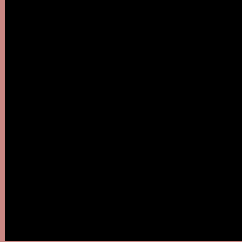
Large Text (above 18pt) WCAG AAA ✓ Pass

Any Text WCAG AAA ✓ Pass

If you want to check with other color combinations, try the [Color Contrast Checker](#).

YUV 154.2780, -11.4761, 40.9752

Background



This preview shows how black text looks on a background with the YUV color 154.2780, -11.4761, 40.9752.



This preview shows how white text looks on a background with the YUV color 154.2780, -11.4761, 40.9752.

40.9752.

Color Blindness Simulation

Color vision deficiency is a very complex topic, and I could not describe the different causes any better than Wikipedia does, so if you want to learn more, you should check out their [article about color blindness](#).

Dichromacy



Original Color

154.2780, -11.4761, 40.9752

Protanopia

152.4260, -6.1260, 4.8884

Deuteranopia

153.3200, -11.9898, 19.0134



Tritanopia

154.7710, -5.8031, 41.4198

Trichromacy



Original Color

154.2780, -11.4761, 40.9752

Protanomaly

153.3460, -8.0586, 18.1136

Deuteranomaly

153.7770, -11.7221, 26.5056

Tritanomaly

154.9020, -7.8397, 41.3049

Monochromacy



Original Color

154.2780, -11.4761, 40.9752

Achromatopsia

154.0000, 0.0000, 0.0000

Achromatomaly

154.0620, -3.9746, 14.8546

CSS Examples

Text

The CSS property to change the color of the text to YUV 154.2780, -11.4761, 40.9752 is called "color". The color property can be set on classes, ids or directly on the HTML element.

This example shows how text in the color `rgb(201, 135, 131)` looks like.

```
.text, #text, p{  
    color:rgb(201, 135, 131)  
}
```

If you want to add a text shadow in that color use the text-shadow property, you can generate a text shadow directly with our [CSS Text Shadow Generator](#).

Here you see how black text with a 4 pixel rgb(201, 135, 131) colored shadow looks like.

```
.shadow{ text-shadow: 4px 4px 2px rgb(201, 135, 131) }
```

Border

The CSS property to change the border of an element to YUV 154.2780, -11.4761, 40.9752 is called "border".

The border property can be set on classes, ids or directly on the HTML element.

This example shows the color as border, it can be applied via the CSS property "border" or "border-color".

```
.border, #border, table{ border:4px solid rgb(201, 135, 131) }
```


If only the border color should be changed use the property `border-color`.

```
.border{ border-color:rgb(201, 135, 131) }
```

If you want to add a box shadow in that color use:

Here you see how a box with a 4 pixel `rgb(201, 135, 131)` colored shadow looks like.

```
.boxshadow{ -moz-box-shadow:4px 4px 4px  
4px rgb(201, 135, 131); -webkit-box-  
shadow:4px 4px 4px 4px rgb(201, 135, 131);  
box-shadow:4px 4px 4px 4px rgb(201, 135,  
131) }
```

Background

The CSS property to change the background color of an element to YUV 154.2780, -11.4761, 40.9752 is called "background". The background property can be set on classes, ids or directly on the HTML element.

```
.background, #background, body{  
background: rgb(201, 135, 131) }
```

If only the background color should be changed can be used:

```
.background{ background-color: rgb(201,  
135, 131) }
```

This example shows the color as background, it is applied via the CSS property "background".

To optimize and compress your CSS code, you can use our [online CSS compressor and optimizer](#) based on csstidy. If you want to create a linear or radial gradient as background or border, check our [CSS Gradient Generator](#).

Hey! You found this booklet interesting? Support Converting Colors with the new Membership Option!

The pro membership hides all ads, plus gives you double the colors in the color bucket, and more awesome pro features!

[Learn more, Memberships starting at \\$2.50/m!](#)

**Follow me
on Twitter!**

@ConvertingColor