

Converting Colors

YUV(154.3830, -7.0908,
81.2251)

Have a look what the booklet for
YUV(154.3830, -7.0908, 81.2251)
contains.

YUV(154.3830, -7.0908, 81.2251)	3
<i>Conversions</i>	4
<i>Details</i>	6
<i>Harmonies</i>	12
<i>Previews</i>	24
<i>Color Blindness Simulation</i>	28
<i>CSS Examples</i>	31

Color

**YUV(154.3830, -7.0908,
81.2251)**

Conversions

Conversions Part 1

Format	Color
Hex	F76E8C
RGB	247, 110, 140
RGB Percent	97%, 43%, 55%
CMY	0.0314, 0.5686, 0.4510
CMYK	0.00, 0.55, 0.43, 0.03
HSL	347°, 90%, 70%
HSV	347°, 55%, 97%
XYZ	48.6673, 32.8195, 28.5807
YIQ	154.3830, 72.0220, 38.3740

Conversions

Conversions Part 2

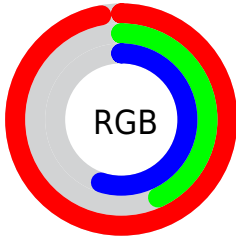
Format	Color
R _Y B	247, 110, 140
Decimal	16215692
CIE Lab	64.01, 55.12, 9.90
CIE LCh	64, 56.001, 10.182
Yxy	32.8195, 0.4422, 0.2982
Android (android.graphics.Color)	4294405772 (0xFFFF76E8C)
YUV	154.3830, -7.0908, 81.2251
Hunter-Lab	57.2883, 51.3842, 10.5225

Details

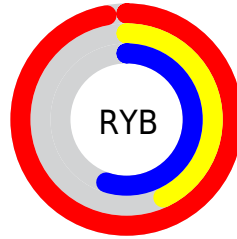
The YUV color **154.3830, -7.0908, 81.2251** is a light color, and the websafe version is hex **FF6699**. A complement of this color would be **202.6170, 7.0908, -81.2251**, and the grayscale version is **154.0000, 0.0000, 0.0000**.

A 20% lighter version of the original color is **195.6890, -1.3257, 52.0157**, and **97.5720, -3.7330, 77.5514** is the 20% darker color. If you saturate the color by 10%, you get **137.5420, -8.1552, 95.9947**, and if you desaturate by 10%, it is **171.2240, -6.0264, 66.4556**.

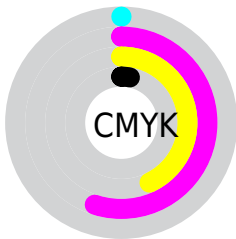
Distribution



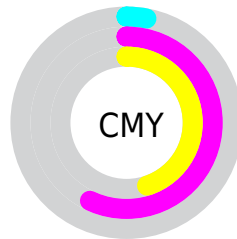
- Red (97%)
- Green (43%)
- Blue (55%)



- Red (97%)
- Yellow (43%)
- Blue (55%)



- Cyan (0%)
- Magenta (55%)
- Yellow (43%)
- Black (3%)



- Cyan (3%)
- Magenta (57%)
- Yellow (45%)

Brightness & Saturation Gradients

These gradients show how the YUV color 154.3830, -7.0908, 81.2251 changes by changing the brightness by 10 percent. The first figure shows a shift by +10% for each color and the second figure -10%.

Similar to the brightness gradients but the following saturation gradients show a change of the YUV color 154.3830, -7.0908, 81.2251 by changing the saturation by 10% instead.

154.3830, -7.0908,
81.2251

154.3830, -7.0908,
81.2251

255.0000, 0.0000,
0.0000

125.8280, -5.3382,
79.0808

195.6890, -1.3257,
52.0157

97.5720, -3.7330,
77.5514

215.3170, 2.8017,
34.8020

65.7340, 0.6241,
80.0403

235.6460, 7.0765,
16.9735

43.1030, 0.9352,
73.5777

253.8260, 0.5788,
1.0296

32.1520, -3.5259,
57.7487

21.3430, -10.0291,
43.5492

12.6720, -5.7543,

25.7207

■ 0.0000, 0.0000,
0.0000

■ 154.3830, -7.0908,
81.2251

■ 154.3830, -7.0908,
81.2251

■ 137.5420, -8.1552,
95.9947

■ 171.2240, -6.0264,
66.4556

■ 121.1740, -9.9458,
110.3494

■ 187.5920, -4.2359,
52.1008

■ 104.3330,
-11.0102, 125.1190

■ 204.4330, -3.1715,
37.3313

■ 87.4920, -12.0746,
139.8885

■ 221.2740, -2.1071,
22.5617

■ 80.0090, -12.8224,
146.4511

■ 238.1150, -1.0427,
7.7921

252.6080, 1.1793,
-4.9182

Harmonies

Analogous

The Analogous color harmony consists of three colors that are next to each other on the color wheel.



158.2230, 15.6661, 62.0714



154.3830, -7.0908, 81.2251



153.0900, -29.6244, 75.3431

Triad

The Triadic color harmony groups three colors that are evenly spaced from another and form a triangle on the color wheel.



154.3830, -7.0908, 81.2251



141.8280, -32.9462, -26.1592



128.1760, 59.5662, -112.4104

Complementary

The Complementary color scheme is a pair of colors which are on the opposite of each other on the color wheel.



154.3830, -7.0908, 81.2251



202.6170, 7.0908, -81.2251

Split Complementary

Split-complementary colors differ from the complementary color scheme. The scheme consists of three colors, the original color and two neighbors of the complement color.



128.7510, 43.9998, -112.9146



154.3830, -7.0908, 81.2251



117.4650, 0.7568, -103.0168

Square

The Square scheme is like the rectangle color scheme, but the four colors are evenly spaced on the color wheel.



154.3830, -7.0908, 81.2251



147.9660, -48.7902, 15.8158



125.1540, 22.6021, -109.7601



147.4490, 52.5296, -48.6288

Rectangle

The Rectangle color scheme consists of four colors that form a rectangle on the color wheel.



154.3830, -7.0908, 81.2251



152.4890, -41.6531, 60.0841



125.1540, 22.6021, -109.7601



129.0250, 55.2037, -113.1549

Sweetspot

The Sweet Spot groups the original color and five complimentary colors.



154.3830, -7.0908, 81.2251



225.8830, -2.4073, 25.5356



157.0130, 44.3636, 50.8546



110.4580, -1.2118, 15.3843



0.0000, 0.0000, 0.0000



128.0000, 0.0000, 0.0000

Same Dimension

The Same Dimension uses a secret algorithm to generate beautiful new colors.



154.3830, -7.0908, 81.2251



139.4610, -8.6083, 101.3277



172.6820, -30.9022, 65.1769



113.9300, -0.4585, 7.0774



60.2880, -9.5090, 110.2494



19.1230, -3.0186, 34.9721

Inverse Universe

The Inverse Universe completely reimagines the original color for something new.



154.3830, -7.0908, 81.2251



139.4610, -8.6083, 101.3277



184.3180, 30.9022, -65.1769



113.9300, -0.4585, 7.0774



60.2880, -9.5090, 110.2494



19.1230, -3.0186, 34.9721

Previews

White Background



This preview shows how the YUV color 154.3830, -7.0908, 81.2251 looks on a white background.

Color Contrast Check

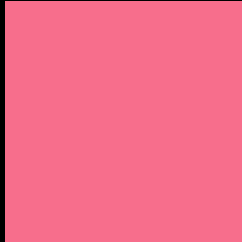
Large Text (above 18pt) WCAG AA × Fail

Any Text WCAG AA × Fail

Large Text (above 18pt) WCAG AAA × Fail

Any Text WCAG AAA × Fail

Black Background



This preview shows how the YUV color 154.3830, -7.0908, 81.2251 looks on a black background.

Color Contrast Check

Large Text (above 18pt) WCAG AA ✓ Pass

Any Text WCAG AA ✓ Pass

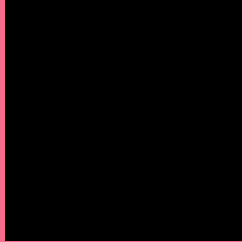
Large Text (above 18pt) WCAG AAA ✓ Pass

Any Text WCAG AAA ✓ Pass

If you want to check with other color combinations, try the [Color Contrast Checker](#).

YUV 154.3830, -7.0908, 81.2251

Background



This preview shows how black text looks on a background with the YUV color 154.3830, -7.0908, 81.2251.



This preview shows how white text looks on a background with the YUV color 154.3830, -7.0908,

Color Blindness Simulation

Color vision deficiency is a very complex topic, and I could not describe the different causes any better than Wikipedia does, so if you want to learn more, you should check out their [article about color blindness](#).

Dichromacy



Original Color

154.3830, -7.0908, 81.2251

Protanopia

156.4390, 4.2206, -0.3850

Deuteranopia

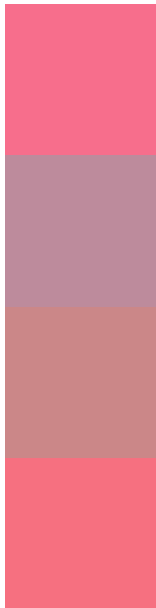
156.5480, -11.1162, 18.8134



Tritanopia

153.6790, -16.1107, 80.9655

Trichromacy



Original Color

154.3830, -7.0908, 81.2251

Protanomaly

155.8880, 0.0552, 29.0392

Deuteranomaly

155.4460, -9.5869, 41.7049

Tritanomaly

153.8900, -12.7638, 80.7805

Monochromacy



Original Color

154.3830, -7.0908, 81.2251

Achromatopsia

154.0000, 0.0000, 0.0000

Achromatomaly

154.2040, -2.5656, 29.6391

CSS Examples

Text

The CSS property to change the color of the text to YUV 154.3830, -7.0908, 81.2251 is called "color". The color property can be set on classes, ids or directly on the HTML element.

This example shows how text in the color `rgb(247, 110, 140)` looks like.

```
.text, #text, p{  
    color:rgb(247, 110, 140)  
}
```

If you want to add a text shadow in that color use the text-shadow property, you can generate a text shadow directly with our [CSS Text Shadow Generator](#).

Here you see how black text with a 4 pixel rgb(247, 110, 140) colored shadow looks like.

```
.shadow{ text-shadow: 4px 4px 2px rgb(247, 110, 140) }
```

Border

The CSS property to change the border of an element to YUV 154.3830, -7.0908, 81.2251 is called "border". The border property can be set on classes, ids or directly on the HTML element.

This example shows the color as border, it can be applied via the CSS property "border" or "border-color".

```
.border, #border, table{ border:4px solid rgb(247, 110, 140) }
```


If only the border color should be changed use the property `border-color`.

```
.border{ border-color:rgb(247, 110, 140) }
```

If you want to add a box shadow in that color use:

Here you see how a box with a 4 pixel `rgb(247, 110, 140)` colored shadow looks like.

```
.boxshadow{ -moz-box-shadow:4px 4px 4px  
4px rgb(247, 110, 140); -webkit-box-  
shadow:4px 4px 4px 4px rgb(247, 110, 140);  
box-shadow:4px 4px 4px 4px rgb(247, 110,  
140) }
```

Background

The CSS property to change the background color of an element to YUV 154.3830, -7.0908, 81.2251 is called "background". The background property can be set on classes, ids or directly on the HTML element.

```
.background, #background, body{  
background: rgb(247, 110, 140) }
```

If only the background color should be changed can be used:

```
.background{ background-color: rgb(247,  
110, 140) }
```

This example shows the color as background, it is applied via the CSS property "background".

To optimize and compress your CSS code, you can use our [online CSS compressor and optimizer](#) based on csstidy. If you want to create a linear or radial gradient as background or border, check our [CSS Gradient Generator](#).

Hey! You found this booklet interesting? Support Converting Colors with the new Membership Option!

The pro membership hides all ads, plus gives you double the colors in the color bucket, and more awesome pro features!

[Learn more, Memberships starting at \\$2.50/m!](#)

**Follow me
on Twitter!**

@ConvertingColor