

Converting Colors

YUV(154.4020, -13.0162,
21.5724)

Have a look what the booklet for
YUV(154.4020, -13.0162, 21.5724)
contains.

YUV(154.4020, -13.0162, 21.5724)	3
<i>Conversions</i>	4
<i>Details</i>	6
<i>Harmonies</i>	12
<i>Previews</i>	24
<i>Color Blindness Simulation</i>	28
<i>CSS Examples</i>	31

Color

**YUV(154.4020, -13.0162,
21.5724)**

Conversions

Conversions Part 1

Format	Color
Hex	B39380
RGB	179, 147, 128
RGB Percent	70%, 58%, 50%
CMY	0.2980, 0.4235, 0.4980
CMYK	0.00, 0.18, 0.28, 0.30
HSL	22°, 25%, 60%
HSV	22°, 28%, 70%
XYZ	32.9204, 32.0097, 24.8655
YIQ	154.4020, 25.1710, 0.8750

Conversions

Conversions Part 2

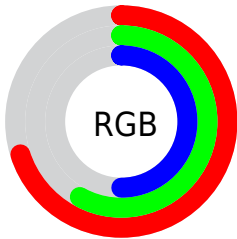
Format	Color
RYB	179, 158, 128
Decimal	11768704
CIELab	63.35, 9.11, 14.56
CIELCh	63, 17.178, 57.975
Yxy	32.0097, 0.3666, 0.3565
Android (android.graphics.Color)	4289958784 (0xFFB39380)
YUV	154.4020, -13.0162, 21.5724
Hunter-Lab	56.5771, 4.8536, 13.5462

Details

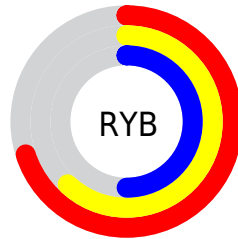
The YUV color **154.4020, -13.0162, 21.5724** is a light color, and the websafe version is hex **CC9999**. A complement of this color would be **152.5980, 13.0162, -21.5724**, and the grayscale version is **155.0000, 0.0000, 0.0000**.

A 20% lighter version of the original color is **208.8860, -13.7478, 22.9020**, and **102.7330, -11.7004, 19.5282** is the 20% darker color. If you saturate the color by 10%, you get **145.8930, -17.6952, 29.0348**, and if you desaturate by 10%, it is **162.9110, -8.3371, 14.1101**.

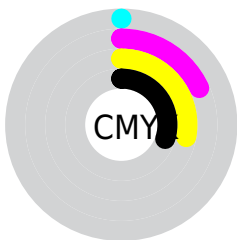
Distribution



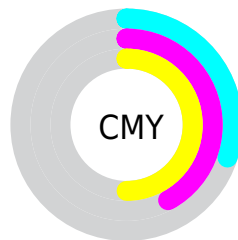
- Red (70%)
- Green (58%)
- Blue (50%)



- Red (70%)
- Yellow (62%)
- Blue (50%)



- Cyan (0%)
- Magenta (18%)
- Yellow (28%)
- Black (30%)



- Cyan (30%)
- Magenta (42%)
- Yellow (50%)

Brightness & Saturation Gradients

These gradients show how the YUV color 154.4020, -13.0162, 21.5724 changes by changing the brightness by 10 percent. The first figure shows a shift by +10% for each color and the second figure -10%.

Similar to the brightness gradients but the following saturation gradients show a change of the YUV color 154.4020, -13.0162, 21.5724 by changing the saturation by 10% instead.

■ 154.4020,
-13.0162, 21.5724

■ 154.4020,
-13.0162, 21.5724

255.0000, 0.0000,
0.0000

■ 128.2170,
-12.4320, 20.8577

■ 208.8860,
-13.7478, 22.9020

■ 102.7330,
-11.7004, 19.5282

■ 234.3800,
-13.0053, 18.0837

■ 79.1350, -11.4056,
18.2986

■ 252.9480, -7.8624,
1.7996

■ 55.6510, -10.6739,
16.9691

■ 33.7540, -10.2317,
15.1247

■ 11.9050, -5.8692,
15.8693

■ 0.0000, 0.0000,

0.0000

■ 154.4020,
-13.0162, 21.5724

■ 154.4020,
-13.0162, 21.5724

■ 145.8930,
-17.6952, 29.0348

■ 162.9110, -8.3371,
14.1101

■ 137.3840,
-22.3743, 36.4972

■ 171.4200, -3.6581,
6.6477

■ 128.2880,
-26.7640, 44.4744

■ 180.5160, 0.7316,
-1.3295

■ 119.7790,
-31.4430, 51.9368

■ 189.0250, 5.4107,
-8.7919

■ 111.3840,
-35.6853, 59.2992

■ 197.5340, 10.0897,
-16.2543

■ 102.8750,
-40.3644, 66.7616

■ 205.9290, 14.3320,
-23.6167

■ 93.7790, -44.7540,
74.7388

■ 215.0250, 18.7217,
-31.5939

■ 92.8500, -45.7750,
75.5536

■ 221.7100, 16.4120,
-37.4567

■ 228.1670, 13.2287,
-43.1195

Harmonies

Analogous

The Analogous color harmony consists of three colors that are next to each other on the color wheel.



155.2160, -7.5015, 26.1206



154.4020, -13.0162, 21.5724



152.8800, -14.7308, 11.5062

Triad

The Triadic color harmony groups three colors that are evenly spaced from another and form a triangle on the color wheel.



154.4020, -13.0162, 21.5724



147.7040, 2.1179, -26.0504



154.9150, 12.3669, 0.0745

Complementary

The Complementary color scheme is a pair of colors which are on the opposite of each other on the color wheel.



154.4020, -13.0162, 21.5724



152.5980, 13.0162, -21.5724

Split Complementary

Split-complementary colors differ from the complementary color scheme. The scheme consists of three colors, the original color and two neighbors of the complement color.



152.3260, 15.6153, -15.1949



154.4020, -13.0162, 21.5724



147.6200, 9.5543, -31.2387

Square

The Square scheme is like the rectangle color scheme, but the four colors are evenly spaced on the color wheel.



154.4020, -13.0162, 21.5724



149.0060, -5.9190, -14.9143



149.0210, 14.7796, -27.2054



155.9230, 6.9400, 14.0995

Rectangle

The Rectangle color scheme consists of four colors that form a rectangle on the color wheel.



154.4020, -13.0162, 21.5724



151.4660, -13.5407, 3.0993



149.0210, 14.7796, -27.2054



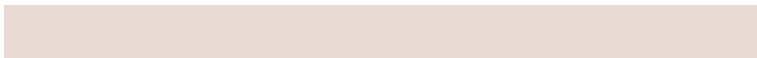
154.2240, 13.6936, -5.4584

Sweetspot

The Sweet Spot groups the original color and five complimentary colors.



154.4020, -13.0162, 21.5724



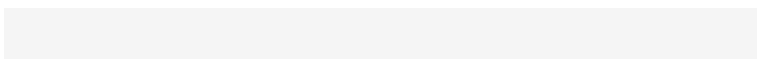
221.9750, -5.4107, 8.7919



146.8970, 6.4598, 28.1543



110.8220, -3.3632, 5.4181



245.0000, 0.0000, 0.0000



117.0000, 0.0000, 0.0000

Same Dimension

The Same Dimension uses a secret algorithm to generate beautiful new colors.



154.4020, -13.0162, 21.5724



194.2310, -20.3269, 33.1234



169.0770, -20.2510, 8.7025



85.0390, -2.4842, 3.4738



79.2060, -39.0486, 64.7173



13.0570, -6.4371, 11.3510

Inverse Universe

The Inverse Universe completely reimagines the original color for something new.



152.5980, 13.0162, -21.5724



191.3560, 20.0375, -33.6382



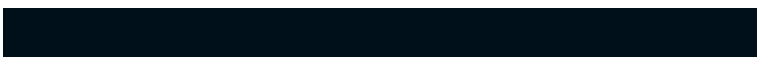
137.9230, 20.2510, -8.7025



84.5480, 2.1948, -3.9886



73.7940, 39.0486, -64.7173



12.3560, 6.7265, -10.8362

Previews

White Background



This preview shows how the YUV color 154.4020, -13.0162, 21.5724 looks on a white background.

Color Contrast Check

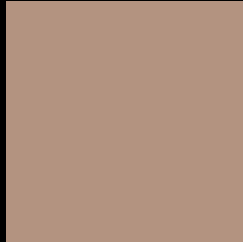
Large Text (above 18pt) WCAG AA × Fail

Any Text WCAG AA × Fail

Large Text (above 18pt) WCAG AAA × Fail

Any Text WCAG AAA × Fail

Black Background



This preview shows how the YUV color 154.4020, -13.0162, 21.5724 looks on a black background.

Color Contrast Check

Large Text (above 18pt) WCAG AA ✓ Pass

Any Text WCAG AA ✓ Pass

Large Text (above 18pt) WCAG AAA ✓ Pass

Any Text WCAG AAA ✓ Pass

If you want to check with other color combinations, try the [Color Contrast Checker](#).

YUV 154.4020, -13.0162, 21.5724 Background



This preview shows how black text looks on a background with the YUV color 154.4020, -13.0162, 21.5724.



This preview shows how white text looks on a background with the YUV color 154.4020, -13.0162, 21.5724.

21.5724.

Color Blindness Simulation

Color vision deficiency is a very complex topic, and I could not describe the different causes any better than Wikipedia does, so if you want to learn more, you should check out their [article about color blindness](#).

Dichromacy



Original Color

154.4020, -13.0162, 21.5724

Protanopia

152.8840, -10.7888, 7.1177

Deuteranopia

154.3910, -13.0108, 19.8281



Tritanopia

155.9150, -0.9441, 22.8765

Trichromacy



Original Color

154.4020, -13.0162, 21.5724

Protanomaly

153.6890, -11.6787, 12.5507

Deuteranomaly

154.6900, -13.1582, 20.4429

Tritanomaly

155.1770, -5.0173, 22.6468

Monochromacy



Original Color

154.4020, -13.0162, 21.5724

Achromatopsia

154.0000, 0.0000, 0.0000

Achromatomaly

153.9040, -4.3897, 7.9772

CSS Examples

Text

The CSS property to change the color of the text to YUV 154.4020, -13.0162, 21.5724 is called "color". The color property can be set on classes, ids or directly on the HTML element.

This example shows how text in the color `rgb(179, 147, 128)` looks like.

```
.text, #text, p{  
    color:rgb(179, 147, 128)  
}
```

If you want to add a text shadow in that color use the text-shadow property, you can generate a text shadow directly with our [CSS Text Shadow Generator](#).

Here you see how black text with a 4 pixel rgb(179, 147, 128) colored shadow looks like.

```
.shadow{ text-shadow: 4px 4px 2px rgb(179, 147, 128) }
```

Border

The CSS property to change the border of an element to YUV 154.4020, -13.0162, 21.5724 is called "border".

The border property can be set on classes, ids or directly on the HTML element.

This example shows the color as border, it can be applied via the CSS property "border" or "border-color".

```
.border, #border, table{ border:4px solid rgb(179, 147, 128) }
```


If only the border color should be changed use the property `border-color`.

```
.border{ border-color:rgb(179, 147, 128) }
```

If you want to add a box shadow in that color use:

Here you see how a box with a 4 pixel `rgb(179, 147, 128)` colored shadow looks like.

```
.boxshadow{ -moz-box-shadow:4px 4px 4px  
4px rgb(179, 147, 128); -webkit-box-  
shadow:4px 4px 4px 4px rgb(179, 147, 128);  
box-shadow:4px 4px 4px 4px rgb(179, 147,  
128) }
```

Background

The CSS property to change the background color of an element to YUV 154.4020, -13.0162, 21.5724 is called "background". The background property can be set on classes, ids or directly on the HTML element.

```
.background, #background, body{  
background: rgb(179, 147, 128) }
```

If only the background color should be changed can be used:

```
.background{ background-color: rgb(179,  
147, 128) }
```

This example shows the color as background, it is applied via the CSS property "background".

To optimize and compress your CSS code, you can use our [online CSS compressor and optimizer](#) based on csstidy. If you want to create a linear or radial gradient as background or border, check our [CSS Gradient Generator](#).

Hey! You found this booklet interesting? Support Converting Colors with the new Membership Option!

The pro membership hides all ads, plus gives you double the colors in the color bucket, and more awesome pro features!

[Learn more, Memberships starting at \\$2.50/m!](#)

**Follow me
on Twitter!**

@ConvertingColor