

Converting Colors

YUV(154.5720, -14.0860,
38.0864)

Have a look what the booklet for
YUV(154.5720, -14.0860, 38.0864)
contains.

YUV(154.5720, -14.0860, 38.0864)	3
<i>Conversions</i>	4
<i>Details</i>	6
<i>Harmonies</i>	12
<i>Previews</i>	24
<i>Color Blindness Simulation</i>	28
<i>CSS Examples</i>	31

Color

**YUV(154.5720, -14.0860,
38.0864)**

Conversions

Conversions Part 1

Format	Color
Hex	C68A7E
RGB	198, 138, 126
RGB Percent	78%, 54%, 49%
CMY	0.2235, 0.4588, 0.5059
CMYK	0.00, 0.30, 0.36, 0.22
HSL	10°, 39%, 64%
HSV	10°, 36%, 78%
XYZ	36.1431, 31.6891, 23.9503
YIQ	154.5720, 39.6120, 8.9880

Conversions

Conversions Part 2

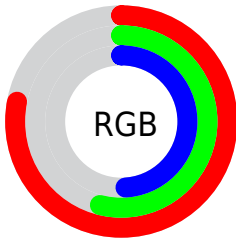
Format	Color
R _Y B	198, 140, 126
Decimal	13011582
CIE Lab	63.09, 21.36, 15.62
CIE LCh	63, 26.463, 36.186
Yxy	31.6891, 0.3938, 0.3453
Android (android.graphics.Color)	4291201662 (0xFFC68A7E)
YUV	154.5720, -14.0860, 38.0864
Hunter-Lab	56.2931, 16.0935, 14.1797

Details

The YUV color **154.5720, -14.0860, 38.0864** is a light color, and the websafe version is hex **CC9999**. A complement of this color would be **169.4280, 14.0860, -38.0864**, and the grayscale version is **155.0000, 0.0000, 0.0000**.

A 20% lighter version of the original color is **209.3550, -14.9650, 40.0307**, and **102.8920, -12.7648, 34.2977** is the 20% darker color. If you saturate the color by 10%, you get **142.9000, -18.1917, 48.3227**, and if you desaturate by 10%, it is **166.8310, -10.2697, 27.3352**.

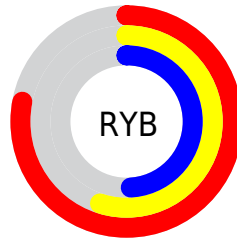
Distribution



Red (78%)

Green (54%)

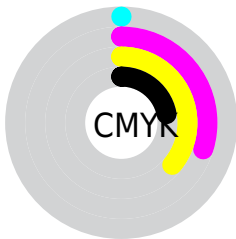
Blue (49%)



Red (78%)

Yellow (55%)

Blue (49%)

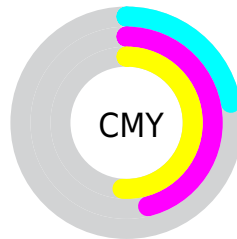


Cyan (0%)

Magenta (30%)

Yellow (36%)

Black (22%)



Cyan (22%)

Magenta (46%)

Yellow (51%)

Brightness & Saturation Gradients

These gradients show how the YUV color 154.5720, -14.0860, 38.0864 changes by changing the brightness by 10 percent. The first figure shows a shift by +10% for each color and the second figure -10%.

Similar to the brightness gradients but the following saturation gradients show a change of the YUV color 154.5720, -14.0860, 38.0864 by changing the saturation by 10% instead.

■ 154.5720,
-14.0860, 38.0864

■ 154.5720,
-14.0860, 38.0864

255.0000, 0.0000,
0.0000

■ 128.0880,
-13.3544, 36.7568

■ 209.3550,
-14.9650, 40.0307

■ 102.8920,
-12.7648, 34.2977

■ 228.8690,
-11.2744, 22.9169

■ 78.1090, -11.8857,
32.3534

■ 248.4970, -7.1470,
5.7031

■ 54.4400, -10.5699,
30.3091

■ 31.5430, -10.1277,
28.4648

■ 12.2590, -6.0437,
25.2059

■ 0.0000, 0.0000,

0.0000

■ 154.5720,
-14.0860, 38.0864

■ 154.5720,
-14.0860, 38.0864

■ 142.9000,
-18.1917, 48.3227

■ 166.8310,
-10.2697, 27.3352

■ 130.6410,
-22.0080, 59.0738

■ 178.5030, -6.1640,
17.0989

■ 118.4960,
-25.3875, 69.7250

■ 190.6480, -2.7845,
6.4477

■ 106.8240,
-29.4932, 79.9614

■ 202.3200, 1.3212,
-3.7886

■ 94.5650, -33.3095,
90.7125

■ 214.5790, 5.1376,
-14.5398

■ 82.8930, -37.4152,
100.9488

■ 226.2510, 9.2433,
-24.7761

■ 78.5730, -38.7365,
104.7375

■ 237.3700, 8.6916,
-34.5275

■ 237.9570, 8.4022,
-35.0423

Harmonies

Analogous

The Analogous color harmony consists of three colors that are next to each other on the color wheel.



155.7320, -3.3189, 37.9460



154.5720, -14.0860, 38.0864



152.9700, -21.1842, 28.0903

Triad

The Triadic color harmony groups three colors that are evenly spaced from another and form a triangle on the color wheel.



154.5720, -14.0860, 38.0864



144.9180, -5.8756, -28.8691



151.3670, 23.4831, -18.7389

Complementary

The Complementary color scheme is a pair of colors which are on the opposite of each other on the color wheel.



154.5720, -14.0860, 38.0864



169.4280, 14.0860, -38.0864

Split Complementary

Split-complementary colors differ from the complementary color scheme. The scheme consists of three colors, the original color and two neighbors of the complement color.



145.1530, 24.5746, -42.2302



154.5720, -14.0860, 38.0864



141.6520, 7.5666, -47.0528

Square

The Square scheme is like the rectangle color scheme, but the four colors are evenly spaced on the color wheel.



154.5720, -14.0860, 38.0864



148.4770, -16.9972, -8.3113



140.9960, 19.2290, -54.3705



155.3270, 17.5868, 5.8522

Rectangle

The Rectangle color scheme consists of four colors that form a rectangle on the color wheel.



154.5720, -14.0860, 38.0864



151.5620, -22.4621, 17.9241



140.9960, 19.2290, -54.3705



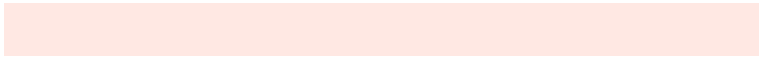
149.5400, 24.3838, -27.6606

Sweetspot

The Sweet Spot groups the original color and five complimentary colors.



154.5720, -14.0860, 38.0864



238.3070, -5.5744, 14.6398



154.3680, 15.5946, 38.2653



117.8440, -3.3741, 8.9068



0.0000, 0.0000, 0.0000



128.0000, 0.0000, 0.0000

Same Dimension

The Same Dimension uses a secret algorithm to generate beautiful new colors.



154.5720, -14.0860, 38.0864



187.6410, -22.0080, 59.0738



175.1170, -24.2147, 20.0684



93.2780, -1.6161, 5.0182



64.5860, -31.8409, 86.3091



14.2860, -7.0430, 19.0432

Inverse Universe

The Inverse Universe completely reimagines the original color for something new.



169.4280, 14.0860, -38.0864



210.3590, 22.0080, -59.0738



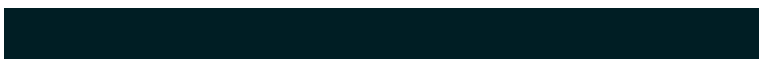
148.2960, 24.5041, -19.5536



95.7220, 1.6161, -5.0182



98.4140, 31.8409, -86.3091



21.7140, 7.0430, -19.0432

Previews

White Background



This preview shows how the YUV color 154.5720, -14.0860, 38.0864 looks on a white background.

Color Contrast Check

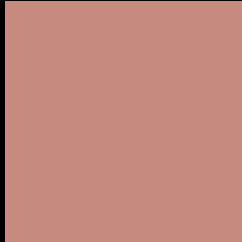
Large Text (above 18pt) WCAG AA × Fail

Any Text WCAG AA × Fail

Large Text (above 18pt) WCAG AAA × Fail

Any Text WCAG AAA × Fail

Black Background



This preview shows how the YUV color 154.5720, -14.0860, 38.0864 looks on a black background.

Color Contrast Check

Large Text (above 18pt) WCAG AA ✓ Pass

Any Text WCAG AA ✓ Pass

Large Text (above 18pt) WCAG AAA ✓ Pass

Any Text WCAG AAA ✓ Pass

If you want to check with other color combinations, try the [Color Contrast Checker](#).

YUV 154.5720, -14.0860, 38.0864 Background



This preview shows how black text looks on a background with the YUV color 154.5720, -14.0860, 38.0864.



This preview shows how white text looks on a background with the YUV color 154.5720, -14.0860,

38.0864.

Color Blindness Simulation

Color vision deficiency is a very complex topic, and I could not describe the different causes any better than Wikipedia does, so if you want to learn more, you should check out their [article about color blindness](#).

Dichromacy



Original Color

154.5720, -14.0860, 38.0864

Protanopia

152.8130, -9.7678, 6.3030

Deuteranopia

153.6470, -14.6160, 21.3576



Tritanopia

155.5750, -5.2135, 38.9607

Trichromacy



Original Color

154.5720, -14.0860, 38.0864

Protanomaly

153.7220, -11.6949, 17.7838

Deuteranomaly

154.0930, -14.3428, 27.1054

Tritanomaly

155.0650, -8.4130, 38.5310

Monochromacy



Original Color

154.5720, -14.0860, 38.0864

Achromatopsia

155.0000, 0.0000, 0.0000

Achromatomaly

155.0080, -5.4269, 14.0250

CSS Examples

Text

The CSS property to change the color of the text to YUV 154.5720, -14.0860, 38.0864 is called "color". The color property can be set on classes, ids or directly on the HTML element.

This example shows how text in the color `rgb(198, 138, 126)` looks like.

```
.text, #text, p{  
    color:rgb(198, 138, 126)  
}
```

If you want to add a text shadow in that color use the text-shadow property, you can generate a text shadow directly with our [CSS Text Shadow Generator](#).

Here you see how black text with a 4 pixel rgb(198, 138, 126) colored shadow looks like.

```
.shadow{ text-shadow: 4px 4px 2px rgb(198, 138, 126) }
```

Border

The CSS property to change the border of an element to YUV 154.5720, -14.0860, 38.0864 is called "border".

The border property can be set on classes, ids or directly on the HTML element.

This example shows the color as border, it can be applied via the CSS property "border" or "border-color".

```
.border, #border, table{ border:4px solid rgb(198, 138, 126) }
```


If only the border color should be changed use the property `border-color`.

```
.border{ border-color:rgb(198, 138, 126) }
```

If you want to add a box shadow in that color use:

Here you see how a box with a 4 pixel `rgb(198, 138, 126)` colored shadow looks like.

```
.boxshadow{ -moz-box-shadow:4px 4px 4px  
4px rgb(198, 138, 126); -webkit-box-  
shadow:4px 4px 4px 4px rgb(198, 138, 126);  
box-shadow:4px 4px 4px 4px rgb(198, 138,  
126) }
```

Background

The CSS property to change the background color of an element to YUV 154.5720, -14.0860, 38.0864 is called "background". The background property can be set on classes, ids or directly on the HTML element.

```
.background, #background, body{  
background: rgb(198, 138, 126) }
```

If only the background color should be changed can be used:

```
.background{ background-color: rgb(198,  
138, 126) }
```

This example shows the color as background, it is applied via the CSS property "background".

To optimize and compress your CSS code, you can use our [online CSS compressor and optimizer](#) based on csstidy. If you want to create a linear or radial gradient as background or border, check our [CSS Gradient Generator](#).

Hey! You found this booklet interesting? Support Converting Colors with the new Membership Option!

The pro membership hides all ads, plus gives you double the colors in the color bucket, and more awesome pro features!

[Learn more, Memberships starting at \\$2.50/m!](#)

**Follow me
on Twitter!**

@ConvertingColor