

# Converting Colors

YUV(154.7680, -18.1266,  
27.3905)

Have a look what the booklet for  
YUV(154.7680, -18.1266, 27.3905)  
contains.

<b>YUV(154.7680, -18.1266, 27.3905)</b> .....	3
<b><i>Conversions</i></b> .....	4
<b><i>Details</i></b> .....	6
<b><i>Harmonies</i></b> .....	12
<b><i>Previews</i></b> .....	24
<b><i>Color Blindness Simulation</i></b> .....	28
<b><i>CSS Examples</i></b> .....	31

# Color

**YUV(154.7680, -18.1266,  
27.3905)**

# Conversions

## Conversions Part 1

Format	Color
Hex	BA9276
RGB	186, 146, 118
RGB Percent	73%, 57%, 46%
CMY	0.2706, 0.4275, 0.5373
CMYK	0.00, 0.22, 0.37, 0.27
HSL	25°, 33%, 60%
HSV	25°, 37%, 73%
XYZ	33.7986, 32.3049, 21.5936
YIQ	154.7680, 32.8280, -0.2280

# Conversions

## Conversions Part 2

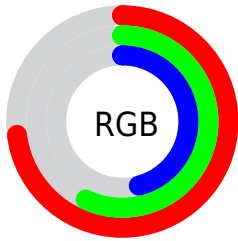
Format	Color
<a href="#">RYB</a>	<a href="#">186, 166, 118</a>
Decimal	<a href="#">12227190</a>
CIELab	<a href="#">63.59, 11.16, 20.60</a>
CIELCh	<a href="#">64, 23.426, 61.561</a>
Yxy	<a href="#">32.3049, 0.3854, 0.3684</a>
Android (android.graphics.Color)	<a href="#">4290417270</a> ( <a href="#">0xFFBA9276</a> )
YUV	<a href="#">154.7680, -18.1266, 27.3905</a>
Hunter-Lab	<a href="#">56.8374, 6.6804, 17.2607</a>

# Details

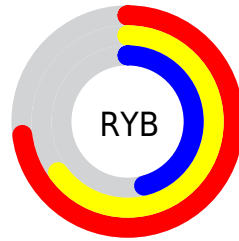
The YUV color  $154.7680, -18.1266, 27.3905$  is a light color, and the websafe version is hex  $CC9966$ . A complement of this color would be  $149.2320, 18.1266, -27.3905$ , and the grayscale version is  $155.0000, 0.0000, 0.0000$ .

A 20% lighter version of the original color is  $209.4370, -19.4424, 29.4348$ , and  $102.8000, -16.6634, 24.7314$  is the 20% darker color. If you saturate the color by 10%, you get  $146.1450, -23.2425, 34.9528$ , and if you desaturate by 10%, it is  $163.3910, -13.0108, 19.8281$ .

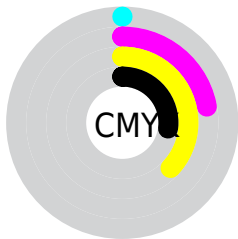
# Distribution



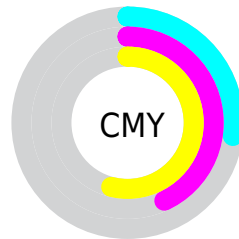
- Red (73%)
- Green (57%)
- Blue (46%)



- Red (73%)
- Yellow (65%)
- Blue (46%)



- Cyan (0%)
- Magenta (22%)
- Yellow (37%)
- Black (27%)



- Cyan (27%)
- Magenta (43%)
- Yellow (54%)

# Brightness & Saturation Gradients

These gradients show how the YUV color 154.7680, -18.1266, 27.3905 changes by changing the brightness by 10 percent. The first figure shows a shift by +10% for each color and the second figure -10%.

Similar to the brightness gradients but the following saturation gradients show a change of the YUV color 154.7680, -18.1266, 27.3905 by changing the saturation by 10% instead.



■ 154.7680,  
-18.1266, 27.3905

■ 154.7680,  
-18.1266, 27.3905

255.0000, 0.0000,  
0.0000

■ 128.2840,  
-17.3950, 26.0609

■ 209.4370,  
-19.4424, 29.4348

■ 102.8000,  
-16.6634, 24.7314

■ 232.6530,  
-17.0839, 19.5983

■ 79.0170, -15.7844,  
22.7871

■ 251.6940,  
-12.6671, 2.8994

■ 55.5330, -15.0528,  
21.4576

254.8860, -0.4368,  
0.1000

■ 33.1800, -16.3577,  
20.0131

■ 12.2150, -6.0220,  
18.2284

■ 0.0000, 0.0000,

0.0000

■ 154.7680,  
-18.1266, 27.3905

■ 154.7680,  
-18.1266, 27.3905

■ 146.1450,  
-23.2425, 34.9528

■ 163.3910,  
-13.0108, 19.8281

■ 137.6360,  
-27.9215, 42.4152

■ 171.9000, -8.3317,  
12.3657

■ 129.0130,  
-33.0374, 49.9776

■ 180.5230, -3.2158,  
4.8033

■ 120.5040,  
-37.7165, 57.4400

■ 189.0320, 1.4632,  
-2.6591

■ 111.8810,  
-42.8323, 65.0024

■ 197.6550, 6.5791,  
-10.2214

■ 103.2580,  
-47.9482, 72.5647

■ 206.2780, 11.6949,  
-17.7838

■ 100.8130,  
-49.7008, 74.7090

■ 214.7870, 16.3740,  
-25.2462

■ 222.0420, 16.2483,  
-31.6088

■ 227.9120, 13.3544,  
-36.7568

# Harmonies

## Analogous

The Analogous color harmony consists of three colors that are next to each other on the color wheel.



156.5330, -11.6018, 34.6126



154.7680, -18.1266, 27.3905



152.8110, -20.1198, 13.3208

# Triad

The Triadic color harmony groups three colors that are evenly spaced from another and form a triangle on the color wheel.



154.7680, -18.1266, 27.3905



145.1970, 4.3399, -38.7608



155.9630, 16.2872, 2.6634

# Complementary

The Complementary color scheme is a pair of colors which are on the opposite of each other on the color wheel.



154.7680, -18.1266, 27.3905



149.2320, 18.1266, -27.3905

# Split Complementary

Split-complementary colors differ from the complementary color scheme. The scheme consists of three colors, the original color and two neighbors of the complement color.



152.6720, 20.8677, -19.8833



154.7680, -18.1266, 27.3905



144.3130, 15.1287, -45.8785

# Square

The Square scheme is like the rectangle color scheme, but the four colors are evenly spaced on the color wheel.



154.7680, -18.1266, 27.3905



148.0220, -6.9128, -22.8213



147.2630, 21.0693, -37.9417



157.6080, 8.0813, 21.3918



# Rectangle

The Rectangle color scheme consists of four colors that form a rectangle on the color wheel.



154.7680, -18.1266, 27.3905



151.3150, -17.9033, 2.3547



147.2630, 21.0693, -37.9417



155.1900, 18.6403, -5.4286

# Sweetspot

The Sweet Spot groups the original color and five complimentary colors.



154.7680, -18.1266, 27.3905



230.2310, -7.0159, 10.3214



143.0060, 7.8850, 37.7057



114.8930, -4.3842, 6.2328



250.0000, 0.0000, 0.0000



122.0000, 0.0000, 0.0000



# Same Dimension

The Same Dimension uses a secret algorithm to generate beautiful new colors.



154.7680, -18.1266, 27.3905



193.5220, -28.3583, 42.5152



174.1390, -27.6765, 10.4021



87.4520, -2.1948, 3.9886



84.2120, -41.5165, 62.9581



15.4160, -7.6001, 11.0362



# Inverse Universe

The Inverse Universe completely reimagines the original color for something new.



149.2320, 18.1266, -27.3905



184.4780, 28.3583, -42.5152



129.8610, 27.6765, -10.4021



86.9610, 2.4842, -3.4738



71.7880, 41.5165, -62.9581



13.1710, 7.3107, -11.5510



# Previews

## White Background



This preview shows how the YUV color 154.7680, -18.1266, 27.3905 looks on a white background.

## Color Contrast Check

Large Text (above 18pt) WCAG AA × Fail

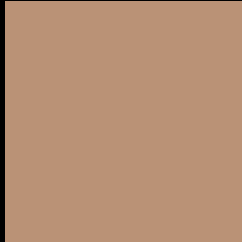
Any Text WCAG AA × Fail

Large Text (above 18pt) WCAG AAA × Fail

Any Text WCAG AAA × Fail



# Black Background



This preview shows how the YUV color 154.7680, -18.1266, 27.3905 looks on a black background.

## Color Contrast Check

Large Text (above 18pt) WCAG AA ✓ Pass

Any Text WCAG AA ✓ Pass

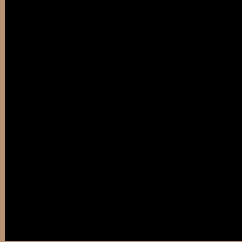
Large Text (above 18pt) WCAG AAA ✓ Pass

Any Text WCAG AAA ✓ Pass

If you want to check with other color combinations, try the [Color Contrast Checker](#).

# YUV 154.7680, -18.1266, 27.3905

## Background



This preview shows how black text looks on a background with the YUV color 154.7680, -18.1266, 27.3905.



This preview shows how white text looks on a background with the YUV color 154.7680, -18.1266, 27.3905.



# Color Blindness Simulation

Color vision deficiency is a very complex topic, and I could not describe the different causes any better than Wikipedia does, so if you want to learn more, you should check out their [article about color blindness](#).

## Dichromacy



### Original Color

154.7680, -18.1266, 27.3905

### Protanopia

153.3420, -15.4516, 9.3471

### Deuteranopia

154.4470, -17.9684, 23.2870



## Tritanopia

156.6060, -2.2708, 28.4095

# Trichromacy



## Original Color

154.7680, -18.1266, 27.3905

## Protanomaly

153.8590, -16.1995, 15.9097

## Deuteranomaly

154.4580, -17.9738, 25.0313

## Tritanomaly

156.1130, -7.9437, 27.9649

# Monochromacy



## Original Color

154.7680, -18.1266, 27.3905

## Achromatopsia

155.0000, 0.0000, 0.0000

## Achromatomaly

155.0460, -6.4317, 9.6067

# CSS Examples

## Text

The CSS property to change the color of the text to YUV 154.7680, -18.1266, 27.3905 is called "color". The color property can be set on classes, ids or directly on the HTML element.

This example shows how text in the color `rgb(186, 146, 118)` looks like.

```
.text, #text, p{  
    color:rgb(186, 146, 118)  
}
```

If you want to add a text shadow in that color use the text-shadow property, you can generate a text shadow directly with our [CSS Text Shadow Generator](#).

Here you see how black text with a 4 pixel rgb(186, 146, 118) colored shadow looks like.

```
.shadow{ text-shadow: 4px 4px 2px rgb(186, 146, 118) }
```

## Border

The CSS property to change the border of an element to YUV 154.7680, -18.1266, 27.3905 is called "border".

The border property can be set on classes, ids or directly on the HTML element.

This example shows the color as border, it can be applied via the CSS property "border" or "border-color".

```
.border, #border, table{ border:4px solid rgb(186, 146, 118) }
```



If only the border color should be changed use the property `border-color`.

```
.border{ border-color:rgb(186, 146, 118) }
```

If you want to add a box shadow in that color use:

Here you see how a box with a 4 pixel `rgb(186, 146, 118)` colored shadow looks like.

```
.boxshadow{ -moz-box-shadow:4px 4px 4px  
4px rgb(186, 146, 118); -webkit-box-  
shadow:4px 4px 4px 4px rgb(186, 146, 118);  
box-shadow:4px 4px 4px 4px rgb(186, 146,  
118) }
```

# Background

The CSS property to change the background color of an element to YUV 154.7680, -18.1266, 27.3905 is called "background". The background property can be set on classes, ids or directly on the HTML element.

```
.background, #background, body{  
background: rgb(186, 146, 118) }
```

If only the background color should be changed can be used:

```
.background{ background-color: rgb(186,  
146, 118) }
```

This example shows the color as background, it is applied via the CSS property "background".

To optimize and compress your CSS code, you can use our [online CSS compressor and optimizer](#) based on csstidy. If you want to create a linear or radial gradient as background or border, check our [CSS Gradient Generator](#).

Hey! You found this booklet interesting? Support Converting Colors with the new Membership Option!

The pro membership hides all ads, plus gives you double the colors in the color bucket, and more awesome pro features!

**[Learn more, Memberships starting at \\$2.50/m!](#)**

**Follow me  
on Twitter!**

@ConvertingColor