

Converting Colors

YUV(154.8310, -10.2697,
27.3352)

Have a look what the booklet for
YUV(154.8310, -10.2697, 27.3352)
contains.

YUV(154.8310, -10.2697, 27.3352)	3
<i>Conversions</i>	4
<i>Details</i>	6
<i>Harmonies</i>	12
<i>Previews</i>	24
<i>Color Blindness Simulation</i>	28
<i>CSS Examples</i>	31

Color

**YUV(154.8310, -10.2697,
27.3352)**

Conversions

Conversions Part 1

Format	Color
Hex	BA8F86
RGB	186, 143, 134
RGB Percent	73%, 56%, 53%
CMY	0.2706, 0.4392, 0.4745
CMYK	0.00, 0.23, 0.28, 0.27
HSL	10°, 27%, 63%
HSV	10°, 28%, 73%
XYZ	34.3752, 31.8053, 26.8815
YIQ	154.8310, 28.5170, 6.3170

Conversions

Conversions Part 2

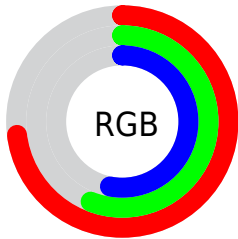
Format	Color
RYB	186, 145, 134
Decimal	12226438
CIELab	63.18, 14.94, 11.05
CIELCh	63, 18.582, 36.502
Yxy	31.8053, 0.3694, 0.3418
Android (android.graphics.Color)	4290416518 (0xFFBA8F86)
YUV	154.8310, -10.2697, 27.3352
Hunter-Lab	56.3961, 10.1081, 11.2164

Details

The YUV color $154.8310, -10.2697, 27.3352$ is a light color, and the websafe version is hex $CC9999$. A complement of this color would be $165.1690, 10.2697, -27.3352$, and the grayscale version is $155.0000, 0.0000, 0.0000$.

A 20% lighter version of the original color is $209.6140, -11.1487, 29.2795$, and $103.6350, -9.6801, 24.8761$ is the 20% darker color. If you saturate the color by 10%, you get $143.8600, -14.2280, 36.9568$, and if you desaturate by 10%, it is $165.8020, -6.3114, 17.7136$.

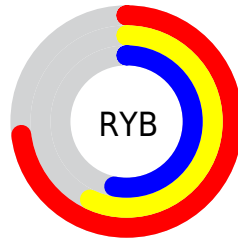
Distribution



Red (73%)

Green (56%)

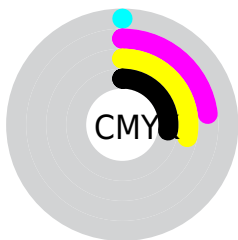
Blue (53%)



Red (73%)

Yellow (57%)

Blue (53%)

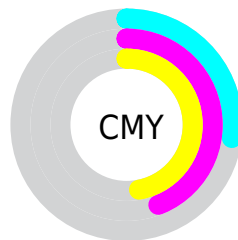


Cyan (0%)

Magenta (23%)

Yellow (28%)

Black (27%)



Cyan (27%)

Magenta (44%)

Yellow (47%)

Brightness & Saturation Gradients

These gradients show how the YUV color 154.8310, -10.2697, 27.3352 changes by changing the brightness by 10 percent. The first figure shows a shift by +10% for each color and the second figure -10%.

Similar to the brightness gradients but the following saturation gradients show a change of the YUV color 154.8310, -10.2697, 27.3352 by changing the saturation by 10% instead.

■ 154.8310,
-10.2697, 27.3352

■ 154.8310,
-10.2697, 27.3352

255.0000, 0.0000,
0.0000

■ 128.6460, -9.6855,
26.6205

■ 209.6140,
-11.1487, 29.2795

■ 103.6350, -9.6801,
24.8761

■ 232.8300, -8.7902,
19.4431

■ 79.1510, -8.9484,
23.5466

■ 253.0450, -4.9522,
1.7145

■ 55.6670, -8.2168,
22.2170

■ 33.5850, -7.1904,
19.6580

■ 10.7640, -5.3067,
22.1320

■ 0.0000, 0.0000,

0.0000

■ 154.8310,
-10.2697, 27.3352

■ 154.8310,
-10.2697, 27.3352

■ 143.8600,
-14.2280, 36.9568

■ 165.8020, -6.3114,
17.7136

■ 132.4160,
-17.4601, 46.9932

■ 177.2460, -3.0793,
7.6773

■ 121.4450,
-21.4184, 56.6147

■ 188.2170, 0.8790,
-1.9443

■ 110.0010,
-24.6505, 66.6511

■ 199.6610, 4.1111,
-11.9807

■ 99.0300, -28.6088,
76.2727

■ 210.6320, 8.0694,
-21.6023

■ 88.0590, -32.5671,
85.8943

■ 221.6030, 12.0277,
-31.2238

■ 76.6150, -35.7992,
95.9306

■ 232.0210, 11.3286,
-40.3604

■ 74.3980, -36.6782,
97.8750

■ 234.3690, 10.1711,
-42.4196

Harmonies

Analogous

The Analogous color harmony consists of three colors that are next to each other on the color wheel.



155.4810, -2.7021, 26.7652



154.8310, -10.2697, 27.3352



153.2340, -14.9054, 20.8428

Triad

The Triadic color harmony groups three colors that are evenly spaced from another and form a triangle on the color wheel.



154.8310, -10.2697, 27.3352



147.7280, -4.3029, -19.9325



152.4620, 16.0412, -11.8062

Complementary

The Complementary color scheme is a pair of colors which are on the opposite of each other on the color wheel.



154.8310, -10.2697, 27.3352



165.1690, 10.2697, -27.3352

Split Complementary

Split-complementary colors differ from the complementary color scheme. The scheme consists of three colors, the original color and two neighbors of the complement color.



148.8900, 16.8162, -27.0905



154.8310, -10.2697, 27.3352



146.0670, 4.8970, -30.7538

Square

The Square scheme is like the rectangle color scheme, but the four colors are evenly spaced on the color wheel.



154.8310, -10.2697, 27.3352



149.8670, -11.7664, -6.0224



146.4070, 12.6173, -33.6829



154.5350, 12.0612, 4.7928

Rectangle

The Rectangle color scheme consists of four colors that form a rectangle on the color wheel.



154.8310, -10.2697, 27.3352



152.5490, -16.0467, 13.5505



146.4070, 12.6173, -33.6829



151.3580, 17.0785, -17.8540

Sweetspot

The Sweet Spot groups the original color and five complimentary colors.



154.8310, -10.2697, 27.3352



230.4420, -3.6689, 10.1364



154.4500, 11.1172, 27.6694



114.7620, -2.3477, 6.3477



250.0000, 0.0000, 0.0000



122.0000, 0.0000, 0.0000

Same Dimension

The Same Dimension uses a secret algorithm to generate beautiful new colors.



154.8310, -10.2697, 27.3352



192.7360, -16.1388, 43.2045



170.0930, -17.7938, 13.9504



86.2780, -1.6161, 5.0182



62.4930, -30.8090, 82.0056



11.3070, -5.5744, 14.6398

Inverse Universe

The Inverse Universe completely reimagines the original color for something new.



165.1690, 10.2697, -27.3352



209.2640, 16.1388, -43.2045



149.9070, 17.7938, -13.9504



88.1350, 1.9054, -4.5034



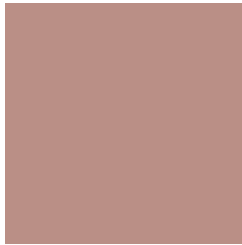
93.5070, 30.8090, -82.0056



16.6930, 5.5744, -14.6398

Previews

White Background



This preview shows how the YUV color 154.8310, -10.2697, 27.3352 looks on a white background.

Color Contrast Check

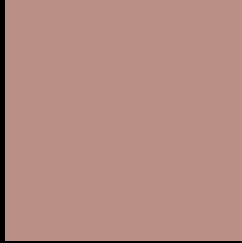
Large Text (above 18pt) WCAG AA × Fail

Any Text WCAG AA × Fail

Large Text (above 18pt) WCAG AAA × Fail

Any Text WCAG AAA × Fail

Black Background



This preview shows how the YUV color 154.8310, -10.2697, 27.3352 looks on a black background.

Color Contrast Check

Large Text (above 18pt) WCAG AA ✓ Pass

Any Text WCAG AA ✓ Pass

Large Text (above 18pt) WCAG AAA ✓ Pass

Any Text WCAG AAA ✓ Pass

If you want to check with other color combinations, try the [Color Contrast Checker](#).

YUV 154.8310, -10.2697, 27.3352

Background



This preview shows how black text looks on a background with the YUV color 154.8310, -10.2697, 27.3352.



This preview shows how white text looks on a background with the YUV color 154.8310, -10.2697, 27.3352.

Color Blindness Simulation

Color vision deficiency is a very complex topic, and I could not describe the different causes any better than Wikipedia does, so if you want to learn more, you should check out their [article about color blindness](#).

Dichromacy



Original Color

154.8310, -10.2697, 27.3352

Protanopia

153.1980, -6.9996, 5.0884

Deuteranopia

153.7760, -10.2426, 18.6134



Tritanopia

155.6060, -2.2708, 28.4095

Trichromacy



Original Color

154.8310, -10.2697, 27.3352

Protanomaly

153.6120, -8.1897, 13.4953

Deuteranomaly

154.3850, -10.5428, 21.5874

Tritanomaly

155.2100, -5.0335, 27.8798

Monochromacy



Original Color

154.8310, -10.2697, 27.3352

Achromatopsia

155.0000, 0.0000, 0.0000

Achromatomaly

155.0290, -3.9583, 9.6216

CSS Examples

Text

The CSS property to change the color of the text to YUV 154.8310, -10.2697, 27.3352 is called "color". The color property can be set on classes, ids or directly on the HTML element.

This example shows how text in the color `rgb(186, 143, 134)` looks like.

```
.text, #text, p{  
    color:rgb(186, 143, 134)  
}
```

If you want to add a text shadow in that color use the text-shadow property, you can generate a text shadow directly with our [CSS Text Shadow Generator](#).

Here you see how black text with a 4 pixel rgb(186, 143, 134) colored shadow looks like.

```
.shadow{ text-shadow: 4px 4px 2px rgb(186, 143, 134) }
```

Border

The CSS property to change the border of an element to YUV 154.8310, -10.2697, 27.3352 is called "border".

The border property can be set on classes, ids or directly on the HTML element.

This example shows the color as border, it can be applied via the CSS property "border" or "border-color".

```
.border, #border, table{ border:4px solid rgb(186, 143, 134) }
```


If only the border color should be changed use the property `border-color`.

```
.border{ border-color:rgb(186, 143, 134) }
```

If you want to add a box shadow in that color use:

Here you see how a box with a 4 pixel `rgb(186, 143, 134)` colored shadow looks like.

```
.boxshadow{ -moz-box-shadow:4px 4px 4px  
4px rgb(186, 143, 134); -webkit-box-  
shadow:4px 4px 4px 4px rgb(186, 143, 134);  
box-shadow:4px 4px 4px 4px rgb(186, 143,  
134) }
```

Background

The CSS property to change the background color of an element to YUV 154.8310, -10.2697, 27.3352 is called "background". The background property can be set on classes, ids or directly on the HTML element.

```
.background, #background, body{  
background: rgb(186, 143, 134) }
```

If only the background color should be changed can be used:

```
.background{ background-color: rgb(186,  
143, 134) }
```

This example shows the color as background, it is applied via the CSS property "background".

To optimize and compress your CSS code, you can use our [online CSS compressor and optimizer](#) based on csstidy. If you want to create a linear or radial gradient as background or border, check our [CSS Gradient Generator](#).

Hey! You found this booklet interesting? Support Converting Colors with the new Membership Option!

The pro membership hides all ads, plus gives you double the colors in the color bucket, and more awesome pro features!

[Learn more, Memberships starting at \\$2.50/m!](#)

**Follow me
on Twitter!**

@ConvertingColor