

Converting Colors

YUV(155.0220, -13.3218,
26.2907)

Have a look what the booklet for
YUV(155.0220, -13.3218, 26.2907)
contains.

YUV(155.0220, -13.3218, 26.2907)	3
<i>Conversions</i>	4
<i>Details</i>	6
<i>Harmonies</i>	12
<i>Previews</i>	24
<i>Color Blindness Simulation</i>	28
<i>CSS Examples</i>	31

Color

**YUV(155.0220, -13.3218,
26.2907)**

Conversions

Conversions Part 1

Format	Color
Hex	B99180
RGB	185, 145, 128
RGB Percent	73%, 57%, 50%
CMY	0.2745, 0.4314, 0.4980
CMYK	0.00, 0.22, 0.31, 0.27
HSL	18°, 29%, 61%
HSV	18°, 31%, 73%
XYZ	34.0293, 32.1236, 24.8290
YIQ	155.0220, 29.2970, 3.1930

Conversions

Conversions Part 2

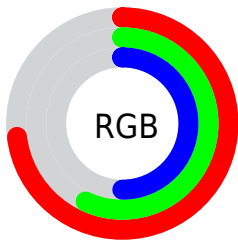
Format	Color
RYB	185, 152, 128
Decimal	12161408
CIELab	63.44, 12.60, 14.79
CIELCh	63, 19.428, 49.556
Yxy	32.1236, 0.3740, 0.3531
Android (android.graphics.Color)	4290351488 (0xFFB99180)
YUV	155.0220, -13.3218, 26.2907
Hunter-Lab	56.6777, 7.9854, 13.7010

Details

The YUV color **155.0220, -13.3218, 26.2907** is a light color, and the websafe version is hex **CC9999**. A complement of this color would be **157.9780, 13.3218, -26.2907**, and the grayscale version is **155.0000, 0.0000, 0.0000**.

A 20% lighter version of the original color is **209.8050, -14.2009, 28.2350**, and **103.3530, -12.0060, 24.2464** is the 20% darker color. If you saturate the color by 10%, you get **145.3390, -17.4221, 34.7827**, and if you desaturate by 10%, it is **164.8190, -8.7848, 17.6987**.

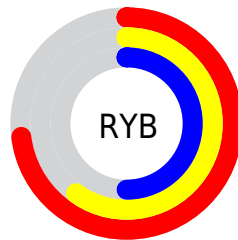
Distribution



Red (73%)

Green (57%)

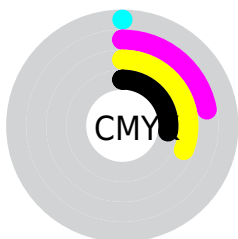
Blue (50%)



Red (73%)

Yellow (60%)

Blue (50%)

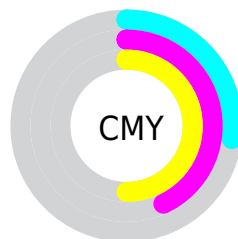


Cyan (0%)

Magenta (22%)

Yellow (31%)

Black (27%)



Cyan (27%)

Magenta (43%)

Yellow (50%)

Brightness & Saturation Gradients

These gradients show how the YUV color 155.0220, -13.3218, 26.2907 changes by changing the brightness by 10 percent. The first figure shows a shift by +10% for each color and the second figure -10%.

Similar to the brightness gradients but the following saturation gradients show a change of the YUV color 155.0220, -13.3218, 26.2907 by changing the saturation by 10% instead.

■ 155.0220,
-13.3218, 26.2907

■ 155.0220,
-13.3218, 26.2907

255.0000, 0.0000,
0.0000

■ 128.8370,
-12.7376, 25.5760

■ 209.8050,
-14.2009, 28.2350

■ 103.3530,
-12.0060, 24.2464

■ 233.2060,
-12.4266, 19.1133

■ 79.4560, -11.5638,
22.4021

■ 252.9480, -7.8624,
1.7996

■ 55.9720, -10.8322,
21.0726

■ 33.7760, -10.2426,
18.6134

■ 11.3400, -5.5906,
19.8728

■ 0.0000, 0.0000,

0.0000

■ 155.0220,
-13.3218, 26.2907

■ 155.0220,
-13.3218, 26.2907

■ 145.3390,
-17.4221, 34.7827

■ 164.8190, -8.7848,
17.6987

■ 135.5420,
-21.9592, 43.3747

■ 174.5020, -4.6845,
9.2067

■ 125.8590,
-26.0595, 51.8667

■ 184.2990, -0.1474,
0.6148

■ 116.0620,
-30.5966, 60.4586

■ 193.9820, 3.9529,
-7.8772

■ 106.3790,
-34.6968, 68.9506

■ 203.7790, 8.4900,
-16.4692

■ 96.5820, -39.2339,
77.5426

■ 213.4620, 12.5902,
-24.9612

■ 87.6000, -43.1868,
85.4198

■ 222.9170, 15.8169,
-33.2532

■ 230.5480, 12.0548,
-39.9456

■ 234.0700, 10.3185,
-43.0344

Harmonies

Analogous

The Analogous color harmony consists of three colors that are next to each other on the color wheel.



156.4660, -6.6387, 29.4093



155.0220, -13.3218, 26.2907



153.4570, -16.4943, 17.1392

Triad

The Triadic color harmony groups three colors that are evenly spaced from another and form a triangle on the color wheel.



155.0220, -13.3218, 26.2907



147.4220, -0.2080, -26.6801



154.3920, 15.5827, -4.7288

Complementary

The Complementary color scheme is a pair of colors which are on the opposite of each other on the color wheel.



155.0220, -13.3218, 26.2907



157.9780, 13.3218, -26.2907

Split Complementary

Split-complementary colors differ from the complementary color scheme. The scheme consists of three colors, the original color and two neighbors of the complement color.



151.1510, 17.6736, -22.0574



155.0220, -13.3218, 26.2907



146.1850, 9.2758, -35.2422

Square

The Square scheme is like the rectangle color scheme, but the four colors are evenly spaced on the color wheel.



155.0220, -13.3218, 26.2907



149.8060, -9.2714, -12.9849



147.5040, 15.5275, -33.7680



156.5960, 9.5662, 11.7553

Rectangle

The Rectangle color scheme consists of four colors that form a rectangle on the color wheel.



155.0220, -13.3218, 26.2907



152.2170, -15.8830, 7.7027



147.5040, 15.5275, -33.7680



153.2880, 16.6200, -10.7766

Sweetspot

The Sweet Spot groups the original color and five complimentary colors.



155.0220, -13.3218, 26.2907



228.6870, -5.2687, 9.9215



149.7170, 9.5065, 30.9432



113.2350, -3.0739, 5.9329



247.0000, 0.0000, 0.0000



120.0000, 0.0000, 0.0000

Same Dimension

The Same Dimension uses a secret algorithm to generate beautiful new colors.



155.0220, -13.3218, 26.2907



192.8730, -20.6434, 41.3304



171.4580, -21.4248, 11.8763



86.8650, -1.9054, 4.5034



73.6460, -36.3075, 72.2245



13.0680, -6.4425, 13.0954

Inverse Universe

The Inverse Universe completely reimagines the original color for something new.



157.9780, 13.3218, -26.2907



197.5400, 20.9328, -40.8156



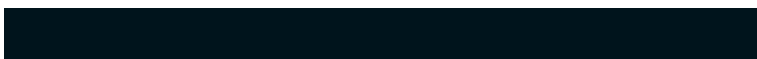
141.5420, 21.4248, -11.8763



87.5480, 2.1948, -3.9886



81.7670, 36.5969, -71.7097



14.9320, 6.4425, -13.0954

Previews

White Background



This preview shows how the YUV color 155.0220, -13.3218, 26.2907 looks on a white background.

Color Contrast Check

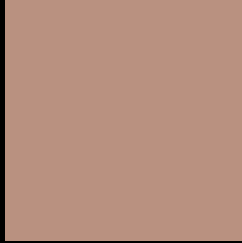
Large Text (above 18pt) WCAG AA × Fail

Any Text WCAG AA × Fail

Large Text (above 18pt) WCAG AAA × Fail

Any Text WCAG AAA × Fail

Black Background



This preview shows how the YUV color 155.0220, -13.3218, 26.2907 looks on a black background.

Color Contrast Check

Large Text (above 18pt) WCAG AA ✓ Pass

Any Text WCAG AA ✓ Pass

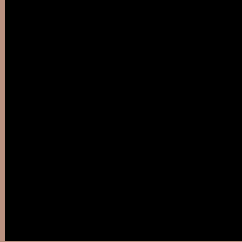
Large Text (above 18pt) WCAG AAA ✓ Pass

Any Text WCAG AAA ✓ Pass

If you want to check with other color combinations, try the [Color Contrast Checker](#).

YUV 155.0220, -13.3218, 26.2907

Background



This preview shows how black text looks on a background with the YUV color 155.0220, -13.3218, 26.2907.



This preview shows how white text looks on a background with the YUV color 155.0220, -13.3218, 26.2907.

Color Blindness Simulation

Color vision deficiency is a very complex topic, and I could not describe the different causes any better than Wikipedia does, so if you want to learn more, you should check out their [article about color blindness](#).

Dichromacy



Original Color

155.0220, -13.3218, 26.2907

Protanopia

153.2970, -10.4994, 7.6325

Deuteranopia

154.5760, -13.5950, 20.5428



Tritanopia

156.3070, -2.1234, 27.7948

Trichromacy



Original Color

155.0220, -13.3218, 26.2907

Protanomaly

153.8140, -11.2473, 14.1951

Deuteranomaly

154.8860, -13.7478, 22.9020

Tritanomaly

155.5690, -6.1965, 27.5650

Monochromacy



Original Color

155.0220, -13.3218, 26.2907

Achromatopsia

155.0000, 0.0000, 0.0000

Achromatomaly

154.8010, -4.8319, 9.8215

CSS Examples

Text

The CSS property to change the color of the text to YUV 155.0220, -13.3218, 26.2907 is called "color". The color property can be set on classes, ids or directly on the HTML element.

This example shows how text in the color `rgb(185, 145, 128)` looks like.

```
.text, #text, p{  
    color:rgb(185, 145, 128)  
}
```

If you want to add a text shadow in that color use the text-shadow property, you can generate a text shadow directly with our [CSS Text Shadow Generator](#).

Here you see how black text with a 4 pixel rgb(185, 145, 128) colored shadow looks like.

```
.shadow{ text-shadow: 4px 4px 2px rgb(185, 145, 128) }
```

Border

The CSS property to change the border of an element to YUV 155.0220, -13.3218, 26.2907 is called "border".

The border property can be set on classes, ids or directly on the HTML element.

This example shows the color as border, it can be applied via the CSS property "border" or "border-color".

```
.border, #border, table{ border:4px solid rgb(185, 145, 128) }
```


If only the border color should be changed use the property `border-color`.

```
.border{ border-color:rgb(185, 145, 128) }
```

If you want to add a box shadow in that color use:

Here you see how a box with a 4 pixel `rgb(185, 145, 128)` colored shadow looks like.

```
.boxshadow{ -moz-box-shadow:4px 4px 4px  
4px rgb(185, 145, 128); -webkit-box-  
shadow:4px 4px 4px 4px rgb(185, 145, 128);  
box-shadow:4px 4px 4px 4px rgb(185, 145,  
128) }
```

Background

The CSS property to change the background color of an element to YUV 155.0220, -13.3218, 26.2907 is called "background". The background property can be set on classes, ids or directly on the HTML element.

```
.background, #background, body{  
background: rgb(185, 145, 128) }
```

If only the background color should be changed can be used:

```
.background{ background-color: rgb(185,  
145, 128) }
```

This example shows the color as background, it is applied via the CSS property "background".

To optimize and compress your CSS code, you can use our [online CSS compressor and optimizer](#) based on csstidy. If you want to create a linear or radial gradient as background or border, check our [CSS Gradient Generator](#).

Hey! You found this booklet interesting? Support Converting Colors with the new Membership Option!

The pro membership hides all ads, plus gives you double the colors in the color bucket, and more awesome pro features!

[Learn more, Memberships starting at \\$2.50/m!](#)

**Follow me
on Twitter!**

@ConvertingColor