

Converting Colors

YUV(155.0320, -11.8478,
20.1429)

Have a look what the booklet for
YUV(155.0320, -11.8478, 20.1429)
contains.

YUV(155.0320, -11.8478, 20.1429)	3
<i>Conversions</i>	4
<i>Details</i>	6
<i>Harmonies</i>	12
<i>Previews</i>	24
<i>Color Blindness Simulation</i>	28
<i>CSS Examples</i>	31

Color

**YUV(155.0320, -11.8478,
20.1429)**

Conversions

Conversions Part 1

Format	Color
Hex	B29483
RGB	178, 148, 131
RGB Percent	70%, 58%, 51%
CMY	0.3020, 0.4196, 0.4863
CMYK	0.00, 0.17, 0.26, 0.30
HSL	22°, 23%, 61%
HSV	22°, 26%, 70%
XYZ	33.0467, 32.2835, 25.9623
YIQ	155.0320, 23.3370, 1.0730

Conversions

Conversions Part 2

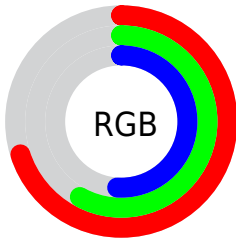
Format	Color
RYB	178, 158, 131
Decimal	11703427
CIELab	63.58, 8.59, 13.18
CIElCh	64, 15.730, 56.922
Yxy	32.2835, 0.3620, 0.3536
Android (android.graphics.Color)	4289893507 (0xFFB29483)
YUV	155.0320, -11.8478, 20.1429
Hunter-Lab	56.8186, 4.3865, 12.6814

Details

The YUV color **155.0320, -11.8478, 20.1429** is a light color, and the websafe version is hex **CC9999**. A complement of this color would be **153.9680, 11.8478, -20.1429**, and the grayscale version is **155.0000, 0.0000, 0.0000**.

A 20% lighter version of the original color is **209.5160, -12.5794, 21.4725**, and **103.6620, -10.6794, 18.7134** is the 20% darker color. If you saturate the color by 10%, you get **146.5230, -16.5268, 27.6053**, and if you desaturate by 10%, it is **163.5410, -7.1687, 12.6805**.

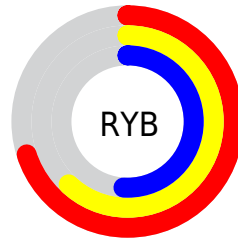
Distribution



Red (70%)

Green (58%)

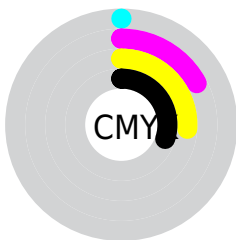
Blue (51%)



Red (70%)

Yellow (62%)

Blue (51%)

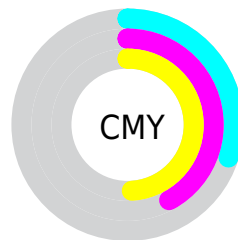


Cyan (0%)

Magenta (17%)

Yellow (26%)

Black (30%)



Cyan (30%)

Magenta (42%)

Yellow (49%)

Brightness & Saturation Gradients

These gradients show how the YUV color 155.0320, -11.8478, 20.1429 changes by changing the brightness by 10 percent. The first figure shows a shift by +10% for each color and the second figure -10%.

Similar to the brightness gradients but the following saturation gradients show a change of the YUV color 155.0320, -11.8478, 20.1429 by changing the saturation by 10% instead.

■ 155.0320,
-11.8478, 20.1429

■ 155.0320,
-11.8478, 20.1429

■ 255.0000, 0.0000,
0.0000

■ 128.8470,
-11.2636, 19.4282

■ 209.5160,
-12.5794, 21.4725

■ 103.6620,
-10.6794, 18.7134

■ 235.4230,
-11.5475, 17.1690

■ 79.7650, -10.2371,
16.8691

■ 253.2900, -6.5520,
1.4997

■ 56.2810, -9.5055,
15.5396

■ 34.6830, -9.2107,
14.3100

■ 12.4920, -6.1586,
15.3545

■ 0.0000, 0.0000,

0.0000

■ 155.0320,
-11.8478, 20.1429

■ 155.0320,
-11.8478, 20.1429

■ 146.5230,
-16.5268, 27.6053

■ 163.5410, -7.1687,
12.6805

■ 137.4270,
-20.9165, 35.5825

■ 172.6370, -2.7790,
4.7034

■ 129.0320,
-25.1588, 42.9449

■ 181.0320, 1.4632,
-2.6591

■ 120.5230,
-29.8378, 50.4073

■ 189.5410, 6.1423,
-10.1215

■ 111.4270,
-34.2275, 58.3845

■ 198.6370, 10.5320,
-18.0986

■ 102.9180,
-38.9066, 65.8469

■ 207.1460, 15.2110,
-25.5610

■ 93.8220, -43.2962,
73.8241

■ 216.1280, 19.1639,
-33.4383

■ 90.7900, -44.7595,
76.4832

■ 222.5850, 15.9806,
-39.1010

■ 229.0420, 12.7973,
-44.7638

Harmonies

Analogous

The Analogous color harmony consists of three colors that are next to each other on the color wheel.



156.0200, -6.9119, 23.6615



155.0320, -11.8478, 20.1429



153.2220, -13.4204, 11.2063

Triad

The Triadic color harmony groups three colors that are evenly spaced from another and form a triangle on the color wheel.



155.0320, -11.8478, 20.1429



148.9000, 1.5283, -23.5913



155.3880, 11.6407, -0.3403

Complementary

The Complementary color scheme is a pair of colors which are on the opposite of each other on the color wheel.



155.0320, -11.8478, 20.1429



153.9680, 11.8478, -20.1429

Split Complementary

Split-complementary colors differ from the complementary color scheme. The scheme consists of three colors, the original color and two neighbors of the complement color.



152.9840, 14.3049, -14.8950



155.0320, -11.8478, 20.1429



149.0010, 8.3805, -28.0649

Square

The Square scheme is like the rectangle color scheme, but the four colors are evenly spaced on the color wheel.



155.0320, -11.8478, 20.1429



150.0170, -5.9244, -13.1699



150.5760, 13.0270, -25.0612



156.6840, 6.0718, 12.5551

Rectangle

The Rectangle color scheme consists of four colors that form a rectangle on the color wheel.



155.0320, -11.8478, 20.1429



152.9930, -12.8145, 3.5141



150.5760, 13.0270, -25.0612



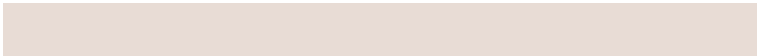
154.4090, 13.1094, -4.7437

Sweetspot

The Sweet Spot groups the original color and five complimentary colors.



155.0320, -11.8478, 20.1429



222.7900, -4.8265, 8.0772



148.5870, 6.6126, 25.7952



111.6370, -2.7790, 4.7034



245.0000, 0.0000, 0.0000



117.0000, 0.0000, 0.0000

Same Dimension

The Same Dimension uses a secret algorithm to generate beautiful new colors.



155.0320, -11.8478, 20.1429



195.9750, -18.7217, 31.5939



168.5330, -18.5038, 8.3026



85.0390, -2.4842, 3.4738



78.0320, -38.4698, 65.7469



13.0570, -6.4371, 11.3510

Inverse Universe

The Inverse Universe completely reimagines the original color for something new.



153.9680, 11.8478, -20.1429



194.0250, 18.7217, -31.5939



140.4670, 18.5038, -8.3026



84.5480, 2.1948, -3.9886



74.9680, 38.4698, -65.7469



12.3560, 6.7265, -10.8362

Previews

White Background



This preview shows how the YUV color 155.0320, -11.8478, 20.1429 looks on a white background.

Color Contrast Check

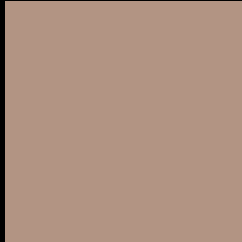
Large Text (above 18pt) WCAG AA × Fail

Any Text WCAG AA × Fail

Large Text (above 18pt) WCAG AAA × Fail

Any Text WCAG AAA × Fail

Black Background



This preview shows how the YUV color 155.0320, -11.8478, 20.1429 looks on a black background.

Color Contrast Check

Large Text (above 18pt) WCAG AA ✓ Pass

Any Text WCAG AA ✓ Pass

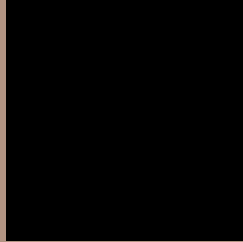
Large Text (above 18pt) WCAG AAA ✓ Pass

Any Text WCAG AAA ✓ Pass

If you want to check with other color combinations, try the [Color Contrast Checker](#).

YUV 155.0320, -11.8478, 20.1429

Background



This preview shows how black text looks on a background with the YUV color 155.0320, -11.8478, 20.1429.



This preview shows how white text looks on a background with the YUV color 155.0320, -11.8478, 20.1429.

Color Blindness Simulation

Color vision deficiency is a very complex topic, and I could not describe the different causes any better than Wikipedia does, so if you want to learn more, you should check out their [article about color blindness](#).

Dichromacy



Original Color

155.0320, -11.8478, 20.1429

Protanopia

154.1120, -9.9152, 6.9178

Deuteranopia

154.7330, -11.7004, 19.5282



Tritanopia

156.4310, -0.2125, 21.5470

Trichromacy



Original Color

155.0320, -11.8478, 20.1429

Protanomaly

154.6180, -10.6577, 11.7360

Deuteranomaly

154.7330, -11.7004, 19.5282

Tritanomaly

155.6930, -4.2856, 21.3172

Monochromacy



Original Color

155.0320, -11.8478, 20.1429

Achromatopsia

155.0000, 0.0000, 0.0000

Achromatomaly

154.6050, -4.2423, 7.3624

CSS Examples

Text

The CSS property to change the color of the text to YUV 155.0320, -11.8478, 20.1429 is called "color". The color property can be set on classes, ids or directly on the HTML element.

This example shows how text in the color `rgb(178, 148, 131)` looks like.

```
.text, #text, p{  
    color:rgb(178, 148, 131)  
}
```

If you want to add a text shadow in that color use the text-shadow property, you can generate a text shadow directly with our [CSS Text Shadow Generator](#).

Here you see how black text with a 4 pixel rgb(178, 148, 131) colored shadow looks like.

```
.shadow{ text-shadow: 4px 4px 2px rgb(178, 148, 131) }
```

Border

The CSS property to change the border of an element to YUV 155.0320, -11.8478, 20.1429 is called "border".

The border property can be set on classes, ids or directly on the HTML element.

This example shows the color as border, it can be applied via the CSS property "border" or "border-color".

```
.border, #border, table{ border:4px solid rgb(178, 148, 131) }
```


If only the border color should be changed use the property `border-color`.

```
.border{ border-color:rgb(178, 148, 131) }
```

If you want to add a box shadow in that color use:

Here you see how a box with a 4 pixel `rgb(178, 148, 131)` colored shadow looks like.

```
.boxshadow{ -moz-box-shadow:4px 4px 4px  
4px rgb(178, 148, 131); -webkit-box-  
shadow:4px 4px 4px 4px rgb(178, 148, 131);  
box-shadow:4px 4px 4px 4px rgb(178, 148,  
131) }
```

Background

The CSS property to change the background color of an element to YUV 155.0320, -11.8478, 20.1429 is called "background". The background property can be set on classes, ids or directly on the HTML element.

```
.background, #background, body{  
background: rgb(178, 148, 131) }
```

If only the background color should be changed can be used:

```
.background{ background-color: rgb(178,  
148, 131) }
```

This example shows the color as background, it is applied via the CSS property "background".

To optimize and compress your CSS code, you can use our [online CSS compressor and optimizer](#) based on csstidy. If you want to create a linear or radial gradient as background or border, check our [CSS Gradient Generator](#).

Hey! You found this booklet interesting? Support Converting Colors with the new Membership Option!

The pro membership hides all ads, plus gives you double the colors in the color bucket, and more awesome pro features!

[Learn more, Memberships starting at \\$2.50/m!](#)

**Follow me
on Twitter!**

@ConvertingColor