

Converting Colors

YUV(155.4070, -13.5117,
87.3431)

Have a look what the booklet for
YUV(155.4070, -13.5117, 87.3431)
contains.

YUV(155.4070, -13.5117, 87.3431)	3
<i>Conversions</i>	4
<i>Details</i>	6
<i>Harmonies</i>	12
<i>Previews</i>	24
<i>Color Blindness Simulation</i>	28
<i>CSS Examples</i>	31

Color

**YUV(155.4070, -13.5117,
87.3431)**

Conversions

Conversions Part 1

Format	Color
Hex	FF6E80
RGB	255, 110, 128
RGB Percent	100%, 43%, 50%
CMY	0.0000, 0.5686, 0.4980
CMYK	0.00, 0.57, 0.50, 0.00
HSL	353°, 100%, 72%
HSV	353°, 57%, 100%
XYZ	50.7122, 33.9704, 24.3062
YIQ	155.4070, 80.6420, 36.3380

Conversions

Conversions Part 2

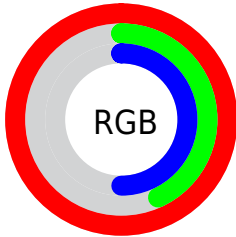
Format	Color
R_{YB}	255, 110, 128
Decimal	16739968
CIE _{Lab}	64.94, 56.66, 18.23
CIE _{LCh}	65, 59.519, 17.831
Yxy	33.9704, 0.4653, 0.3117
Android (android.graphics.Color)	4294930048 (0xFFFF6E80)
YUV	155.4070, -13.5117, 87.3431
Hunter-Lab	58.2841, 53.3132, 16.0732

Details

The YUV color **155.4070, -13.5117, 87.3431** is a light color, and the websafe version is hex **FF6666**. A complement of this color would be **209.5930, 13.5117, -87.3431**, and the grayscale version is **155.0000, 0.0000, 0.0000**.

A 20% lighter version of the original color is **194.3210, -6.5673, 53.2155**, and **97.8240, -9.2802, 83.4694** is the 20% darker color. If you saturate the color by 10%, you get **138.2240, -15.8864, 102.4126**, and if you desaturate by 10%, it is **173.1770, -11.4263, 71.7588**.

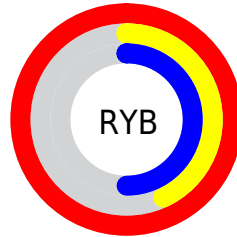
Distribution



Red (100%)

Green (43%)

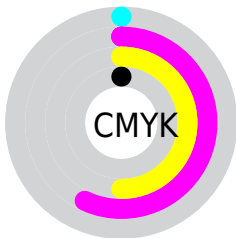
Blue (50%)



Red (100%)

Yellow (43%)

Blue (50%)

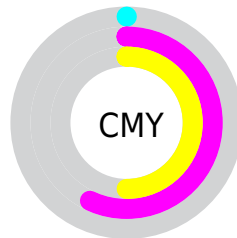


Cyan (0%)

Magenta (57%)

Yellow (50%)

Black (0%)



Cyan (0%)

Magenta (57%)

Yellow (50%)

Brightness & Saturation Gradients

These gradients show how the YUV color 155.4070, -13.5117, 87.3431 changes by changing the brightness by 10 percent. The first figure shows a shift by +10% for each color and the second figure -10%.

Similar to the brightness gradients but the following saturation gradients show a change of the YUV color 155.4070, -13.5117, 87.3431 by changing the saturation by 10% instead.

155.4070,
-13.5117, 87.3431

155.4070,
-13.5117, 87.3431

255.0000, 0.0000,
0.0000

126.8520,
-11.7590, 85.1988

194.3210, -6.5673,
53.2155

97.8240, -9.2802,
83.4694

214.4220, -3.1660,
35.5869

65.1000, -4.4863,
85.8583

234.6370, 0.6720,
17.8584

43.7570, -4.3172,
78.2661

253.8260, 0.5788,
1.0296

32.8060, -8.7784,
62.4371

22.5390, -10.6187,
46.0083

13.9820, -5.9071,

28.0798

■ 0.0000, 0.0000,
0.0000

■ 155.4070,
-13.5117, 87.3431

■ 155.4070,
-13.5117, 87.3431

■ 138.2240,
-15.8864, 102.4126

■ 173.1770,
-11.4263, 71.7588

■ 120.3400,
-18.4086, 118.0968

■ 190.4740, -8.6147,
56.5893

■ 102.5700,
-20.4940, 133.6811

■ 208.2440, -6.5293,
41.0050

■ 85.3870, -22.8688,
148.7506

■ 225.4270, -4.1545,
25.9355

■ 79.8930, -23.6112,
153.5688

■ 243.3110, -1.6323,
10.2513

255.0000, 0.0000,
0.0000

Harmonies

Analogous

The Analogous color harmony consists of three colors that are next to each other on the color wheel.



158.8610, 11.4075, 74.6669



155.4070, -13.5117, 87.3431



154.8420, -36.8971, 74.6836

Triad

The Triadic color harmony groups three colors that are evenly spaced from another and form a triangle on the color wheel.



155.4070, -13.5117, 87.3431



140.4670, -28.8242, -41.6286



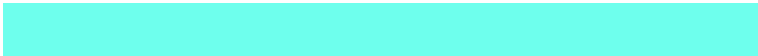
128.8600, 62.1870, -113.0102

Complementary

The Complementary color scheme is a pair of colors which are on the opposite of each other on the color wheel.



155.4070, -13.5117, 87.3431



209.5930, 13.5117, -87.3431

Split Complementary

Split-complementary colors differ from the complementary color scheme. The scheme consists of three colors, the original color and two neighbors of the complement color.



132.4500, 50.5572, -116.1586



155.4070, -13.5117, 87.3431



121.9960, 5.4250, -106.9905

Square

The Square scheme is like the rectangle color scheme, but the four colors are evenly spaced on the color wheel.



155.4070, -13.5117, 87.3431



148.5580, -50.0681, 5.6496



128.9670, 29.5963, -113.1041



153.8750, 49.8546, -30.5854

Rectangle

The Rectangle color scheme consists of four colors that form a rectangle on the color wheel.



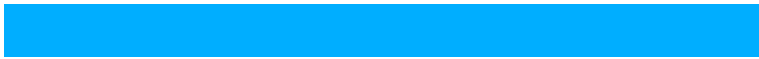
155.4070, -13.5117, 87.3431



153.7460, -48.1888, 56.3508



128.9670, 29.5963, -113.1041



131.2080, 61.0295, -115.0694

Sweetspot

The Sweet Spot groups the original color and five complimentary colors.



155.4070, -13.5117, 87.3431



225.4270, -4.1545, 25.9355



164.2040, 44.7624, 62.9651



110.1160, -2.5222, 15.6843



0.0000, 0.0000, 0.0000



128.0000, 0.0000, 0.0000

Same Dimension

The Same Dimension uses a secret algorithm to generate beautiful new colors.



155.4070, -13.5117, 87.3431



136.1210, -16.3287, 104.2569



184.4660, -36.7117, 61.8583



119.0010, -1.4795, 7.8921



59.8450, -17.6716, 115.0229



20.0480, -5.9397, 38.5459

Inverse Universe

The Inverse Universe completely reimagines the original color for something new.



155.4070, -13.5117, 87.3431



136.1210, -16.3287, 104.2569



180.5340, 36.7117, -61.8583



119.0010, -1.4795, 7.8921



59.8450, -17.6716, 115.0229



20.0480, -5.9397, 38.5459

Previews

White Background



This preview shows how the YUV color 155.4070, -13.5117, 87.3431 looks on a white background.

Color Contrast Check

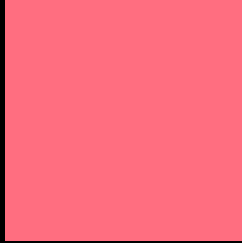
Large Text (above 18pt) WCAG AA × Fail

Any Text WCAG AA × Fail

Large Text (above 18pt) WCAG AAA × Fail

Any Text WCAG AAA × Fail

Black Background



This preview shows how the YUV color 155.4070, -13.5117, 87.3431 looks on a black background.

Color Contrast Check

Large Text (above 18pt) WCAG AA ✓ Pass

Any Text WCAG AA ✓ Pass

Large Text (above 18pt) WCAG AAA ✓ Pass

Any Text WCAG AAA ✓ Pass

If you want to check with other color combinations, try the [Color Contrast Checker](#).

YUV 155.4070, -13.5117, 87.3431

Background



This preview shows how black text looks on a background with the YUV color 155.4070, -13.5117, 87.3431.



This preview shows how white text looks on a background with the YUV color 155.4070, -13.5117,

Color Blindness Simulation

Color vision deficiency is a very complex topic, and I could not describe the different causes any better than Wikipedia does, so if you want to learn more, you should check out their [article about color blindness](#).

Dichromacy



Original Color

155.4070, -13.5117, 87.3431

Protanopia

157.9250, -2.9210, 3.5738

Deuteranopia

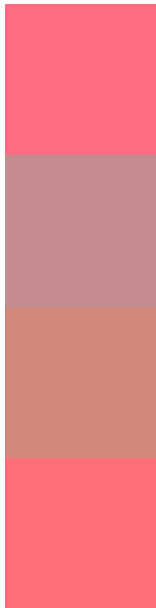
158.3330, -18.4052, 23.3870



Tritanopia

155.2560, -17.8742, 86.5985

Trichromacy



Original Color

155.4070, -13.5117, 87.3431

Protanomaly

157.0860, -6.9444, 34.1276

Deuteranomaly

157.3450, -16.4391, 46.1784

Tritanomaly

155.0110, -16.2744, 86.8134

Monochromacy



Original Color

155.4070, -13.5117, 87.3431

Achromatopsia

155.0000, 0.0000, 0.0000

Achromatomaly

155.2320, -5.0444, 31.3685

CSS Examples

Text

The CSS property to change the color of the text to YUV 155.4070, -13.5117, 87.3431 is called "color". The color property can be set on classes, ids or directly on the HTML element.

This example shows how text in the color `rgb(255, 110, 128)` looks like.

```
.text, #text, p{  
    color:rgb(255, 110, 128)  
}
```

If you want to add a text shadow in that color use the text-shadow property, you can generate a text shadow directly with our [CSS Text Shadow Generator](#).

Here you see how black text with a 4 pixel rgb(255, 110, 128) colored shadow looks like.

```
.shadow{ text-shadow: 4px 4px 2px rgb(255, 110, 128) }
```

Border

The CSS property to change the border of an element to YUV 155.4070, -13.5117, 87.3431 is called "border".

The border property can be set on classes, ids or directly on the HTML element.

This example shows the color as border, it can be applied via the CSS property "border" or "border-color".

```
.border, #border, table{ border:4px solid rgb(255, 110, 128) }
```


If only the border color should be changed use the property `border-color`.

```
.border{ border-color:rgb(255, 110, 128) }
```

If you want to add a box shadow in that color use:

Here you see how a box with a 4 pixel `rgb(255, 110, 128)` colored shadow looks like.

```
.boxshadow{ -moz-box-shadow:4px 4px 4px  
4px rgb(255, 110, 128); -webkit-box-  
shadow:4px 4px 4px 4px rgb(255, 110, 128);  
box-shadow:4px 4px 4px 4px rgb(255, 110,  
128) }
```

Background

The CSS property to change the background color of an element to YUV 155.4070, -13.5117, 87.3431 is called "background". The background property can be set on classes, ids or directly on the HTML element.

```
.background, #background, body{  
background: rgb(255, 110, 128) }
```

If only the background color should be changed can be used:

```
.background{ background-color: rgb(255,  
110, 128) }
```

This example shows the color as background, it is applied via the CSS property "background".

To optimize and compress your CSS code, you can use our [online CSS compressor and optimizer](#) based on csstidy. If you want to create a linear or radial gradient as background or border, check our [CSS Gradient Generator](#).

Hey! You found this booklet interesting? Support Converting Colors with the new Membership Option!

The pro membership hides all ads, plus gives you double the colors in the color bucket, and more awesome pro features!

[Learn more, Memberships starting at \\$2.50/m!](#)

**Follow me
on Twitter!**

@ConvertingColor