

Converting Colors

YUV(155.4790, -16.5051,
20.6279)

Have a look what the booklet for
YUV(155.4790, -16.5051, 20.6279)
contains.

YUV(155.4790, -16.5051, 20.6279)	3
<i>Conversions</i>	4
<i>Details</i>	6
<i>Harmonies</i>	12
<i>Previews</i>	24
<i>Color Blindness Simulation</i>	28
<i>CSS Examples</i>	31

Color

**YUV(155.4790, -16.5051,
20.6279)**

Conversions

Conversions Part 1

Format	Color
Hex	B3967A
RGB	179, 150, 122
RGB Percent	70%, 59%, 48%
CMY	0.2980, 0.4118, 0.5216
CMYK	0.00, 0.16, 0.32, 0.30
HSL	29°, 27%, 59%
HSV	29°, 32%, 70%
XYZ	33.0096, 32.8015, 23.0039
YIQ	155.4790, 26.2720, -2.5600

Conversions

Conversions Part 2

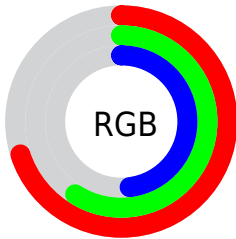
Format	Color
RYB	179, 177, 122
Decimal	11769466
CIELab	64.00, 6.63, 18.81
CIELCh	64, 19.947, 70.590
Yxy	32.8015, 0.3717, 0.3693
Android (android.graphics.Color)	4289959546 (0xFFB3967A)
YUV	155.4790, -16.5051, 20.6279
Hunter-Lab	57.2726, 2.6530, 16.2767

Details

The YUV color **155.4790, -16.5051, 20.6279** is a light color, and the websafe version is hex **CC9966**. A complement of this color would be **145.5210, 16.5051, -20.6279**, and the grayscale version is **156.0000, 0.0000, 0.0000**.

A 20% lighter version of the original color is **210.2620, -17.3842, 22.5722**, and **103.8100, -15.1893, 18.5836** is the 20% darker color. If you saturate the color by 10%, you get **148.1440, -21.7630, 27.0607**, and if you desaturate by 10%, it is **162.8140, -11.2473, 14.1951**.

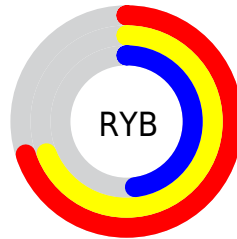
Distribution



Red (70%)

Green (59%)

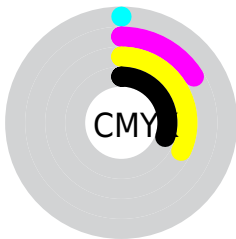
Blue (48%)



Red (70%)

Yellow (69%)

Blue (48%)

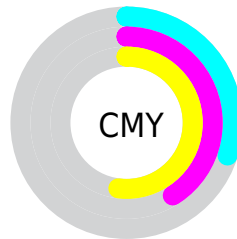


Cyan (0%)

Magenta (16%)

Yellow (32%)

Black (30%)



Cyan (30%)

Magenta (41%)

Yellow (52%)

Brightness & Saturation Gradients

These gradients show how the YUV color 155.4790, -16.5051, 20.6279 changes by changing the brightness by 10 percent. The first figure shows a shift by +10% for each color and the second figure -10%.

Similar to the brightness gradients but the following saturation gradients show a change of the YUV color 155.4790, -16.5051, 20.6279 by changing the saturation by 10% instead.

■ 155.4790,
-16.5051, 20.6279

■ 155.4790,
-16.5051, 20.6279

■ 255.0000, 0.0000,
0.0000

■ 129.2940,
-15.9209, 19.9132

■ 210.2620,
-17.3842, 22.5722

■ 103.8100,
-15.1893, 18.5836

■ 235.4570,
-16.4943, 17.1392

■ 79.6250, -14.6051,
17.8689

■ 252.1500,
-10.9200, 2.4994

■ 56.8420, -13.7261,
15.9246

■ 34.6030, -14.5943,
14.3802

■ 13.9540, -6.8793,
13.1953

■ 0.0000, 0.0000,

0.0000

■ 155.4790,
-16.5051, 20.6279

■ 155.4790,
-16.5051, 20.6279

■ 148.1440,
-21.7630, 27.0607

■ 162.8140,
-11.2473, 14.1951

■ 140.8090,
-27.0208, 33.4935

■ 170.1490, -5.9895,
7.7623

■ 133.4740,
-32.2787, 39.9263

■ 177.4840, -0.7316,
1.3295

■ 126.1390,
-37.5365, 46.3591

■ 184.8190, 4.5262,
-5.1033

■ 118.3310,
-42.0682, 53.2067

■ 192.6270, 9.0579,
-11.9509

■ 110.9960,
-47.3260, 59.6395

■ 199.9620, 14.3157,
-18.3837

■ 105.1770,
-51.8523, 64.7428

■ 207.2970, 19.5736,
-24.8165

■ 213.4920, 20.4634,
-30.2495

■ 218.7750, 17.8589,
-34.8827

Harmonies

Analogous

The Analogous color harmony consists of three colors that are next to each other on the color wheel.



157.0870, -11.8749, 28.8647



155.4790, -16.5051, 20.6279



153.6900, -16.6092, 7.2879

Triad

The Triadic color harmony groups three colors that are evenly spaced from another and form a triangle on the color wheel.



155.4790, -16.5051, 20.6279



147.5010, 6.6550, -34.6424



157.2580, 12.1978, 7.6667

Complementary

The Complementary color scheme is a pair of colors which are on the opposite of each other on the color wheel.



155.4790, -16.5051, 20.6279



145.5210, 16.5051, -20.6279

Split Complementary

Split-complementary colors differ from the complementary color scheme. The scheme consists of three colors, the original color and two neighbors of the complement color.



155.4020, 17.0568, -10.8766



155.4790, -16.5051, 20.6279



148.2540, 14.6648, -37.0568

Square

The Square scheme is like the rectangle color scheme, but the four colors are evenly spaced on the color wheel.



155.4790, -16.5051, 20.6279



149.0480, -2.9817, -23.7211



151.2320, 18.1266, -27.3905



158.2830, 4.2975, 21.6768

Rectangle

The Rectangle color scheme consists of four colors that form a rectangle on the color wheel.



155.4790, -16.5051, 20.6279



152.0200, -13.8139, -2.6485



151.2320, 18.1266, -27.3905



156.7950, 14.3981, 1.9338

Sweetspot

The Sweet Spot groups the original color and five complimentary colors.



155.4790, -16.5051, 20.6279



222.3340, -6.5737, 8.4771



142.3490, 4.2649, 32.1429



111.2950, -4.0894, 5.0033



245.0000, 0.0000, 0.0000



117.0000, 0.0000, 0.0000

Same Dimension

The Same Dimension uses a secret algorithm to generate beautiful new colors.



155.4790, -16.5051, 20.6279



195.5530, -25.4156, 31.9640



171.9150, -24.6081, 6.2135



85.6260, -2.7736, 2.9590



89.7720, -44.2576, 55.4510



15.4050, -7.5947, 9.2918

Inverse Universe

The Inverse Universe completely reimagines the original color for something new.



145.5210, 16.5051, -20.6279



180.4470, 25.4156, -31.9640



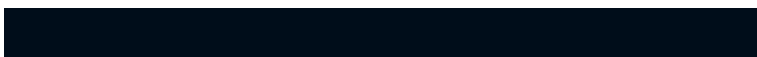
129.0850, 24.6081, -6.2135



83.9610, 2.4842, -3.4738



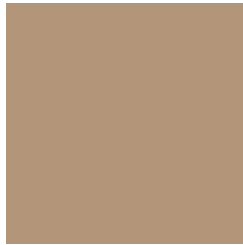
63.2280, 44.2576, -55.4510



10.5950, 7.5947, -9.2918

Previews

White Background



This preview shows how the YUV color 155.4790, -16.5051, 20.6279 looks on a white background.

Color Contrast Check

Large Text (above 18pt) WCAG AA × Fail

Any Text WCAG AA × Fail

Large Text (above 18pt) WCAG AAA × Fail

Any Text WCAG AAA × Fail

Black Background



This preview shows how the YUV color 155.4790, -16.5051, 20.6279 looks on a black background.

Color Contrast Check

Large Text (above 18pt) WCAG AA ✓ Pass

Any Text WCAG AA ✓ Pass

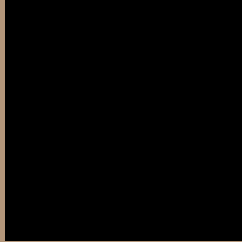
Large Text (above 18pt) WCAG AAA ✓ Pass

Any Text WCAG AAA ✓ Pass

If you want to check with other color combinations, try the [Color Contrast Checker](#).

YUV 155.4790, -16.5051, 20.6279

Background



This preview shows how black text looks on a background with the YUV color 155.4790, -16.5051, 20.6279.



This preview shows how white text looks on a background with the YUV color 155.4790, -16.5051, 20.6279.

Color Blindness Simulation

Color vision deficiency is a very complex topic, and I could not describe the different causes any better than Wikipedia does, so if you want to learn more, you should check out their [article about color blindness](#).

Dichromacy



Original Color

155.4790, -16.5051, 20.6279

Protanopia

154.4560, -15.0148, 9.2471

Deuteranopia

155.4900, -16.5106, 22.3723



Tritanopia

157.6160, -0.7967, 22.2618

Trichromacy



Original Color

155.4790, -16.5051, 20.6279

Protanomaly

154.6630, -15.6099, 13.4505

Deuteranomaly

155.1910, -16.3632, 21.7575

Tritanomaly

157.1230, -6.4696, 21.8171

Monochromacy



Original Color

155.4790, -16.5051, 20.6279

Achromatopsia

155.0000, 0.0000, 0.0000

Achromatomaly

155.1490, -5.9895, 7.7623

CSS Examples

Text

The CSS property to change the color of the text to YUV 155.4790, -16.5051, 20.6279 is called "color". The color property can be set on classes, ids or directly on the HTML element.

This example shows how text in the color `rgb(179, 150, 122)` looks like.

```
.text, #text, p{  
    color:rgb(179, 150, 122)  
}
```

If you want to add a text shadow in that color use the text-shadow property, you can generate a text shadow directly with our [CSS Text Shadow Generator](#).

Here you see how black text with a 4 pixel rgb(179, 150, 122) colored shadow looks like.

```
.shadow{ text-shadow: 4px 4px 2px rgb(179, 150, 122) }
```

Border

The CSS property to change the border of an element to YUV 155.4790, -16.5051, 20.6279 is called "border".

The border property can be set on classes, ids or directly on the HTML element.

This example shows the color as border, it can be applied via the CSS property "border" or "border-color".

```
.border, #border, table{ border:4px solid rgb(179, 150, 122) }
```


If only the border color should be changed use the property `border-color`.

```
.border{ border-color:rgb(179, 150, 122) }
```

If you want to add a box shadow in that color use:

Here you see how a box with a 4 pixel `rgb(179, 150, 122)` colored shadow looks like.

```
.boxshadow{ -moz-box-shadow:4px 4px 4px  
4px rgb(179, 150, 122); -webkit-box-  
shadow:4px 4px 4px 4px rgb(179, 150, 122);  
box-shadow:4px 4px 4px 4px rgb(179, 150,  
122) }
```

Background

The CSS property to change the background color of an element to YUV 155.4790, -16.5051, 20.6279 is called "background". The background property can be set on classes, ids or directly on the HTML element.

```
.background, #background, body{  
background: rgb(179, 150, 122) }
```

If only the background color should be changed can be used:

```
.background{ background-color: rgb(179,  
150, 122) }
```

This example shows the color as background, it is applied via the CSS property "background".

To optimize and compress your CSS code, you can use our [online CSS compressor and optimizer](#) based on csstidy. If you want to create a linear or radial gradient as background or border, check our [CSS Gradient Generator](#).

Hey! You found this booklet interesting? Support Converting Colors with the new Membership Option!

The pro membership hides all ads, plus gives you double the colors in the color bucket, and more awesome pro features!

[Learn more, Memberships starting at \\$2.50/m!](#)

**Follow me
on Twitter!**

@ConvertingColor