

Converting Colors

YUV(155.6250, -0.8011,
70.4889)

Have a look what the booklet for
YUV(155.6250, -0.8011, 70.4889)
contains.

| | |
|--|----|
| YUV(155.6250, -0.8011, 70.4889) | 3 |
| <i>Conversions</i> | 4 |
| <i>Details</i> | 6 |
| <i>Harmonies</i> | 12 |
| <i>Previews</i> | 24 |
| <i>Color Blindness Simulation</i> | 28 |
| <i>CSS Examples</i> | 31 |

Color

**YUV(155.6250, -0.8011,
70.4889)**

Conversions

Conversions Part 1

| Format | Color |
|-------------|----------------------------|
| Hex | EC739A |
| RGB | 236, 115, 154 |
| RGB Percent | 93%, 45%, 60% |
| CMY | 0.0745, 0.5490, 0.3961 |
| CMYK | 0.00, 0.51, 0.35, 0.07 |
| HSL | 341°, 76%, 69% |
| HSV | 341°, 51%, 93% |
| XYZ | 46.5555, 32.4274, 34.3772 |
| YIQ | 155.6250, 59.5970, 37.7810 |

Conversions

Conversions Part 2

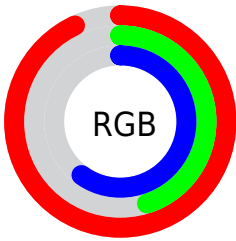
| Format | Color |
|-------------------------------------|-------------------------------|
| R _Y B | 236, 115, 154 |
| Decimal | 15496090 |
| CIE Lab | 63.69, 50.63, 1.22 |
| CIE LCh | 64, 50.641, 1.378 |
| Yxy | 32.4274, 0.4107, 0.2861 |
| Android (android.graphics.Color) | 4293686170 (0xFFEC739A) |
| YUV | 155.6250, -0.8011, 70.4889 |
| Hunter-Lab | 56.9451, 46.2790, 4.0687 |

Details

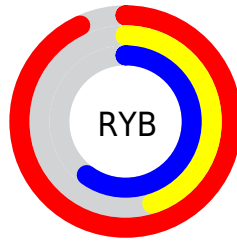
The YUV color **155.6250, -0.8011, 70.4889** is a light color, and the websafe version is hex **FF6699**. A complement of this color would be **195.3750, 0.8011, -70.4889**, and the grayscale version is **156.0000, 0.0000, 0.0000**.

A 20% lighter version of the original color is **199.7470, 4.0687, 48.4569**, and **100.4720, 1.2463, 67.1151** is the 20% darker color. If you saturate the color by 10%, you get **139.7130, -0.8445, 84.4437**, and if you desaturate by 10%, it is **171.5370, -0.7577, 56.5341**.

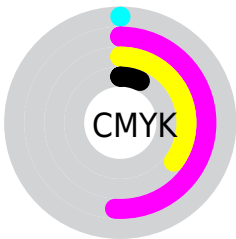
Distribution



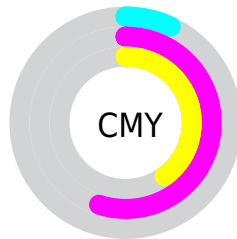
- Red (93%)
- Green (45%)
- Blue (60%)



- Red (93%)
- Yellow (45%)
- Blue (60%)



- Cyan (0%)
- Magenta (51%)
- Yellow (35%)
- Black (7%)



- Cyan (7%)
- Magenta (55%)
- Yellow (40%)

Brightness & Saturation Gradients

These gradients show how the YUV color 155.6250, -0.8011, 70.4889 changes by changing the brightness by 10 percent. The first figure shows a shift by +10% for each color and the second figure -10%.

Similar to the brightness gradients but the following saturation gradients show a change of the YUV color 155.6250, -0.8011, 70.4889 by changing the saturation by 10% instead.


 155.6250, -0.8011,
70.4889


 155.6250, -0.8011,
70.4889

255.0000, 0.0000,
0.0000

 127.8420, 0.0779,
68.5446

 199.7470, 4.0687,
48.4569

 100.4720, 1.2463,
67.1151


 219.3750, 8.1961,
31.2431

 71.4550, 3.7197,
67.1300

 238.5640, 8.1029,
14.4144

 42.2640, 6.7718,
68.1745

 31.4980, 1.7265,
53.0603

 20.9170, -3.9031,
38.6608

 11.1770, -5.0173,

22.6468

■ 0.0000, 0.0000,
0.0000

■ 155.6250, -0.8011,
70.4889

■ 155.6250, -0.8011,
70.4889

■ 139.7130, -0.8445,
84.4437

■ 171.5370, -0.7577,
56.5341

■ 124.3880, -1.1773,
97.8837

■ 186.8620, -0.4250,
43.0940

■ 108.4760, -1.2207,
111.8385

■ 202.7740, -0.3816,
29.1392

■ 93.1510, -1.5534,
125.2786

■ 218.0990, -0.0488,
15.6992

■ 79.2280, -1.5914,
137.4890

■ 234.0110, -0.0054,
1.7444

■ 248.7490, 0.6167,
-11.1809

■ 249.3190, 2.8007,
-11.6808

Harmonies

Analogous

The Analogous color harmony consists of three colors that are next to each other on the color wheel.



158.4490, 19.4986, 46.0872



155.6250, -0.8011, 70.4889



153.8320, -21.6092, 71.1843

Triad

The Triadic color harmony groups three colors that are evenly spaced from another and form a triangle on the color wheel.



155.6250, -0.8011, 70.4889



144.6450, -35.3210, -11.0897



126.3520, 52.5775, -110.8107

Complementary

The Complementary color scheme is a pair of colors which are on the opposite of each other on the color wheel.



155.6250, -0.8011, 70.4889



195.3750, 0.8011, -70.4889

Split Complementary

Split-complementary colors differ from the complementary color scheme. The scheme consists of three colors, the original color and two neighbors of the complement color.



126.1120, 36.4268, -110.6002



155.6250, -0.8011, 70.4889



135.2060, -12.9196, -56.3087

Square

The Square scheme is like the rectangle color scheme, but the four colors are evenly spaced on the color wheel.



155.6250, -0.8011, 70.4889



149.8730, -44.3074, 24.6674



121.5690, 16.4815, -106.6160



141.1930, 50.6839, -63.3133

Rectangle

The Rectangle color scheme consists of four colors that form a rectangle on the color wheel.



155.6250, -0.8011, 70.4889



152.6770, -33.3648, 61.6733



121.5690, 16.4815, -106.6160



127.0870, 47.7781, -111.4553

Sweetspot

The Sweet Spot groups the original color and five complimentary colors.



155.6250, -0.8011, 70.4889



229.7300, -0.3599, 22.1618



153.0130, 40.9126, 37.6996



112.6750, -0.3328, 13.4400



0.0000, 0.0000, 0.0000



128.0000, 0.0000, 0.0000

Same Dimension

The Same Dimension uses a secret algorithm to generate beautiful new colors.



155.6250, -0.8011, 70.4889



150.0560, -1.0136, 92.0359



162.9190, -23.6241, 64.0920



109.6310, -0.3111, 6.4626



60.7310, -1.3464, 105.4759



18.0840, -0.5344, 31.4983

Inverse Universe

The Inverse Universe completely reimagines the original color for something new.



155.6250, -0.8011, 70.4889



150.0560, -1.0136, 92.0359



188.0810, 23.6241, -64.0920



109.6310, -0.3111, 6.4626



60.7310, -1.3464, 105.4759



18.0840, -0.5344, 31.4983

Previews

White Background



This preview shows how the YUV color 155.6250, -0.8011, 70.4889 looks on a white background.

Color Contrast Check

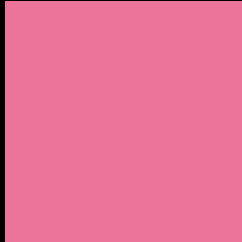
Large Text (above 18pt) WCAG AA × Fail

Any Text WCAG AA × Fail

Large Text (above 18pt) WCAG AAA × Fail

Any Text WCAG AAA × Fail

Black Background



This preview shows how the YUV color 155.6250, -0.8011, 70.4889 looks on a black background.

Color Contrast Check

Large Text (above 18pt) WCAG AA ✓ Pass

Any Text WCAG AA ✓ Pass

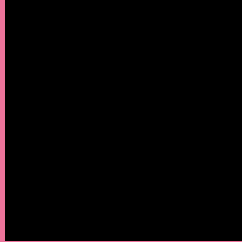
Large Text (above 18pt) WCAG AAA ✓ Pass

Any Text WCAG AAA ✓ Pass

If you want to check with other color combinations, try the [Color Contrast Checker](#).

YUV 155.6250, -0.8011, 70.4889

Background



This preview shows how black text looks on a background with the YUV color 155.6250, -0.8011, 70.4889.



This preview shows how white text looks on a background with the YUV color 155.6250, -0.8011,

Color Blindness Simulation

Color vision deficiency is a very complex topic, and I could not describe the different causes any better than Wikipedia does, so if you want to learn more, you should check out their [article about color blindness](#).

Dichromacy



Original Color

155.6250, -0.8011, 70.4889

Protanopia

155.7250, 10.4886, -4.1438

Deuteranopia

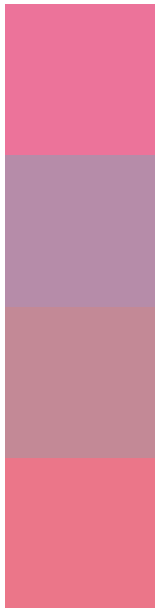
156.3500, -4.1166, 13.7250



Tritanopia

154.9980, -13.3100, 69.2848

Trichromacy



Original Color

155.6250, -0.8011, 70.4889

Protanomaly

155.8640, 6.4760, 22.9213

Deuteranomaly

155.8240, -2.8712, 34.3574

Tritanomaly

155.1490, -8.9475, 70.0293

Monochromacy



Original Color

155.6250, -0.8011, 70.4889

Achromatopsia

156.0000, 0.0000, 0.0000

Achromatomaly

155.7520, -0.3707, 25.6505

CSS Examples

Text

The CSS property to change the color of the text to YUV 155.6250, -0.8011, 70.4889 is called "color". The color property can be set on classes, ids or directly on the HTML element.

This example shows how text in the color `rgb(236, 115, 154)` looks like.

```
.text, #text, p{  
    color:rgb(236, 115, 154)  
}
```

If you want to add a text shadow in that color use the text-shadow property, you can generate a text shadow directly with our [CSS Text Shadow Generator](#).

Here you see how black text with a 4 pixel rgb(236, 115, 154) colored shadow looks like.

```
.shadow{ text-shadow: 4px 4px 2px rgb(236, 115, 154) }
```

Border

The CSS property to change the border of an element to YUV 155.6250, -0.8011, 70.4889 is called "border". The border property can be set on classes, ids or directly on the HTML element.

This example shows the color as border, it can be applied via the CSS property "border" or "border-color".

```
.border, #border, table{ border:4px solid rgb(236, 115, 154) }
```


If only the border color should be changed use the property `border-color`.

```
.border{ border-color:rgb(236, 115, 154) }
```

If you want to add a box shadow in that color use:

Here you see how a box with a 4 pixel `rgb(236, 115, 154)` colored shadow looks like.

```
.boxshadow{ -moz-box-shadow:4px 4px 4px  
4px rgb(236, 115, 154); -webkit-box-  
shadow:4px 4px 4px 4px rgb(236, 115, 154);  
box-shadow:4px 4px 4px 4px rgb(236, 115,  
154) }
```

Background

The CSS property to change the background color of an element to YUV 155.6250, -0.8011, 70.4889 is called "background". The background property can be set on classes, ids or directly on the HTML element.

```
.background, #background, body{  
background: rgb(236, 115, 154) }
```

If only the background color should be changed can be used:

```
.background{ background-color: rgb(236,  
115, 154) }
```

This example shows the color as background, it is applied via the CSS property "background".

To optimize and compress your CSS code, you can use our [online CSS compressor and optimizer](#) based on csstidy. If you want to create a linear or radial gradient as background or border, check our [CSS Gradient Generator](#).

Hey! You found this booklet interesting? Support Converting Colors with the new Membership Option!

The pro membership hides all ads, plus gives you double the colors in the color bucket, and more awesome pro features!

[Learn more, Memberships starting at \\$2.50/m!](#)

**Follow me
on Twitter!**

@ConvertingColor