

Converting Colors

YUV(155.7040, -21.0531,
32.7086)

Have a look what the booklet for
YUV(155.7040, -21.0531, 32.7086)
contains.

YUV(155.7040, -21.0531, 32.7086)	3
<i>Conversions</i>	4
<i>Details</i>	6
<i>Harmonies</i>	12
<i>Previews</i>	24
<i>Color Blindness Simulation</i>	28
<i>CSS Examples</i>	31

Color

**YUV(155.7040, -21.0531,
32.7086)**

Conversions

Conversions Part 1

Format	Color
Hex	C19171
RGB	193, 145, 113
RGB Percent	76%, 57%, 44%
CMY	0.2431, 0.4314, 0.5569
CMYK	0.00, 0.25, 0.41, 0.24
HSL	24°, 39%, 60%
HSV	24°, 41%, 76%
XYZ	35.0984, 32.7805, 20.1002
YIQ	155.7040, 38.8800, 0.2240

Conversions

Conversions Part 2

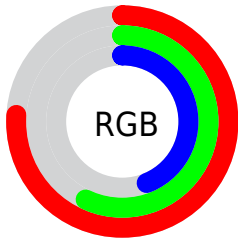
Format	Color
RYB	193, 166, 113
Decimal	12685681
CIELab	63.98, 13.96, 24.02
CIELCh	64, 27.786, 59.831
Yxy	32.7805, 0.3989, 0.3726
Android (android.graphics.Color)	4290875761 (0xFFC19171)
YUV	155.7040, -21.0531, 32.7086
Hunter-Lab	57.2543, 9.2302, 19.2631

Details

The YUV color **155.7040, -21.0531, 32.7086** is a light color, and the websafe version is hex **CC9966**. A complement of this color would be **150.2960, 21.0531, -32.7086**, and the grayscale version is **156.0000, 0.0000, 0.0000**.

A 20% lighter version of the original color is **210.6720, -22.5163, 35.3677**, and **103.8500, -19.1530, 29.9496** is the 20% darker color. If you saturate the color by 10%, you get **146.4940, -25.8795, 40.7858**, and if you desaturate by 10%, it is **164.9140, -16.2266, 24.6314**.

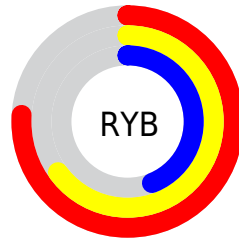
Distribution



Red (76%)

Green (57%)

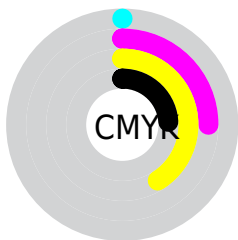
Blue (44%)



Red (76%)

Yellow (65%)

Blue (44%)

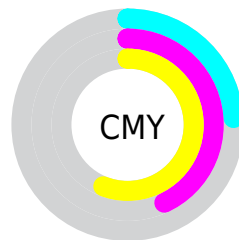


Cyan (0%)

Magenta (25%)

Yellow (41%)

Black (24%)



Cyan (24%)

Magenta (43%)

Yellow (56%)

Brightness & Saturation Gradients

These gradients show how the YUV color 155.7040, -21.0531, 32.7086 changes by changing the brightness by 10 percent. The first figure shows a shift by +10% for each color and the second figure -10%.

Similar to the brightness gradients but the following saturation gradients show a change of the YUV color 155.7040, -21.0531, 32.7086 by changing the saturation by 10% instead.

■ 155.7040,
-21.0531, 32.7086

■ 155.7040,
-21.0531, 32.7086

■ 255.0000, 0.0000,
0.0000

■ 129.2200,
-20.3215, 31.3791

■ 210.6720,
-22.5163, 35.3677

■ 103.8500,
-19.1530, 29.9496

■ 231.3820,
-19.4153, 20.7130

■ 79.6540, -18.5634,
27.4904

■ 251.0100,
-15.2879, 3.4992

■ 55.9850, -17.2476,
25.4462

■ 254.3160, -2.6208,
0.5999

■ 33.7890, -16.6580,
22.9870

■ 12.5250, -6.1748,
20.5876

■ 0.0000, 0.0000,

0.0000

■ 155.7040,
-21.0531, 32.7086

■ 155.7040,
-21.0531, 32.7086

■ 146.4940,
-25.8795, 40.7858

■ 164.9140,
-16.2266, 24.6314

■ 137.7570,
-31.4322, 48.4481

■ 173.6510,
-10.6739, 16.9691

■ 128.5470,
-36.2587, 56.5253

■ 182.8610, -5.8475,
8.8919

■ 119.9240,
-41.3745, 64.0877

■ 191.4840, -0.7316,
1.3295

■ 110.6000,
-46.6378, 72.2648

■ 200.6940, 4.0949,
-6.7476

■ 102.9060,
-50.7327, 79.0124

■ 209.4310, 9.6475,
-14.4100

■ 218.6410, 14.4740,
-22.4872

■ 226.4830, 14.0589,
-29.3646

■ 232.9400, 10.8756,
-35.0274

Harmonies

Analogous

The Analogous color harmony consists of three colors that are next to each other on the color wheel.



157.0500, -12.3497, 41.1751



155.7040, -21.0531, 32.7086



153.5080, -23.9144, 17.0945

Triad

The Triadic color harmony groups three colors that are evenly spaced from another and form a triangle on the color wheel.



155.7040, -21.0531, 32.7086



143.6690, 5.0932, -47.0677



157.2770, 20.0764, 0.6341

Complementary

The Complementary color scheme is a pair of colors which are on the opposite of each other on the color wheel.



155.7040, -21.0531, 32.7086



150.2960, 21.0531, -32.7086

Split Complementary

Split-complementary colors differ from the complementary color scheme. The scheme consists of three colors, the original color and two neighbors of the complement color.



152.1920, 25.5413, -25.6014



155.7040, -21.0531, 32.7086



141.7460, 18.3662, -57.6592

Square

The Square scheme is like the rectangle color scheme, but the four colors are evenly spaced on the color wheel.



155.7040, -21.0531, 32.7086



147.4300, -9.0860, -25.8101



145.3370, 25.4699, -49.4075



159.2000, 10.2544, 24.3806

Rectangle

The Rectangle color scheme consists of four colors that form a rectangle on the color wheel.



155.7040, -21.0531, 32.7086



152.2890, -21.8345, 3.2545



145.3370, 25.4699, -49.4075



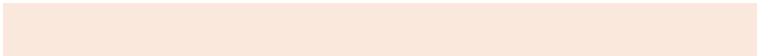
156.0910, 22.1401, -7.9728

Sweetspot

The Sweet Spot groups the original color and five complimentary colors.



155.7040, -21.0531, 32.7086



236.0140, -7.8949, 12.2657



142.3920, 9.1737, 44.3832



116.4910, -4.6791, 7.4624



252.0000, 0.0000, 0.0000



125.0000, 0.0000, 0.0000

Same Dimension

The Same Dimension uses a secret algorithm to generate beautiful new colors.



155.7040, -21.0531, 32.7086



191.7250, -32.8954, 51.1072



179.1840, -32.6287, 12.1166



92.3380, -2.6316, 4.0886



85.7070, -42.2536, 66.0320



17.4980, -8.6265, 13.5953

Inverse Universe

The Inverse Universe completely reimagines the original color for something new.



150.2960, 21.0531, -32.7086



183.2750, 32.8954, -51.1072



126.8160, 32.6287, -12.1166



91.6620, 2.6316, -4.0886



74.7060, 42.5429, -65.5172



15.5020, 8.6265, -13.5953

Previews

White Background



This preview shows how the YUV color 155.7040, -21.0531, 32.7086 looks on a white background.

Color Contrast Check

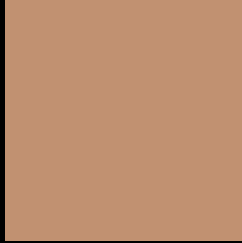
Large Text (above 18pt) WCAG AA × Fail

Any Text WCAG AA × Fail

Large Text (above 18pt) WCAG AAA × Fail

Any Text WCAG AAA × Fail

Black Background



This preview shows how the YUV color 155.7040, -21.0531, 32.7086 looks on a black background.

Color Contrast Check

Large Text (above 18pt) WCAG AA ✓ Pass

Any Text WCAG AA ✓ Pass

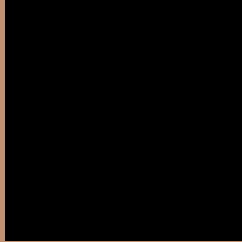
Large Text (above 18pt) WCAG AAA ✓ Pass

Any Text WCAG AAA ✓ Pass

If you want to check with other color combinations, try the [Color Contrast Checker](#).

YUV 155.7040, -21.0531, 32.7086

Background



This preview shows how black text looks on a background with the YUV color 155.7040, -21.0531, 32.7086.



This preview shows how white text looks on a background with the YUV color 155.7040, -21.0531,

Color Blindness Simulation

Color vision deficiency is a very complex topic, and I could not describe the different causes any better than Wikipedia does, so if you want to learn more, you should check out their [article about color blindness](#).

Dichromacy



Original Color

155.7040, -21.0531, 32.7086

Protanopia

153.9570, -18.2198, 10.5617

Deuteranopia

155.2470, -21.3208, 25.2164



Tritanopia

158.2970, -3.5974, 33.9425

Trichromacy



Original Color

155.7040, -21.0531, 32.7086

Protanomaly

154.4850, -18.9731, 18.8687

Deuteranomaly

155.5570, -21.4736, 27.5755

Tritanomaly

157.5760, -10.1440, 33.6978

Monochromacy



Original Color

155.7040, -21.0531, 32.7086

Achromatopsia

156.0000, 0.0000, 0.0000

Achromatomaly

155.7150, -7.7475, 11.6509

CSS Examples

Text

The CSS property to change the color of the text to YUV 155.7040, -21.0531, 32.7086 is called "color". The color property can be set on classes, ids or directly on the HTML element.

This example shows how text in the color `rgb(193, 145, 113)` looks like.

```
.text, #text, p{  
    color:rgb(193, 145, 113)  
}
```

If you want to add a text shadow in that color use the text-shadow property, you can generate a text shadow directly with our [CSS Text Shadow Generator](#).

Here you see how black text with a 4 pixel rgb(193, 145, 113) colored shadow looks like.

```
.shadow{ text-shadow: 4px 4px 2px rgb(193, 145, 113) }
```

Border

The CSS property to change the border of an element to YUV 155.7040, -21.0531, 32.7086 is called "border".

The border property can be set on classes, ids or directly on the HTML element.

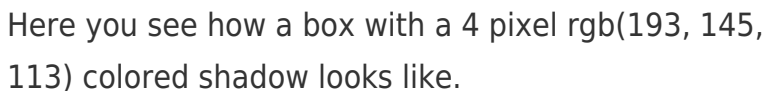
This example shows the color as border, it can be applied via the CSS property "border" or "border-color".

```
.border, #border, table{ border:4px solid rgb(193, 145, 113) }
```


If only the border color should be changed use the property `border-color`.

```
.border{ border-color:rgb(193, 145, 113) }
```

If you want to add a box shadow in that color use:



Here you see how a box with a 4 pixel `rgb(193, 145, 113)` colored shadow looks like.

```
.boxshadow{ -moz-box-shadow:4px 4px 4px 4px rgb(193, 145, 113); -webkit-box-shadow:4px 4px 4px 4px rgb(193, 145, 113); box-shadow:4px 4px 4px 4px rgb(193, 145, 113) }
```

Background

The CSS property to change the background color of an element to YUV 155.7040, -21.0531, 32.7086 is called "background". The background property can be set on classes, ids or directly on the HTML element.

```
.background, #background, body{  
background: rgb(193, 145, 113) }
```

If only the background color should be changed can be used:

```
.background{ background-color: rgb(193,  
145, 113) }
```

This example shows the color as background, it is applied via the CSS property "background".

To optimize and compress your CSS code, you can use our [online CSS compressor and optimizer](#) based on csstidy. If you want to create a linear or radial gradient as background or border, check our [CSS Gradient Generator](#).

Hey! You found this booklet interesting? Support Converting Colors with the new Membership Option!

The pro membership hides all ads, plus gives you double the colors in the color bucket, and more awesome pro features!

[Learn more, Memberships starting at \\$2.50/m!](#)

**Follow me
on Twitter!**

@ConvertingColor