

Converting Colors

YUV(156.0300, -22.1998,
27.1607)

Have a look what the booklet for
YUV(156.0300, -22.1998, 27.1607)
contains.

YUV(156.0300, -22.1998, 27.1607)	3
<i>Conversions</i>	4
<i>Details</i>	6
<i>Harmonies</i>	12
<i>Previews</i>	24
<i>Color Blindness Simulation</i>	28
<i>CSS Examples</i>	31

Color

**YUV(156.0300, -22.1998,
27.1607)**

Conversions

Conversions Part 1

Format	Color
Hex	BB956F
RGB	187, 149, 111
RGB Percent	73%, 58%, 44%
CMY	0.2667, 0.4157, 0.5647
CMYK	0.00, 0.20, 0.41, 0.27
HSL	30°, 36%, 58%
HSV	30°, 41%, 73%
XYZ	34.1102, 33.2074, 19.6508
YIQ	156.0300, 34.8460, -3.7620

Conversions

Conversions Part 2

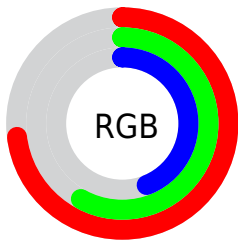
Format	Color
RYB	187, 187, 111
Decimal	12293487
CIELab	64.33, 9.08, 25.47
CIELCh	64, 27.042, 70.390
Yxy	33.2074, 0.3922, 0.3818
Android (android.graphics.Color)	4290483567 (0xFFBB956F)
YUV	156.0300, -22.1998, 27.1607
Hunter-Lab	57.6258, 4.8135, 20.1198

Details

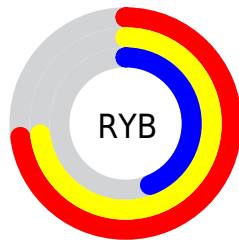
The YUV color **156.0300, -22.1998, 27.1607** is a dark color, and the websafe version is hex **CC9966**. A complement of this color would be **141.9700, 22.1998, -27.1607**, and the grayscale version is **156.0000, 0.0000, 0.0000**.

A 20% lighter version of the original color is **210.6990, -23.5156, 29.2050**, and **104.1760, -20.2998, 24.4016** is the 20% darker color. If you saturate the color by 10%, you get **148.5810, -27.8944, 33.6935**, and if you desaturate by 10%, it is **163.4790, -16.5051, 20.6279**.

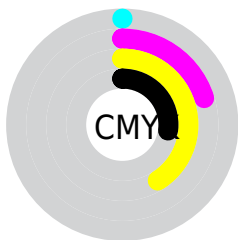
Distribution



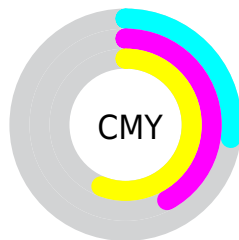
- Red (73%)
- Green (58%)
- Blue (44%)



- Red (73%)
- Yellow (73%)
- Blue (44%)



- Cyan (0%)
- Magenta (20%)
- Yellow (41%)
- Black (27%)



- Cyan (27%)
- Magenta (42%)
- Yellow (56%)

Brightness & Saturation Gradients

These gradients show how the YUV color 156.0300, -22.1998, 27.1607 changes by changing the brightness by 10 percent. The first figure shows a shift by +10% for each color and the second figure -10%.

Similar to the brightness gradients but the following saturation gradients show a change of the YUV color 156.0300, -22.1998, 27.1607 by changing the saturation by 10% instead.

■ 156.0300,
-22.1998, 27.1607

■ 156.0300,
-22.1998, 27.1607

■ 255.0000, 0.0000,
0.0000

■ 129.5460,
-21.4682, 25.8312

■ 210.6990,
-23.5156, 29.2050

■ 104.1760,
-20.2998, 24.4016

■ 233.5020,
-21.4465, 18.8537

■ 80.2790, -19.8575,
22.5573

■ 250.7820,
-16.1615, 3.6992

■ 56.6100, -18.5417,
20.5130

■ 254.0880, -3.4944,
0.7998

■ 34.9410, -17.2259,
18.4687

■ 14.2640, -7.0322,
15.5545

■ 0.0000, 0.0000,

0.0000

■ 156.0300,
-22.1998, 27.1607

■ 156.0300,
-22.1998, 27.1607

■ 148.5810,
-27.8944, 33.6935

■ 163.4790,
-16.5051, 20.6279

■ 140.6590,
-32.8629, 40.6411

■ 171.4010,
-11.5367, 13.6803

■ 133.2100,
-38.5575, 47.1738

■ 178.8500, -5.8421,
7.1475

■ 125.7610,
-44.2522, 53.7066

■ 186.2990, -0.1474,
0.6148

■ 117.8390,
-49.2206, 60.6542

■ 194.2210, 4.8210,
-6.3328

■ 111.0910,
-54.7679, 66.5722

■ 201.6700, 10.5157,
-12.8656

■ 209.1190, 16.2103,
-19.3984

■ 216.4710, 18.9948,
-25.8461

■ 221.7540, 16.3903,
-30.4793

Harmonies

Analogous

The Analogous color harmony consists of three colors that are next to each other on the color wheel.



157.8170, -15.6858, 37.8715



156.0300, -22.1998, 27.1607



153.8060, -22.5824, 9.8171

Triad

The Triadic color harmony groups three colors that are evenly spaced from another and form a triangle on the color wheel.



156.0300, -22.1998, 27.1607



143.9120, 9.9034, -49.9118



159.1210, 16.7023, 9.5409

Complementary

The Complementary color scheme is a pair of colors which are on the opposite of each other on the color wheel.



156.0300, -22.1998, 27.1607



141.9700, 22.1998, -27.1607

Split Complementary

Split-complementary colors differ from the complementary color scheme. The scheme consists of three colors, the original color and two neighbors of the complement color.



155.0900, 23.6196, -15.8649



156.0300, -22.1998, 27.1607



144.0390, 20.6868, -55.2852

Square

The Square scheme is like the rectangle color scheme, but the four colors are evenly spaced on the color wheel.



156.0300, -22.1998, 27.1607



147.3520, -4.1175, -32.7577



149.3920, 25.4427, -40.6858



159.9080, 6.4544, 29.8987

Rectangle

The Rectangle color scheme consists of four colors that form a rectangle on the color wheel.



156.0300, -22.1998, 27.1607



152.0430, -18.7552, -4.4227



149.3920, 25.4427, -40.6858



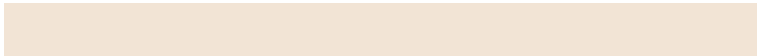
158.4620, 19.4922, 1.3488

Sweetspot

The Sweet Spot groups the original color and five complimentary colors.



156.0300, -22.1998, 27.1607



230.4760, -8.6157, 10.1065



138.0560, 5.3954, 42.9239



115.3660, -5.1104, 5.8180



250.0000, 0.0000, 0.0000



122.0000, 0.0000, 0.0000

Same Dimension

The Same Dimension uses a secret algorithm to generate beautiful new colors.



156.0300, -22.1998, 27.1607



193.9150, -34.4681, 42.1705



178.3360, -33.1966, 7.5983



90.6260, -2.7736, 2.9590



93.6150, -46.1522, 56.4656



18.0740, -8.9105, 11.3361

Inverse Universe

The Inverse Universe completely reimagines the original color for something new.



141.9700, 22.1998, -27.1607



172.0850, 34.4681, -42.1705



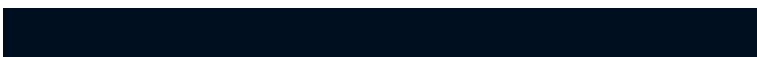
119.6640, 33.1966, -7.5983



88.9610, 2.4842, -3.4738



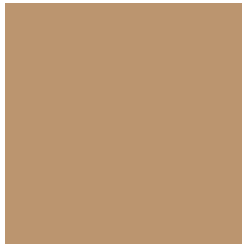
64.3850, 46.1522, -56.4656



12.3390, 9.1999, -10.8213

Previews

White Background



This preview shows how the YUV color 156.0300, -22.1998, 27.1607 looks on a white background.

Color Contrast Check

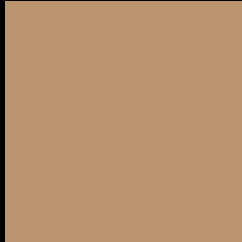
Large Text (above 18pt) WCAG AA × Fail

Any Text WCAG AA × Fail

Large Text (above 18pt) WCAG AAA × Fail

Any Text WCAG AAA × Fail

Black Background



This preview shows how the YUV color 156.0300, -22.1998, 27.1607 looks on a black background.

Color Contrast Check

Large Text (above 18pt) WCAG AA ✓ Pass

Any Text WCAG AA ✓ Pass

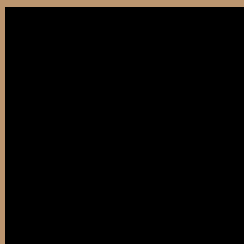
Large Text (above 18pt) WCAG AAA ✓ Pass

Any Text WCAG AAA ✓ Pass

If you want to check with other color combinations, try the [Color Contrast Checker](#).

YUV 156.0300, -22.1998, 27.1607

Background



This preview shows how black text looks on a background with the YUV color 156.0300, -22.1998, 27.1607.



This preview shows how white text looks on a background with the YUV color 156.0300, -22.1998, 27.1607.

Color Blindness Simulation

Color vision deficiency is a very complex topic, and I could not describe the different causes any better than Wikipedia does, so if you want to learn more, you should check out their [article about color blindness](#).

Dichromacy



Original Color

156.0300, -22.1998, 27.1607

Protanopia

154.8000, -20.1144, 11.5764

Deuteranopia

156.3180, -22.3418, 26.0311



Tritanopia

158.6060, -2.2708, 28.4095

Trichromacy



Original Color

156.0300, -22.1998, 27.1607

Protanomaly

155.0180, -20.7149, 17.5242

Deuteranomaly

156.3180, -22.3418, 26.0311

Tritanomaly

157.6570, -9.6909, 28.3648

Monochromacy



Original Color

156.0300, -22.1998, 27.1607

Achromatopsia

156.0000, 0.0000, 0.0000

Achromatomaly

155.7040, -7.7421, 9.9066

CSS Examples

Text

The CSS property to change the color of the text to YUV 156.0300, -22.1998, 27.1607 is called "color". The color property can be set on classes, ids or directly on the HTML element.

This example shows how text in the color `rgb(187, 149, 111)` looks like.

```
.text, #text, p{  
    color:rgb(187, 149, 111)  
}
```

If you want to add a text shadow in that color use the text-shadow property, you can generate a text shadow directly with our [CSS Text Shadow Generator](#).

Here you see how black text with a 4 pixel rgb(187, 149, 111) colored shadow looks like.

```
.shadow{ text-shadow: 4px 4px 2px rgb(187, 149, 111) }
```

Border

The CSS property to change the border of an element to YUV 156.0300, -22.1998, 27.1607 is called "border".

The border property can be set on classes, ids or directly on the HTML element.

This example shows the color as border, it can be applied via the CSS property "border" or "border-color".

```
.border, #border, table{ border:4px solid rgb(187, 149, 111) }
```


If only the border color should be changed use the property `border-color`.

```
.border{ border-color:rgb(187, 149, 111) }
```

If you want to add a box shadow in that color use:

Here you see how a box with a 4 pixel `rgb(187, 149, 111)` colored shadow looks like.

```
.boxshadow{ -moz-box-shadow:4px 4px 4px  
4px rgb(187, 149, 111); -webkit-box-  
shadow:4px 4px 4px 4px rgb(187, 149, 111);  
box-shadow:4px 4px 4px 4px rgb(187, 149,  
111) }
```

Background

The CSS property to change the background color of an element to YUV 156.0300, -22.1998, 27.1607 is called "background". The background property can be set on classes, ids or directly on the HTML element.

```
.background, #background, body{  
background: rgb(187, 149, 111) }
```

If only the background color should be changed can be used:

```
.background{ background-color: rgb(187,  
149, 111) }
```

This example shows the color as background, it is applied via the CSS property "background".

To optimize and compress your CSS code, you can use our [online CSS compressor and optimizer](#) based on csstidy. If you want to create a linear or radial gradient as background or border, check our [CSS Gradient Generator](#).

Hey! You found this booklet interesting? Support Converting Colors with the new Membership Option!

The pro membership hides all ads, plus gives you double the colors in the color bucket, and more awesome pro features!

[Learn more, Memberships starting at \\$2.50/m!](#)

**Follow me
on Twitter!**

@ConvertingColor