

Converting Colors

YUV(156.1690, -16.3523,
18.2688)

Have a look what the booklet for
YUV(156.1690, -16.3523, 18.2688)
contains.

YUV(156.1690, -16.3523, 18.2688)	3
<i>Conversions</i>	4
<i>Details</i>	6
<i>Harmonies</i>	12
<i>Previews</i>	24
<i>Color Blindness Simulation</i>	28
<i>CSS Examples</i>	31

Color

**YUV(156.1690, -16.3523,
18.2688)**

Conversions

Conversions Part 1

Format	Color
Hex	B1987B
RGB	177, 152, 123
RGB Percent	69%, 60%, 48%
CMY	0.3059, 0.4039, 0.5176
CMYK	0.00, 0.14, 0.31, 0.31
HSL	32°, 26%, 59%
HSV	32°, 31%, 69%
XYZ	32.9348, 33.2336, 23.4178
YIQ	156.1690, 24.2090, -3.7190

Conversions

Conversions Part 2

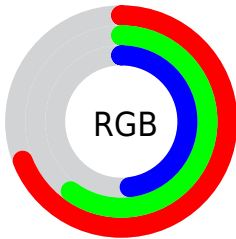
Format	Color
RYB	170, 177, 123
Decimal	11638907
CIELab	64.35, 4.86, 18.71
CIElCh	64, 19.326, 75.449
Yxy	33.2336, 0.3676, 0.3710
Android (android.graphics.Color)	4289828987 (0xFFB1987B)
YUV	156.1690, -16.3523, 18.2688
Hunter-Lab	57.6486, 1.0925, 16.2695

Details

The YUV color $156.1690, -16.3523, 18.2688$ is a light color, and the websafe version is hex 999966 . A complement of this color would be $143.8310, 16.3523, -18.2688$, and the grayscale version is $156.0000, 0.0000, 0.0000$.

A 20% lighter version of the original color is $210.6530, -17.0839, 19.5983$, and $104.7990, -15.1839, 16.8393$ is the 20% darker color. If you saturate the color by 10%, you get $149.4210, -21.8996, 24.1868$, and if you desaturate by 10%, it is $162.9170, -10.8051, 12.3508$.

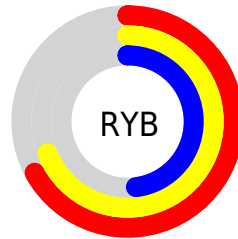
Distribution



Red (69%)

Green (60%)

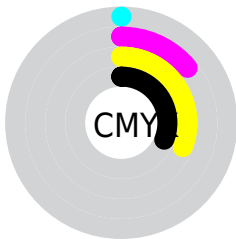
Blue (48%)



Red (67%)

Yellow (69%)

Blue (48%)

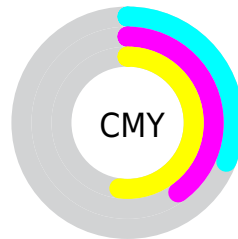


Cyan (0%)

Magenta (14%)

Yellow (31%)

Black (31%)



Cyan (31%)

Magenta (40%)

Yellow (52%)

Brightness & Saturation Gradients

These gradients show how the YUV color 156.1690, -16.3523, 18.2688 changes by changing the brightness by 10 percent. The first figure shows a shift by +10% for each color and the second figure -10%.

Similar to the brightness gradients but the following saturation gradients show a change of the YUV color 156.1690, -16.3523, 18.2688 by changing the saturation by 10% instead.

■ 156.1690,
-16.3523, 18.2688

■ 156.1690,
-16.3523, 18.2688

■ 255.0000, 0.0000,
0.0000

■ 129.9840,
-15.7681, 17.5540

■ 210.6530,
-17.0839, 19.5983

■ 104.7990,
-15.1839, 16.8393

■ 236.7450,
-16.6363, 16.0096

■ 80.3150, -14.4523,
15.5097

■ 252.2640,
-10.4832, 2.3995

■ 57.5320, -13.5733,
13.5654

■ 35.0050, -14.2995,
13.1506

■ 14.5300, -7.1633,
10.9362

■ 0.0000, 0.0000,

0.0000

■ 156.1690,
-16.3523, 18.2688

■ 156.1690,
-16.3523, 18.2688

■ 149.4210,
-21.8996, 24.1868

■ 162.9170,
-10.8051, 12.3508

■ 142.7870,
-27.0100, 30.0048

■ 169.5510, -5.6946,
6.5328

■ 135.4520,
-32.2678, 36.4376

■ 176.8860, -0.4368,
0.1000

■ 128.7040,
-37.8151, 42.3556

■ 183.6340, 5.1104,
-5.8180

■ 122.0700,
-42.9255, 48.1736

■ 190.2680, 10.2209,
-11.6360

■ 115.3220,
-48.4727, 54.0916

■ 197.0160, 15.7681,
-17.5540

■ 108.6880,
-53.5832, 59.9096

■ 203.7640, 21.3153,
-23.4720

■ 209.9590, 22.2052,
-28.9050

■ 214.6550, 19.8901,
-33.0234

Harmonies

Analogous

The Analogous color harmony consists of three colors that are next to each other on the color wheel.



157.8480, -12.7431, 27.3203



156.1690, -16.3523, 18.2688



154.6080, -15.5827, 4.7288

Triad

The Triadic color harmony groups three colors that are evenly spaced from another and form a triangle on the color wheel.



156.1690, -16.3523, 18.2688



149.1420, 7.8180, -34.3275



158.8130, 10.4452, 9.8110

Complementary

The Complementary color scheme is a pair of colors which are on the opposite of each other on the color wheel.



156.1690, -16.3523, 18.2688



143.8310, 16.3523, -18.2688

Split Complementary

Split-complementary colors differ from the complementary color scheme. The scheme consists of three colors, the original color and two neighbors of the complement color.



156.1960, 16.1724, -7.1879



156.1690, -16.3523, 18.2688



149.6780, 14.9487, -34.7976

Square

The Square scheme is like the rectangle color scheme, but the four colors are evenly spaced on the color wheel.



156.1690, -16.3523, 18.2688



150.0910, -1.5239, -24.6358



152.8410, 17.8264, -24.4166



159.2400, 2.8397, 22.5915

Rectangle

The Rectangle color scheme consists of four colors that form a rectangle on the color wheel.



156.1690, -16.3523, 18.2688



153.0520, -12.3506, -5.3076



152.8410, 17.8264, -24.4166



158.3500, 12.6455, 4.0781

Sweetspot

The Sweet Spot groups the original color and five complimentary colors.



156.1690, -16.3523, 18.2688



221.7360, -6.2788, 7.2475



141.9960, 2.9600, 30.6985



109.9960, -3.9420, 4.3885



242.0000, 0.0000, 0.0000



115.0000, 0.0000, 0.0000

Same Dimension

The Same Dimension uses a secret algorithm to generate beautiful new colors.



156.1690, -16.3523, 18.2688



196.8300, -25.5522, 29.0901



170.2460, -23.2923, 4.1693



85.6260, -2.7736, 2.9590



93.8810, -46.2833, 51.8474



15.9920, -7.8841, 8.7770

Inverse Universe

The Inverse Universe completely reimagines the original color for something new.



143.8310, 16.3523, -18.2688



177.5830, 25.8416, -28.5753



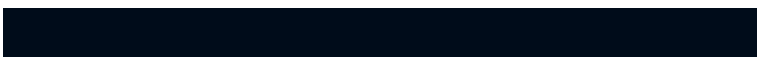
129.7540, 23.2923, -4.1693



83.3740, 2.7736, -2.9590



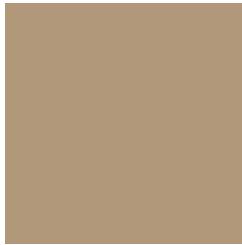
59.1190, 46.2833, -51.8474



10.0080, 7.8841, -8.7770

Previews

White Background



This preview shows how the YUV color 156.1690, -16.3523, 18.2688 looks on a white background.

Color Contrast Check

Large Text (above 18pt) WCAG AA × Fail

Any Text WCAG AA × Fail

Large Text (above 18pt) WCAG AAA × Fail

Any Text WCAG AAA × Fail

Black Background



This preview shows how the YUV color 156.1690, -16.3523, 18.2688 looks on a black background.

Color Contrast Check

Large Text (above 18pt) WCAG AA ✓ Pass

Any Text WCAG AA ✓ Pass

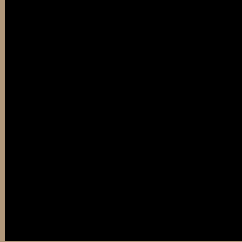
Large Text (above 18pt) WCAG AAA ✓ Pass

Any Text WCAG AAA ✓ Pass

If you want to check with other color combinations, try the [Color Contrast Checker](#).

YUV 156.1690, -16.3523, 18.2688

Background



This preview shows how black text looks on a background with the YUV color 156.1690, -16.3523, 18.2688.



This preview shows how white text looks on a background with the YUV color 156.1690, -16.3523, 18.2688.

Color Blindness Simulation

Color vision deficiency is a very complex topic, and I could not describe the different causes any better than Wikipedia does, so if you want to learn more, you should check out their [article about color blindness](#).

Dichromacy



Original Color

156.1690, -16.3523, 18.2688

Protanopia

155.4560, -15.0148, 9.2471

Deuteranopia

156.4900, -16.5106, 22.3723



Tritanopia

158.5340, 0.2297, 19.7027

Trichromacy



Original Color

156.1690, -16.3523, 18.2688

Protanomaly

155.9510, -15.7518, 12.3210

Deuteranomaly

156.4790, -16.5051, 20.6279

Tritanomaly

157.9270, -5.8800, 19.3580

Monochromacy



Original Color

156.1690, -16.3523, 18.2688

Achromatopsia

156.0000, 0.0000, 0.0000

Achromatomaly

156.4370, -6.1314, 6.6328

CSS Examples

Text

The CSS property to change the color of the text to YUV 156.1690, -16.3523, 18.2688 is called "color". The color property can be set on classes, ids or directly on the HTML element.

This example shows how text in the color `rgb(177, 152, 123)` looks like.

```
.text, #text, p{  
    color:rgb(177, 152, 123)  
}
```

If you want to add a text shadow in that color use the text-shadow property, you can generate a text shadow directly with our [CSS Text Shadow Generator](#).

Here you see how black text with a 4 pixel rgb(177, 152, 123) colored shadow looks like.

```
.shadow{ text-shadow: 4px 4px 2px rgb(177, 152, 123) }
```

Border

The CSS property to change the border of an element to YUV 156.1690, -16.3523, 18.2688 is called "border".

The border property can be set on classes, ids or directly on the HTML element.

This example shows the color as border, it can be applied via the CSS property "border" or "border-color".

```
.border, #border, table{ border:4px solid rgb(177, 152, 123) }
```


If only the border color should be changed use the property `border-color`.

```
.border{ border-color:rgb(177, 152, 123) }
```

If you want to add a box shadow in that color use:

Here you see how a box with a 4 pixel `rgb(177, 152, 123)` colored shadow looks like.

```
.boxshadow{ -moz-box-shadow:4px 4px 4px 4px rgb(177, 152, 123); -webkit-box-shadow:4px 4px 4px 4px rgb(177, 152, 123); box-shadow:4px 4px 4px 4px rgb(177, 152, 123) }
```

Background

The CSS property to change the background color of an element to YUV 156.1690, -16.3523, 18.2688 is called "background". The background property can be set on classes, ids or directly on the HTML element.

```
.background, #background, body{  
background: rgb(177, 152, 123) }
```

If only the background color should be changed can be used:

```
.background{ background-color: rgb(177,  
152, 123) }
```

This example shows the color as background, it is applied via the CSS property "background".

To optimize and compress your CSS code, you can use our [online CSS compressor and optimizer](#) based on csstidy. If you want to create a linear or radial gradient as background or border, check our [CSS Gradient Generator](#).

Hey! You found this booklet interesting? Support Converting Colors with the new Membership Option!

The pro membership hides all ads, plus gives you double the colors in the color bucket, and more awesome pro features!

[Learn more, Memberships starting at \\$2.50/m!](#)

**Follow me
on Twitter!**

@ConvertingColor