

Converting Colors

YUV(156.3160, -12.4808,
36.5569)

Have a look what the booklet for
YUV(156.3160, -12.4808, 36.5569)
contains.

YUV(156.3160, -12.4808, 36.5569)	3
<i>Conversions</i>	4
<i>Details</i>	6
<i>Harmonies</i>	12
<i>Previews</i>	24
<i>Color Blindness Simulation</i>	28
<i>CSS Examples</i>	31

Color

**YUV(156.3160, -12.4808,
36.5569)**

Conversions

Conversions Part 1

Format	Color
Hex	C68C83
RGB	198, 140, 131
RGB Percent	78%, 55%, 51%
CMY	0.2235, 0.4510, 0.4863
CMYK	0.00, 0.29, 0.34, 0.22
HSL	8°, 37%, 65%
HSV	8°, 34%, 78%
XYZ	36.7635, 32.4006, 25.7890
YIQ	156.3160, 37.4570, 9.4970

Conversions

Conversions Part 2

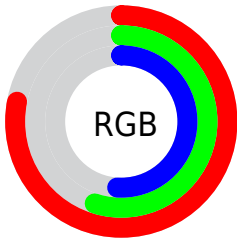
Format	Color
R _Y B	198, 141, 131
Decimal	13012099
CIE Lab	63.67, 20.89, 13.62
CIE LCh	64, 24.937, 33.114
Yxy	32.4006, 0.3872, 0.3412
Android (android.graphics.Color)	4291202179 (0xFFC68C83)
YUV	156.3160, -12.4808, 36.5569
Hunter-Lab	56.9215, 15.6738, 12.9830

Details

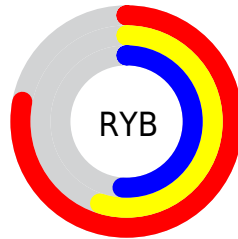
The YUV color $156.3160, -12.4808, 36.5569$ is a light color, and the websafe version is hex $CC9999$. A complement of this color would be $172.6840, 12.4808, -36.5569$, and the grayscale version is $156.0000, 0.0000, 0.0000$.

A 20% lighter version of the original color is $211.0990, -13.3598, 38.5012$, and $104.0490, -10.8702, 33.2830$ is the 20% darker color. If you saturate the color by 10%, you get $144.0570, -16.2971, 47.3080$, and if you desaturate by 10%, it is $168.5750, -8.6645, 25.8057$.

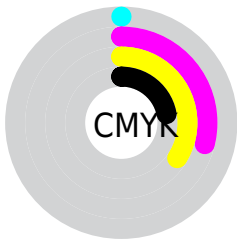
Distribution



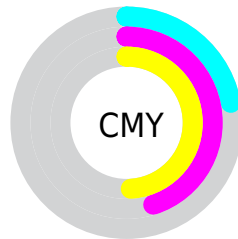
- Red (78%)
- Green (55%)
- Blue (51%)



- Red (78%)
- Yellow (55%)
- Blue (51%)



- Cyan (0%)
- Magenta (29%)
- Yellow (34%)
- Black (22%)



- Cyan (22%)
- Magenta (45%)
- Yellow (49%)

Brightness & Saturation Gradients

These gradients show how the YUV color 156.3160, -12.4808, 36.5569 changes by changing the brightness by 10 percent. The first figure shows a shift by +10% for each color and the second figure -10%.

Similar to the brightness gradients but the following saturation gradients show a change of the YUV color 156.3160, -12.4808, 36.5569 by changing the saturation by 10% instead.

■ 156.3160,
-12.4808, 36.5569

■ 156.3160,
-12.4808, 36.5569

255.0000, 0.0000,
0.0000

■ 129.8320,
-11.7492, 35.2273

■ 211.0990,
-13.3598, 38.5012

■ 104.0490,
-10.8702, 33.2830

■ 230.7270, -9.2324,
21.2874

■ 80.1520, -10.4279,
31.4387

■ 250.9420, -5.3944,
3.5589

■ 56.3690, -9.5489,
29.4944

■ 33.2870, -8.5225,
26.9353

■ 12.5580, -6.1911,
25.8206

■ 0.0000, 0.0000,

0.0000

■ 156.3160,
-12.4808, 36.5569

■ 156.3160,
-12.4808, 36.5569

■ 144.0570,
-16.2971, 47.3080

■ 168.5750, -8.6645,
25.8057

■ 131.7980,
-20.1134, 58.0592

■ 180.8340, -4.8482,
15.0546

■ 119.6530,
-23.4929, 68.7103

■ 192.9790, -1.4686,
4.4034

■ 106.8070,
-27.0199, 79.9763

■ 205.8250, 2.0583,
-6.8625

■ 94.5480, -30.8362,
90.7274

■ 218.0840, 5.8746,
-17.6137

■ 82.2890, -34.6525,
101.4785

■ 230.3430, 9.6909,
-28.3648

■ 75.0510, -37.0001,
107.8263

■ 237.9570, 8.4022,
-35.0423

Harmonies

Analogous

The Analogous color harmony consists of three colors that are next to each other on the color wheel.



157.6500, -2.2925, 35.3869



156.3160, -12.4808, 36.5569



154.7250, -19.5844, 28.3052

Triad

The Triadic color harmony groups three colors that are evenly spaced from another and form a triangle on the color wheel.



156.3160, -12.4808, 36.5569



147.2990, -7.0494, -25.6952



152.4270, 22.4675, -19.6685

Complementary

The Complementary color scheme is a pair of colors which are on the opposite of each other on the color wheel.



156.3160, -12.4808, 36.5569



172.6840, 12.4808, -36.5569

Split Complementary

Split-complementary colors differ from the complementary color scheme. The scheme consists of three colors, the original color and two neighbors of the complement color.



147.2950, 22.5326, -40.6007



156.3160, -12.4808, 36.5569



144.5170, 5.6611, -42.5494

Square

The Square scheme is like the rectangle color scheme, but the four colors are evenly spaced on the color wheel.



156.3160, -12.4808, 36.5569



150.3140, -16.4238, -5.5374



143.7470, 16.8867, -49.7671



156.7890, 16.8660, 3.6930

Rectangle

The Rectangle color scheme consists of four colors that form a rectangle on the color wheel.



156.3160, -12.4808, 36.5569



153.5020, -21.4465, 18.8537



143.7470, 16.8867, -49.7671



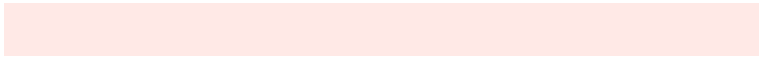
150.8990, 23.2208, -27.9754

Sweetspot

The Sweet Spot groups the original color and five complimentary colors.



156.3160, -12.4808, 36.5569



239.2360, -4.5533, 13.8250



157.6450, 15.4580, 35.3913



117.9580, -2.9373, 8.8068



0.0000, 0.0000, 0.0000



128.0000, 0.0000, 0.0000

Same Dimension

The Same Dimension uses a secret algorithm to generate beautiful new colors.



156.3160, -12.4808, 36.5569



189.6130, -19.5292, 57.3444



175.6870, -22.0307, 19.5685



93.2780, -1.6161, 5.0182



61.6510, -30.3939, 88.8831



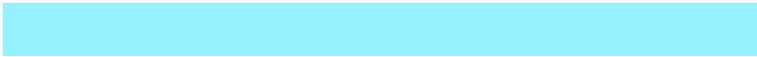
13.6990, -6.7536, 19.5580

Inverse Universe

The Inverse Universe completely reimagines the original color for something new.



172.6840, 12.4808, -36.5569



215.3870, 19.5292, -57.3444



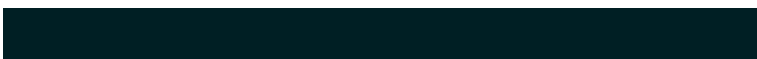
153.3130, 22.0307, -19.5685



95.7220, 1.6161, -5.0182



101.3490, 30.3939, -88.8831



22.3010, 6.7536, -19.5580

Previews

White Background



This preview shows how the YUV color 156.3160, -12.4808, 36.5569 looks on a white background.

Color Contrast Check

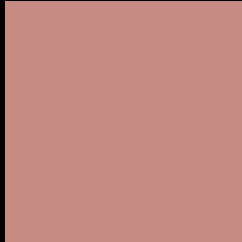
Large Text (above 18pt) WCAG AA × Fail

Any Text WCAG AA × Fail

Large Text (above 18pt) WCAG AAA × Fail

Any Text WCAG AAA × Fail

Black Background



This preview shows how the YUV color 156.3160, -12.4808, 36.5569 looks on a black background.

Color Contrast Check

Large Text (above 18pt) WCAG AA ✓ Pass

Any Text WCAG AA ✓ Pass

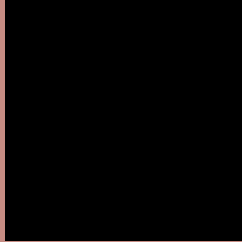
Large Text (above 18pt) WCAG AAA ✓ Pass

Any Text WCAG AAA ✓ Pass

If you want to check with other color combinations, try the [Color Contrast Checker](#).

YUV 156.3160, -12.4808, 36.5569

Background



This preview shows how black text looks on a background with the YUV color 156.3160, -12.4808, 36.5569.



This preview shows how white text looks on a background with the YUV color 156.3160, -12.4808, 36.5569.

Color Blindness Simulation

Color vision deficiency is a very complex topic, and I could not describe the different causes any better than Wikipedia does, so if you want to learn more, you should check out their [article about color blindness](#).

Dichromacy



Original Color

156.3160, -12.4808, 36.5569

Protanopia

154.2690, -8.0206, 5.9031

Deuteranopia

155.3910, -13.0108, 19.8281



Tritanopia

157.0910, -4.4819, 37.6312

Trichromacy



Original Color

156.3160, -12.4808, 36.5569

Protanomaly

154.8790, -9.8003, 16.7691

Deuteranomaly

155.8370, -12.7376, 25.5760

Tritanomaly

156.6950, -7.2446, 37.1015

Monochromacy



Original Color

156.3160, -12.4808, 36.5569

Achromatopsia

156.0000, 0.0000, 0.0000

Achromatomaly

155.9370, -4.4059, 13.2103

CSS Examples

Text

The CSS property to change the color of the text to YUV 156.3160, -12.4808, 36.5569 is called "color". The color property can be set on classes, ids or directly on the HTML element.

This example shows how text in the color `rgb(198, 140, 131)` looks like.

```
.text, #text, p{  
    color:rgb(198, 140, 131)  
}
```

If you want to add a text shadow in that color use the text-shadow property, you can generate a text shadow directly with our [CSS Text Shadow Generator](#).

Here you see how black text with a 4 pixel rgb(198, 140, 131) colored shadow looks like.

```
.shadow{ text-shadow: 4px 4px 2px rgb(198, 140, 131) }
```

Border

The CSS property to change the border of an element to YUV 156.3160, -12.4808, 36.5569 is called "border".

The border property can be set on classes, ids or directly on the HTML element.

This example shows the color as border, it can be applied via the CSS property "border" or "border-color".

```
.border, #border, table{ border:4px solid rgb(198, 140, 131) }
```


If only the border color should be changed use the property `border-color`.

```
.border{ border-color:rgb(198, 140, 131) }
```

If you want to add a box shadow in that color use:

Here you see how a box with a 4 pixel `rgb(198, 140, 131)` colored shadow looks like.

```
.boxshadow{ -moz-box-shadow:4px 4px 4px  
4px rgb(198, 140, 131); -webkit-box-  
shadow:4px 4px 4px 4px rgb(198, 140, 131);  
box-shadow:4px 4px 4px 4px rgb(198, 140,  
131) }
```

Background

The CSS property to change the background color of an element to YUV 156.3160, -12.4808, 36.5569 is called "background". The background property can be set on classes, ids or directly on the HTML element.

```
.background, #background, body{  
background: rgb(198, 140, 131) }
```

If only the background color should be changed can be used:

```
.background{ background-color: rgb(198,  
140, 131) }
```

This example shows the color as background, it is applied via the CSS property "background".

To optimize and compress your CSS code, you can use our [online CSS compressor and optimizer](#) based on csstidy. If you want to create a linear or radial gradient as background or border, check our [CSS Gradient Generator](#).

Hey! You found this booklet interesting? Support Converting Colors with the new Membership Option!

The pro membership hides all ads, plus gives you double the colors in the color bucket, and more awesome pro features!

[Learn more, Memberships starting at \\$2.50/m!](#)

**Follow me
on Twitter!**

@ConvertingColor