

Converting Colors

YUV(156.4890, -11.5801,
27.6351)

Have a look what the booklet for
YUV(156.4890, -11.5801, 27.6351)
contains.

YUV(156.4890, -11.5801, 27.6351)	3
<i>Conversions</i>	4
<i>Details</i>	6
<i>Harmonies</i>	12
<i>Previews</i>	24
<i>Color Blindness Simulation</i>	28
<i>CSS Examples</i>	31

Color

**YUV(156.4890, -11.5801,
27.6351)**

Conversions

Conversions Part 1

Format	Color
Hex	BC9185
RGB	188, 145, 133
RGB Percent	74%, 57%, 52%
CMY	0.2627, 0.4314, 0.4784
CMYK	0.00, 0.23, 0.29, 0.26
HSL	13°, 29%, 63%
HSV	13°, 29%, 74%
XYZ	35.0981, 32.6356, 26.6397
YIQ	156.4890, 29.4800, 5.3840

Conversions

Conversions Part 2

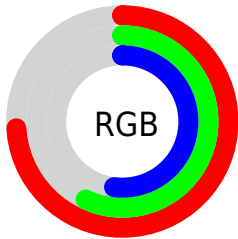
Format	Color
R _Y B	188, 148, 133
Decimal	12358021
CIE Lab	63.86, 14.47, 12.61
CIE LCh	64, 19.194, 41.064
Yxy	32.6356, 0.3719, 0.3458
Android (android.graphics.Color)	4290548101 (0xFFBC9185)
YUV	156.4890, -11.5801, 27.6351
Hunter-Lab	57.1276, 9.6936, 12.3412

Details

The YUV color $156.4890, -11.5801, 27.6351$ is a light color, and the websafe version is hex $CC9999$. A complement of this color would be $164.5110, 11.5801, -27.6351$, and the grayscale version is $157.0000, 0.0000, 0.0000$.

A 20% lighter version of the original color is $211.2720, -12.4591, 29.5795$, and $104.7060, -10.7011, 25.6908$ is the 20% darker color. If you saturate the color by 10%, you get $145.5180, -15.5384, 37.2567$, and if you desaturate by 10%, it is $167.4600, -7.6218, 18.0136$.

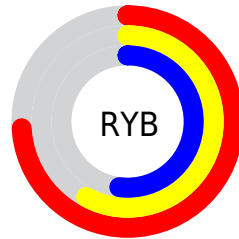
Distribution



Red (74%)

Green (57%)

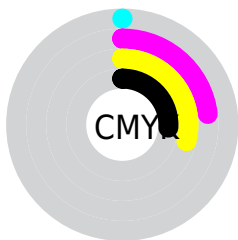
Blue (52%)



Red (74%)

Yellow (58%)

Blue (52%)

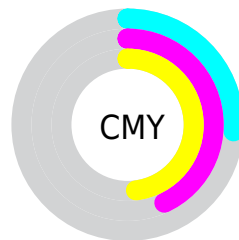


Cyan (0%)

Magenta (23%)

Yellow (29%)

Black (26%)



Cyan (26%)


Magenta (43%)


Yellow (48%)

Brightness & Saturation Gradients

These gradients show how the YUV color 156.4890, -11.5801, 27.6351 changes by changing the brightness by 10 percent. The first figure shows a shift by +10% for each color and the second figure -10%.


Similar to the brightness gradients but the following saturation gradients show a change of the YUV color 156.4890, -11.5801, 27.6351 by changing the saturation by 10% instead.


 156.4890,
-11.5801, 27.6351

 156.4890,
-11.5801, 27.6351


255.0000, 0.0000,
0.0000


 130.0050,
-10.8485, 26.3056


 211.2720,
-12.4591, 29.5795


 104.7060,
-10.7011, 25.6908


 233.8900, -9.8058,
18.5135

 80.8090, -10.2588,
23.8465

 253.5180, -5.6784,
1.2997

 57.1400, -8.9430,
21.8022

 35.2430, -8.5008,
19.9579

 11.9380, -5.8854,
21.1024

 0.0000, 0.0000,

0.0000

■ 156.4890,
-11.5801, 27.6351

■ 156.4890,
-11.5801, 27.6351

■ 145.5180,
-15.5384, 37.2567

■ 167.4600, -7.6218,
18.0136

■ 135.1340,
-19.7861, 46.3635

■ 177.8440, -3.3741,
8.9068

■ 124.2770,
-23.3076, 55.8851

■ 188.7010, 0.1474,
-0.6148

■ 113.3060,
-27.2659, 65.5066

■ 199.6720, 4.1057,
-10.2363

■ 102.9220,
-31.5135, 74.6134

■ 210.0560, 8.3534,
-19.3431

■ 91.9510, -35.4718,
84.2350

■ 221.0270, 12.3117,
-28.9647

■ 80.9800, -39.4301,
93.8565

■ 230.8580, 11.9020,
-37.5865

■ 80.2790, -39.5775,
94.4713

■ 234.9670, 9.8763,
-41.1901

Harmonies

Analogous

The Analogous color harmony consists of three colors that are next to each other on the color wheel.



157.7370, -4.3073, 28.2947



156.4890, -11.5801, 27.6351



155.2940, -15.9209, 19.9132

Triad

The Triadic color harmony groups three colors that are evenly spaced from another and form a triangle on the color wheel.



156.4890, -11.5801, 27.6351



149.3470, -3.1291, -23.1063



154.5870, 16.4726, -10.1618

Complementary

The Complementary color scheme is a pair of colors which are on the opposite of each other on the color wheel.



156.4890, -11.5801, 27.6351



164.5110, 11.5801, -27.6351

Split Complementary

Split-complementary colors differ from the complementary color scheme. The scheme consists of three colors, the original color and two neighbors of the complement color.



151.1290, 17.6844, -25.5461



156.4890, -11.5801, 27.6351



148.0990, 6.3602, -33.4128

Square

The Square scheme is like the rectangle color scheme, but the four colors are evenly spaced on the color wheel.



156.4890, -11.5801, 27.6351



151.6710, -11.1768, -8.4815



148.4500, 14.0752, -34.5976



157.1440, 11.7610, 7.7667

Rectangle

The Rectangle color scheme consists of four colors that form a rectangle on the color wheel.



156.4890, -11.5801, 27.6351



154.1250, -16.3306, 11.2914



148.4500, 14.0752, -34.5976



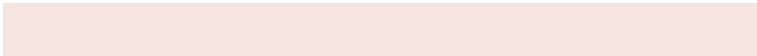
153.7820, 17.3625, -15.5948

Sweetspot

The Sweet Spot groups the original color and five complimentary colors.



156.4890, -11.5801, 27.6351



232.5130, -4.6899, 10.9511



154.3470, 10.6749, 29.5137



114.6480, -2.7845, 6.4477



250.0000, 0.0000, 0.0000



122.0000, 0.0000, 0.0000

Same Dimension

The Same Dimension uses a secret algorithm to generate beautiful new colors.



156.4890, -11.5801, 27.6351



195.8670, -18.1754, 43.0896



172.3380, -19.3936, 13.7356



88.8650, -1.9054, 4.5034



67.2000, -33.1296, 79.6316



13.3780, -6.5954, 15.4545

Inverse Universe

The Inverse Universe completely reimagines the original color for something new.



164.5110, 11.5801, -27.6351



208.1330, 18.1754, -43.0896



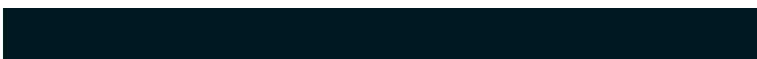
148.6620, 19.3936, -13.7356



90.1350, 1.9054, -4.5034



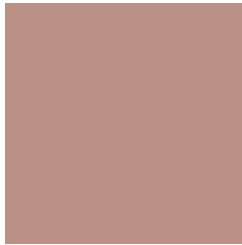
90.8000, 33.1296, -79.6316



17.6220, 6.5954, -15.4545

Previews

White Background



This preview shows how the YUV color 156.4890, -11.5801, 27.6351 looks on a white background.

Color Contrast Check

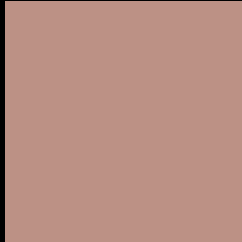
Large Text (above 18pt) WCAG AA × Fail

Any Text WCAG AA × Fail

Large Text (above 18pt) WCAG AAA × Fail

Any Text WCAG AAA × Fail

Black Background



This preview shows how the YUV color 156.4890, -11.5801, 27.6351 looks on a black background.

Color Contrast Check

Large Text (above 18pt) WCAG AA ✓ Pass

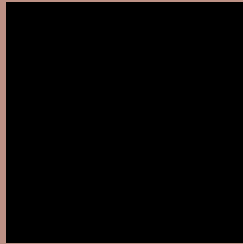
Any Text WCAG AA ✓ Pass

Large Text (above 18pt) WCAG AAA ✓ Pass

Any Text WCAG AAA ✓ Pass

If you want to check with other color combinations, try the [Color Contrast Checker](#).

YUV 156.4890, -11.5801, 27.6351 Background



This preview shows how black text looks on a background with the YUV color 156.4890, -11.5801, 27.6351.



This preview shows how white text looks on a background with the YUV color 156.4890, -11.5801,

Color Blindness Simulation

Color vision deficiency is a very complex topic, and I could not describe the different causes any better than Wikipedia does, so if you want to learn more, you should check out their [article about color blindness](#).

Dichromacy



Original Color

156.4890, -11.5801, 27.6351

Protanopia

155.1550, -8.4574, 6.0031

Deuteranopia

155.7330, -11.7004, 19.5282



Tritanopia

157.6060, -2.2708, 28.4095

Trichromacy



Original Color

156.4890, -11.5801, 27.6351

Protanomaly

155.2700, -9.5001, 13.7952

Deuteranomaly

156.3420, -12.0006, 22.5021

Tritanomaly

157.0960, -5.4703, 27.9798

Monochromacy



Original Color

156.4890, -11.5801, 27.6351

Achromatopsia

156.0000, 0.0000, 0.0000

Achromatomaly

156.3280, -4.1057, 10.2363

CSS Examples

Text

The CSS property to change the color of the text to YUV 156.4890, -11.5801, 27.6351 is called "color". The color property can be set on classes, ids or directly on the HTML element.

This example shows how text in the color `rgb(188, 145, 133)` looks like.

```
.text, #text, p{  
    color:rgb(188, 145, 133)  
}
```

If you want to add a text shadow in that color use the text-shadow property, you can generate a text shadow directly with our [CSS Text Shadow Generator](#).

Here you see how black text with a 4 pixel rgb(188, 145, 133) colored shadow looks like.

```
.shadow{ text-shadow: 4px 4px 2px rgb(188, 145, 133) }
```

Border

The CSS property to change the border of an element to YUV 156.4890, -11.5801, 27.6351 is called "border".

The border property can be set on classes, ids or directly on the HTML element.

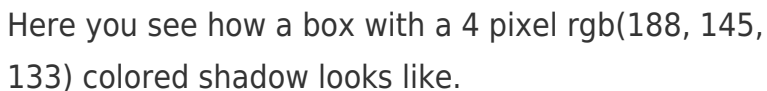
This example shows the color as border, it can be applied via the CSS property "border" or "border-color".

```
.border, #border, table{ border:4px solid rgb(188, 145, 133) }
```


If only the border color should be changed use the property `border-color`.

```
.border{ border-color:rgb(188, 145, 133) }
```

If you want to add a box shadow in that color use:



Here you see how a box with a 4 pixel `rgb(188, 145, 133)` colored shadow looks like.

```
.boxshadow{ -moz-box-shadow:4px 4px 4px 4px rgb(188, 145, 133); -webkit-box-shadow:4px 4px 4px 4px rgb(188, 145, 133); box-shadow:4px 4px 4px 4px rgb(188, 145, 133) }
```

Background

The CSS property to change the background color of an element to YUV 156.4890, -11.5801, 27.6351 is called "background". The background property can be set on classes, ids or directly on the HTML element.

```
.background, #background, body{  
background: rgb(188, 145, 133) }
```

If only the background color should be changed can be used:

```
.background{ background-color: rgb(188,  
145, 133) }
```

This example shows the color as background, it is applied via the CSS property "background".

To optimize and compress your CSS code, you can use our [online CSS compressor and optimizer](#) based on csstidy. If you want to create a linear or radial gradient as background or border, check our [CSS Gradient Generator](#).

Hey! You found this booklet interesting? Support Converting Colors with the new Membership Option!

The pro membership hides all ads, plus gives you double the colors in the color bucket, and more awesome pro features!

[Learn more, Memberships starting at \\$2.50/m!](#)

**Follow me
on Twitter!**

@ConvertingColor