

Converting Colors

YUV(157.2830, -15.9155,
18.1688)

Have a look what the booklet for
YUV(157.2830, -15.9155, 18.1688)
contains.

YUV(157.2830, -15.9155, 18.1688)	3
<i>Conversions</i>	4
<i>Details</i>	6
<i>Harmonies</i>	12
<i>Previews</i>	24
<i>Color Blindness Simulation</i>	28
<i>CSS Examples</i>	31

Color

**YUV(157.2830, -15.9155,
18.1688)**

Conversions

Conversions Part 1

Format	Color
Hex	B2997D
RGB	178, 153, 125
RGB Percent	70%, 60%, 49%
CMY	0.3020, 0.4000, 0.5098
CMYK	0.00, 0.14, 0.30, 0.30
HSL	32°, 26%, 59%
HSV	32°, 30%, 70%
XYZ	33.4530, 33.7281, 24.1490
YIQ	157.2830, 23.8880, -3.4080

Conversions

Conversions Part 2

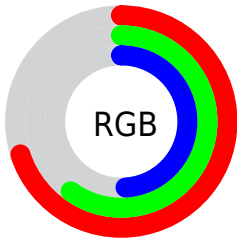
Format	Color
RYB	172, 178, 125
Decimal	11704701
CIELab	64.75, 4.98, 18.15
CIELCh	65, 18.825, 74.665
Yxy	33.7281, 0.3663, 0.3693
Android (android.graphics.Color)	4289894781 (0xFFB2997D)
YUV	157.2830, -15.9155, 18.1688
Hunter-Lab	58.0759, 1.1871, 15.9992

Details

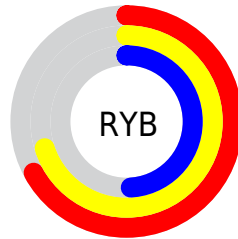
The YUV color $157.2830, -15.9155, 18.1688$ is a light color, and the websafe version is hex 999966 . A complement of this color would be $145.7170, 15.9155, -18.1688$, and the grayscale version is $157.0000, 0.0000, 0.0000$.

A 20% lighter version of the original color is $211.7670, -16.6471, 19.4983$, and $105.6140, -14.5997, 16.1245$ is the 20% darker color. If you saturate the color by 10%, you get $150.5350, -21.4628, 24.0868$, and if you desaturate by 10%, it is $164.0310, -10.3683, 12.2508$.

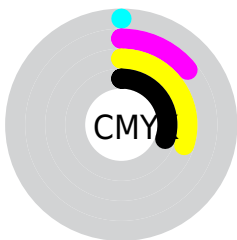
Distribution



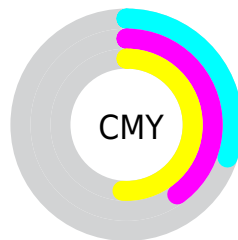
- Red (70%)
- Green (60%)
- Blue (49%)



- Red (67%)
- Yellow (70%)
- Blue (49%)



- Cyan (0%)
- Magenta (14%)
- Yellow (30%)
- Black (30%)



- Cyan (30%)
- Magenta (40%)
- Yellow (51%)

Brightness & Saturation Gradients

These gradients show how the YUV color 157.2830, -15.9155, 18.1688 changes by changing the brightness by 10 percent. The first figure shows a shift by +10% for each color and the second figure -10%.

Similar to the brightness gradients but the following saturation gradients show a change of the YUV color 157.2830, -15.9155, 18.1688 by changing the saturation by 10% instead.

■ 157.2830,
-15.9155, 18.1688

■ 157.2830,
-15.9155, 18.1688

■ 255.0000, 0.0000,
0.0000

■ 131.0980,
-15.3313, 17.4541

■ 211.7670,
-16.6471, 19.4983

■ 105.6140,
-14.5997, 16.1245

■ 237.5600,
-16.0521, 15.2949

■ 81.4290, -14.0155,
15.4098

■ 252.4920, -9.6096,
2.1995

■ 57.9450, -13.2839,
14.0802

■ 36.2330, -13.4259,
12.9507

■ 15.7150, -7.7475,
11.6509

■ 0.0000, 0.0000,

0.0000

■ 157.2830,
-15.9155, 18.1688

■ 157.2830,
-15.9155, 18.1688

■ 150.5350,
-21.4628, 24.0868

■ 164.0310,
-10.3683, 12.2508

■ 143.2000,
-26.7206, 30.5196

■ 171.3660, -5.1104,
5.8180

■ 136.5660,
-31.8310, 36.3376

■ 178.0000, 0.0000,
0.0000

■ 129.2310,
-37.0889, 42.7704

■ 185.3350, 5.2578,
-6.4328

■ 122.4830,
-42.6361, 48.6884

■ 192.0830, 10.8051,
-12.3508

■ 115.7350,
-48.1834, 54.6064

■ 198.8310, 16.3523,
-18.2688

■ 108.4000,
-53.4412, 61.0392

■ 206.1660, 21.6102,
-24.7016

■ 211.4320, 21.4790,
-29.3199

■ 216.7150, 18.8745,
-33.9531

Harmonies

Analogous

The Analogous color harmony consists of three colors that are next to each other on the color wheel.



158.6630, -12.1589, 26.6055



157.2830, -15.9155, 18.1688



155.6080, -15.5827, 4.7288

Triad

The Triadic color harmony groups three colors that are evenly spaced from another and form a triangle on the color wheel.



157.2830, -15.9155, 18.1688



150.3270, 7.2338, -33.6128



159.5140, 10.5926, 9.1962

Complementary

The Complementary color scheme is a pair of colors which are on the opposite of each other on the color wheel.



157.2830, -15.9155, 18.1688



145.7170, 15.9155, -18.1688

Split Complementary

Split-complementary colors differ from the complementary color scheme. The scheme consists of three colors, the original color and two neighbors of the complement color.



157.6690, 15.4462, -7.6027



157.2830, -15.9155, 18.1688



151.1620, 14.2171, -33.4681

Square

The Square scheme is like the rectangle color scheme, but the four colors are evenly spaced on the color wheel.



157.2830, -15.9155, 18.1688



151.3900, -1.6713, -24.0210



154.0260, 17.2422, -23.7018



160.2400, 2.8397, 22.5915

Rectangle

The Rectangle color scheme consists of four colors that form a rectangle on the color wheel.



157.2830, -15.9155, 18.1688



154.3510, -12.4980, -4.6928



154.0260, 17.2422, -23.7018



159.0510, 12.7929, 3.4633

Sweetspot

The Sweet Spot groups the original color and five complimentary colors.



157.2830, -15.9155, 18.1688



223.7360, -6.2788, 7.2475



143.8110, 3.5442, 29.9838



111.9960, -3.9420, 4.3885



245.0000, 0.0000, 0.0000



117.0000, 0.0000, 0.0000

Same Dimension

The Same Dimension uses a secret algorithm to generate beautiful new colors.



157.2830, -15.9155, 18.1688



199.6450, -24.9680, 28.3753



171.6590, -23.0029, 4.6841



85.6260, -2.7736, 2.9590



93.2940, -45.9939, 52.3622



15.4050, -7.5947, 9.2918

Inverse Universe

The Inverse Universe completely reimagines the original color for something new.



145.7170, 15.9155, -18.1688



181.3550, 24.9680, -28.3753



131.3410, 23.0029, -4.6841



83.9610, 2.4842, -3.4738



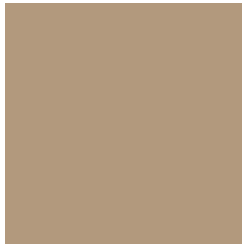
59.7060, 45.9939, -52.3622



10.0080, 7.8841, -8.7770

Previews

White Background



This preview shows how the YUV color 157.2830, -15.9155, 18.1688 looks on a white background.

Color Contrast Check

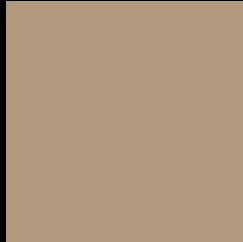
Large Text (above 18pt) WCAG AA × Fail

Any Text WCAG AA × Fail

Large Text (above 18pt) WCAG AAA × Fail

Any Text WCAG AAA × Fail

Black Background



This preview shows how the YUV color 157.2830, -15.9155, 18.1688 looks on a black background.

Color Contrast Check

Large Text (above 18pt) WCAG AA ✓ Pass

Any Text WCAG AA ✓ Pass

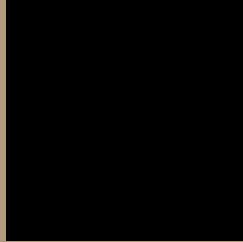
Large Text (above 18pt) WCAG AAA ✓ Pass

Any Text WCAG AAA ✓ Pass

If you want to check with other color combinations, try the [Color Contrast Checker](#).

YUV 157.2830, -15.9155, 18.1688

Background



This preview shows how black text looks on a background with the YUV color 157.2830, -15.9155, 18.1688.



This preview shows how white text looks on a background with the YUV color 157.2830, -15.9155, 18.1688.

Color Blindness Simulation

Color vision deficiency is a very complex topic, and I could not describe the different causes any better than Wikipedia does, so if you want to learn more, you should check out their [article about color blindness](#).

Dichromacy



Original Color

157.2830, -15.9155, 18.1688

Protanopia

156.5700, -14.5780, 9.1471

Deuteranopia

157.6040, -16.0738, 22.2723



Tritanopia

159.5340, 0.2297, 19.7027

Trichromacy



Original Color

157.2830, -15.9155, 18.1688

Protanomaly

157.0650, -15.3150, 12.2210

Deuteranomaly

157.5930, -16.0683, 20.5279

Tritanomaly

158.9270, -5.8800, 19.3580

Monochromacy



Original Color

157.2830, -15.9155, 18.1688

Achromatopsia

157.0000, 0.0000, 0.0000

Achromatomaly

157.4370, -6.1314, 6.6328

CSS Examples

Text

The CSS property to change the color of the text to YUV 157.2830, -15.9155, 18.1688 is called "color". The color property can be set on classes, ids or directly on the HTML element.

This example shows how text in the color `rgb(178, 153, 125)` looks like.

```
.text, #text, p{  
    color:rgb(178, 153, 125)  
}
```

If you want to add a text shadow in that color use the text-shadow property, you can generate a text shadow directly with our [CSS Text Shadow Generator](#).

Here you see how black text with a 4 pixel rgb(178, 153, 125) colored shadow looks like.

```
.shadow{ text-shadow: 4px 4px 2px rgb(178, 153, 125) }
```

Border

The CSS property to change the border of an element to YUV 157.2830, -15.9155, 18.1688 is called "border".

The border property can be set on classes, ids or directly on the HTML element.

This example shows the color as border, it can be applied via the CSS property "border" or "border-color".

```
.border, #border, table{ border:4px solid rgb(178, 153, 125) }
```


If only the border color should be changed use the property `border-color`.

```
.border{ border-color:rgb(178, 153, 125) }
```

If you want to add a box shadow in that color use:

Here you see how a box with a 4 pixel `rgb(178, 153, 125)` colored shadow looks like.

```
.boxshadow{ -moz-box-shadow:4px 4px 4px  
4px rgb(178, 153, 125); -webkit-box-  
shadow:4px 4px 4px 4px rgb(178, 153, 125);  
box-shadow:4px 4px 4px 4px rgb(178, 153,  
125) }
```

Background

The CSS property to change the background color of an element to YUV 157.2830, -15.9155, 18.1688 is called "background". The background property can be set on classes, ids or directly on the HTML element.

```
.background, #background, body{  
background: rgb(178, 153, 125) }
```

If only the background color should be changed can be used:

```
.background{ background-color: rgb(178,  
153, 125) }
```

This example shows the color as background, it is applied via the CSS property "background".

To optimize and compress your CSS code, you can use our [online CSS compressor and optimizer](#) based on csstidy. If you want to create a linear or radial gradient as background or border, check our [CSS Gradient Generator](#).

Hey! You found this booklet interesting? Support Converting Colors with the new Membership Option!

The pro membership hides all ads, plus gives you double the colors in the color bucket, and more awesome pro features!

[Learn more, Memberships starting at \\$2.50/m!](#)

**Follow me
on Twitter!**

@ConvertingColor