

Converting Colors

YUV(157.3200, -11.9898,
19.0134)

Have a look what the booklet for
YUV(157.3200, -11.9898, 19.0134)
contains.

YUV(157.3200, -11.9898, 19.0134)	3
<i>Conversions</i>	4
<i>Details</i>	6
<i>Harmonies</i>	12
<i>Previews</i>	24
<i>Color Blindness Simulation</i>	28
<i>CSS Examples</i>	31

Color

**YUV(157.3200, -11.9898,
19.0134)**

Conversions

Conversions Part 1

Format	Color
Hex	B39785
RGB	179, 151, 133
RGB Percent	70%, 59%, 52%
CMY	0.2980, 0.4078, 0.4784
CMYK	0.00, 0.16, 0.26, 0.30
HSL	23°, 23%, 61%
HSV	23°, 26%, 70%
XYZ	33.8907, 33.4104, 26.8529
YIQ	157.3200, 22.4660, 0.3380

Conversions

Conversions Part 2

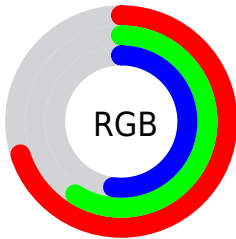
Format	Color
RYB	179, 163, 133
Decimal	11769733
CIELab	64.49, 7.61, 13.36
CIELCh	64, 15.372, 60.336
Yxy	33.4104, 0.3599, 0.3548
Android (android.graphics.Color)	4289959813 (0xFFB39785)
YUV	157.3200, -11.9898, 19.0134
Hunter-Lab	57.8017, 3.5062, 12.9169

Details

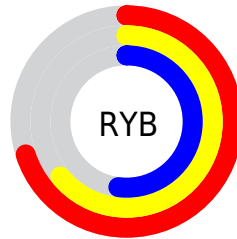
The YUV color $157.3200, -11.9898, 19.0134$ is a light color, and the websafe version is hex $CC9999$. A complement of this color would be $154.6800, 11.9898, -19.0134$, and the grayscale version is $157.0000, 0.0000, 0.0000$.

A 20% lighter version of the original color is $211.8040, -12.7214, 20.3429$, and $105.8360, -11.2581, 17.6838$ is the 20% darker color. If you saturate the color by 10%, you get $148.8110, -16.6688, 26.4758$, and if you desaturate by 10%, it is $165.8290, -7.3107, 11.5510$.

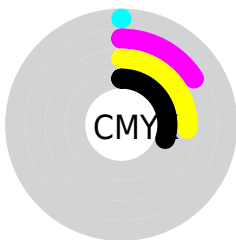
Distribution



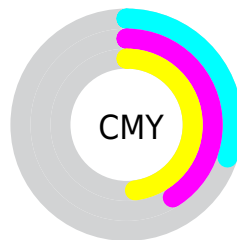
- Red (70%)
- Green (59%)
- Blue (52%)



- Red (70%)
- Yellow (64%)
- Blue (52%)



- Cyan (0%)
- Magenta (16%)
- Yellow (26%)
- Black (30%)



- Cyan (30%)
- Magenta (41%)
- Yellow (48%)

Brightness & Saturation Gradients

These gradients show how the YUV color 157.3200, -11.9898, 19.0134 changes by changing the brightness by 10 percent. The first figure shows a shift by +10% for each color and the second figure -10%.

Similar to the brightness gradients but the following saturation gradients show a change of the YUV color 157.3200, -11.9898, 19.0134 by changing the saturation by 10% instead.

■ 157.3200,
-11.9898, 19.0134

■ 157.3200,
-11.9898, 19.0134

■ 255.0000, 0.0000,
0.0000

■ 131.1350,
-11.4056, 18.2986

■ 211.8040,
-12.7214, 20.3429

■ 105.8360,
-11.2581, 17.6838

■ 237.4120,
-11.5421, 15.4247

■ 81.3520, -10.5265,
16.3543

■ 253.5180, -5.6784,
1.2997

■ 58.4550, -10.0843,
14.5100

■ 36.3840, -9.0633,
13.6952

■ 15.1390, -7.4635,
13.9101

■ 0.0000, 0.0000,

0.0000

■ 157.3200,
-11.9898, 19.0134

■ 157.3200,
-11.9898, 19.0134

■ 148.8110,
-16.6688, 26.4758

■ 165.8290, -7.3107,
11.5510

■ 140.3020,
-21.3479, 33.9381

■ 174.3380, -2.6316,
4.0886

■ 131.7930,
-26.0269, 41.4005

■ 182.8470, 2.0474,
-3.3738

■ 123.2840,
-30.7060, 48.8629

■ 191.3560, 6.7265,
-10.8362

■ 115.4760,
-35.2377, 55.7105

■ 199.2780, 11.6949,
-17.7838

■ 106.9670,
-39.9167, 63.1729

■ 207.6730, 15.9372,
-25.1462

■ 98.4580, -44.5958,
70.6353

■ 215.8400, 19.3059,
-32.3087

■ 94.6110, -46.6432,
74.0092

■ 222.2970, 16.1226,
-37.9715

■ 228.7540, 12.9393,
-43.6343

Harmonies

Analogous

The Analogous color harmony consists of three colors that are next to each other on the color wheel.



158.4930, -7.6380, 23.2466



157.3200, -11.9898, 19.0134



155.6240, -13.1256, 9.9768

Triad

The Triadic color harmony groups three colors that are evenly spaced from another and form a triangle on the color wheel.



157.3200, -11.9898, 19.0134



151.1280, 2.4019, -23.7913



157.8720, 10.9091, 0.9893

Complementary

The Complementary color scheme is a pair of colors which are on the opposite of each other on the color wheel.



157.3200, -11.9898, 19.0134



154.6800, 11.9898, -19.0134

Split Complementary

Split-complementary colors differ from the complementary color scheme. The scheme consists of three colors, the original color and two neighbors of the complement color.



155.2940, 14.1521, -12.5358



157.3200, -11.9898, 19.0134



151.5280, 9.1067, -27.6501

Square

The Square scheme is like the rectangle color scheme, but the four colors are evenly spaced on the color wheel.



157.3200, -11.9898, 19.0134



152.5330, -5.1928, -14.4994



152.7010, 13.4584, -23.4168



159.1680, 5.3402, 13.8847

Rectangle

The Rectangle color scheme consists of four colors that form a rectangle on the color wheel.



157.3200, -11.9898, 19.0134



154.6230, -11.6461, 2.0846



152.7010, 13.4584, -23.4168



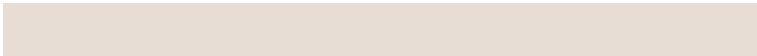
156.8930, 12.3778, -3.4142

Sweetspot

The Sweet Spot groups the original color and five complimentary colors.



157.3200, -11.9898, 19.0134



223.3770, -5.1159, 7.5624



149.9460, 5.4496, 25.4804



111.6370, -2.7790, 4.7034



245.0000, 0.0000, 0.0000



117.0000, 0.0000, 0.0000

Same Dimension

The Same Dimension uses a secret algorithm to generate beautiful new colors.



157.3200, -11.9898, 19.0134



197.9640, -18.7163, 29.8496



170.8210, -18.6458, 7.1730



85.0390, -2.4842, 3.4738



80.9670, -39.9167, 63.1729



13.6440, -6.7265, 10.8362

Inverse Universe

The Inverse Universe completely reimagines the original color for something new.



154.6800, 11.9898, -19.0134



194.0360, 18.7163, -29.8496



141.1790, 18.6458, -7.1730



84.5480, 2.1948, -3.9886



72.0330, 39.9167, -63.1729



12.3560, 6.7265, -10.8362

Previews

White Background



This preview shows how the YUV color 157.3200, -11.9898, 19.0134 looks on a white background.

Color Contrast Check

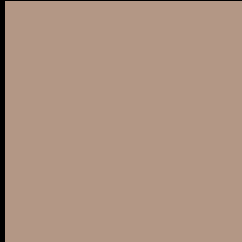
Large Text (above 18pt) WCAG AA × Fail

Any Text WCAG AA × Fail

Large Text (above 18pt) WCAG AAA × Fail

Any Text WCAG AAA × Fail

Black Background



This preview shows how the YUV color 157.3200, -11.9898, 19.0134 looks on a black background.

Color Contrast Check

Large Text (above 18pt) WCAG AA ✓ Pass

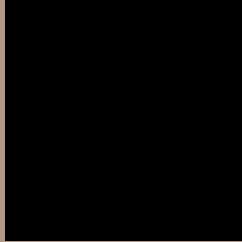
Any Text WCAG AA ✓ Pass

Large Text (above 18pt) WCAG AAA ✓ Pass

Any Text WCAG AAA ✓ Pass

If you want to check with other color combinations, try the [Color Contrast Checker](#).

YUV 157.3200, -11.9898, 19.0134 Background



This preview shows how black text looks on a background with the YUV color 157.3200, -11.9898, 19.0134.



This preview shows how white text looks on a background with the YUV color 157.3200, -11.9898, 19.0134.

Color Blindness Simulation

Color vision deficiency is a very complex topic, and I could not describe the different causes any better than Wikipedia does, so if you want to learn more, you should check out their [article about color blindness](#).

Dichromacy



Original Color

157.3200, -11.9898, 19.0134

Protanopia

156.1120, -9.9152, 6.9178

Deuteranopia

157.6190, -12.1372, 19.6281



Tritanopia

158.8330, 0.0823, 20.3175

Trichromacy



Original Color

157.3200, -11.9898, 19.0134

Protanomaly

156.3190, -10.5103, 11.1212

Deuteranomaly

157.6190, -12.1372, 19.6281

Tritanomaly

158.0950, -3.9908, 20.0877

Monochromacy



Original Color

157.3200, -11.9898, 19.0134

Achromatopsia

157.0000, 0.0000, 0.0000

Achromatomaly

157.1920, -4.5317, 6.8476

CSS Examples

Text

The CSS property to change the color of the text to YUV 157.3200, -11.9898, 19.0134 is called "color". The color property can be set on classes, ids or directly on the HTML element.

This example shows how text in the color `rgb(179, 151, 133)` looks like.

```
.text, #text, p{  
    color:rgb(179, 151, 133)  
}
```

If you want to add a text shadow in that color use the text-shadow property, you can generate a text shadow directly with our [CSS Text Shadow Generator](#).

Here you see how black text with a 4 pixel rgb(179, 151, 133) colored shadow looks like.

```
.shadow{ text-shadow: 4px 4px 2px rgb(179, 151, 133) }
```

Border

The CSS property to change the border of an element to YUV 157.3200, -11.9898, 19.0134 is called "border".

The border property can be set on classes, ids or directly on the HTML element.

This example shows the color as border, it can be applied via the CSS property "border" or "border-color".

```
.border, #border, table{ border:4px solid rgb(179, 151, 133) }
```


If only the border color should be changed use the property `border-color`.

```
.border{ border-color:rgb(179, 151, 133) }
```

If you want to add a box shadow in that color use:

Here you see how a box with a 4 pixel `rgb(179, 151, 133)` colored shadow looks like.

```
.boxshadow{ -moz-box-shadow:4px 4px 4px  
4px rgb(179, 151, 133); -webkit-box-  
shadow:4px 4px 4px 4px rgb(179, 151, 133);  
box-shadow:4px 4px 4px 4px rgb(179, 151,  
133) }
```

Background

The CSS property to change the background color of an element to YUV 157.3200, -11.9898, 19.0134 is called "background". The background property can be set on classes, ids or directly on the HTML element.

```
.background, #background, body{  
background: rgb(179, 151, 133) }
```

If only the background color should be changed can be used:

```
.background{ background-color: rgb(179,  
151, 133) }
```

This example shows the color as background, it is applied via the CSS property "background".

To optimize and compress your CSS code, you can use our [online CSS compressor and optimizer](#) based on csstidy. If you want to create a linear or radial gradient as background or border, check our [CSS Gradient Generator](#).

Hey! You found this booklet interesting? Support Converting Colors with the new Membership Option!

The pro membership hides all ads, plus gives you double the colors in the color bucket, and more awesome pro features!

[Learn more, Memberships starting at \\$2.50/m!](#)

**Follow me
on Twitter!**

@ConvertingColor