

Converting Colors

YUV(157.6360, -11.1595,
32.7682)

Have a look what the booklet for
YUV(157.6360, -11.1595, 32.7682)
contains.

YUV(157.6360, -11.1595, 32.7682)	3
<i>Conversions</i>	4
<i>Details</i>	6
<i>Harmonies</i>	12
<i>Previews</i>	24
<i>Color Blindness Simulation</i>	28
<i>CSS Examples</i>	31

Color

**YUV(157.6360, -11.1595,
32.7682)**

Conversions

Conversions Part 1

Format	Color
Hex	C38F87
RGB	195, 143, 135
RGB Percent	76%, 56%, 53%
CMY	0.2353, 0.4392, 0.4706
CMYK	0.00, 0.27, 0.31, 0.24
HSL	8°, 33%, 65%
HSV	8°, 31%, 76%
XYZ	36.7013, 32.9963, 27.3562
YIQ	157.6360, 33.5600, 8.5360

Conversions

Conversions Part 2

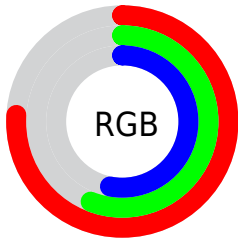
Format	Color
RYB	195, 144, 135
Decimal	12816263
CIELab	64.16, 18.59, 12.00
CIElCh	64, 22.127, 32.849
Yxy	32.9963, 0.3782, 0.3400
Android (android.graphics.Color)	4291006343 (0xFFC38F87)
YUV	157.6360, -11.1595, 32.7682
Hunter-Lab	57.4424, 13.5237, 11.9736

Details

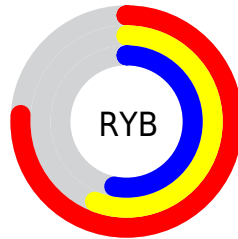
The YUV color $157.6360, -11.1595, 32.7682$ is a light color, and the websafe version is hex $CC9999$. A complement of this color would be $172.3640, 11.1595, -32.7682$, and the grayscale version is $158.0000, 0.0000, 0.0000$.

A 20% lighter version of the original color is $212.7180, -12.1860, 35.3273$, and $105.5540, -10.1331, 30.2091$ is the 20% darker color. If you saturate the color by 10%, you get $145.4910, -14.5391, 43.4194$, and if you desaturate by 10%, it is $169.8950, -7.3432, 22.0171$.

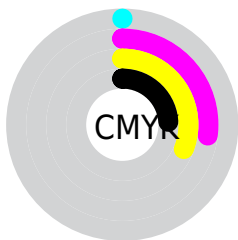
Distribution



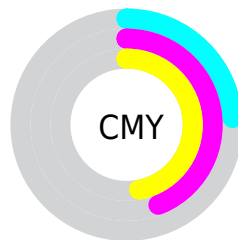
- Red (76%)
- Green (56%)
- Blue (53%)



- Red (76%)
- Yellow (56%)
- Blue (53%)



- Cyan (0%)
- Magenta (27%)
- Yellow (31%)
- Black (24%)



- Cyan (24%)
- Magenta (44%)
- Yellow (47%)

Brightness & Saturation Gradients

These gradients show how the YUV color 157.6360, -11.1595, 32.7682 changes by changing the brightness by 10 percent. The first figure shows a shift by +10% for each color and the second figure -10%.

Similar to the brightness gradients but the following saturation gradients show a change of the YUV color 157.6360, -11.1595, 32.7682 by changing the saturation by 10% instead.

■ 157.6360,
-11.1595, 32.7682

■ 157.6360,
-11.1595, 32.7682

255.0000, 0.0000,
0.0000

■ 131.1520,
-10.4279, 31.4387

■ 212.7180,
-12.1860, 35.3273

■ 105.5540,
-10.1331, 30.2091

■ 232.9440, -8.3534,
19.3431

■ 80.7710, -9.2541,
28.2648

■ 253.1590, -4.5154,
1.6146

■ 57.8740, -8.8119,
26.4205

■ 35.2050, -7.4961,
24.3762

■ 12.2590, -6.0437,
25.2059

■ 0.0000, 0.0000,

0.0000

■ 157.6360,
-11.1595, 32.7682

■ 157.6360,
-11.1595, 32.7682

■ 145.4910,
-14.5391, 43.4194

■ 169.8950, -7.3432,
22.0171

■ 133.2320,
-18.3554, 54.1705

■ 182.0400, -3.9637,
11.3659

■ 121.0870,
-21.7349, 64.8217

■ 194.2990, -0.1474,
0.6148

■ 108.8280,
-25.5512, 75.5728

■ 206.4440, 3.2321,
-10.0364

■ 96.5690, -29.3675,
86.3240

■ 218.5890, 6.6116,
-20.6876

■ 85.0110, -33.0364,
96.4604

■ 230.2610, 10.7173,
-30.9239

■ 73.5670, -36.2685,
106.4967

■ 237.0600, 8.8444,
-36.8866

Harmonies

Analogous

The Analogous color harmony consists of three colors that are next to each other on the color wheel.



158.3290, -2.1342, 31.2835



157.6360, -11.1595, 32.7682



155.9850, -17.2476, 25.4462

Triad

The Triadic color harmony groups three colors that are evenly spaced from another and form a triangle on the color wheel.



157.6360, -11.1595, 32.7682



149.5490, -6.1867, -22.4065



154.4550, 19.9887, -17.9390

Complementary

The Complementary color scheme is a pair of colors which are on the opposite of each other on the color wheel.



157.6360, -11.1595, 32.7682



172.3640, 11.1595, -32.7682

Split Complementary

Split-complementary colors differ from the complementary color scheme. The scheme consists of three colors, the original color and two neighbors of the complement color.



149.6440, 19.8955, -34.7678



157.6360, -11.1595, 32.7682



147.6210, 4.6238, -36.5016

Square

The Square scheme is like the rectangle color scheme, but the four colors are evenly spaced on the color wheel.



157.6360, -11.1595, 32.7682



152.3680, -14.9714, -4.7077



147.1070, 14.2442, -42.1898



157.7350, 15.4136, 2.8634

Rectangle

The Rectangle color scheme consists of four colors that form a rectangle on the color wheel.



157.6360, -11.1595, 32.7682



155.4740, -18.9677, 17.1243



147.1070, 14.2442, -42.1898



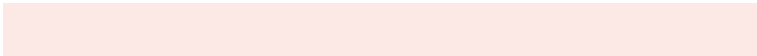
152.8240, 20.2998, -24.4016

Sweetspot

The Sweet Spot groups the original color and five complimentary colors.



157.6360, -11.1595, 32.7682



238.3390, -4.1111, 11.9807



158.8680, 13.8691, 31.6878



118.6590, -2.7899, 8.1921



0.0000, 0.0000, 0.0000



128.0000, 0.0000, 0.0000

Same Dimension

The Same Dimension uses a secret algorithm to generate beautiful new colors.



157.6360, -11.1595, 32.7682



193.8510, -17.1815, 50.9967



175.2460, -19.8413, 17.3243



91.1640, -2.0529, 5.1182



60.4660, -29.8097, 88.1683



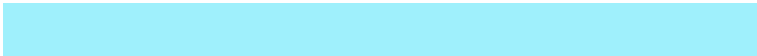
12.2150, -6.0220, 18.2284

Inverse Universe

The Inverse Universe completely reimagines the original color for something new.



172.3640, 11.1595, -32.7682



217.1490, 17.1815, -50.9967



154.7540, 19.8413, -17.3243



93.4230, 1.7635, -5.6330



99.9470, 30.0991, -87.6535



20.7850, 6.0220, -18.2284

Previews

White Background



This preview shows how the YUV color 157.6360, -11.1595, 32.7682 looks on a white background.

Color Contrast Check

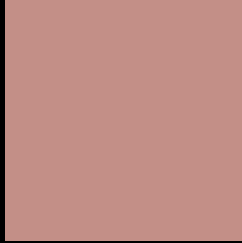
Large Text (above 18pt) WCAG AA × Fail

Any Text WCAG AA × Fail

Large Text (above 18pt) WCAG AAA × Fail

Any Text WCAG AAA × Fail

Black Background



This preview shows how the YUV color 157.6360, -11.1595, 32.7682 looks on a black background.

Color Contrast Check

Large Text (above 18pt) WCAG AA ✓ Pass

Any Text WCAG AA ✓ Pass

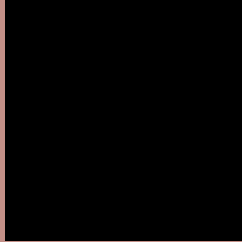
Large Text (above 18pt) WCAG AAA ✓ Pass

Any Text WCAG AAA ✓ Pass

If you want to check with other color combinations, try the [Color Contrast Checker](#).

YUV 157.6360, -11.1595, 32.7682

Background



This preview shows how black text looks on a background with the YUV color 157.6360, -11.1595, 32.7682.



This preview shows how white text looks on a background with the YUV color 157.6360, -11.1595, 32.7682.

Color Blindness Simulation

Color vision deficiency is a very complex topic, and I could not describe the different causes any better than Wikipedia does, so if you want to learn more, you should check out their [article about color blindness](#).

Dichromacy



Original Color

157.6360, -11.1595, 32.7682

Protanopia

155.4970, -7.1470, 5.7031

Deuteranopia

156.8470, -11.2636, 19.4282



Tritanopia

158.8840, -3.8868, 33.4277

Trichromacy



Original Color

157.6360, -11.1595, 32.7682

Protanomaly

156.5090, -8.6319, 15.3396

Deuteranomaly

156.8800, -11.2798, 24.6612

Tritanomaly

158.4880, -6.6496, 32.8980

Monochromacy



Original Color

157.6360, -11.1595, 32.7682

Achromatopsia

158.0000, 0.0000, 0.0000

Achromatomaly

158.0400, -3.9637, 11.3659

CSS Examples

Text

The CSS property to change the color of the text to YUV 157.6360, -11.1595, 32.7682 is called "color". The color property can be set on classes, ids or directly on the HTML element.

This example shows how text in the color `rgb(195, 143, 135)` looks like.

```
.text, #text, p{  
    color:rgb(195, 143, 135)  
}
```

If you want to add a text shadow in that color use the text-shadow property, you can generate a text shadow directly with our [CSS Text Shadow Generator](#).

Here you see how black text with a 4 pixel rgb(195, 143, 135) colored shadow looks like.

```
.shadow{ text-shadow: 4px 4px 2px rgb(195, 143, 135) }
```

Border

The CSS property to change the border of an element to YUV 157.6360, -11.1595, 32.7682 is called "border".

The border property can be set on classes, ids or directly on the HTML element.

This example shows the color as border, it can be applied via the CSS property "border" or "border-color".

```
.border, #border, table{ border:4px solid rgb(195, 143, 135) }
```


If only the border color should be changed use the property `border-color`.

```
.border{ border-color:rgb(195, 143, 135) }
```

If you want to add a box shadow in that color use:

Here you see how a box with a 4 pixel `rgb(195, 143, 135)` colored shadow looks like.

```
.boxshadow{ -moz-box-shadow:4px 4px 4px  
4px rgb(195, 143, 135); -webkit-box-  
shadow:4px 4px 4px 4px rgb(195, 143, 135);  
box-shadow:4px 4px 4px 4px rgb(195, 143,  
135) }
```

Background

The CSS property to change the background color of an element to YUV 157.6360, -11.1595, 32.7682 is called "background". The background property can be set on classes, ids or directly on the HTML element.

```
.background, #background, body{  
background: rgb(195, 143, 135) }
```

If only the background color should be changed can be used:

```
.background{ background-color: rgb(195,  
143, 135) }
```

This example shows the color as background, it is applied via the CSS property "background".

To optimize and compress your CSS code, you can use our [online CSS compressor and optimizer](#) based on csstidy. If you want to create a linear or radial gradient as background or border, check our [CSS Gradient Generator](#).

Hey! You found this booklet interesting? Support Converting Colors with the new Membership Option!

The pro membership hides all ads, plus gives you double the colors in the color bucket, and more awesome pro features!

[Learn more, Memberships starting at \\$2.50/m!](#)

**Follow me
on Twitter!**

@ConvertingColor