

Converting Colors

YUV(157.6650, -4.7648,
81.8548)

Have a look what the booklet for
YUV(157.6650, -4.7648, 81.8548)
contains.

YUV(157.6650, -4.7648, 81.8548)	3
<i>Conversions</i>	4
<i>Details</i>	6
<i>Harmonies</i>	12
<i>Previews</i>	24
<i>Color Blindness Simulation</i>	28
<i>CSS Examples</i>	31

Color

**YUV(157.6650, -4.7648,
81.8548)**

Conversions

Conversions Part 1

Format	Color
Hex	FB7094
RGB	251, 112, 148
RGB Percent	98%, 44%, 58%
CMY	0.0157, 0.5608, 0.4196
CMYK	0.00, 0.55, 0.41, 0.02
HSL	344°, 95%, 71%
HSV	344°, 55%, 98%
XYZ	50.9231, 34.2357, 31.9412
YIQ	157.6650, 71.2880, 40.6640

Conversions

Conversions Part 2

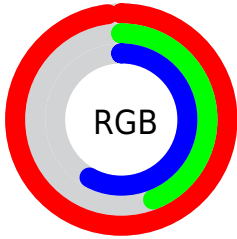
Format	Color
RYB	251, 112, 148
Decimal	16478356
CIELab	65.15, 56.32, 7.02
CIELCh	65, 56.751, 7.108
Yxy	34.2357, 0.4349, 0.2924
Android (android.graphics.Color)	4294668436 (0xFFFB7094)
YUV	157.6650, -4.7648, 81.8548
Hunter-Lab	58.5113, 52.9562, 8.5916

Details

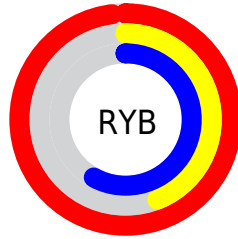
The YUV color **157.6650, -4.7648, 81.8548** is a light color, and the websafe version is hex **FF6699**. A complement of this color would be **205.3350, 4.7648, -81.8548**, and the grayscale version is **158.0000, 0.0000, 0.0000**.

A 20% lighter version of the original color is **197.8890, 2.0267, 50.0863**, and **100.8540, -1.4070, 78.1810** is the 20% darker color. If you saturate the color by 10%, you get **140.8240, -5.8292, 96.6244**, and if you desaturate by 10%, it is **174.5060, -3.7005, 67.0852**.

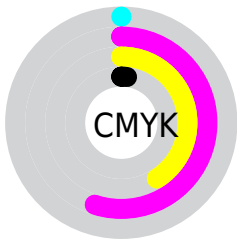
Distribution



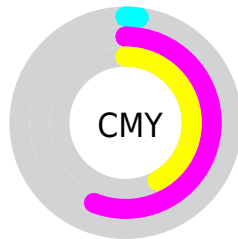
- Red (98%)
- Green (44%)
- Blue (58%)



- Red (98%)
- Yellow (44%)
- Blue (58%)



- Cyan (0%)
- Magenta (55%)
- Yellow (41%)
- Black (2%)



- Cyan (2%)
- Magenta (56%)
- Yellow (42%)

Brightness & Saturation Gradients

These gradients show how the YUV color 157.6650, -4.7648, 81.8548 changes by changing the brightness by 10 percent. The first figure shows a shift by +10% for each color and the second figure -10%.

Similar to the brightness gradients but the following saturation gradients show a change of the YUV color 157.6650, -4.7648, 81.8548 by changing the saturation by 10% instead.

157.6650, -4.7648,
81.8548

157.6650, -4.7648,
81.8548

255.0000, 0.0000,
0.0000

128.9960, -3.4490,
79.8105

197.8890, 2.0267,
50.0863

100.8540, -1.4070,
78.1810

217.5170, 6.1541,
32.8726

68.9020, 2.5133,
80.7699

237.9770, 8.3923,
14.9292

45.0970, 3.4032,
75.3369

34.0320, -1.4948,
59.6079

22.9950, -8.8715,
45.6084

14.2810, -6.0545,

28.6946

■ 0.0000, 0.0000,
0.0000

■ 157.6650, -4.7648,
81.8548

■ 157.6650, -4.7648,
81.8548

■ 140.8240, -5.8292,
96.6244

■ 174.5060, -3.7005,
67.0852

■ 124.0970, -6.4568,
111.2939

■ 191.2330, -3.0729,
52.4157

■ 107.2560, -7.5212,
126.0635

■ 208.0740, -2.0085,
37.6461

■ 90.5290, -8.1488,
140.7331

■ 224.8010, -1.3809,
22.9765

■ 82.4590, -8.6073,
147.8105

■ 242.2290, -0.6059,
7.6922

253.8040, 0.5896,
-2.4591

Harmonies

Analogous

The Analogous color harmony consists of three colors that are next to each other on the color wheel.



161.5970, 18.4397, 59.1124



157.6650, -4.7648, 81.8548



156.1550, -28.1774, 77.9171

Triad

The Triadic color harmony groups three colors that are evenly spaced from another and form a triangle on the color wheel.



157.6650, -4.7648, 81.8548



145.9380, -36.4514, -21.8706



130.7520, 59.2823, -114.6695

Complementary

The Complementary color scheme is a pair of colors which are on the opposite of each other on the color wheel.



157.6650, -4.7648, 81.8548



205.3350, 4.7648, -81.8548

Split Complementary

Split-complementary colors differ from the complementary color scheme. The scheme consists of three colors, the original color and two neighbors of the complement color.



131.0990, 42.8422, -114.9738



157.6650, -4.7648, 81.8548



127.3700, -5.1124, -87.1475

Square

The Square scheme is like the rectangle color scheme, but the four colors are evenly spaced on the color wheel.



157.6650, -4.7648, 81.8548



151.2440, -50.4063, 20.8340



126.6870, 20.8603, -111.1045



146.9100, 53.2884, -58.6801

Rectangle

The Rectangle color scheme consists of four colors that form a rectangle on the color wheel.



157.6650, -4.7648, 81.8548



155.7390, -40.7903, 63.3729



126.6870, 20.8603, -111.1045



131.6010, 54.9197, -115.4141

Sweetspot

The Sweet Spot groups the original color and five complimentary colors.



157.6650, -4.7648, 81.8548



226.1110, -1.5337, 25.3357



158.3440, 45.6794, 48.8103



110.5720, -0.7750, 15.2844



0.0000, 0.0000, 0.0000



128.0000, 0.0000, 0.0000

Same Dimension

The Same Dimension uses a secret algorithm to generate beautiful new colors.



157.6650, -4.7648, 81.8548



142.1340, -5.9821, 98.9835



172.3450, -29.7501, 68.9804



116.3430, -0.1691, 7.5922



62.0970, -6.4568, 111.2939



20.0630, -2.0031, 35.9017

Inverse Universe

The Inverse Universe completely reimagines the original color for something new.



157.6650, -4.7648, 81.8548



142.1340, -5.9821, 98.9835



190.6550, 29.7501, -68.9804



116.3430, -0.1691, 7.5922



62.0970, -6.4568, 111.2939



20.0630, -2.0031, 35.9017

Previews

White Background



This preview shows how the YUV color 157.6650, -4.7648, 81.8548 looks on a white background.

Color Contrast Check

Large Text (above 18pt) WCAG AA × Fail

Any Text WCAG AA × Fail

Large Text (above 18pt) WCAG AAA × Fail

Any Text WCAG AAA × Fail

Black Background



This preview shows how the YUV color 157.6650, -4.7648, 81.8548 looks on a black background.

Color Contrast Check

Large Text (above 18pt) WCAG AA ✓ Pass

Any Text WCAG AA ✓ Pass

Large Text (above 18pt) WCAG AAA ✓ Pass

Any Text WCAG AAA ✓ Pass

If you want to check with other color combinations, try the [Color Contrast Checker](#).

YUV 157.6650, -4.7648, 81.8548

Background



This preview shows how black text looks on a background with the YUV color 157.6650, -4.7648, 81.8548.



This preview shows how white text looks on a background with the YUV color 157.6650, -4.7648,

81.8548.

Color Blindness Simulation

Color vision deficiency is a very complex topic, and I could not describe the different causes any better than Wikipedia does, so if you want to learn more, you should check out their [article about color blindness](#).

Dichromacy



Original Color

157.6650, -4.7648, 81.8548

Protanopia

158.9380, 7.4256, -1.6996

Deuteranopia

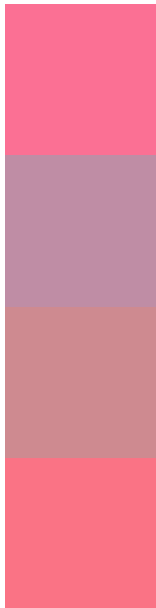
159.8190, -8.7848, 17.6987



Tritanopia

156.6790, -16.1107, 80.9655

Trichromacy



Original Color

157.6650, -4.7648, 81.8548

Protanomaly

158.6860, 3.1128, 28.3394

Deuteranomaly

159.0160, -7.4029, 41.2050

Tritanomaly

157.4170, -12.0376, 81.1953

Monochromacy



Original Color

157.6650, -4.7648, 81.8548

Achromatopsia

158.0000, 0.0000, 0.0000

Achromatomaly

157.7310, -1.8394, 30.0539

CSS Examples

Text

The CSS property to change the color of the text to YUV 157.6650, -4.7648, 81.8548 is called "color". The color property can be set on classes, ids or directly on the HTML element.

This example shows how text in the color `rgb(251, 112, 148)` looks like.

```
.text, #text, p{  
    color:rgb(251, 112, 148)  
}
```

If you want to add a text shadow in that color use the text-shadow property, you can generate a text shadow directly with our [CSS Text Shadow Generator](#).

Here you see how black text with a 4 pixel rgb(251, 112, 148) colored shadow looks like.

```
.shadow{ text-shadow: 4px 4px 2px rgb(251, 112, 148) }
```

Border

The CSS property to change the border of an element to YUV 157.6650, -4.7648, 81.8548 is called "border". The border property can be set on classes, ids or directly on the HTML element.

This example shows the color as border, it can be applied via the CSS property "border" or "border-color".

```
.border, #border, table{ border:4px solid rgb(251, 112, 148) }
```


If only the border color should be changed use the property `border-color`.

```
.border{ border-color:rgb(251, 112, 148) }
```

If you want to add a box shadow in that color use:

Here you see how a box with a 4 pixel `rgb(251, 112, 148)` colored shadow looks like.

```
.boxshadow{ -moz-box-shadow:4px 4px 4px  
4px rgb(251, 112, 148); -webkit-box-  
shadow:4px 4px 4px 4px rgb(251, 112, 148);  
box-shadow:4px 4px 4px 4px rgb(251, 112,  
148) }
```

Background

The CSS property to change the background color of an element to YUV 157.6650, -4.7648, 81.8548 is called "background". The background property can be set on classes, ids or directly on the HTML element.

```
.background, #background, body{  
background: rgb(251, 112, 148) }
```

If only the background color should be changed can be used:

```
.background{ background-color: rgb(251,  
112, 148) }
```

This example shows the color as background, it is applied via the CSS property "background".

To optimize and compress your CSS code, you can use our [online CSS compressor and optimizer](#) based on csstidy. If you want to create a linear or radial gradient as background or border, check our [CSS Gradient Generator](#).

Hey! You found this booklet interesting? Support Converting Colors with the new Membership Option!

The pro membership hides all ads, plus gives you double the colors in the color bucket, and more awesome pro features!

[Learn more, Memberships starting at \\$2.50/m!](#)

**Follow me
on Twitter!**

@ConvertingColor