

Converting Colors

YUV(158.3030, -26.2784,
28.6753)

Have a look what the booklet for
YUV(158.3030, -26.2784, 28.6753)
contains.

YUV(158.3030, -26.2784, 28.6753)	3
<i>Conversions</i>	4
<i>Details</i>	6
<i>Harmonies</i>	12
<i>Previews</i>	24
<i>Color Blindness Simulation</i>	28
<i>CSS Examples</i>	31

Color

**YUV(158.3030, -26.2784,
28.6753)**

Conversions

Conversions Part 1

Format	Color
Hex	BF9869
RGB	191, 152, 105
RGB Percent	75%, 60%, 41%
CMY	0.2510, 0.4039, 0.5882
CMYK	0.00, 0.20, 0.45, 0.25
HSL	33°, 40%, 58%
HSV	33°, 45%, 75%
XYZ	35.2639, 34.5528, 18.1753
YIQ	158.3030, 38.3310, -6.3490

Conversions

Conversions Part 2

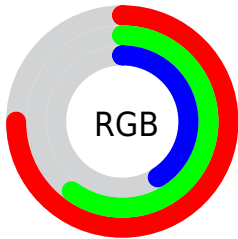
Format	Color
RYB	176, 191, 105
Decimal	12556393
CIELab	65.40, 8.42, 30.22
CIELCh	65, 31.374, 74.426
Yxy	34.5528, 0.4008, 0.3927
Android (android.graphics.Color)	4290746473 (0xFFBF9869)
YUV	158.3030, -26.2784, 28.6753
Hunter-Lab	58.7816, 4.2168, 22.8146

Details

The YUV color **158.3030, -26.2784, 28.6753** is a dark color, and the websafe version is hex **CC9966**. A complement of this color would be **137.6970, 26.2784, -28.6753**, and the grayscale version is **159.0000, 0.0000, 0.0000**.

A 20% lighter version of the original color is **213.2710, -27.7416, 31.3343**, and **106.4490, -24.3784, 25.9162** is the 20% darker color. If you saturate the color by 10%, you get **150.8540, -31.9730, 35.2080**, and if you desaturate by 10%, it is **165.7520, -20.5837, 22.1425**.

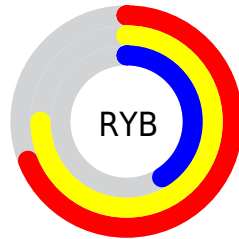
Distribution



Red (75%)

Green (60%)

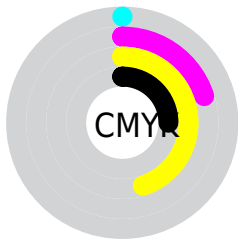
Blue (41%)



Red (69%)

Yellow (75%)

Blue (41%)

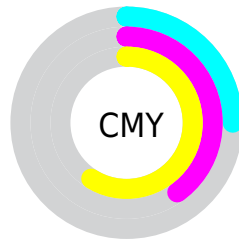


Cyan (0%)

Magenta (20%)

Yellow (45%)

Black (25%)



Cyan (25%)

Magenta (40%)

Yellow (59%)

Brightness & Saturation Gradients

These gradients show how the YUV color 158.3030, -26.2784, 28.6753 changes by changing the brightness by 10 percent. The first figure shows a shift by +10% for each color and the second figure -10%.

Similar to the brightness gradients but the following saturation gradients show a change of the YUV color 158.3030, -26.2784, 28.6753 by changing the saturation by 10% instead.

■ 158.3030,
-26.2784, 28.6753

■ 158.3030,
-26.2784, 28.6753

■ 255.0000, 0.0000,
0.0000

■ 131.8190,
-25.5468, 27.3457

■ 213.2710,
-27.7416, 31.3343

■ 106.4490,
-24.3784, 25.9162

■ 234.5790,
-24.9354, 17.9092

■ 81.6660, -23.4993,
23.9719

■ 250.0980,
-18.7823, 4.2991

■ 58.4700, -22.9097,
21.5128

■ 253.2900, -6.5520,
1.4997

■ 36.7130, -18.0995,
18.6687

■ 17.2100, -8.4845,
14.7248

■ 0.0000, 0.0000,

0.0000

■ 158.3030,
-26.2784, 28.6753

■ 158.3030,
-26.2784, 28.6753

■ 150.8540,
-31.9730, 35.2080

■ 165.7520,
-20.5837, 22.1425

■ 143.9920,
-37.9571, 41.2260

■ 172.6140,
-14.5997, 16.1245

■ 136.5430,
-43.6517, 47.7588

■ 180.0630, -8.9051,
9.5917

■ 129.0940,
-49.3463, 54.2916

■ 187.5120, -3.2104,
3.0590

■ 122.2320,
-55.3304, 60.3095

■ 194.4880, 3.2104,
-3.0590

■ 118.1570,
-58.2514, 63.8833

■ 201.9370, 8.9051,
-9.5917

■ 209.3860, 14.5997,
-16.1245

■ 215.9060, 19.2733,
-21.8426

■ 221.1890, 16.6688,
-26.4758

Harmonies

Analogous

The Analogous color harmony consists of three colors that are next to each other on the color wheel.



160.2260, -19.3384, 42.7748



158.3030, -26.2784, 28.6753



155.3990, -25.3397, 7.5431

Triad

The Triadic color harmony groups three colors that are evenly spaced from another and form a triangle on the color wheel.



158.3030, -26.2784, 28.6753



142.3770, 14.6041, -64.3516



162.4960, 17.9965, 14.4740

Complementary

The Complementary color scheme is a pair of colors which are on the opposite of each other on the color wheel.



158.3030, -26.2784, 28.6753



137.6970, 26.2784, -28.6753

Split Complementary

Split-complementary colors differ from the complementary color scheme. The scheme consists of three colors, the original color and two neighbors of the complement color.



158.6000, 26.8192, -15.4352



158.3030, -26.2784, 28.6753



142.5580, 26.8399, -68.8954

Square

The Square scheme is like the rectangle color scheme, but the four colors are evenly spaced on the color wheel.



158.3030, -26.2784, 28.6753



147.4540, -2.1958, -42.4942



150.9120, 30.1164, -46.4038



162.8380, 5.9959, 36.9761

Rectangle

The Rectangle color scheme consists of four colors that form a rectangle on the color wheel.



158.3030, -26.2784, 28.6753



153.8530, -20.6335, -8.6411



150.9120, 30.1164, -46.4038



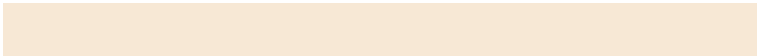
161.6520, 21.3706, 5.5672

Sweetspot

The Sweet Spot groups the original color and five complimentary colors.



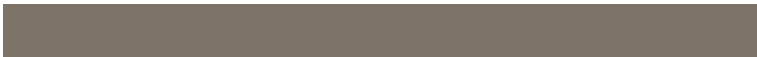
158.3030, -26.2784, 28.6753



234.3190, -10.5103, 11.1212



135.2740, 4.7949, 48.8717



116.7360, -6.2788, 7.2475



252.0000, 0.0000, 0.0000



125.0000, 0.0000, 0.0000

Same Dimension

The Same Dimension uses a secret algorithm to generate beautiful new colors.



158.3030, -26.2784, 28.6753



196.6180, -40.7307, 44.1850



180.2990, -37.1224, 6.7538



90.6260, -2.7736, 2.9590



97.7240, -48.1779, 52.8621



19.2480, -9.4893, 10.3065

Inverse Universe

The Inverse Universe completely reimagines the original color for something new.



137.6970, 26.2784, -28.6753



164.3820, 40.7307, -44.1850



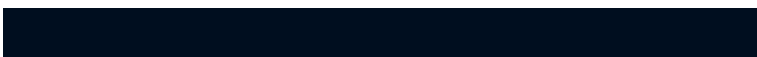
115.7010, 37.1224, -6.7538



88.3740, 2.7736, -2.9590



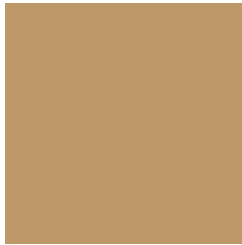
60.2760, 48.1779, -52.8621



11.7520, 9.4893, -10.3065

Previews

White Background



This preview shows how the YUV color 158.3030, -26.2784, 28.6753 looks on a white background.

Color Contrast Check

Large Text (above 18pt) WCAG AA × Fail

Any Text WCAG AA × Fail

Large Text (above 18pt) WCAG AAA × Fail

Any Text WCAG AAA × Fail

Black Background



This preview shows how the YUV color 158.3030, -26.2784, 28.6753 looks on a black background.

Color Contrast Check

Large Text (above 18pt) WCAG AA ✓ Pass

Any Text WCAG AA ✓ Pass

Large Text (above 18pt) WCAG AAA ✓ Pass

Any Text WCAG AAA ✓ Pass

If you want to check with other color combinations, try the [Color Contrast Checker](#).

YUV 158.3030, -26.2784, 28.6753

Background



This preview shows how black text looks on a background with the YUV color 158.3030, -26.2784, 28.6753.



This preview shows how white text looks on a background with the YUV color 158.3030, -26.2784, 28.6753.

Color Blindness Simulation

Color vision deficiency is a very complex topic, and I could not describe the different causes any better than Wikipedia does, so if you want to learn more, you should check out their [article about color blindness](#).

Dichromacy



Original Color

158.3030, -26.2784, 28.6753

Protanopia

157.0730, -24.1930, 13.0910

Deuteranopia

158.3030, -26.2784, 28.6753



Tritanopia

161.6170, -2.2762, 30.1539

Trichromacy



Original Color

158.3030, -26.2784, 28.6753

Protanomaly

157.2910, -24.7935, 19.0388

Deuteranomaly

158.3030, -26.2784, 28.6753

Tritanomaly

160.6140, -11.1487, 29.2795

Monochromacy



Original Color

158.3030, -26.2784, 28.6753

Achromatopsia

158.0000, 0.0000, 0.0000

Achromatomaly

158.2480, -9.4893, 10.3065

CSS Examples

Text

The CSS property to change the color of the text to YUV 158.3030, -26.2784, 28.6753 is called "color". The color property can be set on classes, ids or directly on the HTML element.

This example shows how text in the color `rgb(191, 152, 105)` looks like.

```
.text, #text, p{  
    color:rgb(191, 152, 105)  
}
```

If you want to add a text shadow in that color use the text-shadow property, you can generate a text shadow directly with our [CSS Text Shadow Generator](#).

Here you see how black text with a 4 pixel rgb(191, 152, 105) colored shadow looks like.

```
.shadow{ text-shadow: 4px 4px 2px rgb(191, 152, 105) }
```

Border

The CSS property to change the border of an element to YUV 158.3030, -26.2784, 28.6753 is called "border".

The border property can be set on classes, ids or directly on the HTML element.

This example shows the color as border, it can be applied via the CSS property "border" or "border-color".

```
.border, #border, table{ border:4px solid rgb(191, 152, 105) }
```


If only the border color should be changed use the property `border-color`.

```
.border{ border-color:rgb(191, 152, 105) }
```

If you want to add a box shadow in that color use:

Here you see how a box with a 4 pixel `rgb(191, 152, 105)` colored shadow looks like.

```
.boxshadow{ -moz-box-shadow:4px 4px 4px  
4px rgb(191, 152, 105); -webkit-box-  
shadow:4px 4px 4px 4px rgb(191, 152, 105);  
box-shadow:4px 4px 4px 4px rgb(191, 152,  
105) }
```

Background

The CSS property to change the background color of an element to YUV 158.3030, -26.2784, 28.6753 is called "background". The background property can be set on classes, ids or directly on the HTML element.

```
.background, #background, body{  
background: rgb(191, 152, 105) }
```

If only the background color should be changed can be used:

```
.background{ background-color: rgb(191,  
152, 105) }
```

This example shows the color as background, it is applied via the CSS property "background".

To optimize and compress your CSS code, you can use our [online CSS compressor and optimizer](#) based on csstidy. If you want to create a linear or radial gradient as background or border, check our [CSS Gradient Generator](#).

Hey! You found this booklet interesting? Support Converting Colors with the new Membership Option!

The pro membership hides all ads, plus gives you double the colors in the color bucket, and more awesome pro features!

[Learn more, Memberships starting at \\$2.50/m!](#)

**Follow me
on Twitter!**

@ConvertingColor