

Converting Colors

YUV(158.4750, -3.6852,
15.3694)

Have a look what the booklet for
YUV(158.4750, -3.6852, 15.3694)
contains.

YUV(158.4750, -3.6852, 15.3694)	3
<i>Conversions</i>	4
<i>Details</i>	6
<i>Harmonies</i>	12
<i>Previews</i>	24
<i>Color Blindness Simulation</i>	28
<i>CSS Examples</i>	31

Color

**YUV(158.4750, -3.6852,
15.3694)**

Conversions

Conversions Part 1

Format	Color
Hex	B09797
RGB	176, 151, 151
RGB Percent	69%, 59%, 59%
CMY	0.3098, 0.4078, 0.4078
CMYK	0.00, 0.14, 0.14, 0.31
HSL	0°, 14%, 64%
HSV	0°, 14%, 69%
XYZ	34.5570, 33.5977, 33.9418
YIQ	158.4750, 14.9000, 5.3000

Conversions

Conversions Part 2

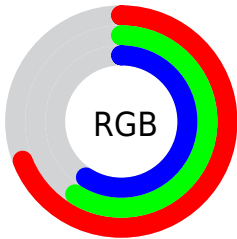
Format	Color
RYB	176, 151, 151
Decimal	11573143
CIELab	64.64, 9.27, 3.43
CIELCh	65, 9.883, 20.301
Yxy	33.5977, 0.3385, 0.3291
Android (android.graphics.Color)	4289763223 (0xFFB09797)
YUV	158.4750, -3.6852, 15.3694
Hunter-Lab	57.9635, 4.9830, 5.8559

Details

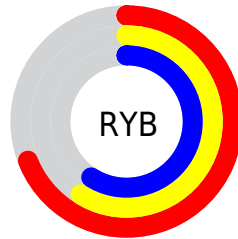
The YUV color **158.4750, -3.6852, 15.3694** is a light color, and the websafe version is hex **999999**. A complement of this color would be **168.5250, 3.6852, -15.3694**, and the grayscale version is **159.0000, 0.0000, 0.0000**.

A 20% lighter version of the original color is **213.0730, -3.9800, 16.5990**, and **106.8770, -3.3904, 14.1399** is the 20% darker color. If you saturate the color by 10%, you get **145.8570, -6.3385, 26.4354**, and if you desaturate by 10%, it is **171.0930, -1.0318, 4.3034**.

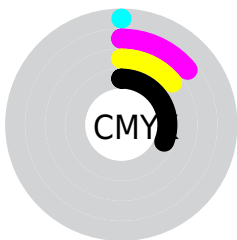
Distribution



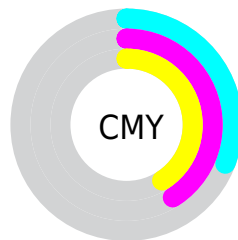
- Red (69%)
- Green (59%)
- Blue (59%)



- Red (69%)
- Yellow (59%)
- Blue (59%)



- Cyan (0%)
- Magenta (14%)
- Yellow (14%)
- Black (31%)



- Cyan (31%)
- Magenta (41%)
- Yellow (41%)

Brightness & Saturation Gradients

These gradients show how the YUV color 158.4750, -3.6852, 15.3694 changes by changing the brightness by 10 percent. The first figure shows a shift by +10% for each color and the second figure -10%.

Similar to the brightness gradients but the following saturation gradients show a change of the YUV color 158.4750, -3.6852, 15.3694 by changing the saturation by 10% instead.

■ 158.4750, -3.6852,
15.3694

■ 158.4750, -3.6852,
15.3694

255.0000, 0.0000,
0.0000

■ 132.1760, -3.5378,
14.7546

■ 213.0730, -3.9800,
16.5990

■ 106.8770, -3.3904,
14.1399

■ 239.5780, -3.2430,
13.5251

■ 82.5780, -3.2430,
13.5251

■ 59.3930, -2.6587,
12.8103

■ 37.6810, -2.8007,
11.6808

■ 15.5780, -3.2430,
13.5251

■ 0.0000, 0.0000,

0.0000

■ 158.4750, -3.6852,
15.3694

■ 158.4750, -3.6852,
15.3694

■ 145.8570, -6.3385,
26.4354

■ 171.0930, -1.0318,
4.3034

■ 133.9400, -8.8444,
36.8866

■ 183.0100, 1.4741,
-6.1478

■ 121.3220,
-11.4977, 47.9526

■ 195.6280, 4.1274,
-17.2138

■ 109.4050,
-14.0037, 58.4038

■ 207.5450, 6.6333,
-27.6650

■ 96.7870, -16.6570,
69.4698

■ 220.1630, 9.2866,
-38.7310

■ 84.1690, -19.3103,
80.5358

■ 231.3790, 11.6452,
-48.5674

■ 72.2520, -21.8162,
90.9870

■ 59.6340, -24.4696,
102.0530

■ 52.6240, -25.9436,
108.2008

Harmonies

Analogous

The Analogous color harmony consists of three colors that are next to each other on the color wheel.



158.6040, 0.6882, 12.6253



158.4750, -3.6852, 15.3694



158.2530, -7.0267, 13.8101

Triad

The Triadic color harmony groups three colors that are evenly spaced from another and form a triangle on the color wheel.



158.4750, -3.6852, 15.3694



154.4030, -4.6357, -6.4924



155.6380, 9.0525, -10.2065

Complementary

The Complementary color scheme is a pair of colors which are on the opposite of each other on the color wheel.



158.4750, -3.6852, 15.3694



168.5250, 3.6852, -15.3694

Split Complementary

Split-complementary colors differ from the complementary color scheme. The scheme consists of three colors, the original color and two neighbors of the complement color.



154.8500, 7.4690, -15.6544



158.4750, -3.6852, 15.3694



154.0970, -0.5408, -13.2401

Square

The Square scheme is like the rectangle color scheme, but the four colors are evenly spaced on the color wheel.



158.4750, -3.6852, 15.3694



155.9480, -7.8624, 1.7996



154.0410, 4.4168, -16.6990



157.0520, 7.8624, -1.7996

Rectangle

The Rectangle color scheme consists of four colors that form a rectangle on the color wheel.



158.4750, -3.6852, 15.3694



157.1880, -8.4737, 11.2361



154.0410, 4.4168, -16.6990



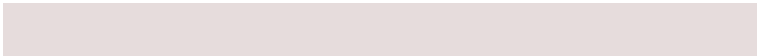
155.2140, 8.7685, -12.4657

Sweetspot

The Sweet Spot groups the original color and five complimentary colors.



158.4750, -3.6852, 15.3694



222.9900, -1.4741, 6.1478



161.3250, 7.2348, 12.8700



110.7940, -0.8844, 3.6887



242.0000, 0.0000, 0.0000



115.0000, 0.0000, 0.0000

Same Dimension

The Same Dimension uses a secret algorithm to generate beautiful new colors.



158.4750, -3.6852, 15.3694



201.9600, -5.8963, 24.5911



165.5190, -7.1579, 9.1918



82.6910, -1.3267, 5.5330



45.7470, -22.5533, 94.0609



7.7740, -3.8326, 15.9842

Inverse Universe

The Inverse Universe completely reimagines the original color for something new.



168.5250, 3.6852, -15.3694



218.0400, 5.8963, -24.5911



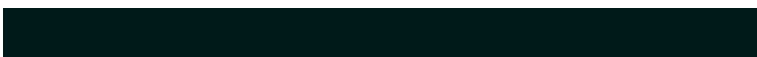
160.8940, 7.4473, -8.6770



86.3090, 1.3267, -5.5330



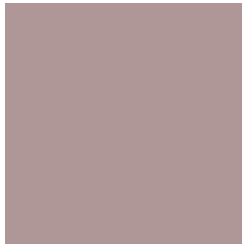
107.2530, 22.5533, -94.0609



18.2260, 3.8326, -15.9842

Previews

White Background



This preview shows how the YUV color 158.4750, -3.6852, 15.3694 looks on a white background.

Color Contrast Check

Large Text (above 18pt) WCAG AA × Fail

Any Text WCAG AA × Fail

Large Text (above 18pt) WCAG AAA × Fail

Any Text WCAG AAA × Fail

Black Background



This preview shows how the YUV color 158.4750, -3.6852, 15.3694 looks on a black background.

Color Contrast Check

Large Text (above 18pt) WCAG AA ✓ Pass

Any Text WCAG AA ✓ Pass

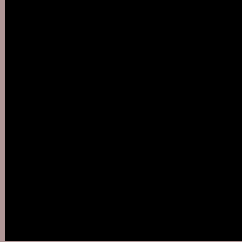
Large Text (above 18pt) WCAG AAA ✓ Pass

Any Text WCAG AAA ✓ Pass

If you want to check with other color combinations, try the [Color Contrast Checker](#).

YUV 158.4750, -3.6852, 15.3694

Background



This preview shows how black text looks on a background with the YUV color 158.4750, -3.6852, 15.3694.



This preview shows how white text looks on a background with the YUV color 158.4750, -3.6852,

15.3694.

Color Blindness Simulation

Color vision deficiency is a very complex topic, and I could not describe the different causes any better than Wikipedia does, so if you want to learn more, you should check out their [article about color blindness](#).

Dichromacy



Original Color

158.4750, -3.6852, 15.3694

Protanopia

156.9680, -1.4632, 2.6591

Deuteranopia

158.4640, -3.6798, 13.6251



Tritanopia

158.7400, 1.1142, 16.0140

Trichromacy



Original Color

158.4750, -3.6852, 15.3694

Protanomaly

157.4740, -2.2057, 7.4773

Deuteranomaly

158.7630, -3.8272, 14.2398

Tritanomaly

158.8710, -0.9224, 15.8991

Monochromacy



Original Color

158.4750, -3.6852, 15.3694

Achromatopsia

158.0000, 0.0000, 0.0000

Achromatomaly

157.9900, -1.4741, 6.1478

CSS Examples

Text

The CSS property to change the color of the text to YUV 158.4750, -3.6852, 15.3694 is called "color". The color property can be set on classes, ids or directly on the HTML element.

This example shows how text in the color `rgb(176, 151, 151)` looks like.

```
.text, #text, p{  
    color:rgb(176, 151, 151)  
}
```

If you want to add a text shadow in that color use the text-shadow property, you can generate a text shadow directly with our [CSS Text Shadow Generator](#).

Here you see how black text with a 4 pixel rgb(176, 151, 151) colored shadow looks like.

```
.shadow{ text-shadow: 4px 4px 2px rgb(176, 151, 151) }
```

Border

The CSS property to change the border of an element to YUV 158.4750, -3.6852, 15.3694 is called "border". The border property can be set on classes, ids or directly on the HTML element.

This example shows the color as border, it can be applied via the CSS property "border" or "border-color".

```
.border, #border, table{ border:4px solid rgb(176, 151, 151) }
```


If only the border color should be changed use the property `border-color`.

```
.border{ border-color:rgb(176, 151, 151) }
```

If you want to add a box shadow in that color use:

Here you see how a box with a 4 pixel `rgb(176, 151, 151)` colored shadow looks like.

```
.boxshadow{ -moz-box-shadow:4px 4px 4px  
4px rgb(176, 151, 151); -webkit-box-  
shadow:4px 4px 4px 4px rgb(176, 151, 151);  
box-shadow:4px 4px 4px 4px rgb(176, 151,  
151) }
```

Background

The CSS property to change the background color of an element to YUV 158.4750, -3.6852, 15.3694 is called "background". The background property can be set on classes, ids or directly on the HTML element.

```
.background, #background, body{  
background: rgb(176, 151, 151) }
```

If only the background color should be changed can be used:

```
.background{ background-color: rgb(176,  
151, 151) }
```

This example shows the color as background, it is applied via the CSS property "background".

To optimize and compress your CSS code, you can use our [online CSS compressor and optimizer](#) based on csstidy. If you want to create a linear or radial gradient as background or border, check our [CSS Gradient Generator](#).

Hey! You found this booklet interesting? Support Converting Colors with the new Membership Option!

The pro membership hides all ads, plus gives you double the colors in the color bucket, and more awesome pro features!

[Learn more, Memberships starting at \\$2.50/m!](#)

**Follow me
on Twitter!**

@ConvertingColor